

BLUE GOLD



LUDO CAMPBELL-REID

Manager Environmental Strategy & Policy

Auckland Council

*Manager Environmental Strategy & Policy
LUDO CAMPBELL-REID*

A vibrant, high-angle photograph of a small stream in a dense forest. The water flows over numerous large, dark rocks covered in bright green moss. The surrounding foliage is thick and green, with many ferns visible. The overall scene is peaceful and natural.

tranquility

serenity

peace

therapy

A young child with blonde hair, wearing a yellow t-shirt with a pink floral design and a light blue skirt, is sitting on a concrete ledge. The child is splashing water with their feet, and water is spraying upwards. The word "JOY" is overlaid in large, white, sans-serif capital letters in the center of the image. The background shows a wooden fence and a concrete ledge. The scene is brightly lit, suggesting a sunny day.

JOY



elation

A young child with short brown hair, wearing a red quilted jacket with tan elbow patches and grey pants, is leaning over a water fountain. The child is holding a small, handmade boat made of white sticks and a cork, with a yellow paper sail attached to a stick. The boat is in the water, and the child is looking down at it with concentration. The fountain has a grid pattern on the ground. The word "fascination" is written in white lowercase letters across the middle of the image.

fascination



play

A close-up photograph of water cascading over a large, rusted metal pipe. The water is clear and creates white foam as it falls. The pipe is dark brown with visible rust and some green moss or algae growing on its surface. The background is a blurred view of a body of water.

wairua spirit

Ko te wai te ora o ngä mea katoa
Water is the lifegiver of all things





**SAVE WATER
SAVE LIFE**













DOES THE SOLUTION LIE BENEATH US?

As lakes and rivers run dry and Earth's surface water disappears, the solution might lie beneath us, in the vast (and largely untapped) network of underground aquifers. The United Nations cites over 23,400,000 km³ of water in aquifers, 547 times more than all of Earth's rivers combined. 98% of Earth's accessible water is thought to reside in aquifers, much of it "fossil" water more than a million years old. Until recently deep aquifer pumping was out of the question (a cubic yard of water weighs one ton), but core-drilling technologies developed by the oil industry are changing the picture. Many of these aquifers span national borders, making access rights a huge matter of contention, and possibly a cause for future conflict.



GUARANI AQUIFER
Could provide 100 liters of water a day to 5.5 billion people for 200 years

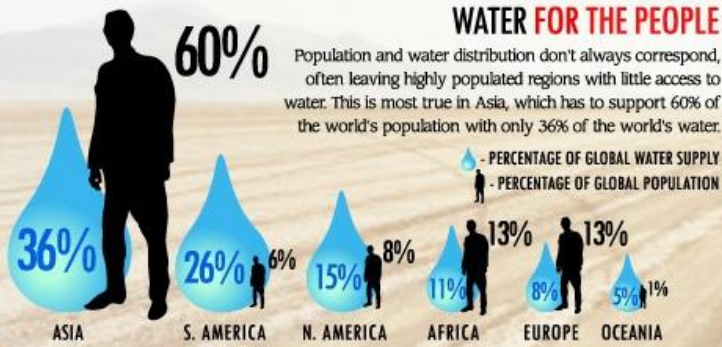
NUBIAN SANDSTONE AQUIFER
Volume is 500,000 times the annual flow of the Nile, but the desert climate above fails to replenish the aquifer below, making aquifer pumping an unsustainable solution.

Glass HALF EMPTY

THE COMING WATER WARS



EVERY MINUTE, 7 PEOPLE DIE FROM BAD WATER OR NO WATER



WILL THERE BE WAR?

Of all the water on Earth, only 2.5% is fresh, and less than 0.007% is readily available to people through rivers, lakes, and streams. As worldwide populations surge, temperatures rise, climates change, and diseases spread, clean water will become ever more essential (and ever more rare). In 2000, United Nations Secretary-General Kofi Annan warned that national rivalries over water could harbor "the seeds of violent conflict." Opinions are split on the likelihood of "Water Wars." In the past 50 years, there have been 1,831 water-related interactions between countries. Of these, the vast majority (1,228) ended peacefully. Only 21 involved actual military violence (18 between Israel and its neighbors). Furthermore, there are few places in the world where a water-poor country is in a military position to attack a water-rich neighbor. Still, many experts believe that as water shortages become increasingly urgent, countries (or at least local communities) will resort to violence to quench their thirsts.



- | | |
|-------------------|--------------------|
| BEST WATER | WORST WATER |
| 1) Finland | 1) Belgium |
| 2) Canada | 2) Morocco |
| 3) New Zealand | 3) India |
| 4) United Kingdom | 4) Jordan |
| 5) Japan | 5) Sudan |

1970 WARNING SIGNS

In 1970, water consumption worldwide was half what is today. With 80% of all sickness in the developing world linked to polluted water, and with populations sharply on the rise, the urgency of water management became apparent.



2003 DRY AND DIRTY

Over 1.3 billion people have no access to clean water. At least 2.2 million people die annually from diseases related to poor sanitation and contaminated drinking water - that's about 10,000 deaths from bad water (or no water) each day.



2025 PARCHED POPULACE

The United Nations estimates that the world's per capita water supply will drop by 1/3 in the next 20 years. The worst strain will be in Africa and the Middle East, where populations are growing fast and rivers are running dry.



MAP BY JONATHAN HARRIS OF FLAMING TOAST PRODUCTIONS



Deal with
the consequences.





ON 31 OCTOBER 2011, WORLD POPULATION WILL REACH 7 BILLION. JOIN A GLOBAL MOVEMENT FOR ALL HUMANITY.

7 BILLION ACTION www.7BillionActions.org  United Nations Population Fund

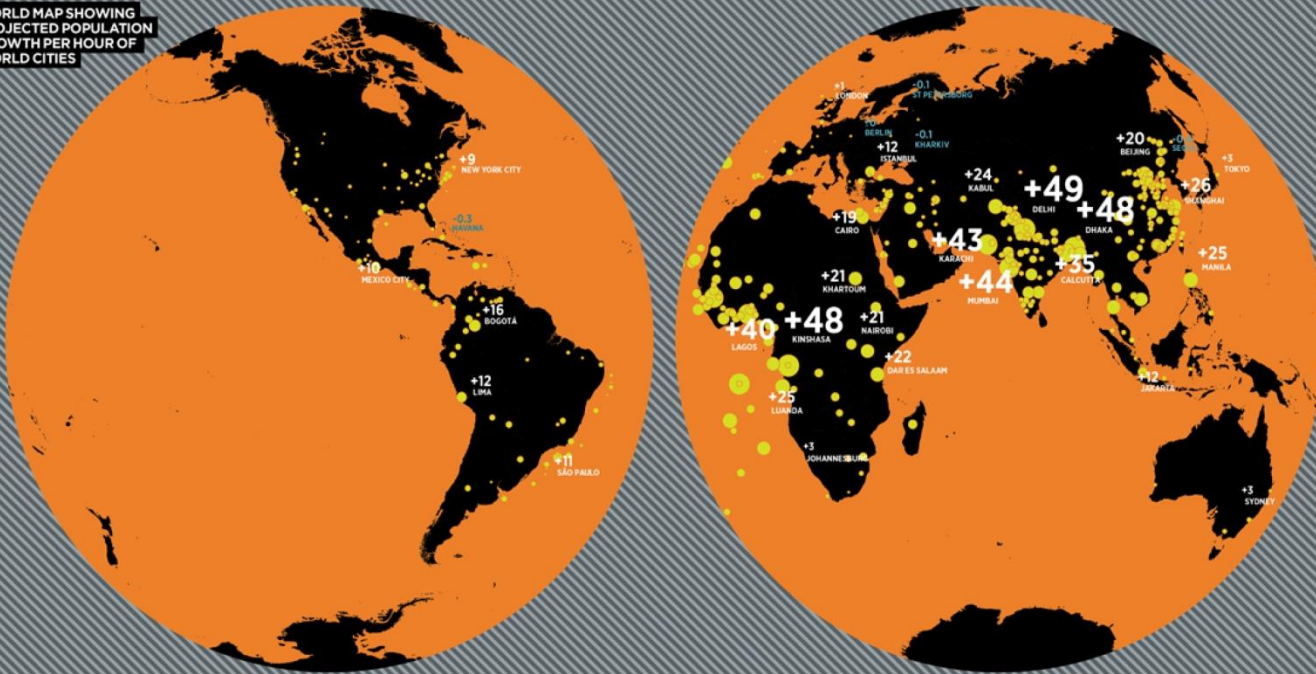


HOW RAPIDLY CITIES ARE GROWING

PEOPLE PER HOUR

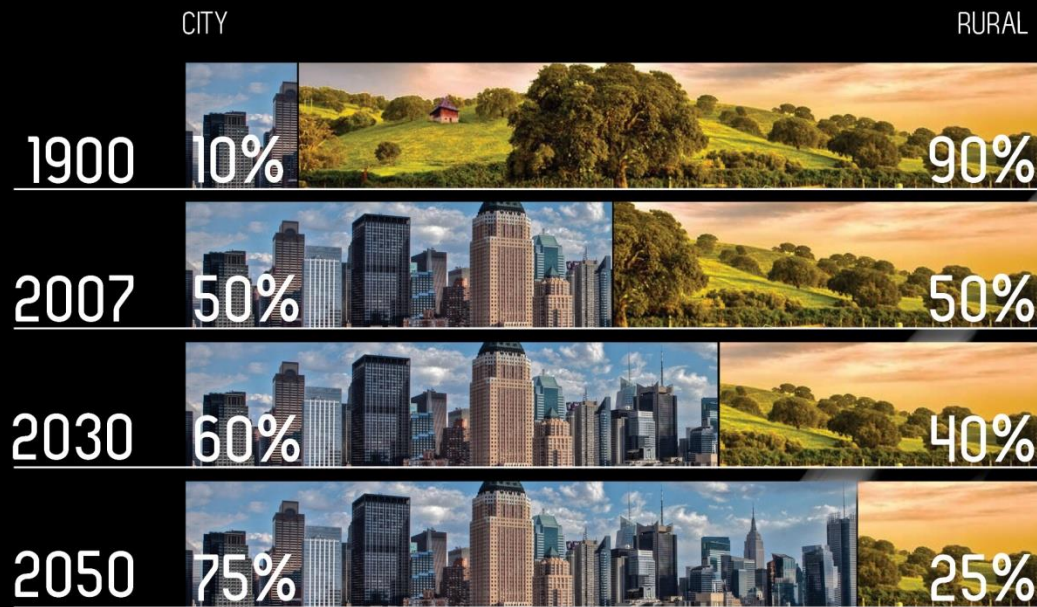


WORLD MAP SHOWING PROJECTED POPULATION GROWTH PER HOUR OF WORLD CITIES



HOW WE LIVE

MIGRATION TO THE CITIES

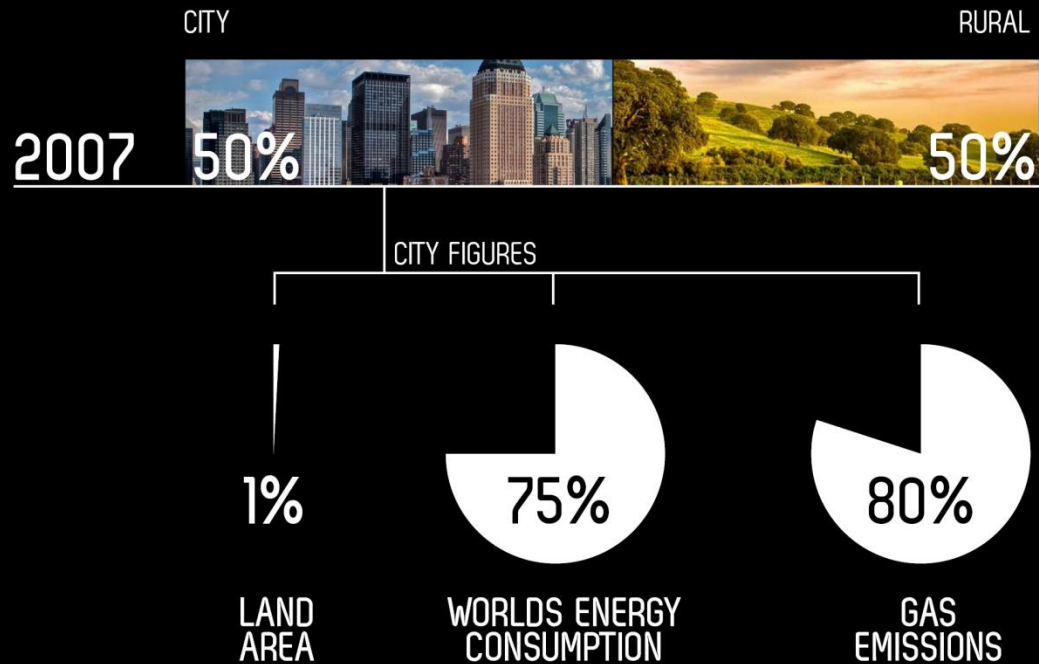


SINCE 2008 MORE PEOPLE ARE LIVING IN CITIES



HOW WE LIVE

MIGRATION TO THE CITIES



London “The London Plan”

“Develop London as an exemplary, sustainable world city, based on the three balanced and interwoven themes of strong, long-term and diverse economic growth, social inclusivity and fundamental improvements in the environment and use of resources”



New York City “PlaNYC”

“This Plan seeks to secure for our children a city that is even greater than the one we love today.”
“Together, we can create a greener, greater New York.”



milliontreesNYC

A PLANYC INITIATIVE WITH NYC PARKS AND NEW YORK RESTORATION PROJECT



I'M

ONE IN A MILLION.

TREE PLANTED BY:

TREE CARED FOR BY:





9th Avenue Before



9th Avenue After













An 8.4 kilometre long, modern public recreation space in downtown Seoul, South Korea - the massive urban renewal project is on the site of a stream that flowed before the rapid post-war economic development required it to be covered by transportation infrastructure - the \$900 million project initially attracted much public criticism but, after opening in 2005, has become popular among city residents and tourists. Driven by Former South Korea Mayor Lee Myung-Bak....
Now President










WATER CITY

AUCKLAND'S LOCATION GIVES
THE CITY CENTRE SOME
WONDERFUL OPPORTUNITIES,
MANY OF WHICH ARE RIPE
FOR REALISATION.

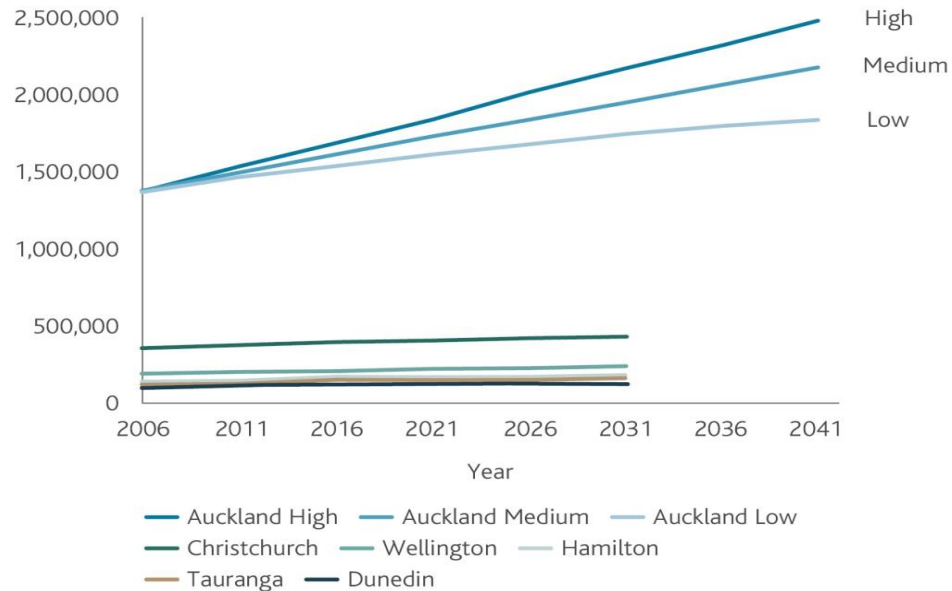




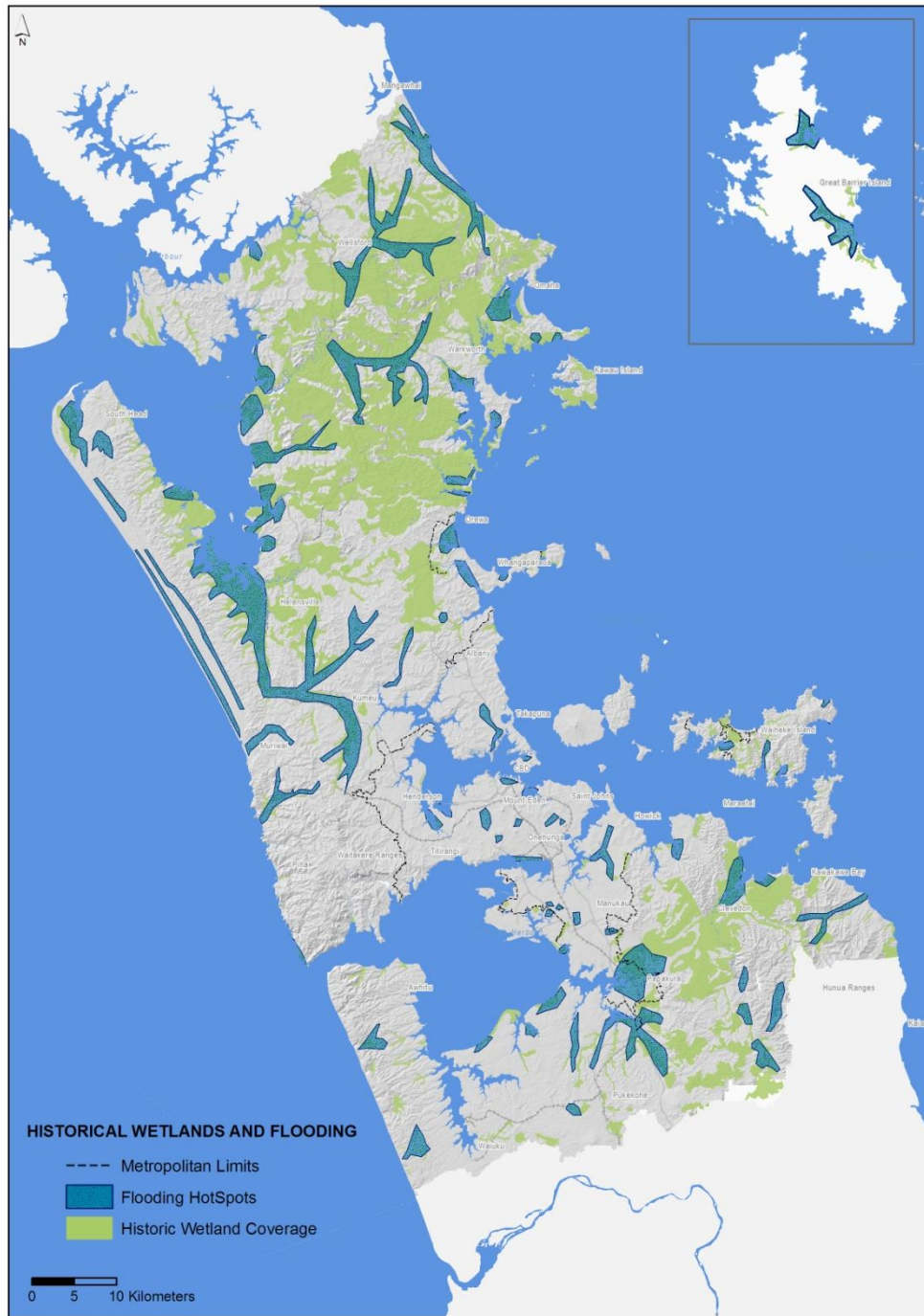
Auckland's freshwater resources include around 28,000 kilometres of streams, 72 lakes and ponds and extensive groundwaters


1.5
MILLION
PEOPLE LIVE
IN AUCKLAND

POPULATION PROJECTION AUCKLAND 2006-2041



Source: Statistics NZ and Auckland Council





Loss of 10km
permanent streams
pa— more intermittent
stream length in
addition to this un-
accounted for

Water quantity and quality is monitored at more than 100 river, 29 lake and 79 groundwater sites.

Most of these rivers, lakes and groundwater are degraded to some extent.



Paddlers complain of **infected wounds** after being cut on hidden debris in the murky, silty water.

Bouts of **conjunctivitis** are common after being splashed in the eyes. Some paddlers are **careful to wash exposed skin with clean water and disinfectant** immediately after sports training, to minimise the health risks caused by contact with the polluted water.



State of the Hauraki Gulf Report 2011

It is inevitable that further loss of the Gulf's natural assets will occur unless **bold, sustained and innovative steps** are taken to reduce the utilisation of its resources and **halt progressive environmental degradation.**

0800SAFESWIM

0800 723 379

Safeswim recommend: not to swim
48 hours after heavy rain; or in high
risk areas such as **stormwater
outfalls and stream mouths**



Auckland Regional Public Health Service, advises against eating shellfish gathered near urban areas because of the risk of contamination.

100% PURE

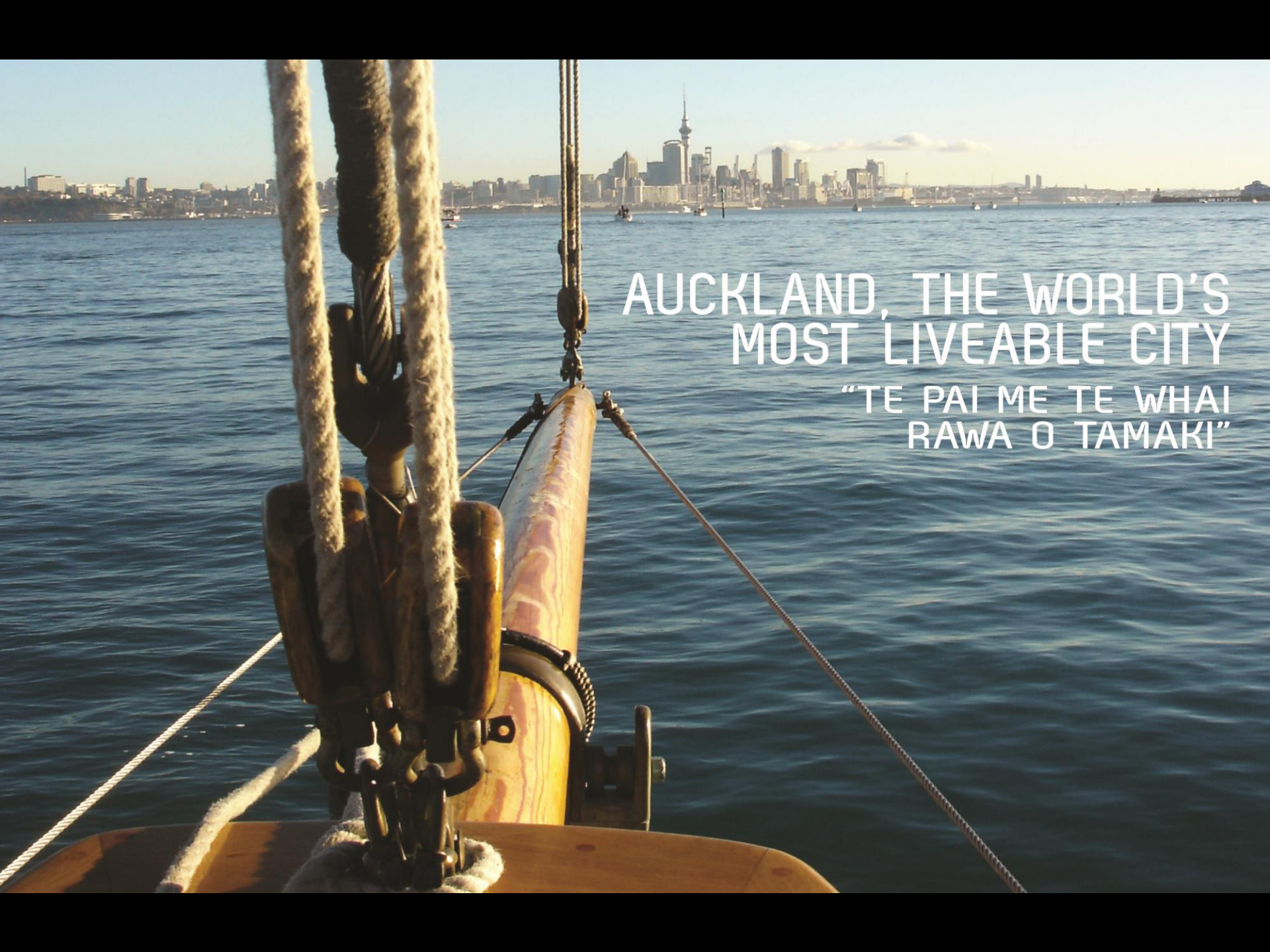
?



THE BEST WAY TO PREDICT THE
FUTURE IS TO CREATE IT

PETER F. DRUCKER



A photograph taken from the deck of a boat, looking out over the water towards the Auckland skyline. The foreground shows the wooden mast and rigging of the boat. The water is a deep blue with gentle ripples. In the distance, the city skyline is visible under a clear sky, with the Sky Tower being the most prominent feature. The text is overlaid on the right side of the image.

AUCKLAND, THE WORLD'S
MOST LIVEABLE CITY
"TE PAI ME TE WHAI
RAWA O TAMAKI"

MAYOR'S VISION

Creating the world's most liveable city

AUCKLAND PLAN

30-year vision and strategy for Auckland

LOCAL BOARD PLAN
3-Year plans of 21 Local Boards

UNITARY PLAN

Policies and rules to implement the Auckland Plan

PLACE-BASED PLANS

Spatial Plans for geographic areas e.g. Local Board area plans, City Centre Masterplan, and Waterfront Plan

STRATEGIES

Examples: Economic Development Strategy, Waste Management & Minimisation Strategy

LONG-TERM PLAN

Council's 10-year plan and budget

LOCAL BOARD AGREEMENT

Annual budgets of 21 Local Boards

IMPLEMENTATION

MAYOR'S VISION

Creating the world's most liveable city

AUCKLAND PLAN

7 OUTCOMES

6 TRANSFORMATIONAL SHIFTS

7 PRINCIPLES

15 STRATEGIC DIRECTIONS

MAYOR'S VISION

Creating the world's most liveable city

AUCKLAND PLAN

7 OUTCOMES

- ① A FAIR SAFE AND HEALTHY AUCKLAND
- ② A GREEN AUCKLAND
- ③ AN AUCKLAND OF PROSPERITY
- ④ A WELL CONNECTED AND ACCESSIBLE AUCKLAND
- ⑤ A BEAUTIFUL AUCKLAND THAT IS LOVED BY ITS PEOPLE
- ⑥ A CULTURALLY RICH AND CREATIVE AUCKLAND
- ⑦ A MAORI IDENTITY THAT IS AUCKLAND'S POINT OF DIFFERENCE IN THE WORLD

6 TRANSFORMATIONAL SHIFTS

7 PRINCIPLES

15 STRATEGIC DIRECTIONS

MAYOR'S VISION

Creating the world's most liveable city

AUCKLAND PLAN

7 OUTCOMES

6 TRANSFORMATIONAL SHIFTS

- ① DRAMATICALLY ACCELERATE THE PROSPECTS OF AUCKLAND'S CHILDREN AND YOUNG PEOPLE
- ② STRONGLY COMMIT TO ENVIRONMENTAL ACTION AND GREEN GROWTH
- ③ MOVE TO OUTSTANDING PUBLIC TRANSPORT WITHIN ONE NETWORK
- ④ RADICALLY IMPROVE THE QUALITY OF URBAN LIVING
- ⑤ SUBSTANTIALLY RAISE LIVING STANDARDS FOR ALL AUCKLANDER'S AND FOCUS ON THOSE MOST IN NEED
- ⑥ SIGNIFICANTLY LIFT MAORI SOCIAL AND ECONOMIC WELL-BEING

7 PRINCIPLES

15 STRATEGIC DIRECTIONS

MAYOR'S VISION

Creating the world's most liveable city

AUCKLAND PLAN

7 OUTCOMES

6 TRANSFORMATIONAL SHIFTS

7 PRINCIPLES

①
WORK
TOGETHER

②
VALUE
TE AO
MAORI

③
BE
SUSTAINABLE

④
ACT
FAIRLY

⑤
MAKE THE BEST
USE OF EVERY
DOLLAR SPENT

⑥
BE
AFFORDABLE

⑦
CHECK PRO-
GRESS AND
ADAPT TO
IMPROVE

15 STRATEGIC DIRECTIONS

MAYOR'S VISION

Creating the world's most liveable city

AUCKLAND PLAN

7 OUTCOMES

6 TRANSFORMATIONAL SHIFTS

7 PRINCIPLES

15 STRATEGIC DIRECTIONS

- 1
CREATE A STRONG, INCLUSIVE AND EQUITABLE SOCIETY THAT ENSURES OPPORTUNITY FOR ALL AUCKLANDER'S
- 2
ENABLE MAORI ASPIRATIONS THROUGH RECOGNITION OF THE TE TIRITI O WAITANGI AND CUSTOMARY RIGHTS
- 3
INTEGRATE ARTS AND CULTURE INTO OUR EVERYDAY LIVES
- 4
PROTECT AND CONSERVE AUCKLANDS HISTORIC HERITAGE FOR THE BENEFIT AND ENJOYMENT OF PRESENT AND FUTURE GENERATIONS
- 5
PROMOTE INDIVIDUAL AND COMMUNITY WELLBEING THROUGH PARTICIPATION AND EXCELLENCE IN RECREATION AND SPORT
- 6
DEVELOP AN ECONOMY THAT DELIVERS OPPORTUNITY AND PROSPERITY FOR ALL AUCKLANDER'S AND NEW ZEALAND
- 7
ACKNOWLEDGE THAT NATURE AND PEOPLE ARE INSEPARABLE
- 8
CONTRIBUTE TO TACKLING CLIMATE CHANGE AND INCREASING ENERGY RESILIENCE
- 9
KEEP RURAL AUCKLAND PRODUCTIVE, PROTECTED AND ENVIRONMENTALLY SOUND
- 10
CREATE A STUNNING CITY CENTRE, WITH WELL-CONNECTED QUALITY TOWNS, VILLAGES AND NEIGHBOURHOODS
- 11
HOUSE ALL AUCKLANDER'S IN SECURE, HEALTHY HOMES THEY CAN AFFORD
- 12
PLAN, DELIVER AND MAINTAIN QUALITY INFRASTRUCTURE TO MAKE AUCKLAND LIVEABLE AND RESILIENT
- 13
CREATE BETTER CONNECTIONS AND ACCESSIBILITY WITHIN AUCKLAND, ACROSS NEW ZEALAND AND TO THE WORLD
- 14
AUCKLAND STAKEHOLDERS AND AUCKLANDER'S WORK TOGETHER TO DELIVER THE PLAN
- 15
REGULARLY REVIEW PROGRESS AGAINST TARGETS AND ADAPT ACTIONS TO DELIVER THE PLAN

Snapshot of tools

ESP – POLICY FRAMEWORK

- Environmental Strategic Action Plan
 - Water Strategic Action Plan
 - National Policy Statement Freshwater Management
 - Sediment Management Action Plan
 - Livestock Exclusion initiatives etc
 - Marine Spatial Plan (Hauraki Gulf; Kaipara Harbour; Manukau Harbour & the West Coast)

Snapshot of tools (cont'd)

CCMP - City Centre Capital Projects

REGULATORY /Non Reg PLANNING RESPONSE

- Unitary Plan – on-site/at source control of stormwater flows, improved treatment and removal of stormwater contaminants, flooding, streamside riparian margin management, built controls
- Green Star, Green roofs etc

ADM – Auckland Design Manual (includes LIUD guidelines)

Non ESP - OPERATIONAL RESPONSES

Stormwater & Watercare - Central Interceptor and other major Capital Programme etc..

THE STRATEGY: EIGHT TRANSFORMATIONAL MOVES



01

HARBOUR EDGE STITCH

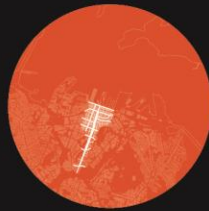
- uniting the
waterfront
with the city
centre



02

THE EAST- WEST STITCH

- connecting
the western
edge of the
city to the
centre



03

THE ENGINE ROOM

- Queen
Street valley,
the CBD and
retail district



04

INNOVATION CRADLE

- nurturing the
innovation and
learning cradle



05

CITY RAIL LINK

- new public
transport
stations and
development
opportunities
at Karangahape
Road, Newton



06

THE GREEN LINK

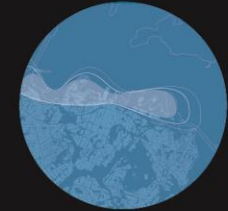
- connecting
Victoria Park,
Albert Park
and Auckland
Domain with
the waterfront
as part of a
blue-green
network



07

CITY TO THE VILLAGES

- connecting
the city and
the fringe



08

WATER CITY

- revitalising
the waterfront









Auckland Design Manual

Lorem ipsum dolor sit amet, consectetur adipiscing elit. Duis lacus lorem, varius ac mattis eu, tincidunt a turpis. Fusce id tellus at nisi varius venenatis. Nunc faucibus hendrerit elit ac scelerisque. Proin interdum lectus nec libero gravida non suscipit purus rutrum. Nunc eros est, viverra mollis auctor pulvinar, congue consectetur.



Design for Auckland

Lorem ipsum dolor sit amet, consectetur adipiscing elit. Morbi egestas feugiat porttitor. Aenean eu orci tortor, a gravida urna. Proin laoreet ultrices lobortis. Donec porttitor feugiat lorem, cursus ultrices massa ultrices ut. Sed lectus eros, varius vitae dapibus pellentesque, bibendum vel erat. Vivamus congue iaculis fermentum. Nullam orci nisi, dapibus.

Design for Places

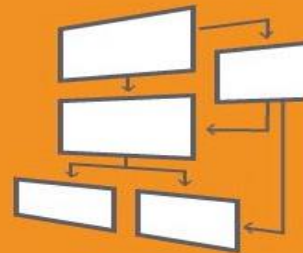
Good design enables the delivery of spaces, places and buildings that are sustainable and it helps to create environmental, social, cultural and economic value for Auckland and its communities. 'Design for Places' contains guidance, case studies and worked examples demonstrating how this can be achieved within the different scales of neighbourhood, street, park and site.

Design Process

Sed quis lorem pellentesque velit mattis pulvinar eu quis odio. Curabitur quis velit gravida justo ultricies imperdiet. Donec libero tortor, rhoncus id faucibus sit amet, imperdiet sed ipsum. Nulla odio diam, bibendum sed tristique quis, elementum sit amet lacus. Curabitur pretium euismod velit, quis tempor purus semper at. Duis viverra.

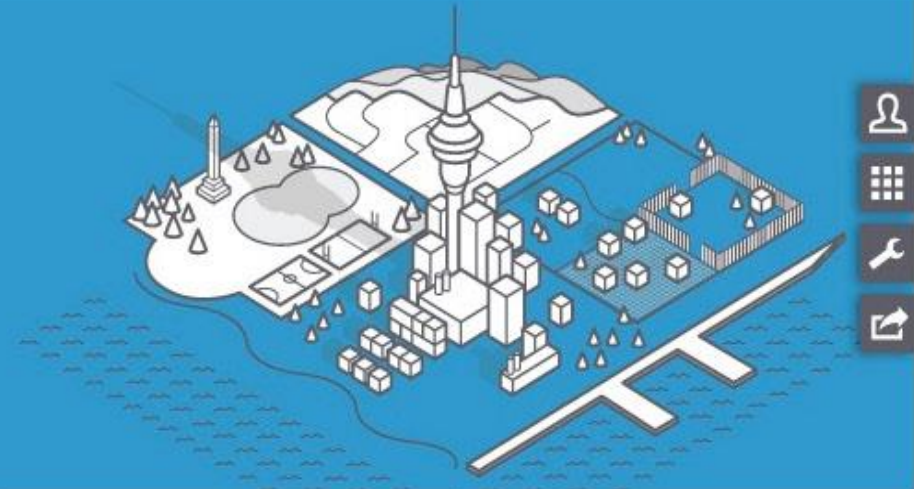
Design Thinking

Nulla risus eros, tempus viverra auctor ullamcorper, vestibulum eget quam. Nullam aliquam velit vitae neque imperdiet quis vehicula ligula egestas. Quisque massa turpis, condimentum sed vehicula sit amet, cursus at lorem. Pellentesque quis felis nec augue varius auctor. Duis a viverra urna. Nam quam lacus, laoreet nec venenatis quis, ornare.



Design for Places

Good design enables the delivery of spaces, places and buildings that are sustainable and it helps to create environmental, social, cultural and economic value for Auckland and its communities. 'Design for Places' contains guidance, case studies and worked examples demonstrating how this can be achieved within the different scales of neighbourhood, street, park and site.

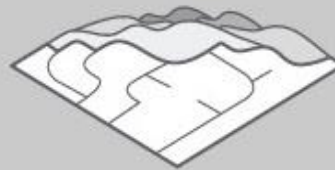


Sites



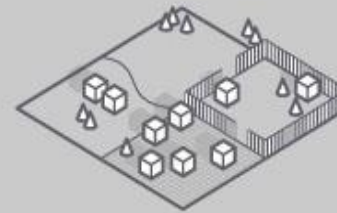
The type of development you choose can impact on how you lay out your site and how it affects its wider context. 'Sites' showcases how do this well, through best practice built examples from around Auckland and beyond, illustrations demonstrating how you could meet Auckland's planning controls and design guidance - highlighting helpful rules of thumb.

Streets



Lorem ipsum dolor sit amet, consectetur adipiscing elit. Praesent cursus tempus placerat. Sed fermentum eros quis sapien pharetra pulvinar. Suspendisse nec molestie odio. Lorem ipsum dolor sit amet, consectetur adipiscing elit. Ut dapibus purus a erat blandit viverra. Etiam luctus, nulla nec facilisis faucibus, odio nibh tempus mauris, id sodales.

Neighbourhoods

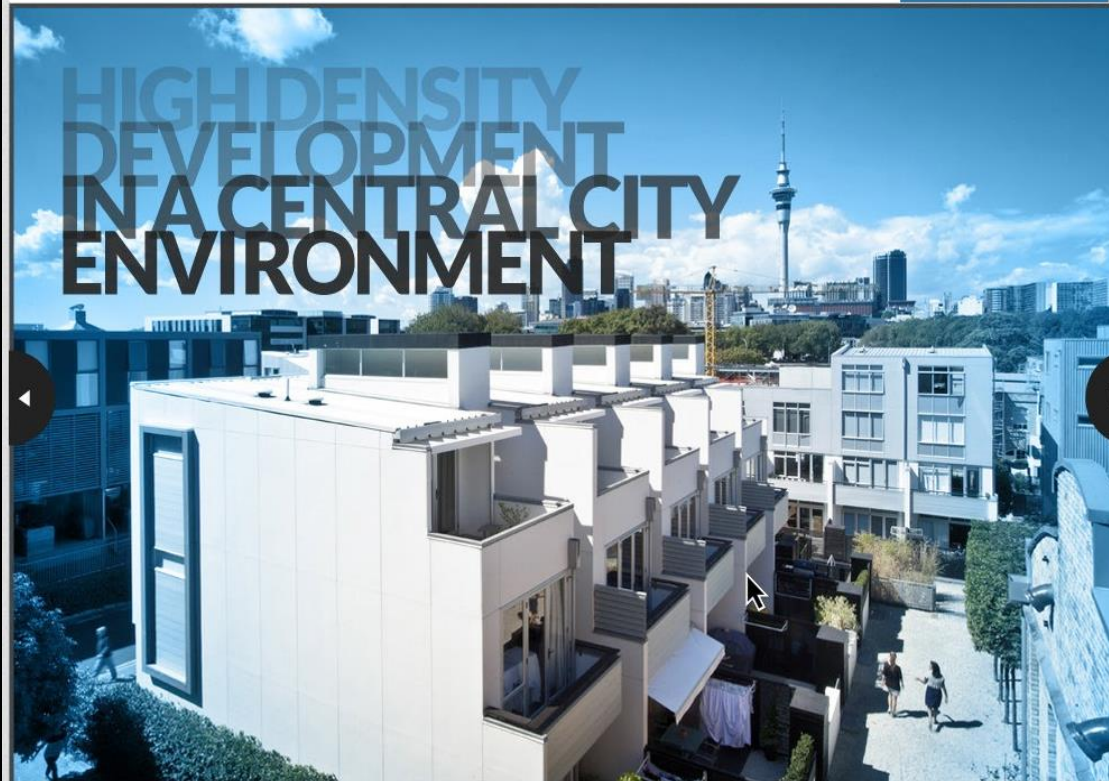


Sed sit amet nunc tortor, id tempor diam. Nullam eu porttitor sem. Cras nec libero in magna aliquet dictum. Mauris porttitor tellus non elit aliquam a iaculis odio rhoncus. Suspendisse blandit, dui eu ultrices dignissim, enim sapien tincidunt libero, in vehicula justo tellus quis lorem, Morbi viverra metus vel quam.

Parks



Cras bibendum arcu vel arcu euismod egestas. Cras consectetur condimentum blandit. Aenean dolor arcu, tristique eget hendrerit eu, pretium nec quam. Integer tempus justo magna, quis bibendum ante. Praesent pretium, dui nec feugiat gravida, diam mauris feugiat velit, eget vulputate justo magna eget odio. Curabitur viverra auctor varius. Donec sit.



ADDRESS

Fisher Point Drive, Brickfield Way, and Beaumont Quarter frontage, St Mary's Bay, Auckland

PARKING

Approximately 350 with 16 on street visitors car parks

COST

Information not released by developer

PROJECT TYPE

Master planned mixed use community on brownfield development site. Terraces (91%) and Apartments (9%)

238 units in total

Dwelling type(s) and size(s)

Townhouses ranged from 103m² @ 2x levels (type A) to 151m² @ 3 levels (type T)

Apartments ranged from 56m² @ 2x levels to 121m² @ 4 levels (including basement level parking)

SITE AREA

2.4 ha (Overall masterplan area: 2.4 ha including existing gasworks building which fronts onto Beaumont Street and future building site on the north-eastern corner)

RESIDENTIAL DENSITY

100 Dwellings per ha, (including parks, roads etc; net site density will be greater as will not include public roads)

274 beds per ha

CLIENT / DEVELOPER

Melview Developments Ltd.

ARCHITECT & DESIGN TEAM

Studio Pacific Architecture Ltd
Acknowledgments:

- S333 Architecture & Urbanism,
- Steven Tupu, NZ
- Thomas Balsley Associates,
- Boffa Miskell Ltd, NZ
- Jasmx Ltd, NZ
- Ian Moore Architects,



The development prioritises pedestrians by narrowing the streets and not allowing the car parking to dominate.

Guidance

- 1 Designing the Site
- 2 Street to the Front Door
- 5 Accommodating Cars

ADDRESS

Fisher Point Drive, Brickfield Way, and Beaumont Quarter frontage, St Mary's Bay, Auckland

PARKING

Approximately 350 with 16 on street visitors car parks

COST

Information not released by developer

PROJECT TYPE

Master planned mixed use community on brownfield development site. Terraces (91%) and Apartments (9%)

238 units in total

Dwelling type(s) and size(s)

Townhouses ranged from 103m² @ 2x levels (type A) to 151m² @ 3 levels (type T)

Apartments ranged from 56m² @ 2x levels to 121m² @ 4 levels (including basement level parking)

SITE AREA

2.4 ha (Overall masterplan area: 2.4 ha including existing gasworks building which fronts onto Beaumont Street and future building site on the north-eastern corner)

RESIDENTIAL DENSITY

100 Dwellings per ha, (including parks, roads etc; net site density will be greater as will not include public roads)

274 beds per ha

CLIENT / DEVELOPER

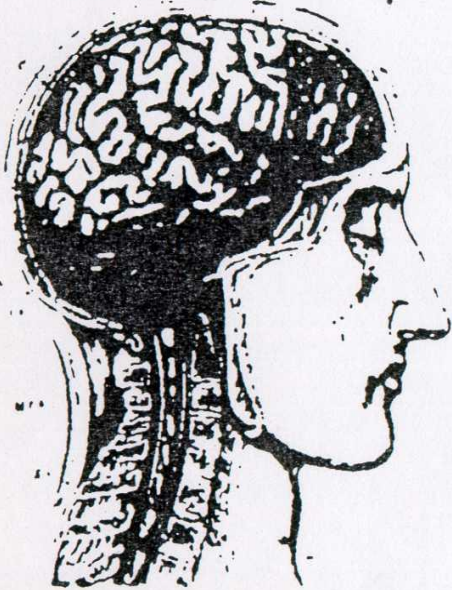
Melview Developments

ARCHITECT / DESIGN TEAM

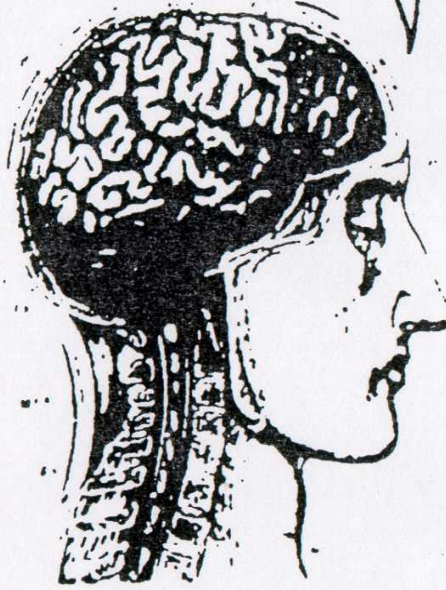
Studio Pacific Architects
Acknowledgments

- S333 Architecture
- Steven Tupu, NZ
- Thomas Balsley Associates
- Boffa Miskell Ltd
- Jasmex Ltd, NZ
- Ian Moore Architects

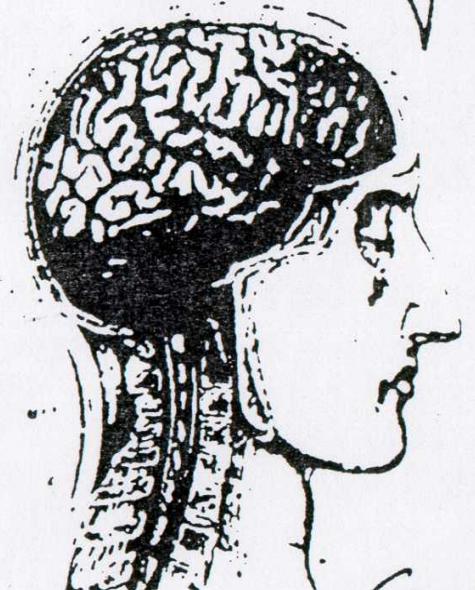
I'M AN ARCHITECT.
I'M GLAD I'M NOT
A PLANNER.



I'M A PLANNER.
I'M GLAD I'M NOT
A HIGHWAY
ENGINEER.



I'M A HIGHWAY
ENGINEER. I'M
GLAD MY MOTHER
LOVES ME.



Cowan

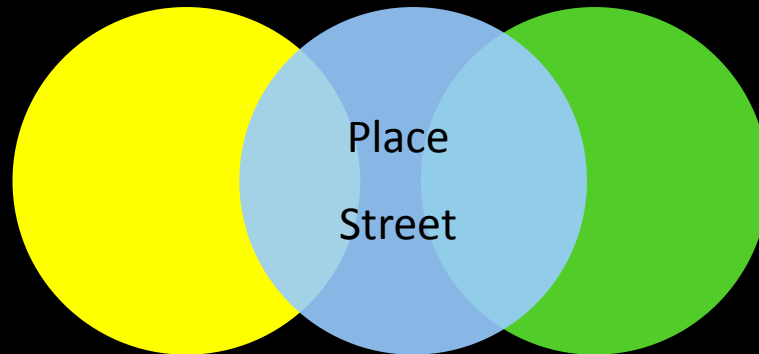




By giving space a single, rationalized function,
we made the city less efficient – less fun, less exciting, less rich



Allowing competing spaces/uses overlap (shared space) makes
for a more compact, efficient city, friendly, vibrant city





Could achieve this instead



Social housing development in
Seattle (photo 2006 | name
Highpoint



Shared Space – green natural version



Garden street from Todd –
property – Long Bay
(recently built)

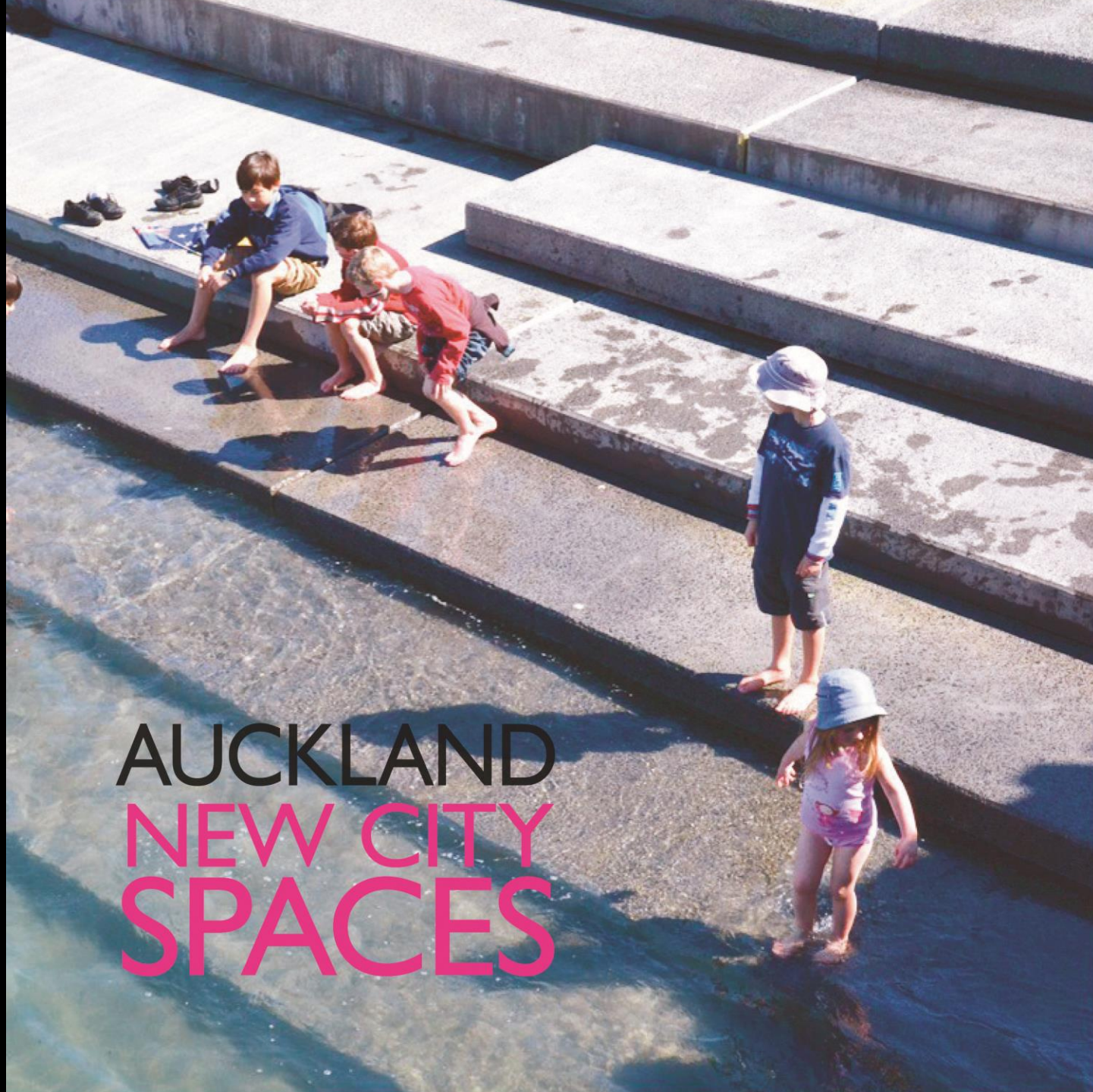


Existing
Jasmax









AUCKLAND
NEW CITY
SPACES

Conclusions

- Not waste product but Gold
- Need to integrate
- Green infrastructure solutions
- Stormwater projects are also multi disciplinary placemaking projects
 - Civil engineering only a component



Stockholm
Frankfurt
Dusseldorf
Munich
Bern
Geneva
Helsinki
Copenhagen
Vienna
Zurich

Tokyo

Vancouver
Calgary
Toronto

Perth
Adelaide
Melbourne
Sydney
Auckland

IN THE TOP 10'S

WORLD'S MOST LIVEABLE CITIES

MERCER/MONOCLE/ECONOMIST

T H E



F A C T O R

THE

W

FACTOR



THANK YOU

BLUE GOLD



LUDO CAMPBELL-REID

Manager Environmental Strategy & Policy

Auckland Council

Manager Environmental Strategy & Policy
LUDO CAMPBELL-REID