



# Valuing Water Community of Practice

## Making the Case for Water Literacy:

### Dunedin – Water supply planning perspective

Heinz Jacobs - 18 June 2024

3W Planning, Engineering Services Team Leader



# HISTORY

---

## dunedin's historical background

By 1874, Dunedin and its suburbs had become New Zealand's largest city with a population of 29,832 displacing Auckland's 27,840 residents to second place.<sup>[44]</sup>

Between 1881 and 1957, Dunedin was home to [cable trams](#), being both one of the first and last such systems in the world. Early in the 1880s the inauguration of the frozen meat





# OVERVIEW

- Overview of existing water supply
- Key points: WECAN Chairman's 5 Questions
- Future planning and water conservation
- Discussion.







# WATER SUPPLY

**10 Water sources (8 are used)**

**6 Water Treatment Plants**

**1,700 km of pipe**

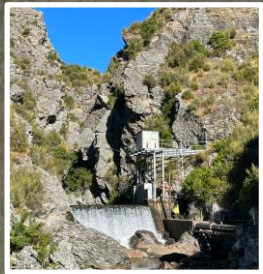
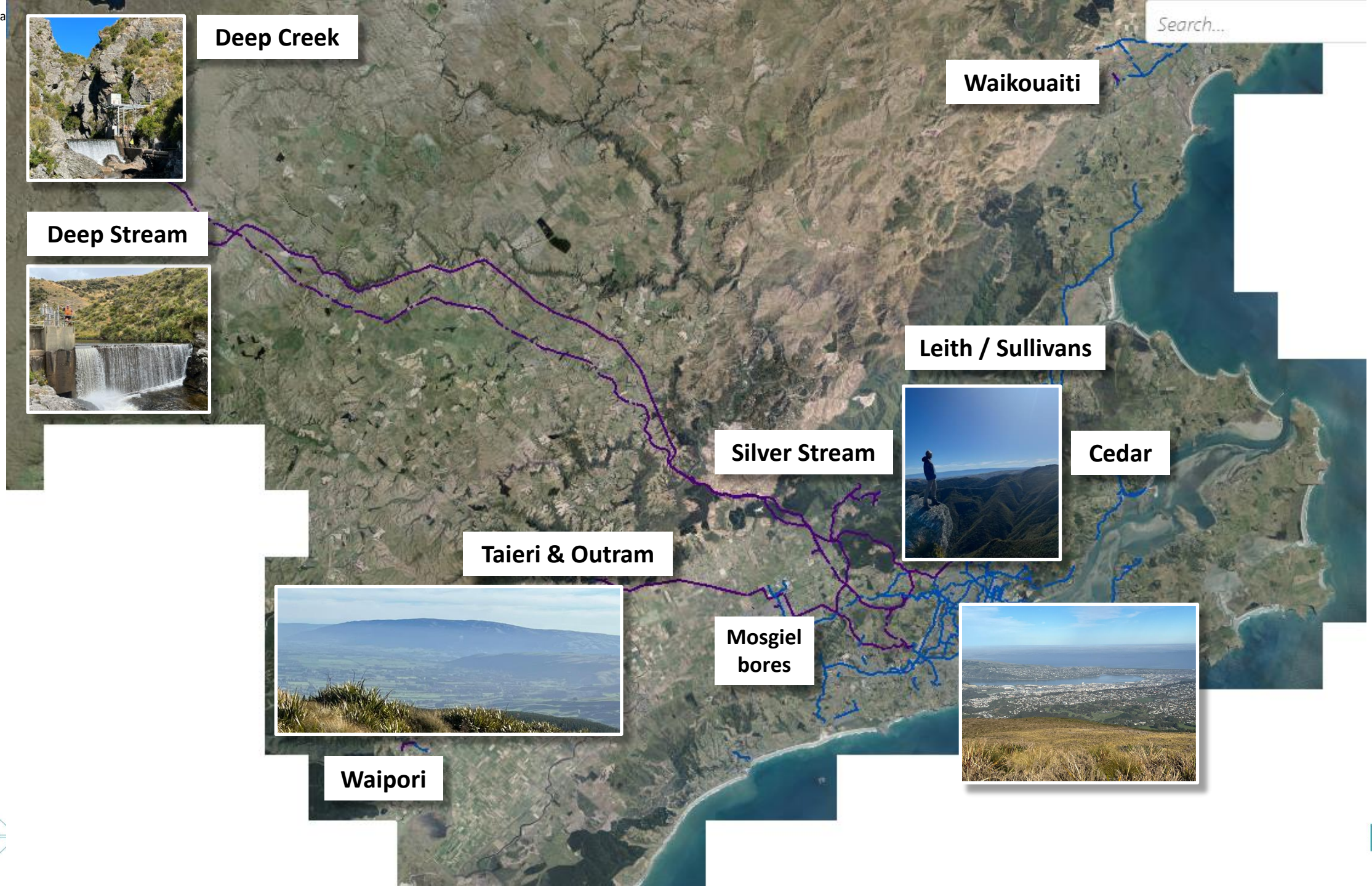
**~ 50,000 connections**

**~ 50,000 m<sup>3</sup>/day used**

**~ 130,000 people**







Deep Creek

Deep Stream



Waikouaiti

Leith / Sullivans

Silver Stream

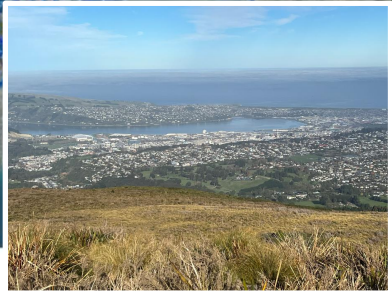
Cedar

Taieri & Outram

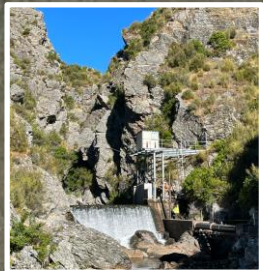
Mosgiel bores



Waipori



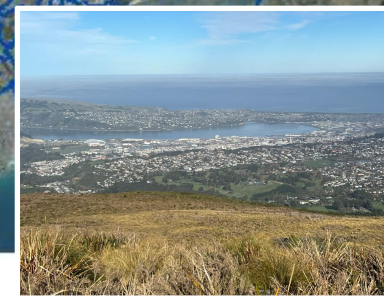
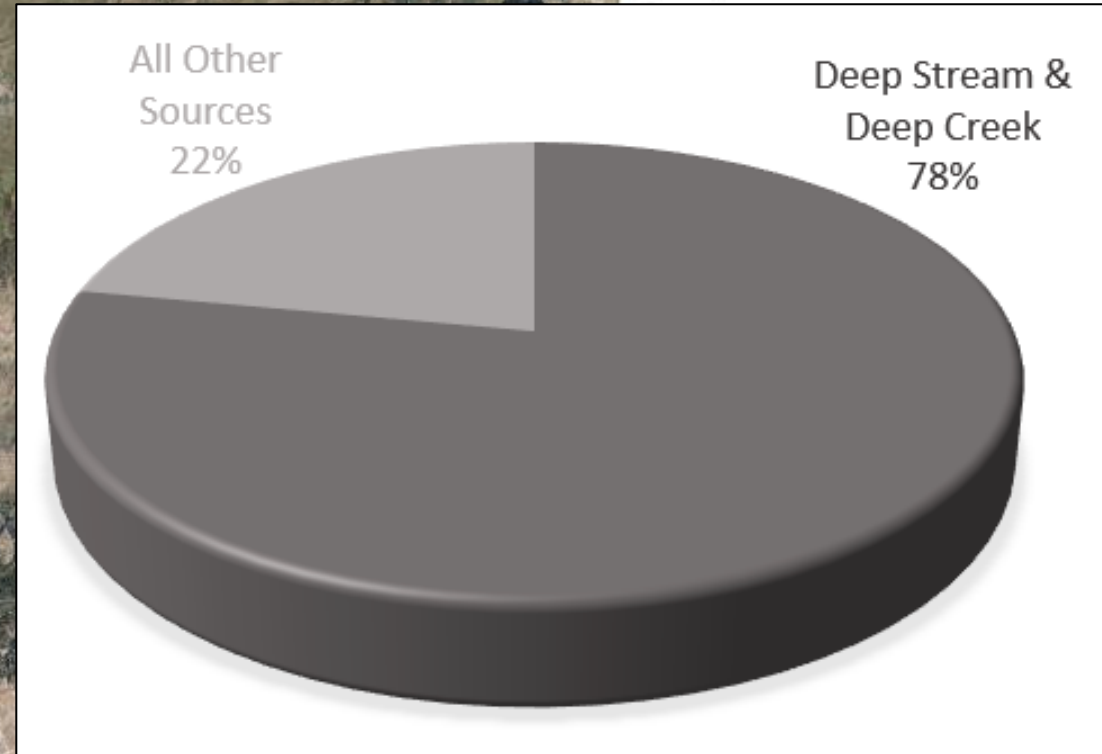




Deep Creek



Deep Stream





# KEY DISCUSSION POINTS

Question 1: Is water efficiency/conservation a feature of water supply planning? Is it limited to explaining water restrictions and what people can do to reduce consumption during restrictions, or part of a more fundamental push to lower demand overall?

DCC: Awareness is generally linked to restrictions and how to reduce consumption during restrictions. Focus is on “fixing leaks”. Customers often report visible leaks. As part of the integrated system plan WDM/WC will be part of a future work programme.

Question 2: Has Council undertaken any water literacy and/or water efficiency/conservation campaigns to support long-term water servicing planning to date? Why or why not?

DCC: Not to date. General awareness online. The key issue is resource constraints.



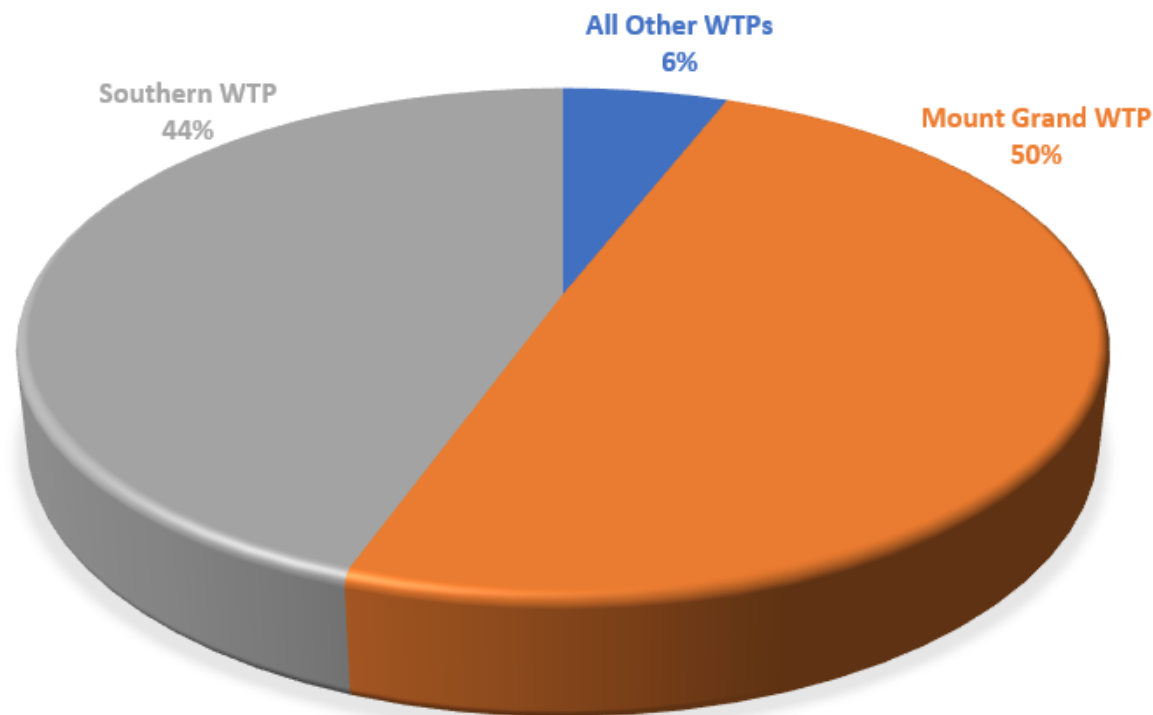


*If you can't measure  
something, you  
can't understand it.*

*If you can't  
understand it, you  
can't control it.*

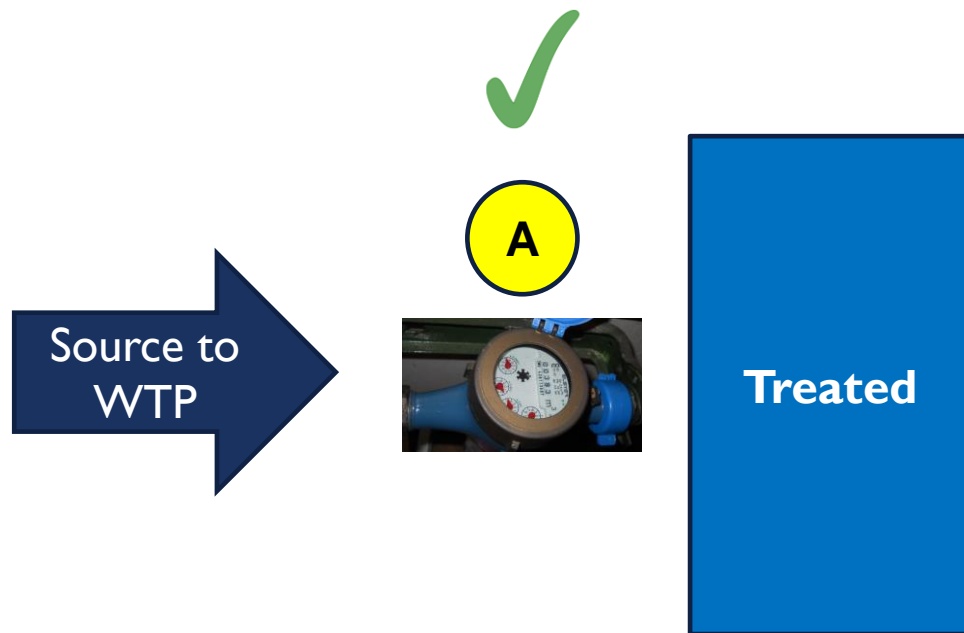
*If you can't control  
it, you can't  
improve it."*

WTP PRODUCTION CONTRIBUTION (2022)

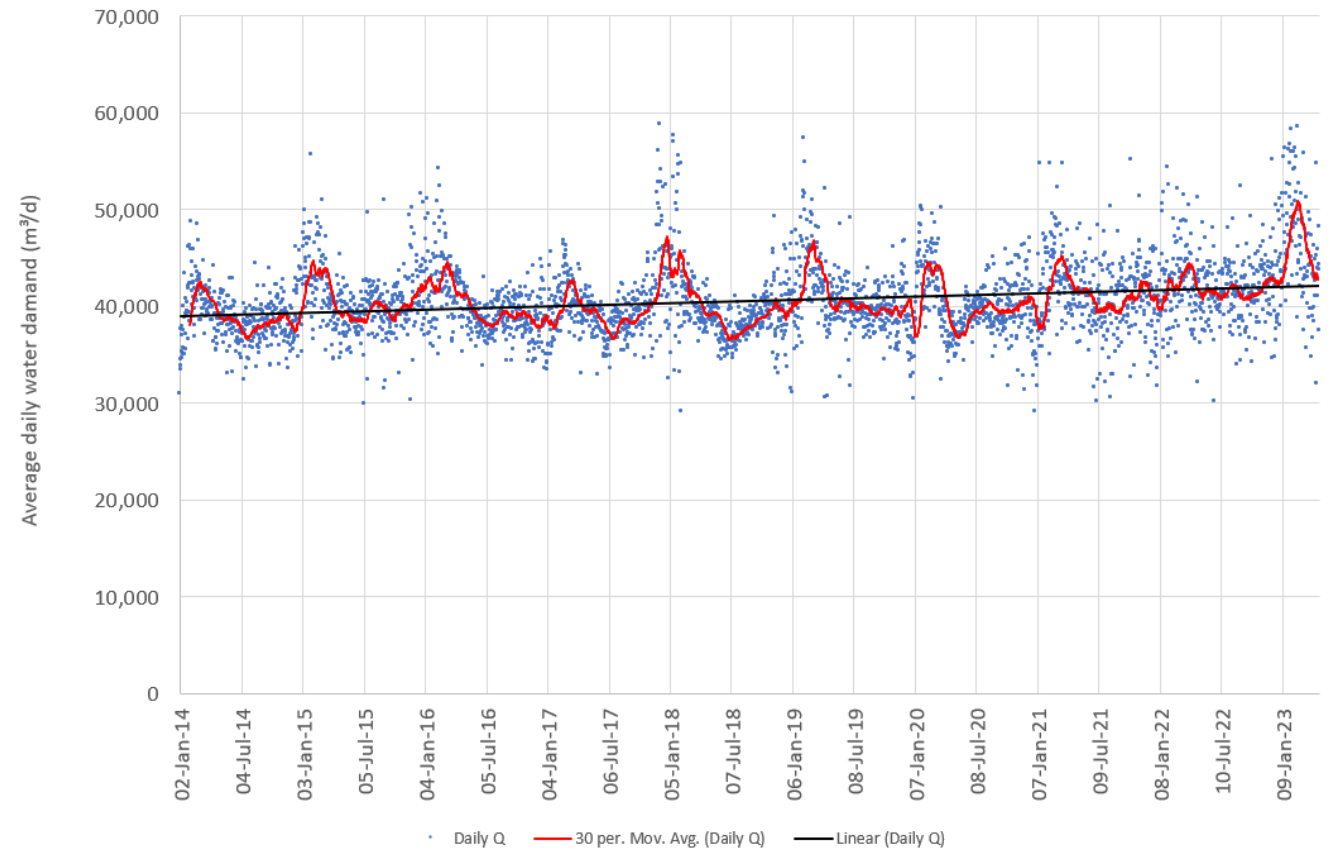




# DUNEDIN WATER BALANCE & METERING

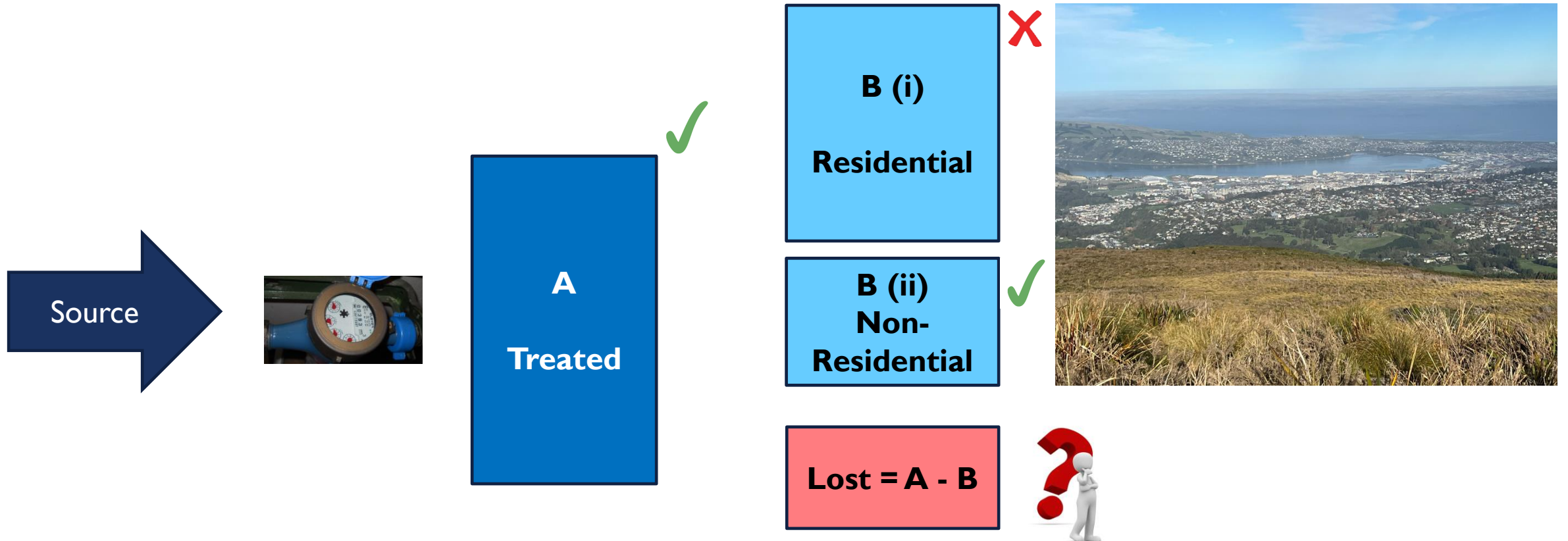


Mt Grand & Southern WTP & Mosgiel bores - Total flow rate (2014 - 2023)





# DUNEDIN WATER BALANCE & METERING





## KEY DISCUSSION POINTS



Question 3: What level of internal support is there for water literacy and water efficiency/conservation comms and engagement? Does your role (or anyone else's) involve devising and implementing this kind of comms and engagement?

DCC: DCC have a COMMS and Engagement team. 3W planning staff liaise with them often around water restrictions.

Question 4: Are there any particular barriers to undertaking such work?

DCC: Yes. Mainly resource constraints – staff and finances. “Water Literacy”! Lack of metering residential consumers limits demand management/conservation/efficiency efforts.

Question 5: What level of water literacy do customers have? Do you think there is sufficient awareness of why demand might need to be lower, or why DCC might need to invest in supply augmentation?

DCC: Unsure. How would you measure it? There is room for improvement inside and outside DCC.







# KEY DCC DOCUMENTS

- Water Bylaw. Improvement / update work to be undertaken in 2024/25.
- Water restrictions policy 2010. Due for review. Describes restrictions, trigger types but not levels, delegations.
- Drought Management Plan 2018 – 2028, being replaced by Water Shortage Response Plan.
- Water Conservation and Management Plan 2017 – 2027, currently being updated / replaced by Water Conservation and Demand Management Plan.





# QUESTIONS

# DISCUSSION