

---

# TE MANA O TE WAI INDUSTRY KŌRERO

Sarah Nolan, Mereana Taungapeau, James Armitage

---

# KARAKIA TĪMATANGA

Whakataka te hau ki te Uru  
Whakataka te hau ki te Tonga  
Kia mākinakina ki uta  
Kia mātaratara ki tai  
E hī ake ana te atākura  
He tio, he huka, he hauhū  
Tūturu whakamaua kia tina, tina!  
Haumi e, hui e, tai kī e!



# WHAT WE WILL BE COVERING



**01**

## SCENE SETTING

Te Mana o te Wai current state

---

**03**

## DISCUSSION

Mahi Tahi, Communication Barriers  
& Intergenerational Planning

**02**

## METHODOLOGY

How we ran the 2023 wānanga

---

**04**

## CONCLUSION

Where to next?

# 01 SCENE SETTING

---



# HOKINGA MĀHARA



## Karakia

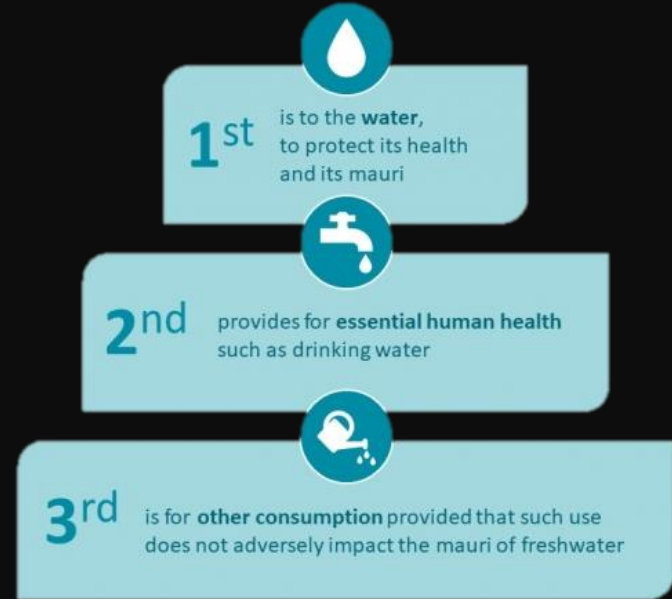
- Whakawātea
- Haerenga/Hekenga
- Te Katoa
- Kia tau

## Mātauranga

- Mā pango, mā whero ka oti te mahi
- He waka eke noa

# CURRENT STATE OF TE MANA O TE WAI

The current coalition government has signalled changes to freshwater policy and regulation. Although the full extent of change is unclear, Te Mana o te Wai and the hierarchy of obligations is under scrutiny. The government plans to remove requirements to consider the hierarchy of obligations in resourcing consenting and repeal and replace the National Policy Statement for Freshwater Management 2020 within the next couple of years.



# 02 METHODOLOGY

---

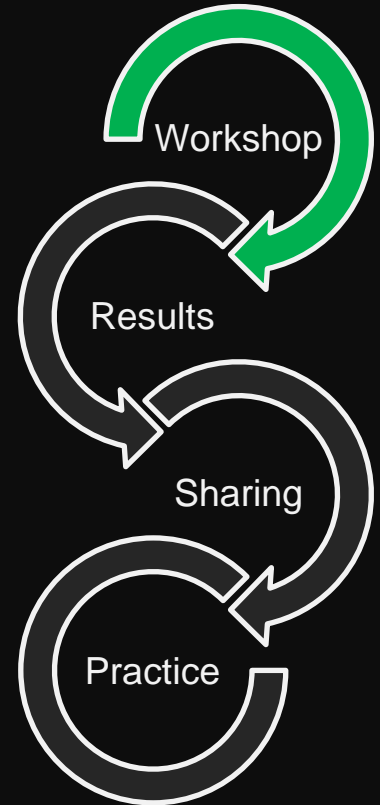
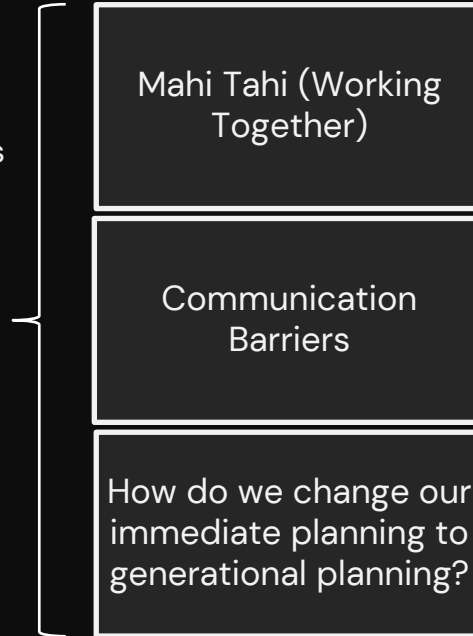


# METHODOLOGY

The most important part of the workshop was to get the right people to the table. Dr Kepa Morgan and the wonderful Troy Brockbank introduced the topic and set the scene for workshopping elements by giving examples of their own mahi in operationalising and delivering Te Mana on te Wai. Ensuing kōrero about the key topics preventing delivery of Te Mana o Te Wai.

There were multiple benefits from the discussion for the attendees:

- *Acknowledgement of the issues around current communication*
- *A softening of the difficulties by finding different paths to the outcomes we want*
- *Breaking down the barriers by sharing and building familiarity, trust, and common interest with each other*



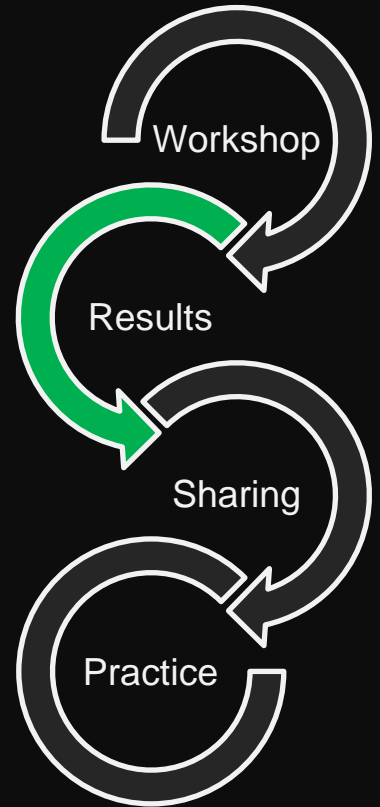


# METHODOLOGY

Notes from the workshop were reviewed with common themes becoming apparent throughout the discussions:

Barriers		
#	%	Theme of Comment
30	41%	Trust
20	27%	Value
12	16%	Establish Early
8	11%	Community
4	5%	Miscellaneous

Changes to Long Term Planning		
#	%	Theme of Comment
6	60%	Te Ao Māori
4	40%	Building Community Together



# 03 DISCUSION: MAHI TAHI

---

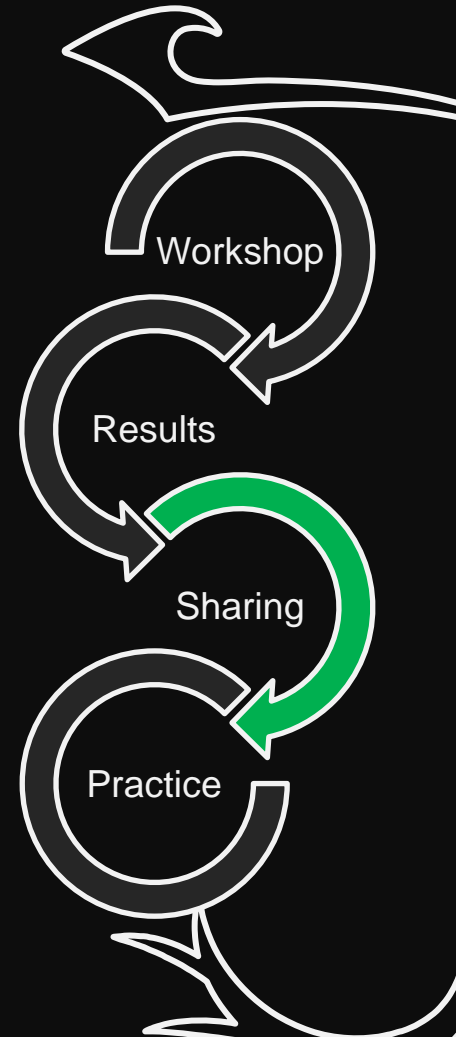


# MAHI TAHI (WORKING TOGETHER)

Industry work has shown that partnership improves Aotearoa's waterways, water systems, and receiving environments. Successful partnerships are, unfortunately, not as frequent as we'd like.

Partnership should be long lasting and focused on individual relationships.

Staff turnover is a large risk – increase stability by having clear succession planning and employing Māori Specialists

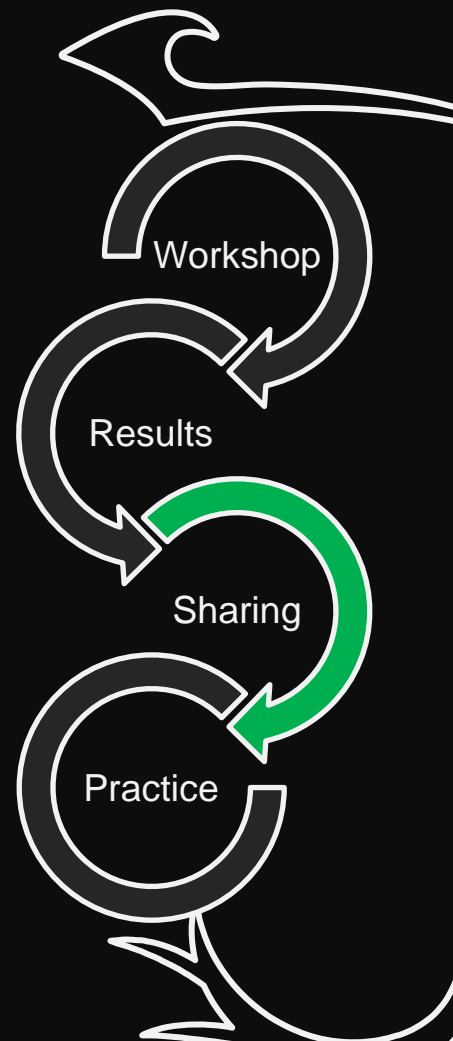


# MAHI TAHI

Kōrero indicated that the feeling of attendees was that the first priority in Te Mana o te Wai should remain the mana and wairua of wai. The use of water for people and commercial applications comes secondary.

Working together needs to be founded on:

- Better understanding of Te Ao Māori by the Water Industry
- Partnership with the Mana Whenua of the wai you want to improve



# 03 DISCUSSION: COMMUNICATION BARRIERS

---



# COMMUNICATION BARRIERS

Building meaningful connections and relationships

- Building Trust, Respect and Community
- Valuing Te Ao Māori – Timing



# COMMUNICATION BARRIERS



*He taonga te whakarongo*

Building Trust, Respect and Community

- Transformational not transactional
- Succession Planning
- Channels for communication – be aware
- Tikanga
- Whakapapa
- Kōrero/Whakarongo

*Te tōia, te haumatia*

*I orea te tuatara, ka patu ki waho*

# COMMUNICATION BARRIERS



- Valuing Te Ao Māori
- Kaitiaki – Tikanga, Te Reo Māori
- Expertise
- Time/Timelines
- Capacity
- Opportunities/Connections
- Mātauranga

*He kai kei aku ringa*

*Whaowhā te kete mātauranga*

*Waiho i te toipoto kua i te toiroa*



# 03 DISCUSSION: INTERGENERATIONAL PLANNING

---



# CURRENT STATE OF PLANNING IN THE WATER INDUSTRY



## REACTIVE

Based on political agendas  
or budget constraints/  
opportunities

---



## WESTERN SCIENCE

Reliant on science and  
data to inform



## RESPONSIVE


Responding to environmental  
events

---



## PRIORITISED

Highest risk/most critical  
done first



# TE AO MĀORI APPROACH



## TE TAIAO FOCUSED

Environment is priority.  
Everything is interconnected

---



## KŌRERO TUKU IHO

Historical stories and oral  
traditions. Look to the past to  
inform the future



## MĀTAURANGA MĀORI


Founded on historical, current  
and future knowledge of  
Tangata Whenua

---



## TIKANGA

Follows the correct process  
to ensure the outcome is  
tika/correct



# AN ALIGNED & INTEGRATED APPROACH



## RELATIONSHIPS ARE KEY

Creating space for both partners  
to share their expertise

---



## MĀTAURANGA MĀORI

Gifted and interwoven by iwi  
reps ONCE trust has been  
built – differs iwi to iwi.



## ADEQUATE RESOURCE


Ensuring there is both pūtea  
and adequate time for iwi  
reps to engage

---



## RECIPROCITY

Dual aspirations. Equal  
respect



# 04 CONCLUSION

---



# WHERE TO FROM HERE?



## COMPLEXITY

The workshop showed through the rich kōrero how challenging this space can be

---



## FURTHER WORK

Further work is needed to better understand how to deliver Te Mana o te Wai in Te Taiao



## POSITIVE FUTURE

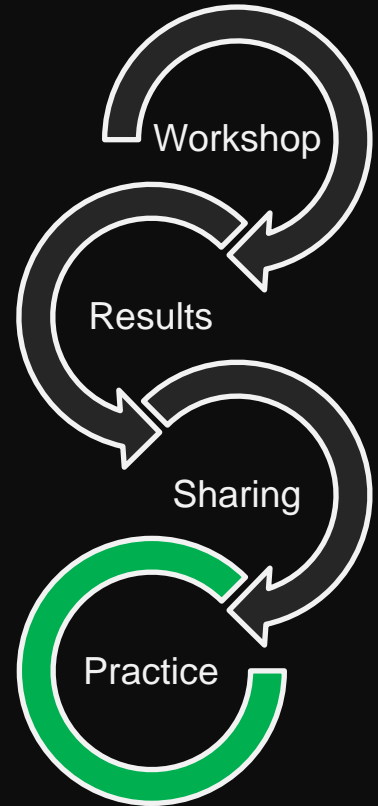
Collective insights from attendees painted a positive picture for the future of the Water Industry

---



## IMPORTANT!!!

Now more than ever is the time to prioritise this mahi and make an effort to connect with Mana Whenua



# KARAKIA WHAKAMUTUNGA

Unuhia, unuhia  
Unuhia ki te uru tapu nui  
Kia wātea, kia māmā, te ngākau,  
te tinana, te wairua i te ara takatā  
Koia rā e Rongo, whakairia ake ki runga  
Kia tina! TINA!  
Hui e! TĀIKI E!



Ngā Mihi | Thank you!  
He Pātai? | Any Questions?

