



Pukehāngi, Rotorua

Lessons from co-development of Stormwater Management Plans – Enhancing outcomes.

Liam Foster & Lani Kereopa



Proudly brought to you by Water New Zealand

Stormwater 2024
15–17 May | Takina Wellington Te Whanganui-a-Tara

Agenda

- Introduction
- Context
- Ko au ko wai, ko wai ko au
- Our collaborative delivery approach
- Outcomes
- Lessons learnt & opportunities for Aotearoa


Proudly brought to you by Water New Zealand

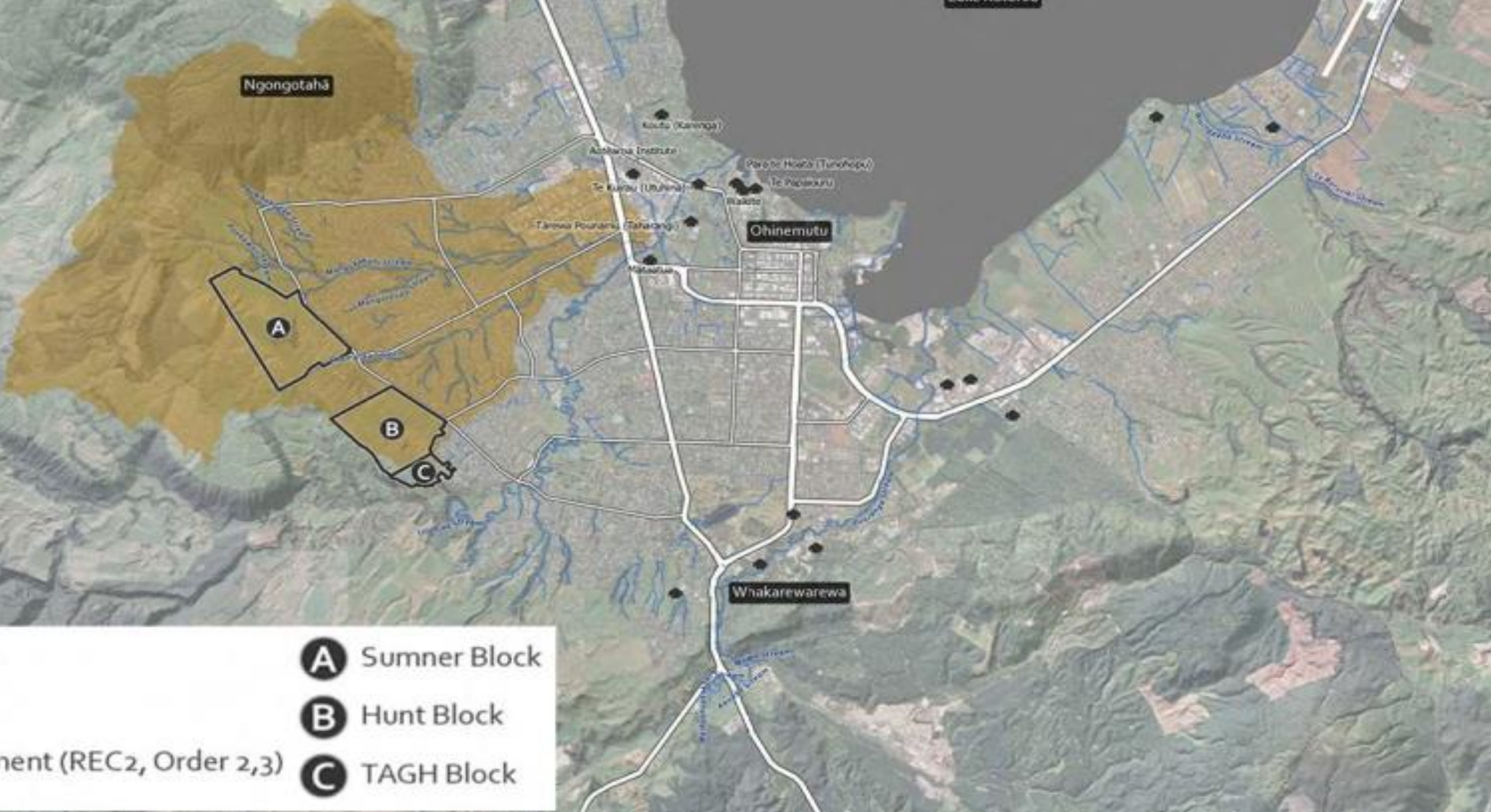
Stormwater 2024

15–17 May | Takina Wellington Te Whanganui-a-Tara

Context

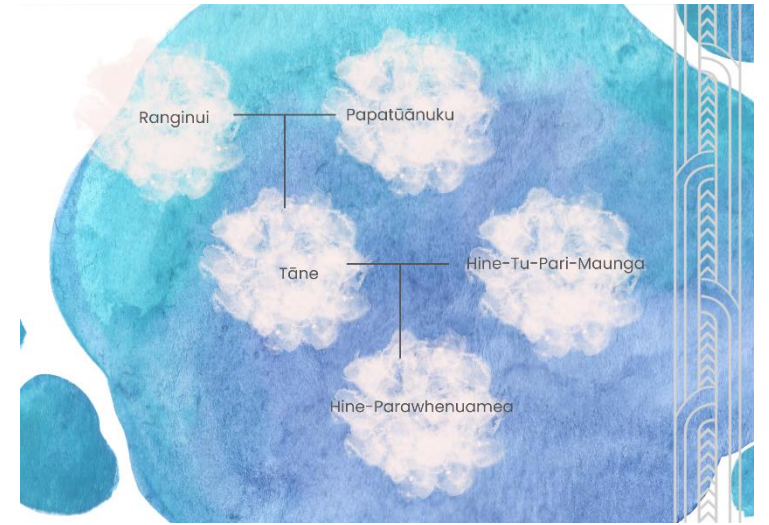
LEGEND

	Site Blocks		Sumner Block
	Marae		Hunt Block
	Waterway		TAGH Block
	Site Catchment (REC2, Order 2,3)		





Ko au ko wai, ko wai ko au

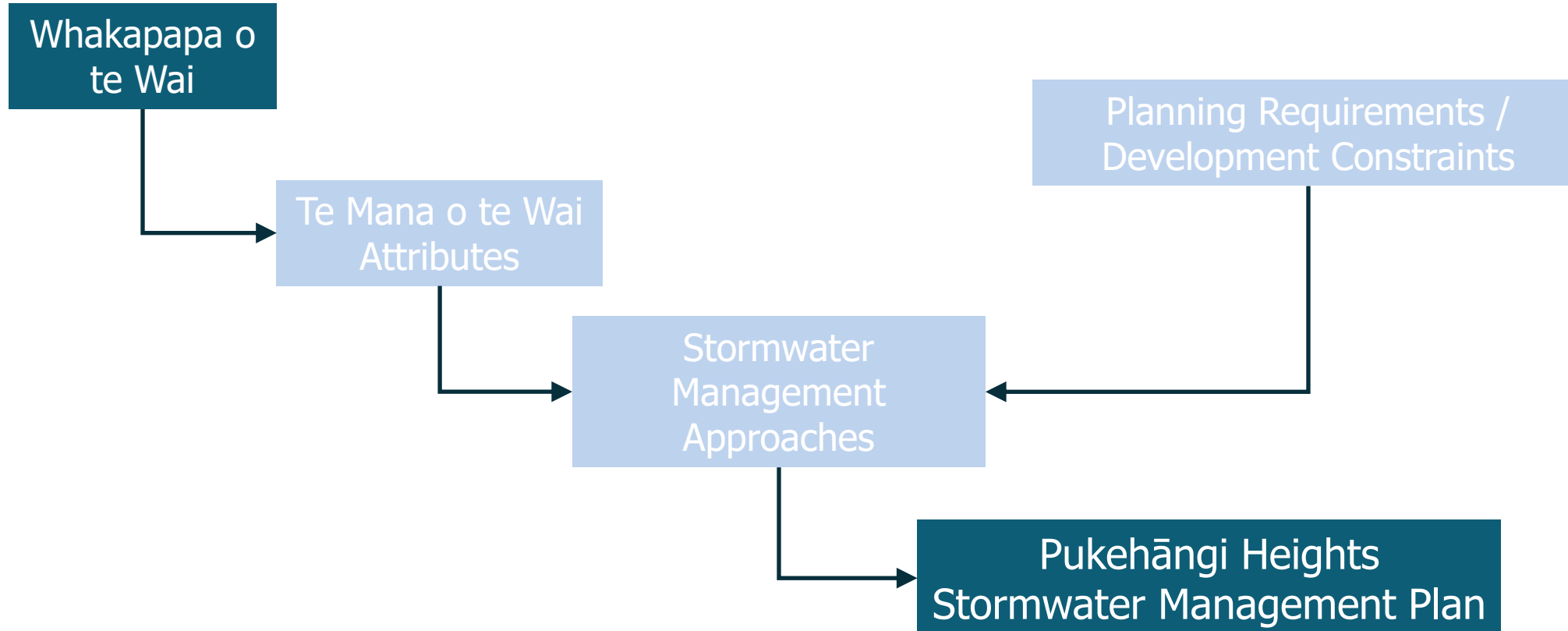


Proudly brought to you by Water New Zealand

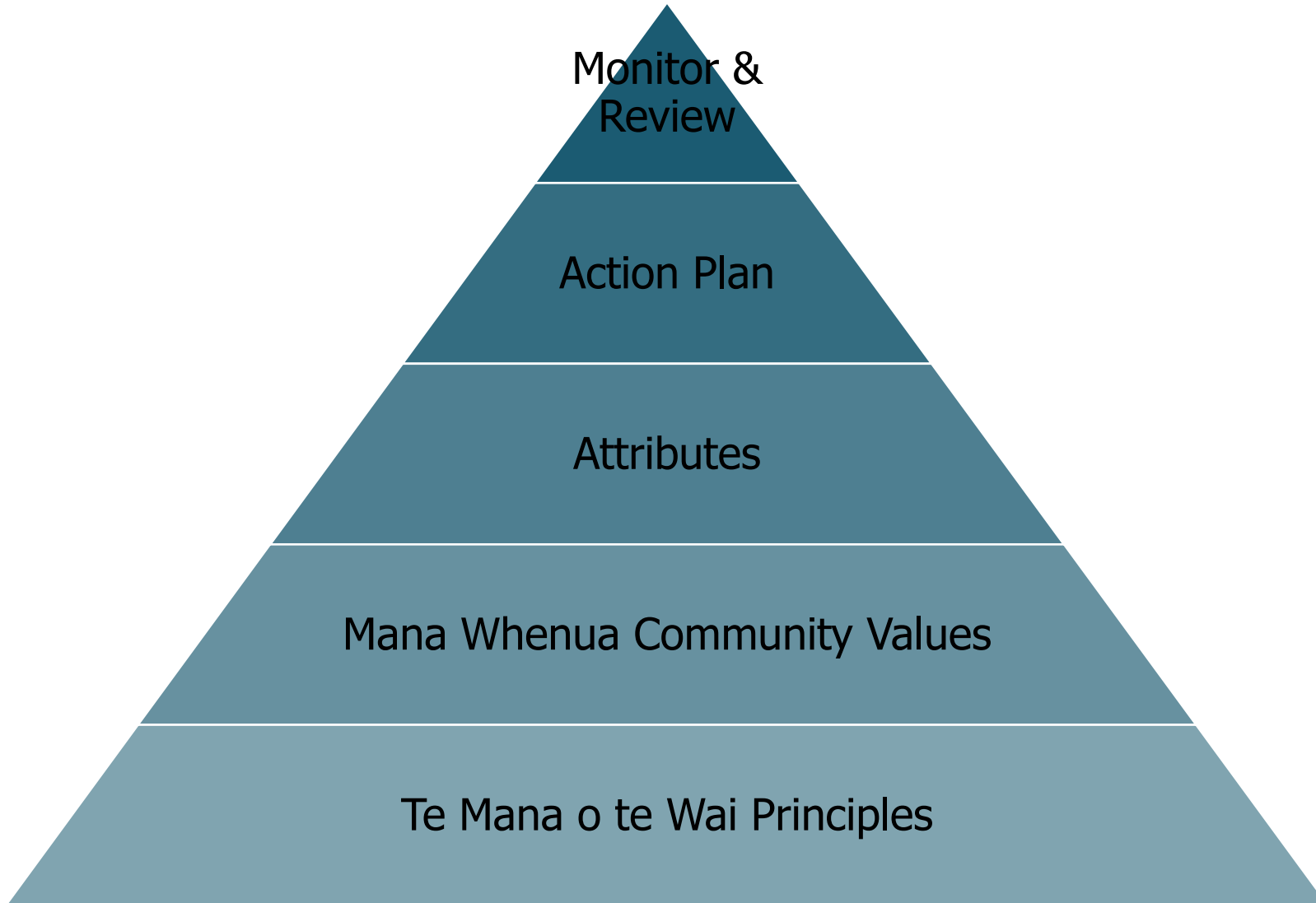
Stormwater 2024

15-17 May | Takina Wellington Te Whanganui-a-Tara

Stormwater Management Framework



Our Foundation



Collaborative Delivery

Shared Vision & Goals

- Reduce the risk of flooding downstream.
- Improve the quality of stormwater discharged from the development, by implementing water-sensitive design approaches across the site.
- Enhances the mauri of the waterways that are important for mana whenua (Mangakākahi, Otamatea, Utuhina, and Rotorua).
- Protects and restores mahinga kai opportunities / sites for future generations.
- Integrates mātauranga Maori (Māori knowledge) and cultural practices into the design and implementation of The Plan.

Collaborative Delivery

Governance, Communications & Capacity Building

Joint
Management
Committee

Technical
Working Group



Regular hui

Workshop
Sessions

Decision Making
Framework

Collaborative Delivery

Core values / Principles

Mana whakahaere

- Requirement to collaborate
- Resourced
- Supporting policies / approach

Manaakitanga

- Reduce downstream flooding
- Monitoring influence

Mātauranga

- Te Whakapapa o te wai
- Joint adaptive management

Hungatiakitanga

- Enhance mahinga kai
- Maintain continuous contact

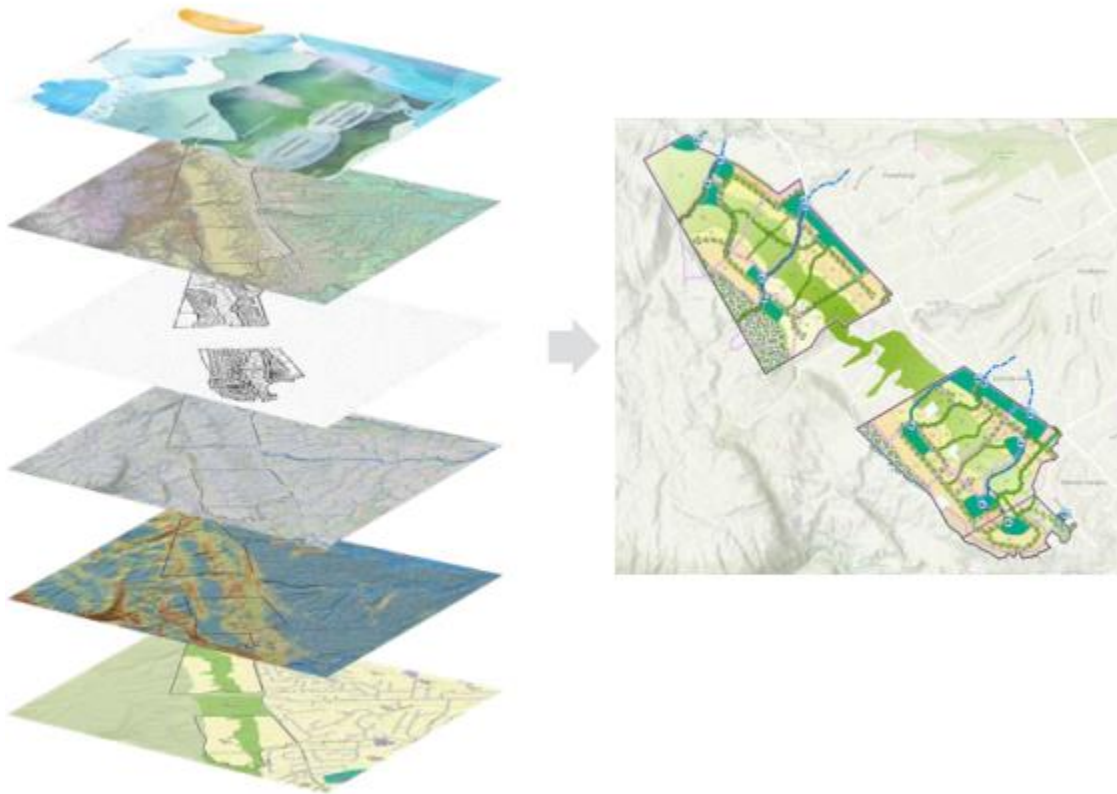
Principle	Values	Outcomes	Attributes
<p>Mana Whakahaere</p> <p>The power, authority, and obligations of tangata whenua to make decisions that maintain, protect, and sustain the health and wellbeing of, and their relationship with, freshwater (NPS-FM 1.3(4)(a))</p>	<p>Mana</p> <p>We are the children of Rangi and Papa and as mana whenua and hungatiaki it is our role to protect the mauri of our whenua, wai, geothermal and taonga species.</p>	<p>Mana whenua leadership: Mana whenua take lead role in management of activities that impact the environment</p>	<ul style="list-style-type: none"> • Mana whenua are involved at all levels of decision-making where identified they wish to participate. This includes opportunities for mana whenua to take leadership i.e. transfer of powers / joint ownership of SMP
		<p>Partnership: Genuine partnership between mana whenua and Crown / crown agencies to give effect to mana whenua values.</p>	<ul style="list-style-type: none"> • Adequate resourcing to enable mana whenua participation • Transparency, open dialogue, informed decision- making that includes feedback loops and regular, clear reporting. Dispute resolution processes are in place.
		<p>Engaging across all tangata whenua: All tangata whenua relationships to taiao respected and upheld</p>	<ul style="list-style-type: none"> • All rights and interest holders impacted by the Proposed Development are mapped (hapū/iwi mana whenua, hapū/iwi down catchment, landowners, TALT, koeke) and offered different ways to engage with the SMP (i.e. for the Mana Whenua Entities, review and approval of SMP, for other Te Arawa iwi and hapū, SMP is shared to help inform wider catchment planning), including processes to ensure accountability back to mana whenua rōpū
	<p>Mātauranga</p> <p>Hapū / iwi knowledge systems and world views guide the exercise of our kaitakitanga</p>	<p>Mātauranga guides decision- making</p> <p>Mātauranga sovereignty: Mātauranga is protected from exploitation and improper use</p>	<ul style="list-style-type: none"> • TMotW, Te Whakapapa o te Wai and Mana whenua values frame the SMP. • Adaptive management methods are adopted in the SMP. This includes ensuring mātauranga approaches within the SMP are informed by monitoring, changes within the taiao / climate change, and changes within the legal, policy and planning space, and are given the opportunity to adapt. • Mātauranga is protected from exploitation and improper use

Collaborative Delivery

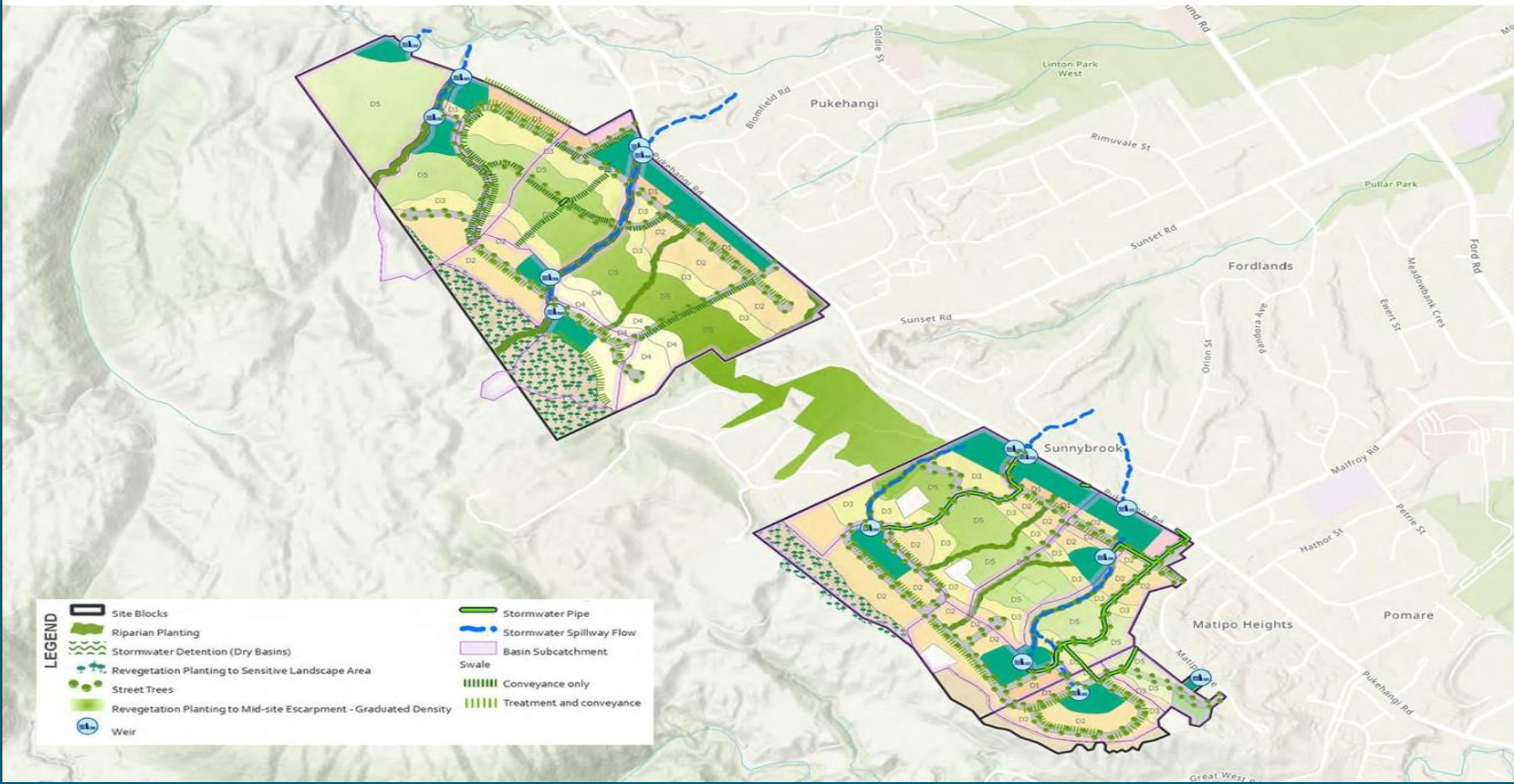
Mahi Tahī | Co-design

Design Principles

1. Ki uta ki Tai
2. Enhanced mauri
3. Healthy Mahinga Kai
4. Equitable allocation



PUKEHANGI HEIGHTS STORMWATER MANAGEMENT PLAN - INFRASTRUCTURE, LANDUSE AND VEGETATION – MAP 15

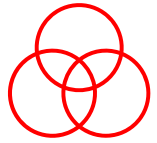


LEGEND

	Site Blocks		Stormwater Pipe
	Riparian Planting		Stormwater Spillway Flow
	Stormwater Detention (Dry Basins)		Basin Subcatchment
	Revegetation Planting to Sensitive Landscape Area		Swale
	Street Trees		Conveyance only
	Revegetation Planting to Mid-site Escarpment - Graduated Density		Treatment and conveyance
	Weir		

Attribute	Assessment
Mana Whakahaere	
<p>Mana whenua are involved at all levels of decision-making where it is identified they wish to participate. This includes opportunities for mana whenua to take leadership i.e. transfer of powers / joint ownership of SMP</p>	<p>PC2 requires RLC to prepare the SMP with landowners, in consultation with the Mana Whenua Entities. RLC and the Mana Whenua Entities have co-designed the SMP with input from the landowners. This has enabled the Mana Whenua Entities to participate in decision-making including drafting the SMP with RLC's planner so having input into final form of SMP; and the adoption of Te Mana o te Wai as a framework to assess stormwater management options. Final decision-making on the content of the SMP sits with RLC as it is RLC's document. However, RLC has indicated a clear intention to ensure the final SMP is agreed with the Mana Whenua Entities. Moving forward, the Mana Whenua Entities and RLC intend to work together closely to address Pukehāngi Heights Development issues that sit outside the SMP process and are considering the adoption of an MoU to address these matters.</p>
<p>Adequate resourcing to enable mana whenua participation</p>	<p>Mana Whenua Entities have been adequately resourced by RLC for their time to input into the SMP and have been supported by a policy / planning consultant throughout the drafting of the SMP. Consideration will need to be given to resourcing of the implementation, review and monitoring of the SMP and this is identified as one issue for the MoU.</p>
<p>Mātauranga is protected from exploitation and improper use</p>	<p>The SMP has been co-drafted by RLC and the Mana Whenua Entities. As such, the Mana Whenua Entities has approved the mātauranga shared within the SMP to ensure it is happy that mātauranga will be in the public domain.</p>
<p>All rights and interest holders impacted by the Proposed Development are mapped (hapū/iwi mana whenua, hapū/iwi down catchment, landowners, TALT, koeke) and offered different ways to engage with the SMP (i.e. for the Mana Whenua Entities, review and approval of SMP, for other Te Arawa iwi and hapū, SMP is shared to help inform wider catchment planning), including processes to ensure accountability back to mana whenua rōpū</p>	<p>The representatives of the Mana Whenua Entities must follow confirmed processes within their entities to approve the SMP. The SMP will be shared by the Mana Whenua Entities with iwi and hapū within Te Arawa to share learnings and inform wider catchment planning.</p>

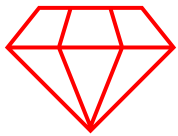
Ka mua ka muri – Lessons



Relationships are key



Value and facilitate aspirations



Knowledge is a gift



Equal trust



Be deliberate and inclusive



Address historic impacts

Our outcomes – A story



Enduring and stronger partnership



Setting up to reverse waterway degradation



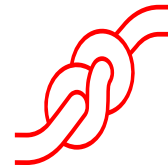
Investment in people & skills



Addresses critical housing needs

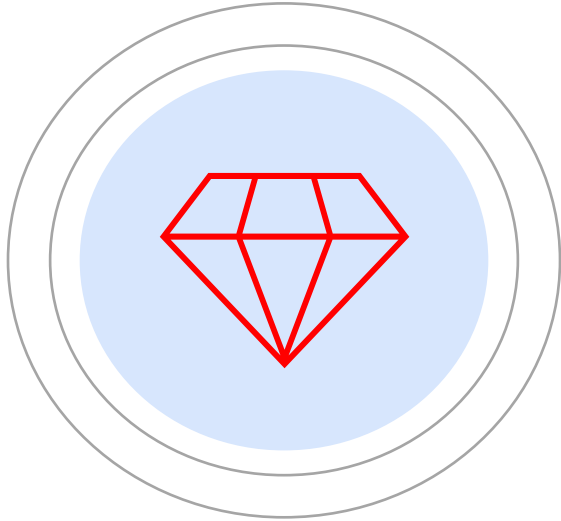


Enhance community resilience

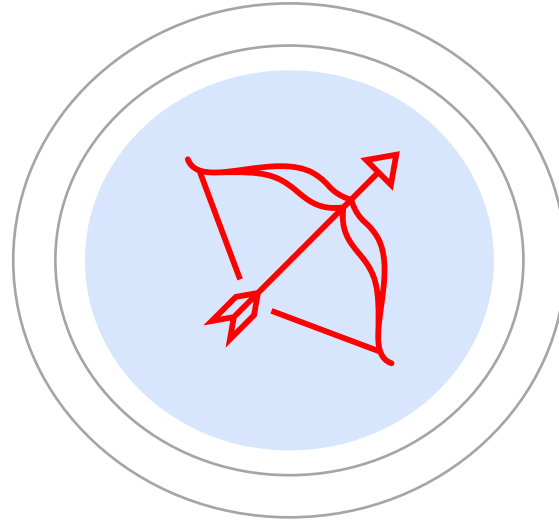


WSuD and Te Mana o te Wai are intrinsically linked

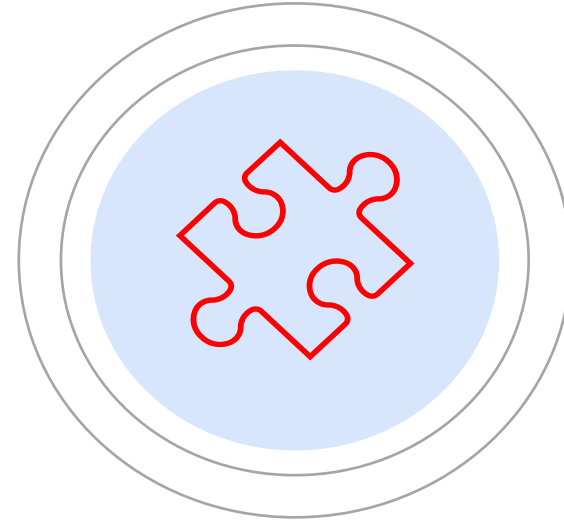
What can you do next ?



Recognise



Embrace



Avoid

Acknowledgements

- Te Rangimarie Williams – Mārearea Consulting
- Stephanie Kelly – Rotorua Lakes Council
- Craig Batchelor – Cogito Consulting
- Kerri-Anne Hancock – Ngāti Whakaue ki Ohinemutu
- The landowners – the Hunt Family and Sunnydowns Development Ltd
- Mōrne Hugo – Boffa Miskell
- Brian Bargh - Ngāti Keaora Ngāti Tuara
- Paul Spurdle & Michael Kerneys - Veros
- Abby Brunsdon & Bryan Duncan – WSP
- Te Aroha Group Holdings

Thank you!
Questions? Patai?