

James Taylor, Korako Edwards, Merchen Naidoo

# Face to Face Engagement: Waikouaiti WTP Upgrade



**Aukaha**  
KIA KAHA, AU KAHA



**DUNEDIN** | kaunihera  
CITY COUNCIL | a-rohe o  
Otepoti



**water**  
NEW ZEALAND  
CONFERENCE & EXPO  
17-19 OCTOBER 2023  
Tākina, Te Whanganui-a-Tara Wellington

# Introductions

**Korako Edwards**

**James Taylor**

**Merchen Naidoo**



# Project Objectives



Focus on addressing community feedback on levels of service



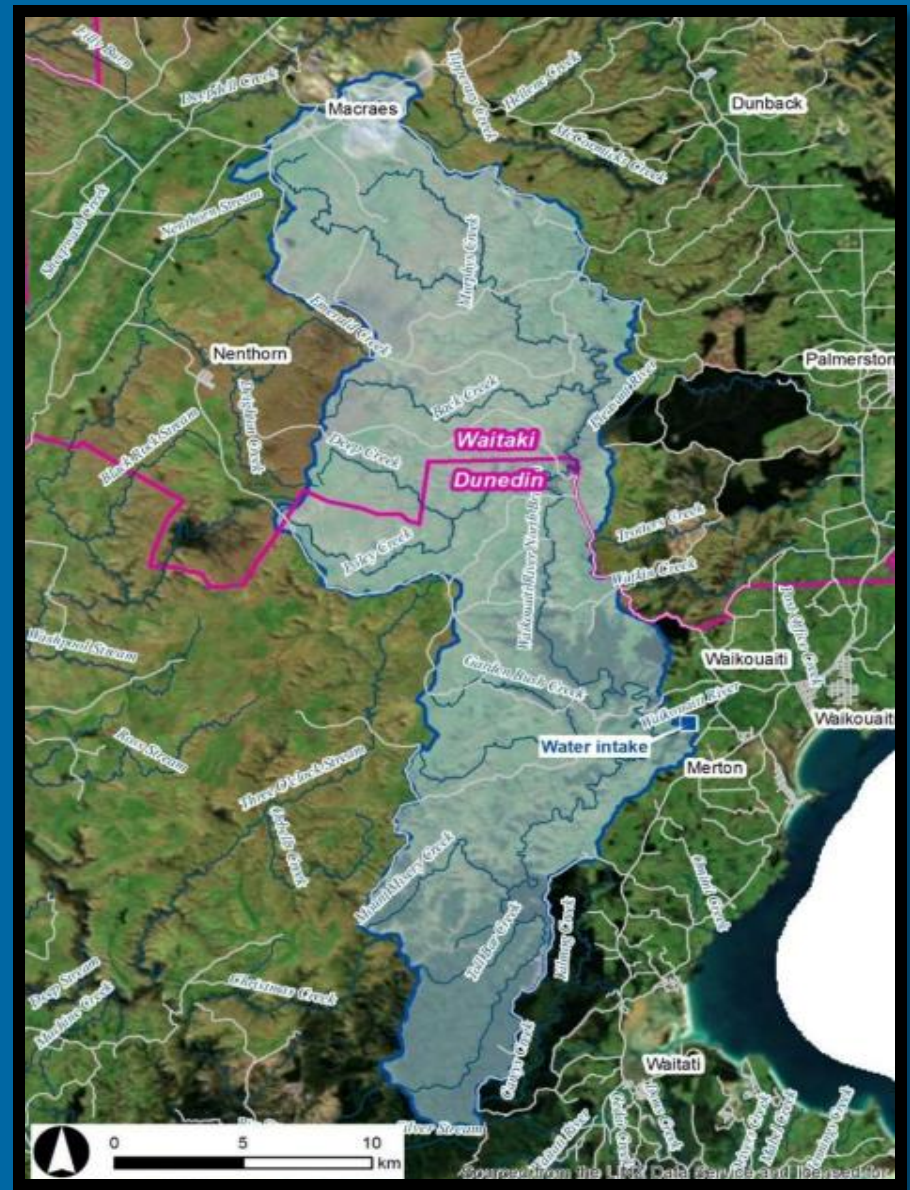
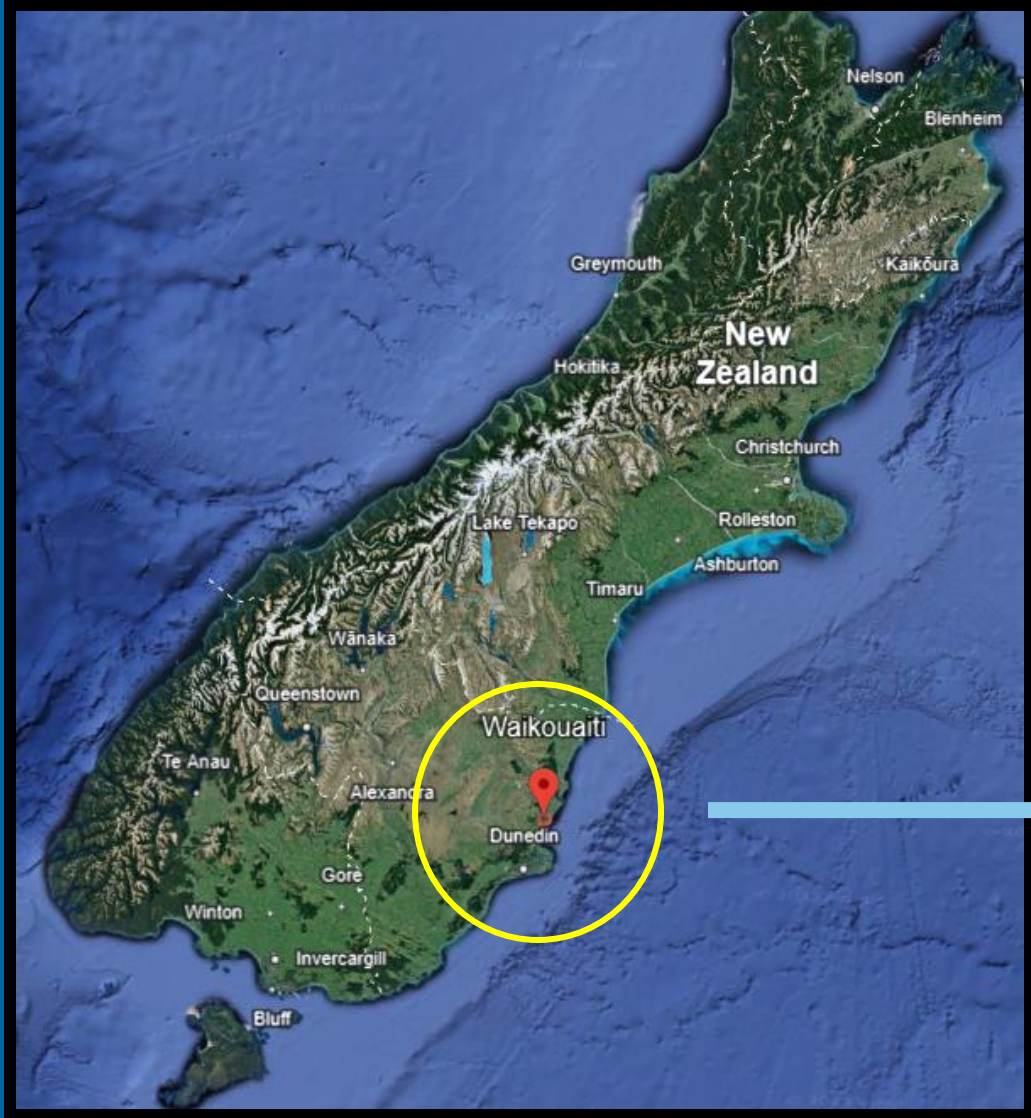
Deliver a plant that improves **operability** and **reliability** to cope with current and future demands



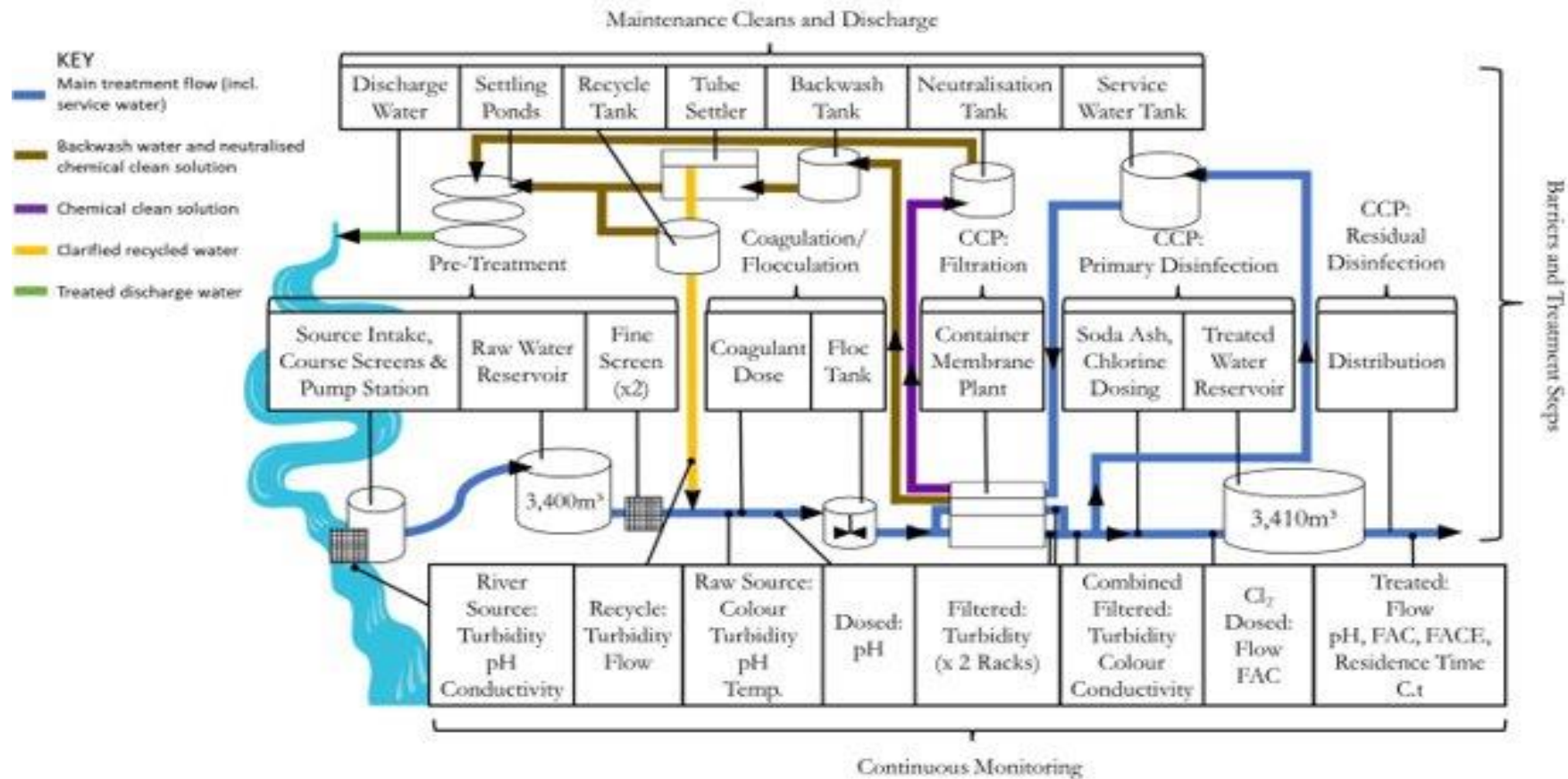
Work **collaboratively** with Kāti Huirapa Rūnaka ki Puketeraki and elected members of the Waikouaiti Coast Community Board as project partners



# Plant Location



# Waikouaiti WTP Process Description





# Intake Scope of Works



- New weir, intake pipe, access stairs
- New screen, including air burst cleaning equipment
- New raw water pumps
- New sump pumps
- New instrumentation
- New power poles
- MCC replacement and VSD's for raw water pumps
- SCADA and PLC upgrade
- Standby power, UPS

# Treatment Plant Scope of Works



- Refurbish existing raw and treated water reservoirs – convert both to raw water storage
- 2 new treated water reservoirs
- Taste and odour treatment
- Membrane filtration upgrade
- New backwash discharge pipeline
- Chlorine contact pipe
- New wastewater settling ponds



# Cultural Context



*Kāti Huirapa ki Puketeraki have a deep and enduring spiritual connection to the Waikouaiti River. This paramount awa flows through the Kāti Huirapa ki Puketeraki takiwā and has provided nourishment for the people for generations*



# Waikouaiti River

- Mahika kai
- He Pātaka Wai Ora Stocktake Project
- Mātaitai
- Taiāpure Komiti

Freshwater fish	Birds	Bivalves	Plants
Tuna (longfin and shortfin eel)	Pūtakitaki/Paradise shelduck	Pipi	Watercress
Pātiki (flounder)	Tūi	Tuaki (cockles)	Harakeke (flax)
Īnaka (whitebait)	Kererū	Kākahi (freshwater mussel)	Huruwhenua (ferns)
Kanakana (lamprey)	Moa	tuatua	Pūhā (sowthistle)
Aua (yellow-eye mullet)		Pāua	Tī/kāuru (cabbage tree/edible stem)
Mohoao (spotted flounder)			



# Kanohi ki te Kanohi / Face to Face engagement

- Aukaha directed the project team toward the East Otago Taiāpure Komiti for monthly hui
- 2 years or "1,000 cups tea"
- In person and regular
- On community grounds.
- **Early** in process
- Cultural Impact Assessment prepared ahead of concept design
- Platform to create and influence opportunities throughout the project





# Its not always straightforward



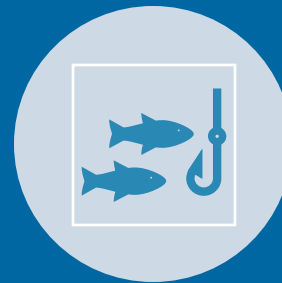
Ultimately mana whenua want to cease water take from Waikouaiti River.



Operating in the Matrix



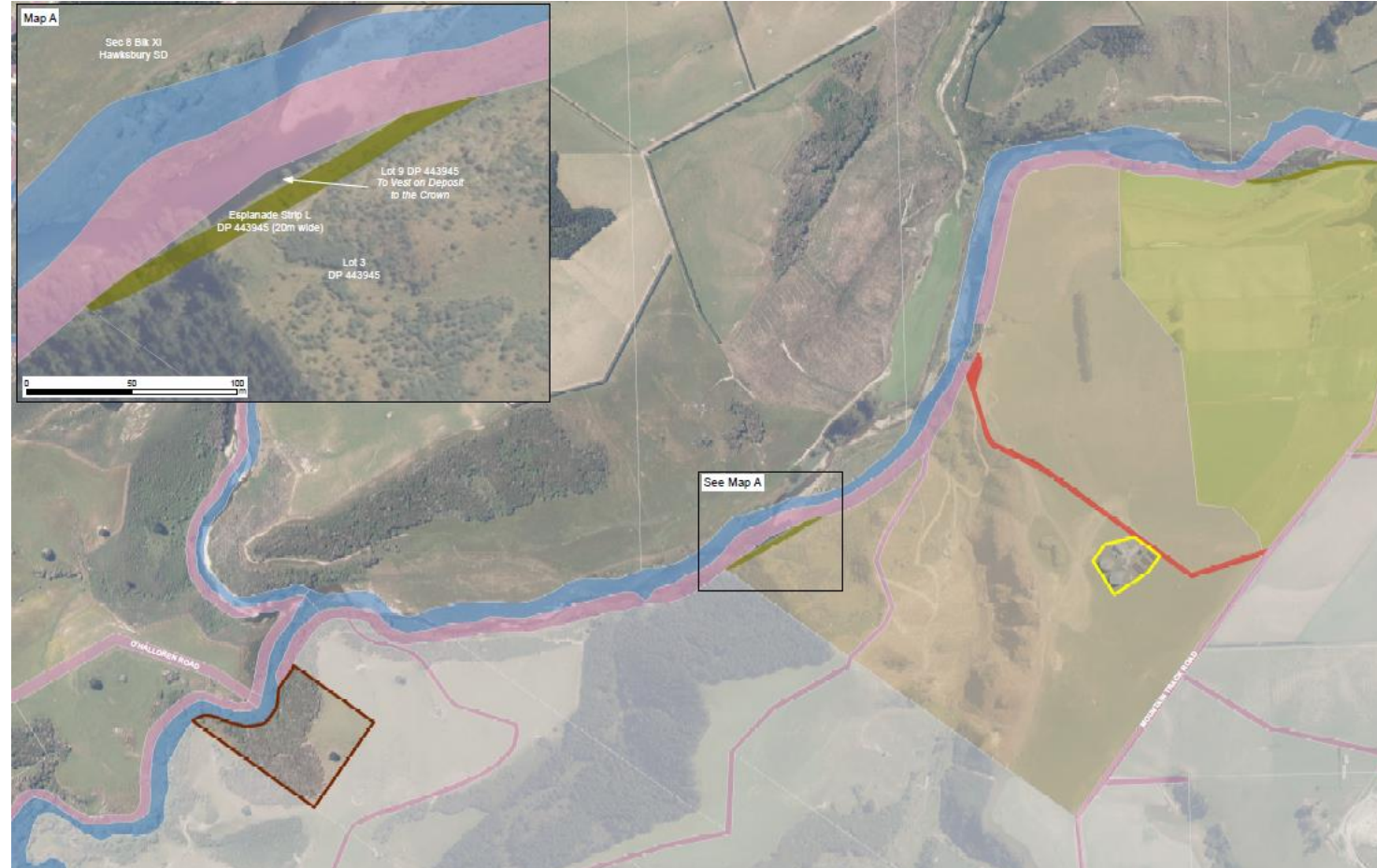
Kaumātua reminding sternly that this is not like any other river.



Ecological investigation under an earlier Fisheries NZ fishing permit.

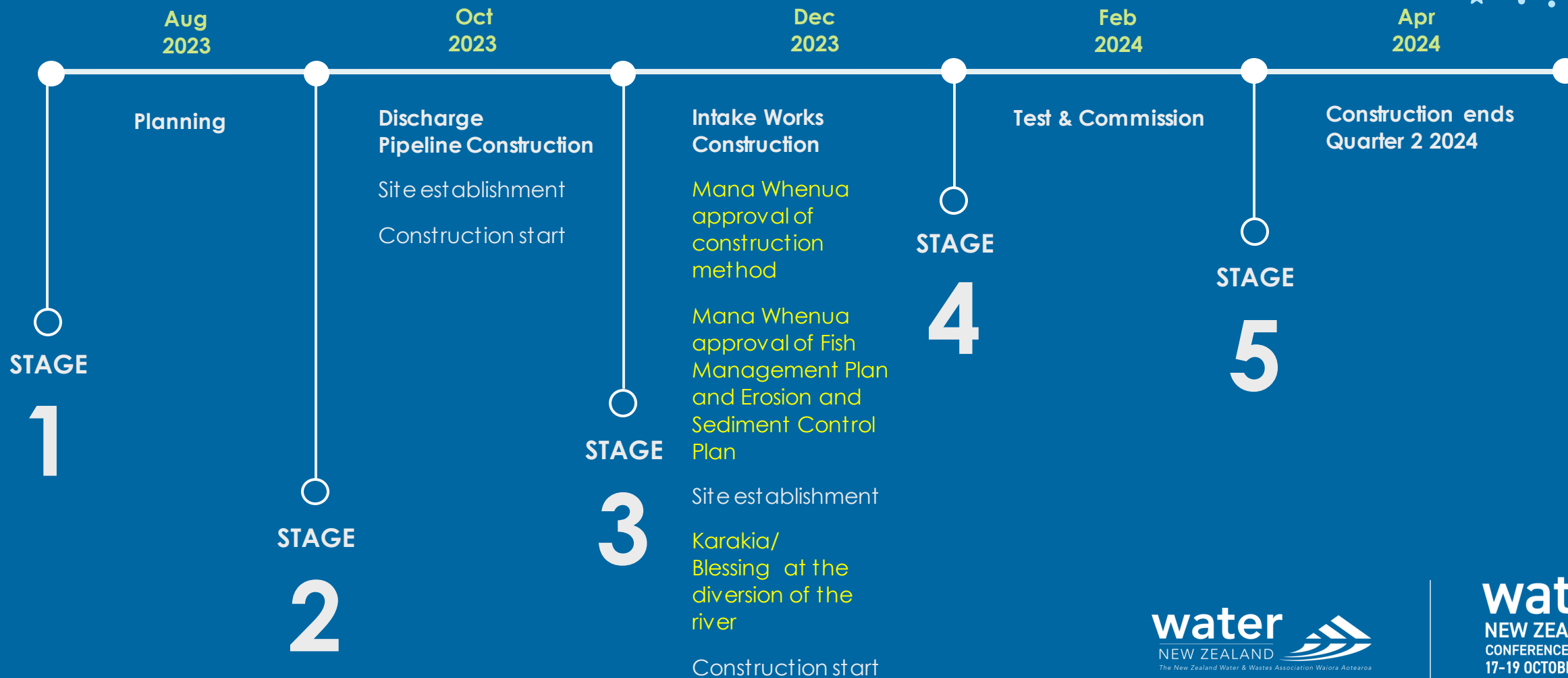
# Outcomes

- Optimisation of Water Take Rates
- New backwash discharge planting solutions
- Access to the awa
- Understanding the correct process of ecological investigations
- Mana to Mana meetings





# Discharge Pipeline and Intake Works



# Discharge Pipeline Swale Planting





# Key Learnings



Early and face to face engagement with mana whenua over an extended time frame allows trust and common understanding to develop.



Co-design initiatives involving mana whenua as part of the project team can help to shape and direct progress so that the needs of all stakeholders are specifically addressed.



This process has been able to address wider iwi concerns around impacts on water, and access to water and traditional food gathering sites, as part of the water treatment scheme development.



Given the changing policy settings and the reflected importance of Te Mana o Te Wai, the relationship and model of engagement from this project will be essential for the successful roll out of water work in Dunedin City in future.