

Brigette Priestley

Restoring the Mauri of the Wai – Using co-management to determine wastewater treatment and disposal



water
NEW ZEALAND
CONFERENCE & EXPO
17-19 OCTOBER 2023
Tākina, Te Whanganui-a-Tara Wellington

Contents

- Background
- Te Mana o te Wai
- Decision making process
- Incorporating Mātauranga Māori
- Lessons Learnt
- Key Takeaways



**BRIGETTE
PRIESTLEY**

Associate
Environmental Scientist

Beca



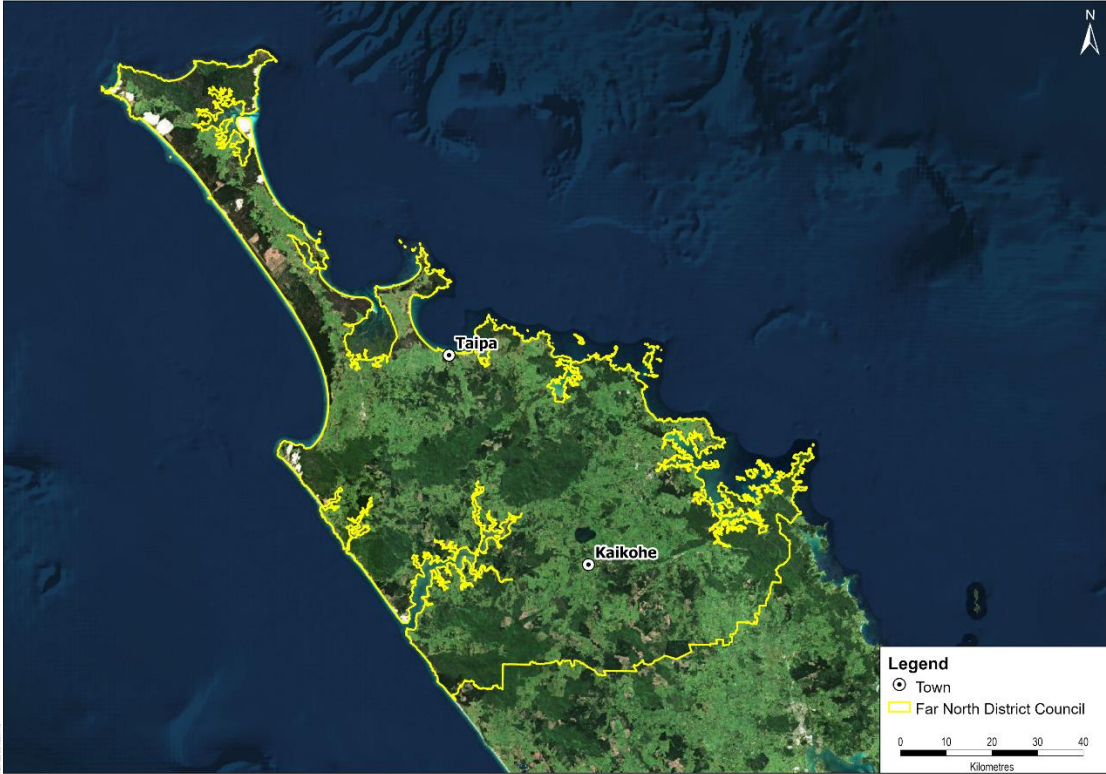
**GARRETT
HALL**

Technical Director –
Environments

Beca

Taipa and Kaikohe Wastewater Treatment Plants (WWTP)

Far North District



Taipa WWTP



- Taipa WWTP – Controversial and complex history
- Resource consent expired in 2008
- New application in 2008 – put on hold
- Regional Council hearing in August 2019
- Consent Order issued March 2021
- Working Group: 3 representatives of Ngāti Kahu, 1 representative of the broader Doubtless Bay community and 2 FNDC staff

Kaikohe WWTP



- Resource consent expired November 2021
- New application in August 2021 – on hold
- Working Group formalised Jun 2022
- Working Group: Ngā Hapū o Kaikohe + FNDC

Introduction

- Resource Consent renewals – the beginning?
- Long histories between mana whenua and local authorities
- Establishing a Best Practicable Option (BPO)

What is a BPO?

The Resource Management Act (RMA) 1991, as amended, defines BPO as follows:

“the best method for preventing or minimising the adverse effects on the environment having regard, amongst other things, to –

- a) The nature of the discharge or emission and the sensitivity of the receiving environment to adverse effects; and*
- b) The financial implications, and the effects on the environment, of that option when compared with other options; and*
- c) The current state of technical knowledge and the likelihood that the option can be successfully applied”*

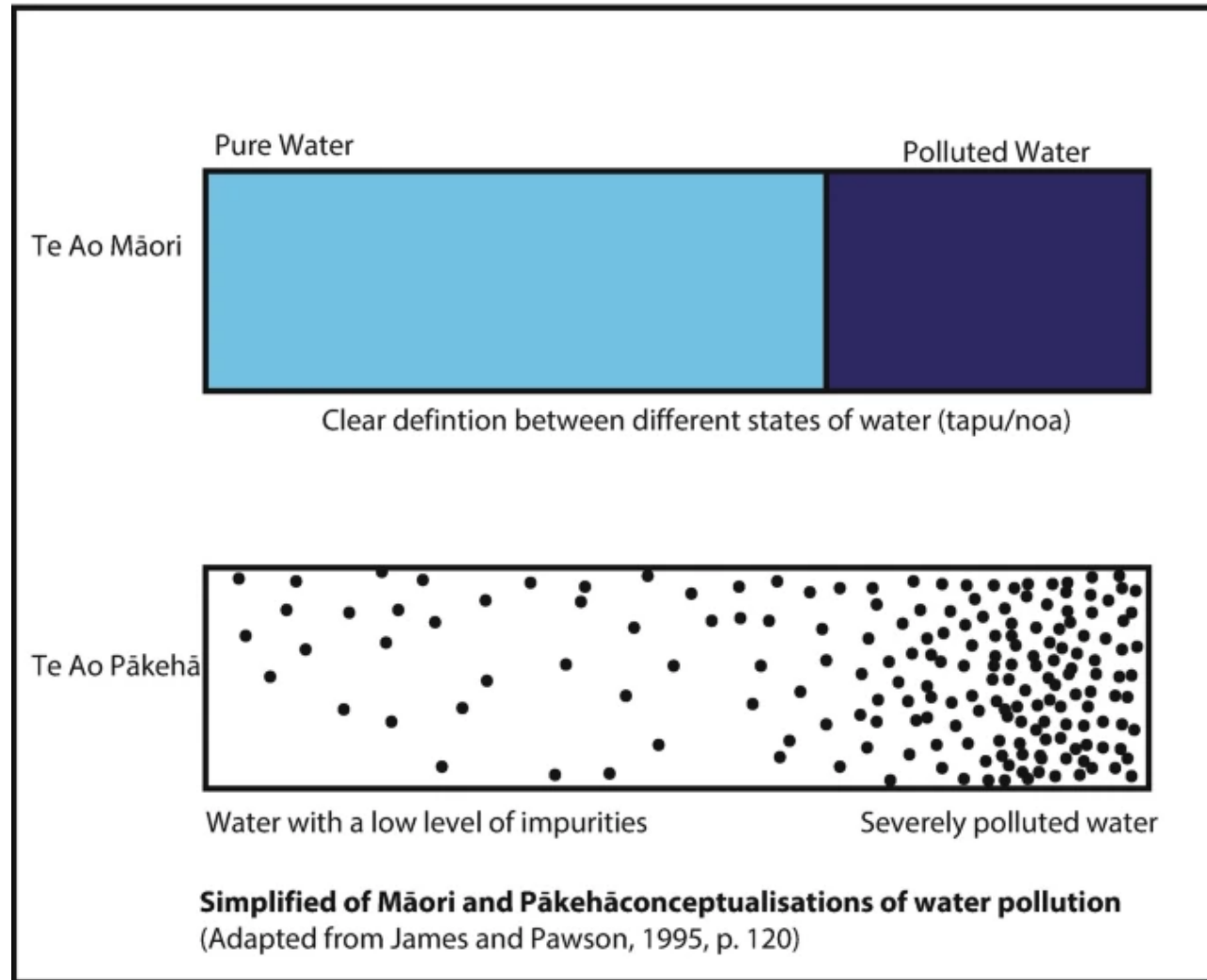
The NPS:FM 2020 and Te Mana o Te Wai

Objective (Part 2)

“The objective of this National Policy Statement is to ensure that natural and physical resources are managed in a way that prioritises:

- (a) first, the health and well-being of water bodies and freshwater ecosystems*
- (b) second, the health needs of people (such as drinking water)*
- (c) third, the ability of people and communities to provide for their social, economic, and cultural well-being, now and in the future.”*

Two World Views on Water Pollution



Source: Parsons et al., 2021, p. 203.

Kanohi ki te kanohi [face to face] workshops

Workshop 1:

- Whakawhanaungatanga/ Trust building
- Information sharing
- Set out objectives and core values

Workshop 2:

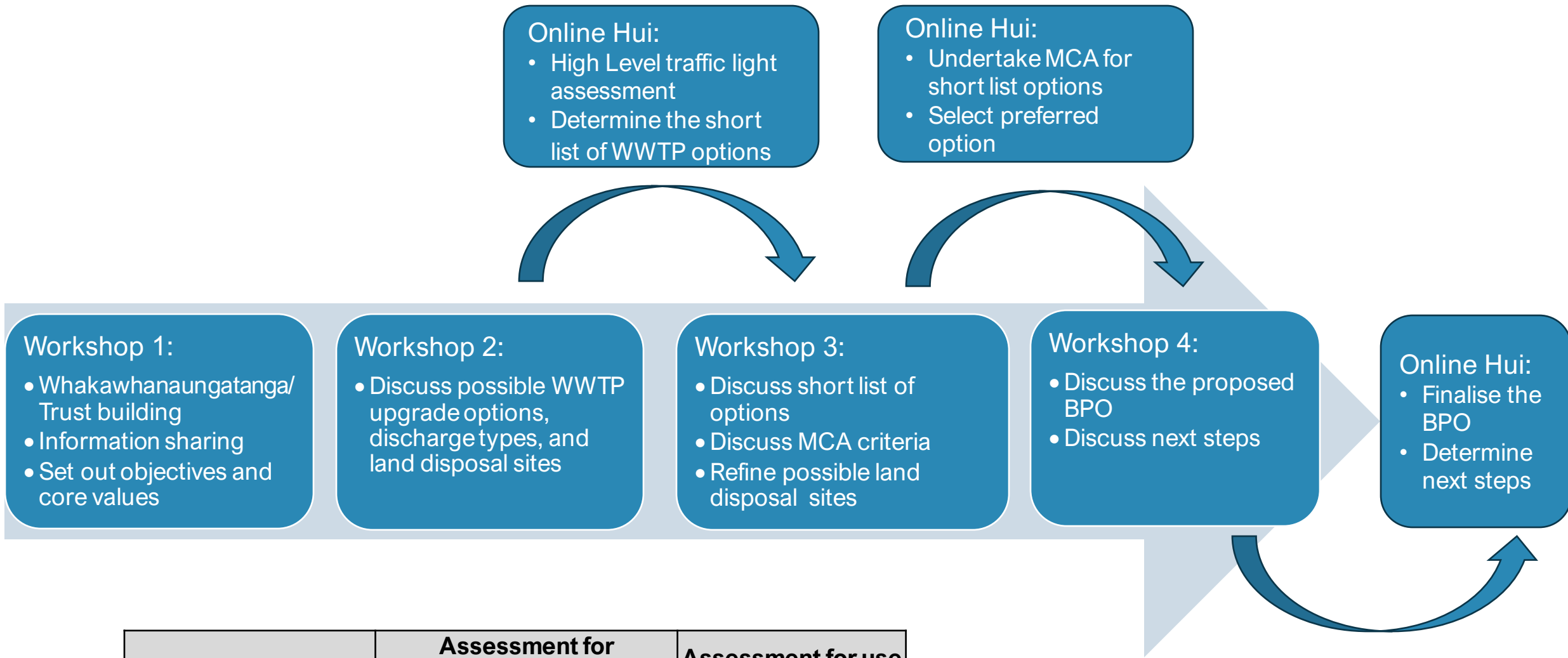
- Discuss possible WWTP upgrade options, discharge types, and land disposal sites

Workshop 3:

- Discuss short list of options
- Discuss MCA criteria
- Refine possible land disposal sites

Workshop 4:

- Discuss the proposed BPO
- Discuss next steps



Traffic Light	Assessment for Shortlisting WWTP Upgrade Options	Assessment for use in MCA
	Preferred	Meets criteria
	Less Preferred	Partially meets criteria
	Not Preferred	Does not meet criteria

Workshop 1:

- Whakawhanaungatanga/ Trust building
- Information sharing
- Set out objectives and core values

Workshop 2:

- Discuss possible WWTP upgrade options, discharge types, and land disposal sites

Workshop 3:

- Discuss short list of options
- Discuss MCA criteria
- Refine possible land disposal sites

Workshop 4:

- Discuss the proposed BPO
- Discuss next steps

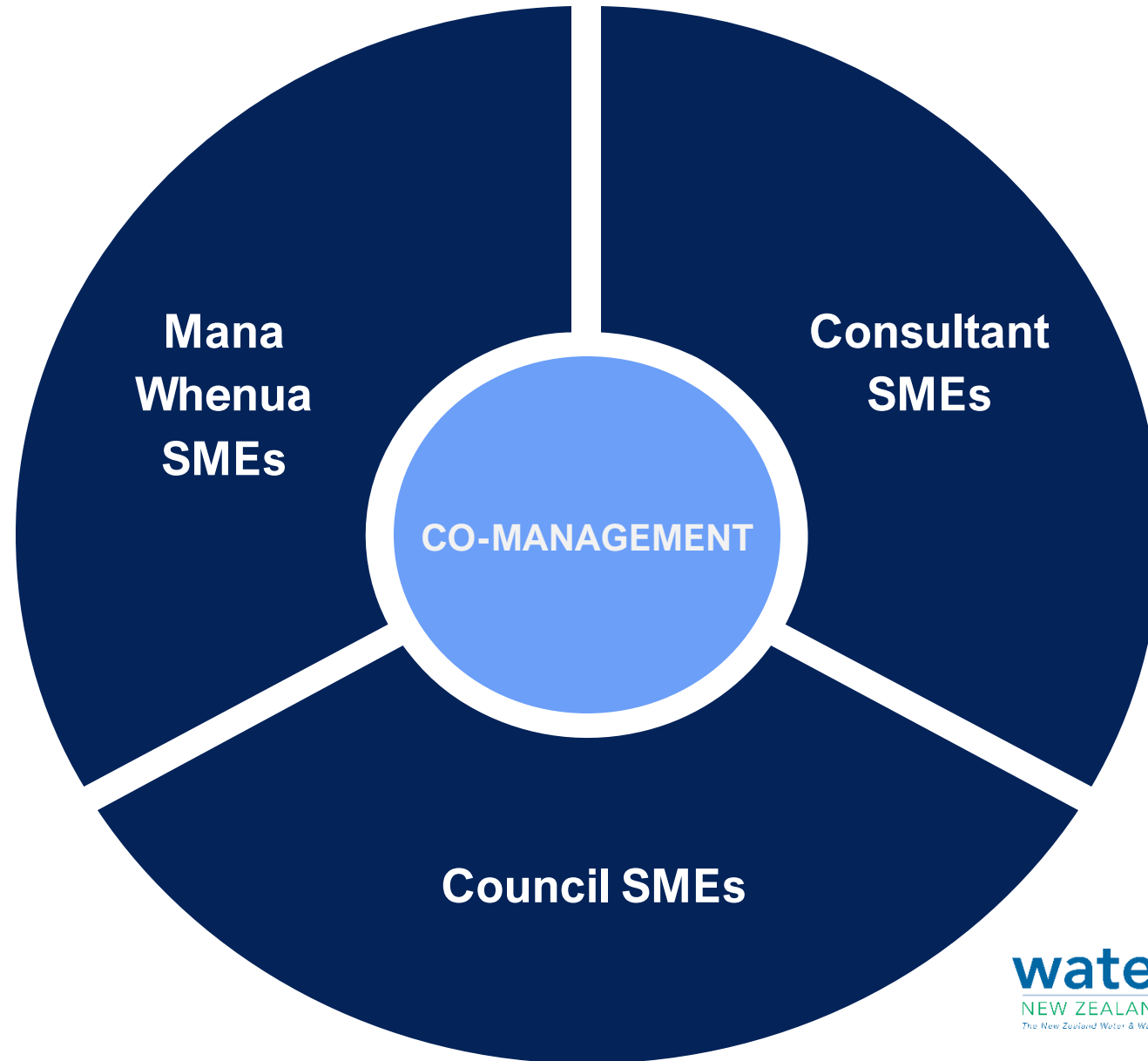
Desktop GIS assessment of viable sites

Develop short list of sites to progress

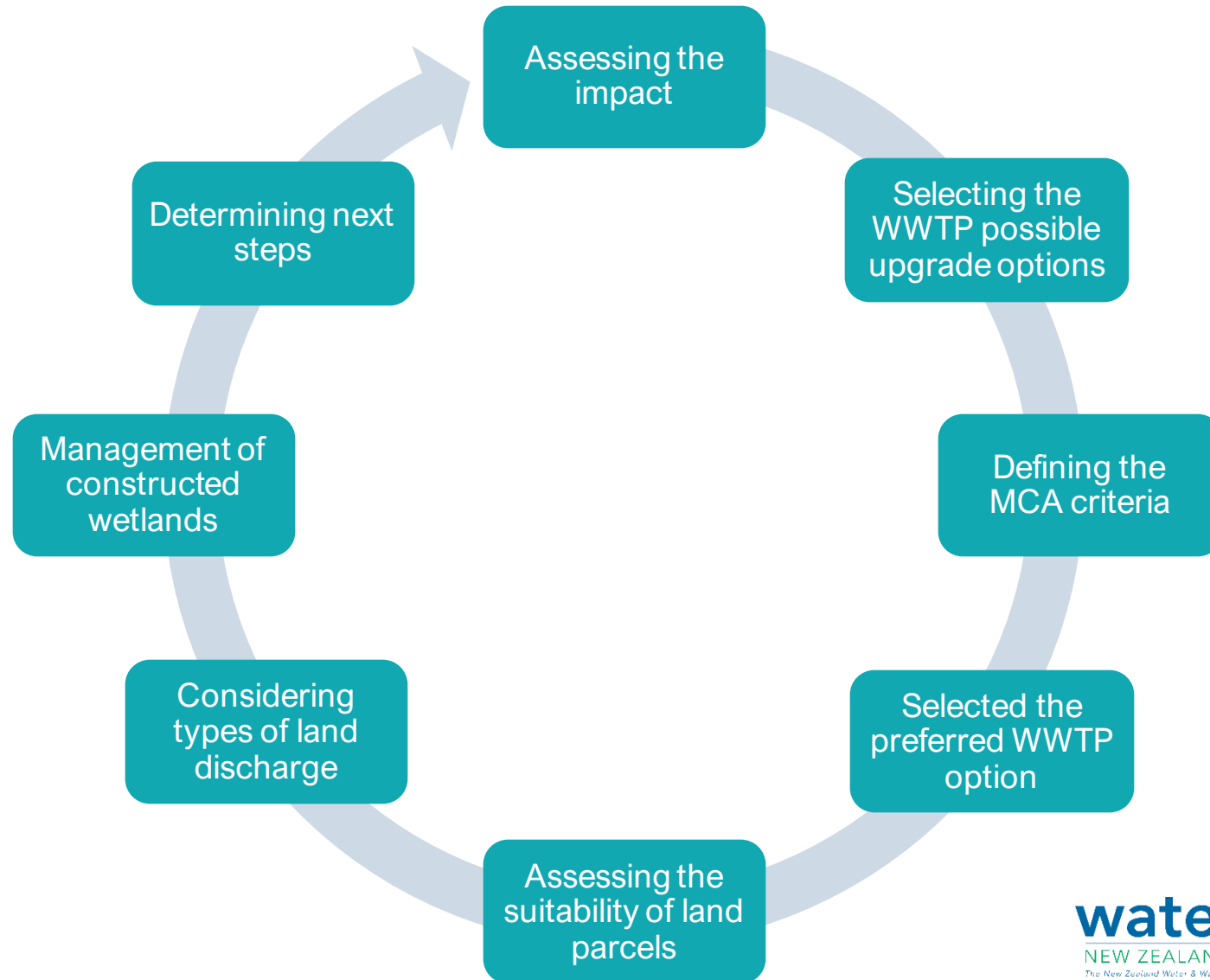
Site investigations and high level concept design



Subject Matter Experts



Incorporating Mātauranga Māori



Lessons Learnt

- Any good co-management approach begins without premise
- How you portray information is key
- Holistic approach to wastewater management needed
- Importance of 'hapu time'
- Achieving consensus and making concessions
- Reporting to Elected Members
- Ongoing journey

Key Take-Aways

- What does Te Mana o te Wai mean for us as water managers?
- Bringing together te ao Pākehā and te ao Māori
- Building trust
- Can we help restore mauri to the wai?

Far North 'co-design' approach provides NZ-first wastewater treatment model, quality engagement with mana whenua

**New Zealand Herald,
3 January 2023**

Matakairiri hapū representative Trudy Allen has been involved in the protection of the wai at Taipa for several years.

She said while there had been some bumps along the way, the Transformation Project had been an excellent example of kotahitangi (unity) between the various groups.

“We wanted to co-design an outcome, to share our different opinions and explore what we could come up with, which was exciting because we’ve never done that before,” Allen explained.

Acknowledgements

- Members of the members of the Kaikohe Working Group and the Taipa Working Group for their hard work in developing BPOs for the Kaikohe and Taipa WWTPs.
- Ben Bowden (formerly FNDC) for his review.
- John Blyth and Jason Tate from Te Ahi Tutata (the Beca Māori Advisory Business) for their peer review and inputs into this paper.

