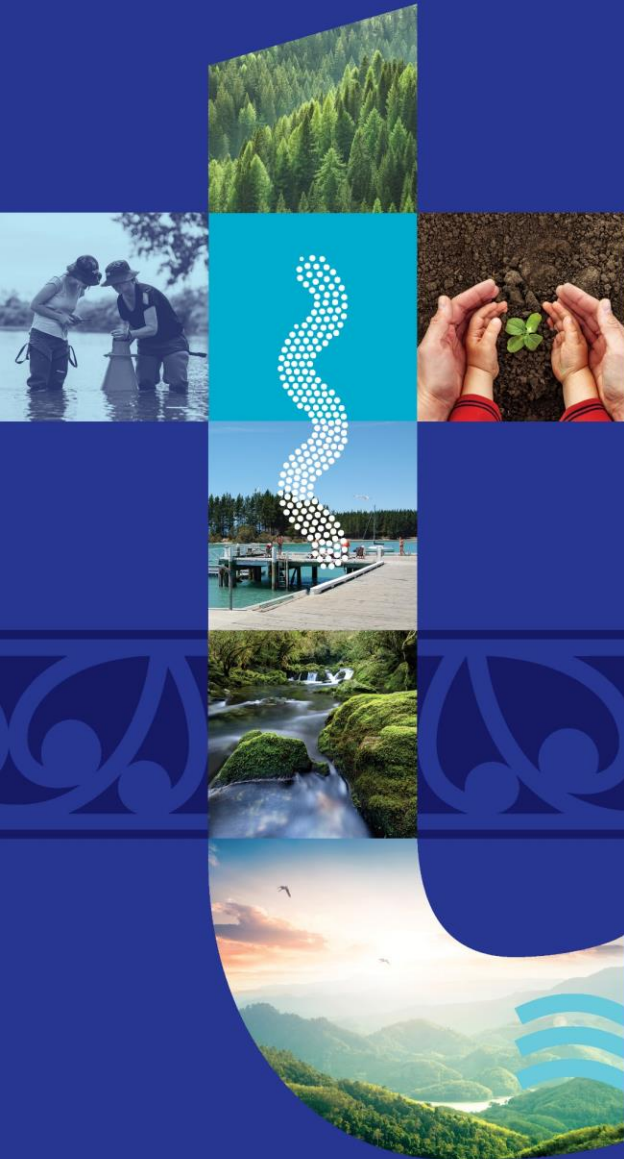


Holistic Stormwater Catchment Plans Just a Pipe Dream?



Thriving and resilient Tasman communities

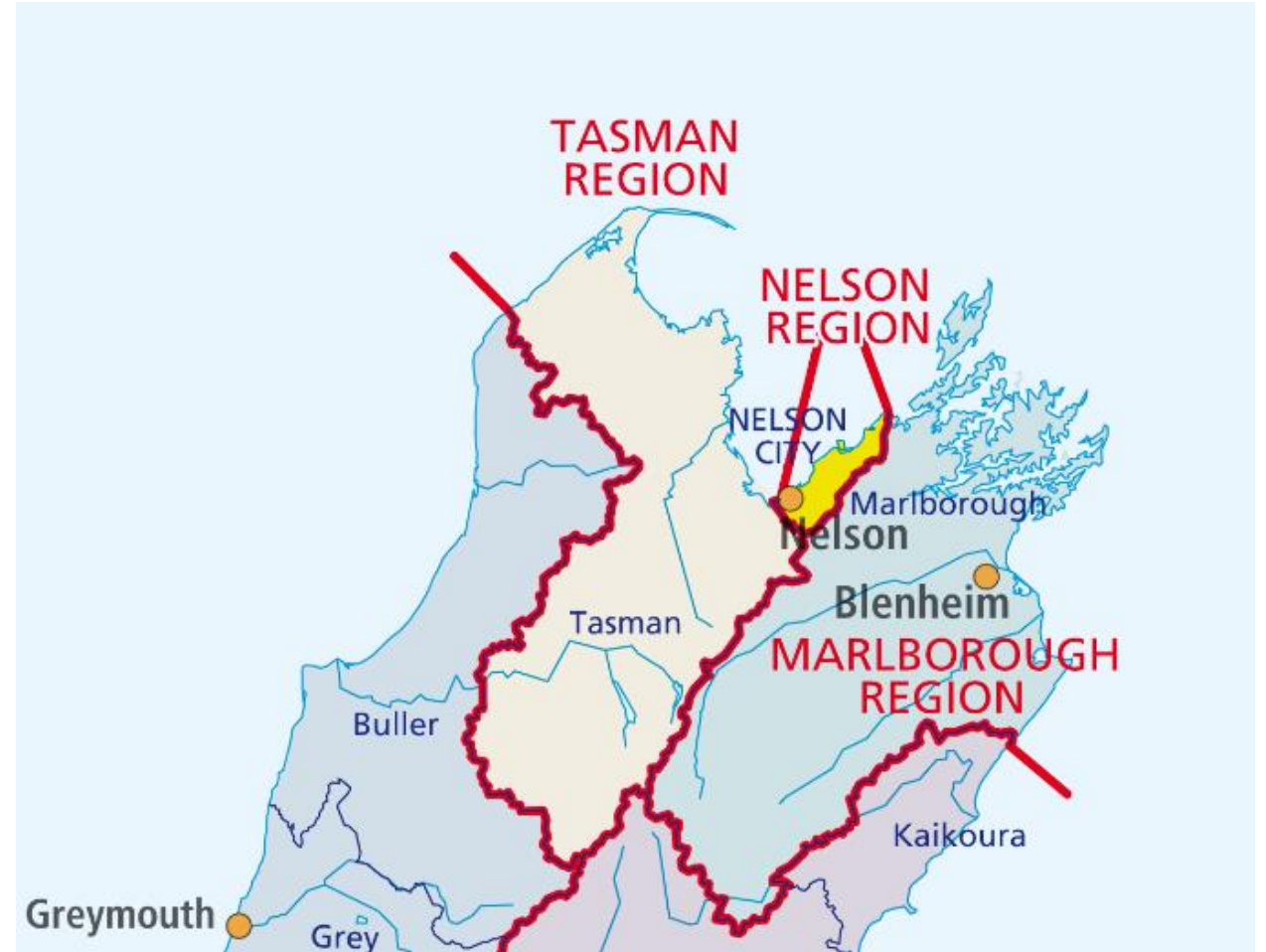
David Arseneau (TDC)
Emma McFarlane (T+T)

 **tasman** | Te Kaunihera o
district council | **te tai o Aorere**

 **Tonkin+Taylor**

Overview

- Tasman District Council (TDC) is a unitary Council located at the top of the South Island – Te Tau Ihu
 - Large area $\sim 9600 \text{ km}^2$
 - Small population $\sim 59,000$
- Like every territorial authority, TDC provides stormwater services to the community
- TDC's approach to stormwater has evolved significantly in the past 5-6 years
- Let's share some challenges and lessons!



Overview

1. Brief look at Tasman's stormwater system and geography
2. How our stormwater approach has changed – similar to many other TAs
3. Some insights or lessons we've learned while trying to change
4. Thoughts on how Water Services Reform may affect this

Tasman's Stormwater Systems

Tasman Stormwater Systems

In total, TDC manages:

- over 14,000 individual property connections
- 187 km of stormwater pipes
- 10 stormwater detention dams
- 15 km of maintained channels

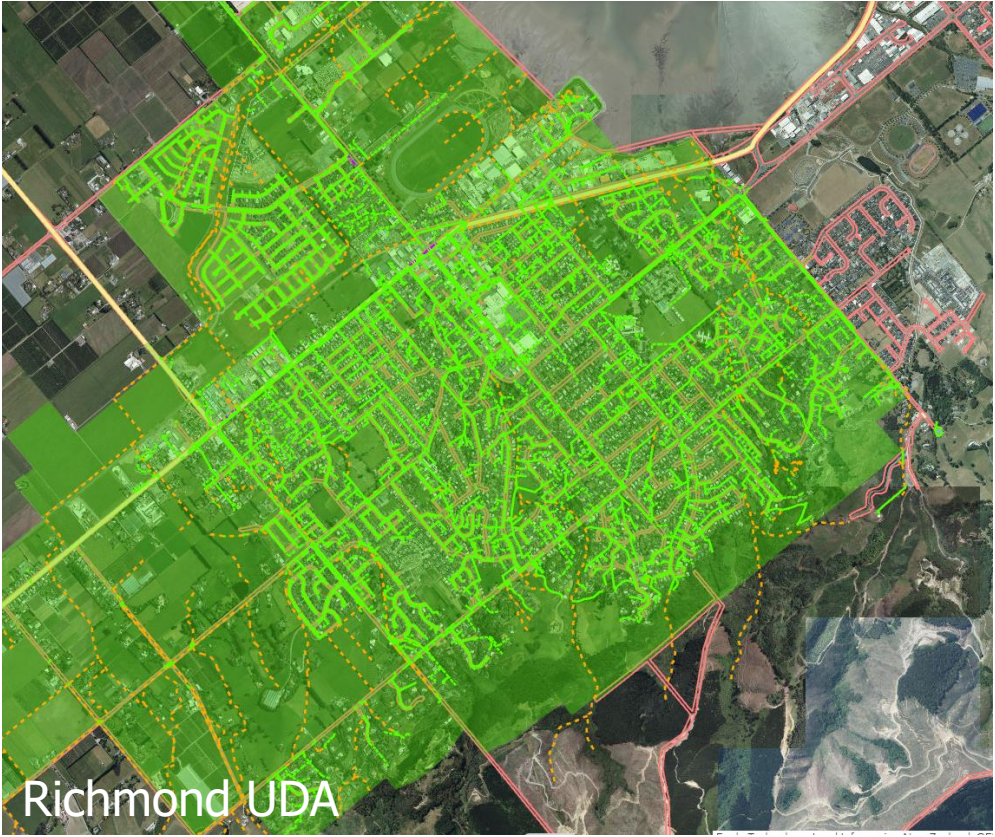


Urban Drainage Areas

Waimea Inlet	Tasman Bay	Golden Bay	Buller / West Coast
Richmond	Motueka	Takaka	Murchison
Wakefield	Tapawera	Pohara	St Arnaud
Brightwater	Mapua / Ruby Bay	Ligar Bay/ Tata Beach	
	Kaiteriteri	Patons Rock	
	Tasman	Collingwood	

Urban Drainage Areas

Urban coastal towns with significant greenfield and infill development pressures



Urban Drainage Areas

Inland towns and villages that have close interactions with major rivers



Motukea (Tovemotukea)



Motueka River (Stuff, 2021)

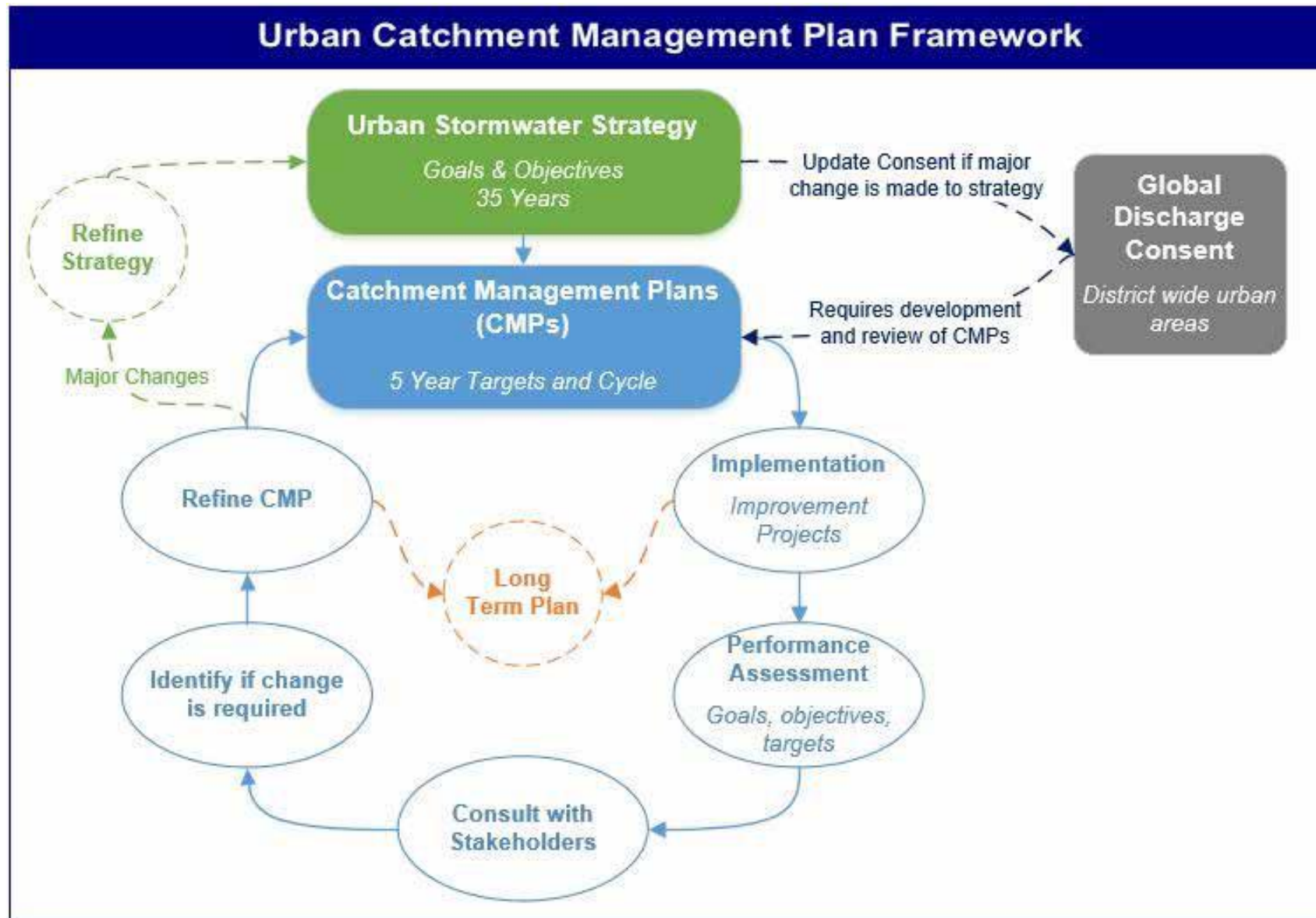
Urban Drainage Areas

Coastal villages with significant tourist and seasonal visitor needs



How We've Been Changing

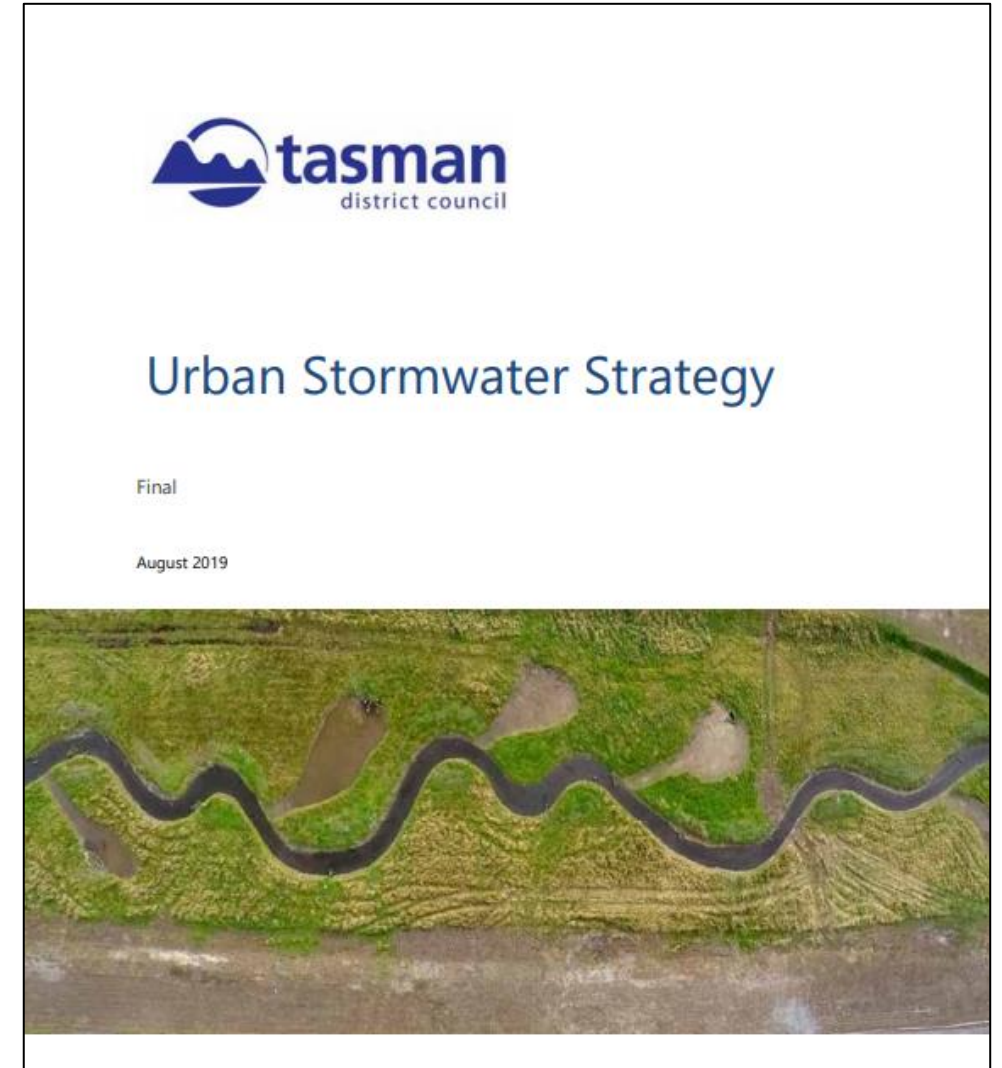
Catchment Management Framework



Urban Stormwater Strategy

Our vision for stormwater management is to protect and enhance the mauri of wai / life force of water and to provide for:

- Te Hauora o te Wai – the health of the water
- Te Hauora o te Taiao – the health of the environment
- Te Hauora o Ngā Tangata – the health of the people.



Urban Stormwater Strategy



Strategy also outlines long-term aspirations for stormwater management in Tasman District:

1. Our urban streams, aquatic habitats and coastal marine environment are healthy and accessible
2. Stormwater discharges do not degrade water quality and the ecosystem health of our streams and estuaries
3. Stormwater flooding does not create a hazard to our community or cause damage to properties
4. We enable water-sensitive growth for future generations
5. We manage stormwater in a holistic, efficient and cost-effective manner

Urban Stormwater Strategy

Aspiration 1: Our urban streams, aquatic habitats and coastal marine environment are healthy and accessible


Urban streams provide opportunities for ecological corridors, public access, amenity and connectivity for walking and cycling. A positive inclusion of streams in the urban landscape will render multiple benefits, not only in relation to stormwater management. Water Sensitive Design (WSD) includes components that look to protect and improve stream health through all phases of the design process.

Objectives:

- 1.1 Enhance habitat diversity and stream health, including riparian and wetland vegetation, diversity of bed/bank substrate (including woody debris), meander, diversity of width/depth, floodplain connectivity and diversity of bank shape suitable for aquatic and riparian fauna needs
- 1.2 Minimise stream modification and loss of natural streams (including springs and seeps).
- 1.3 Maintain and restore fish passage at man-made instream structures.
- 1.4 Provide for public access, amenity and connectivity along our urban stream network, creating green linkages connecting our hill country to the sea
- 1.5 Protect and restore specific areas of cultural and community significance within the stream corridors.

Global Stormwater Discharge Consent

- Catchment approach is supported by a global stormwater discharge consent for Tasman's 15 stormwater UDAs, granted in 2021
- The consent requires TDC to:
 - complete a CMP for each of the District's 15 UDAs, with milestone dates set out for each CMP...review every 6 years
 - develop a monitoring plan to track progress against our aspirations and actions outlined in the CMPs
 - Implement monitoring plan to include stormwater-focused environmental sampling



tasman district council | Te Kaunihera o te tai o Aorere

RESOURCE CONSENT

Replaces version issued 26 May 2021 – section 133A corrections

Resource consent number RM191019

Under sections 104 and 104B of the Resource Management Act 1991 (the Act), the Tasman District Council (the Council) as consent authority hereby grants resource consent to:

Tasman District Council
(the Consent Holder)

Activity authorised by this consent

Combined discharge permit and coastal permit to discharge stormwater, including associated contaminants, from public urban stormwater network infrastructure to land, coastal water and fresh water.

Location details

The Tasman District's fifteen townships serviced by urban stormwater networks, including stormwater discharge structures located below mean high water springs. These fifteen Urban Development Areas are:

Brightwater	Collingwood	Kaiteriteri
Ligar Bay / Tata Beach	Māpua / Ruby Bay	Motueka
Murchison	Patons Rock	Pōhara
Richmond	St Arnaud	Tākaka
Tapawera	Tasman	Wakefield

Both the existing Urban Development Areas, and future extensions needed to service the urban growth of these townships are included.

Under sections 108 and 108AA of the Act, this resource consent is issued subject to the following conditions:

CONDITIONS

General

Catchment Management Plans CMP

Motueka Town Catchment Management Plan

Adopted 30 June 2022



1. Nau Mai Haere Mai

2. Te Mana o te Wai

3. Catchment Overview

4. Stream Health & Aquatic Habitat

5. Contamination Risks

6. Flooding



6.1 Aspirations

6.2 Key Issues

6.3 Improvement Actions

Aspiration 3:

Stormwater flooding does not create a hazard to our community or cause damage to properties

We will measure our progress against the following objectives to determine how we are tracking towards our aspiration:

Reference	Description
-----------	-------------



Some Insights and Lessons

Insight 1 – Have a good Strategy

“A strategy a day keeps the planning scope creep and poor capex/opex spending away”

-Traditional English proverb (paraphrased)

Good = enforceable!

Holistic Stormwater?

- We organise our business along boundaries that don't exist in nature
- Stormwater involves many diverse Council activities

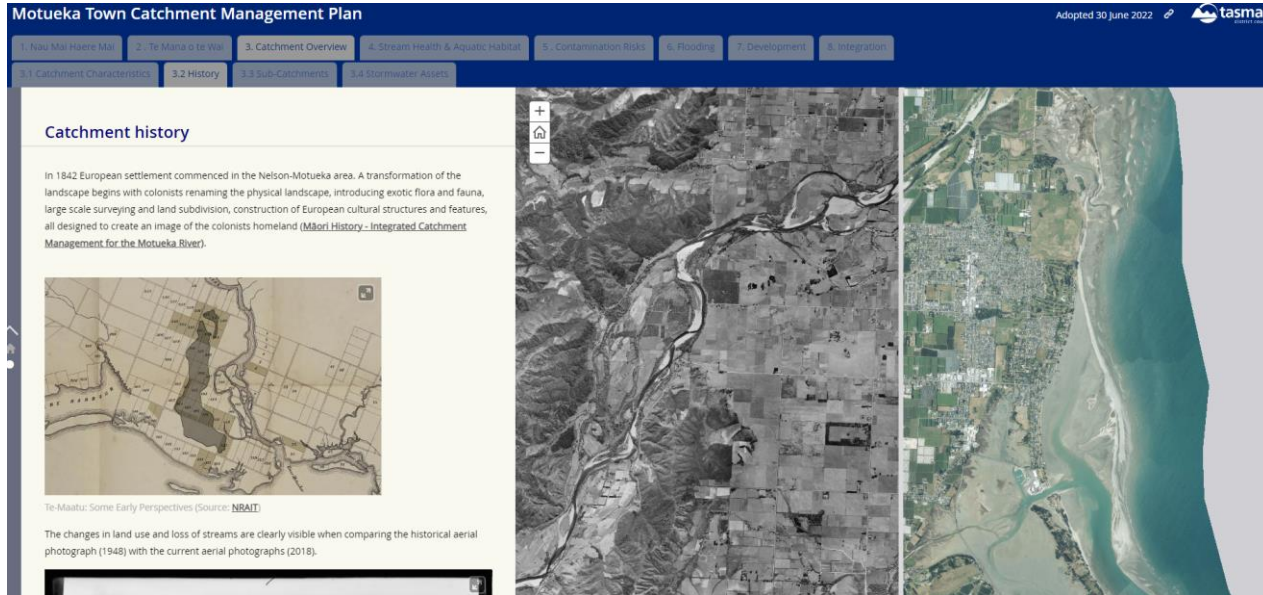
Insight 2 – Use the difficulties of the CMP as an opportunity



Motueka (NelsonTasman.co.nz)

“In the middle of difficulty lies opportunity”
-Albert Einstein

Insight 3 – Be (somewhat) flexible with engagement



“Be flexible but stick to your principles”

-Eleanor Roosevelt

but

“We’re here for a good time, not a long time...”

-Trooper



What About Water Reform?

A disclaimer

“The only true wisdom is in knowing you know nothing.”

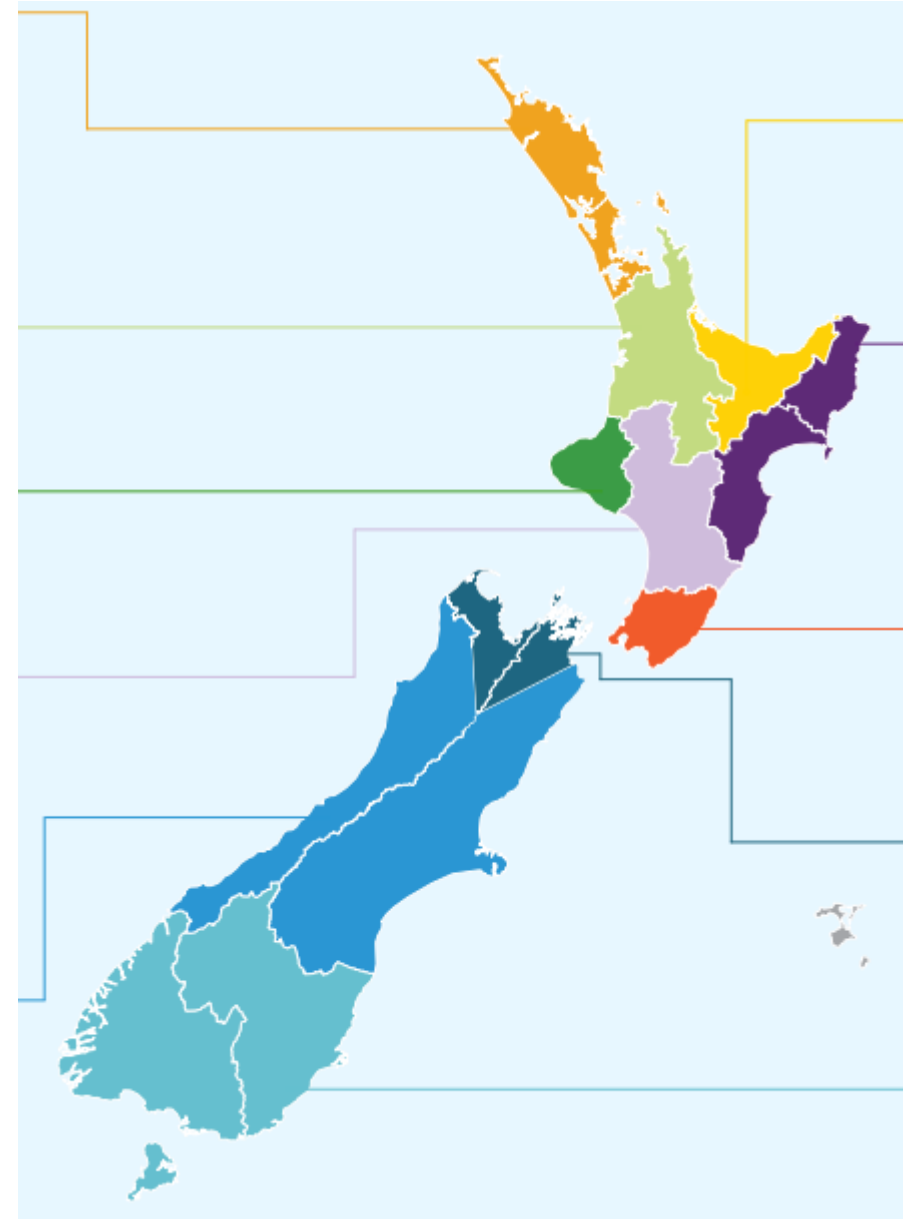
-Socrates



Thanks HBO!

What do we know?

- Stormwater Management Plans
- Mix of Entity, private, transportation authority, and District/Regional Council assets and jurisdictions
 - No “river” flooding
 - No coastal flooding
- Relationship agreements
- Existing consents will transfer to the Entity
- Entities will have some sort of regulatory powers



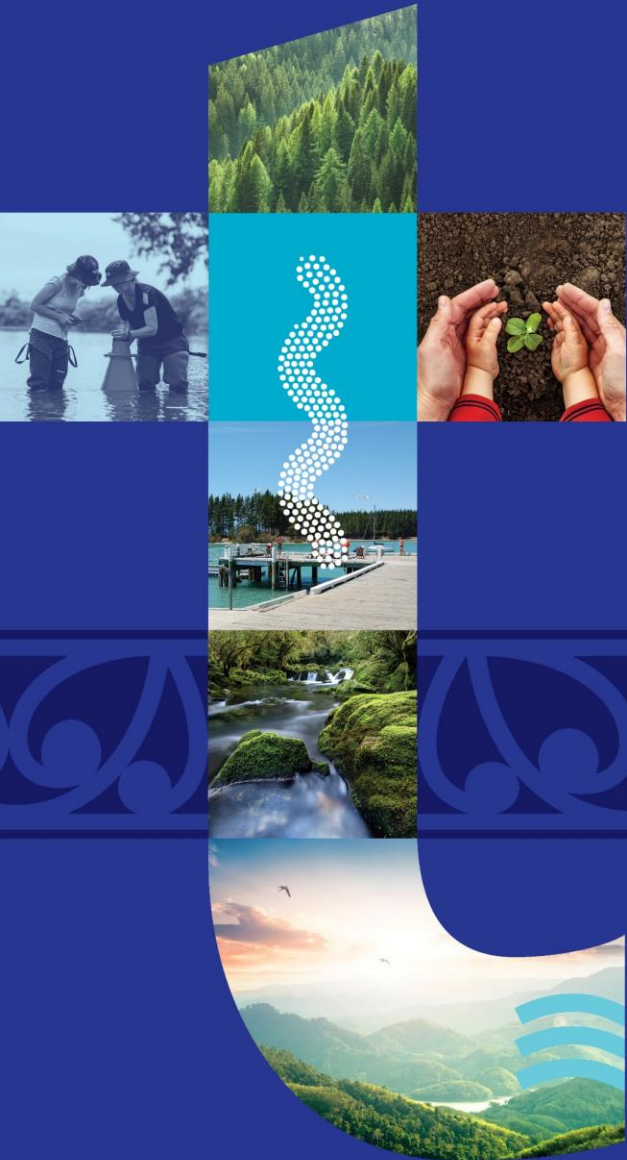
How will this affect Tasman's strategy?

“Meet the new boss
Same as the old boss”

-The Who

Summary

- Accepted fact: Stormwater/Catchment Management Plans need to be holistic
- That's hard to do
- Plans should be enforceable
- Use the process to develop strong relationships with partners
- Not going to get easier...but probably also not harder, so don't wait!



Thank You!

Thriving and resilient Tasman communities

 **tasman** | Te Kaunihera o
district council | **te tai o Aorere**

 **Tonkin+Taylor**