



Politics, the Pond and the Park – the stormwater journey of Te Pā Harakeke

Water New Zealand Stormwater Conference – May 2023



Modellers' Pond

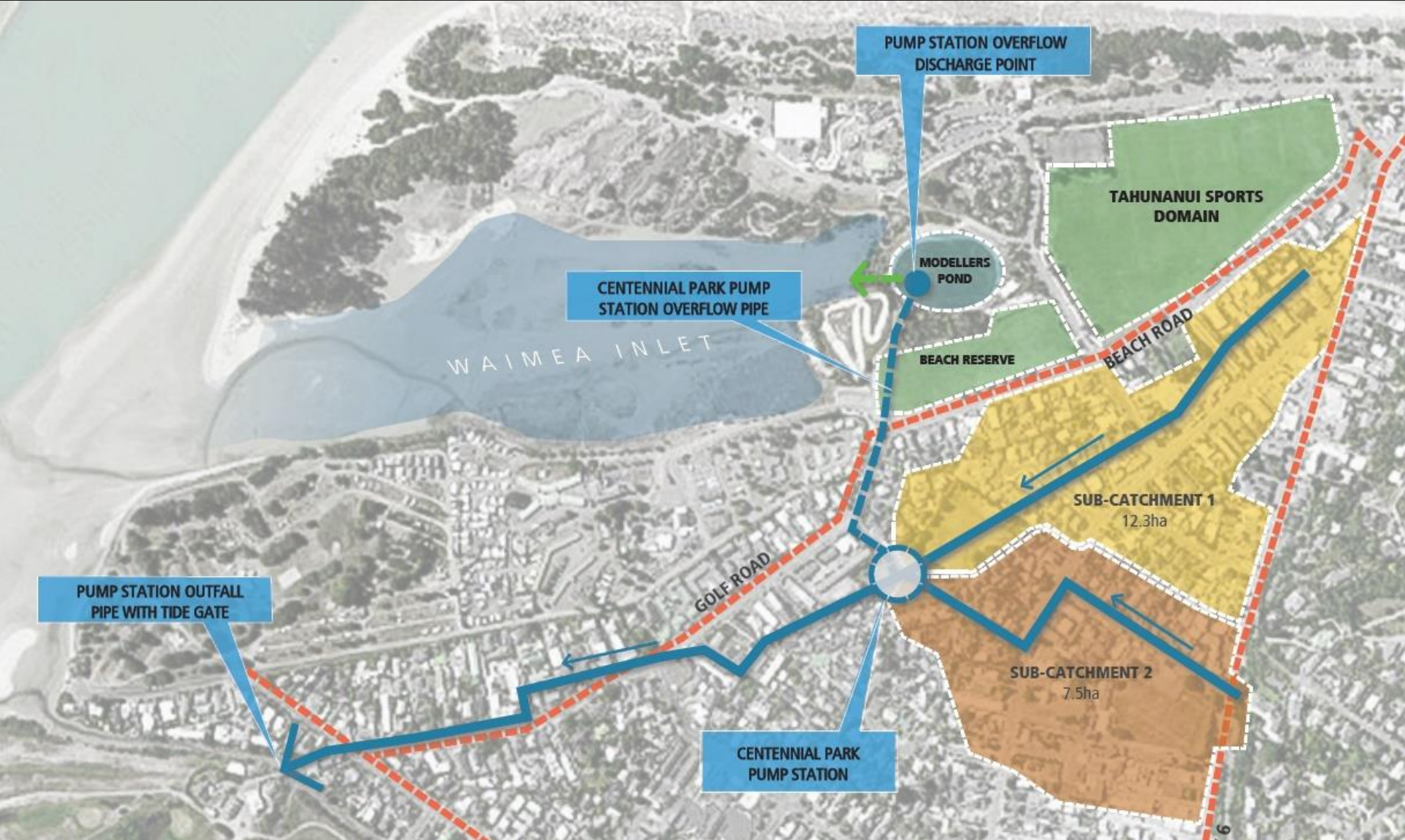
Location and history

Nelson Society of Modellers

Surrounding recreational assets



Centennial Park Stormwater Pump Station



The problem – politics and the pond

Algae and weeds

Clean up attempts

Trials and options

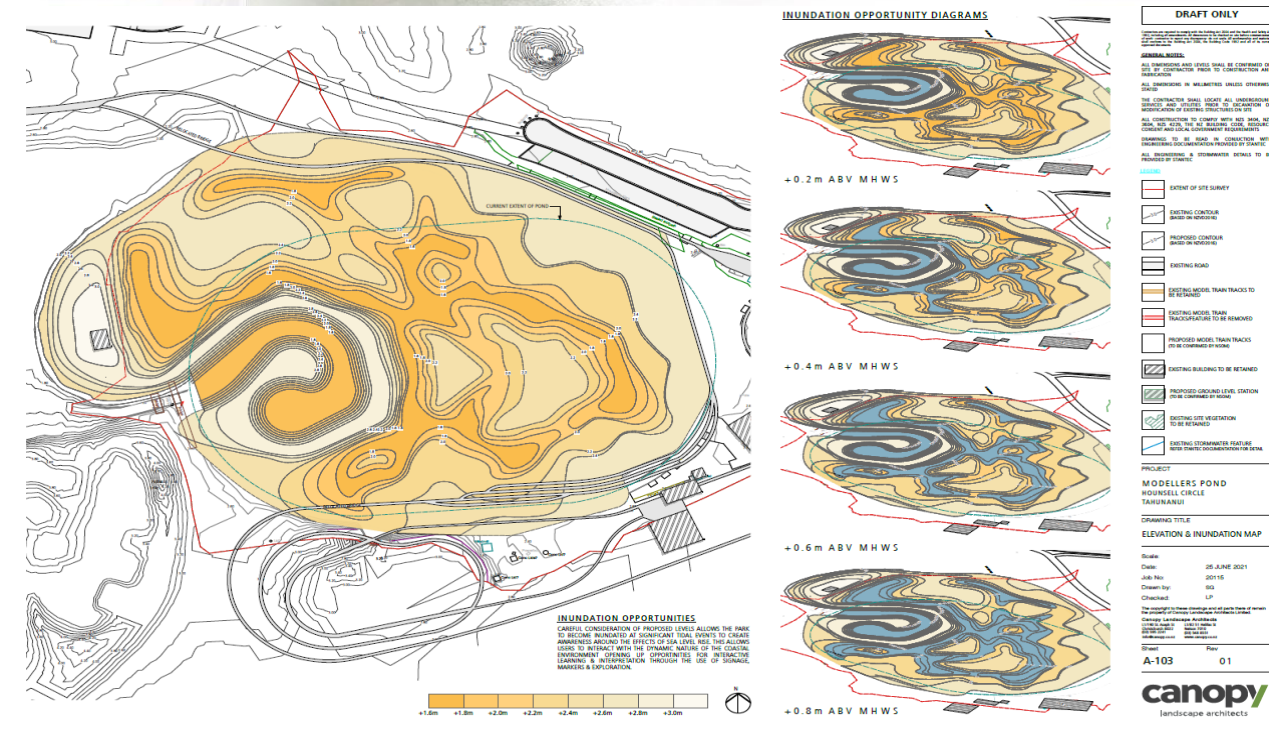


More politics, but a new solution - a park?

An alternative option

Vision for the new park

Tidal inundation, climate change, coastal erosion

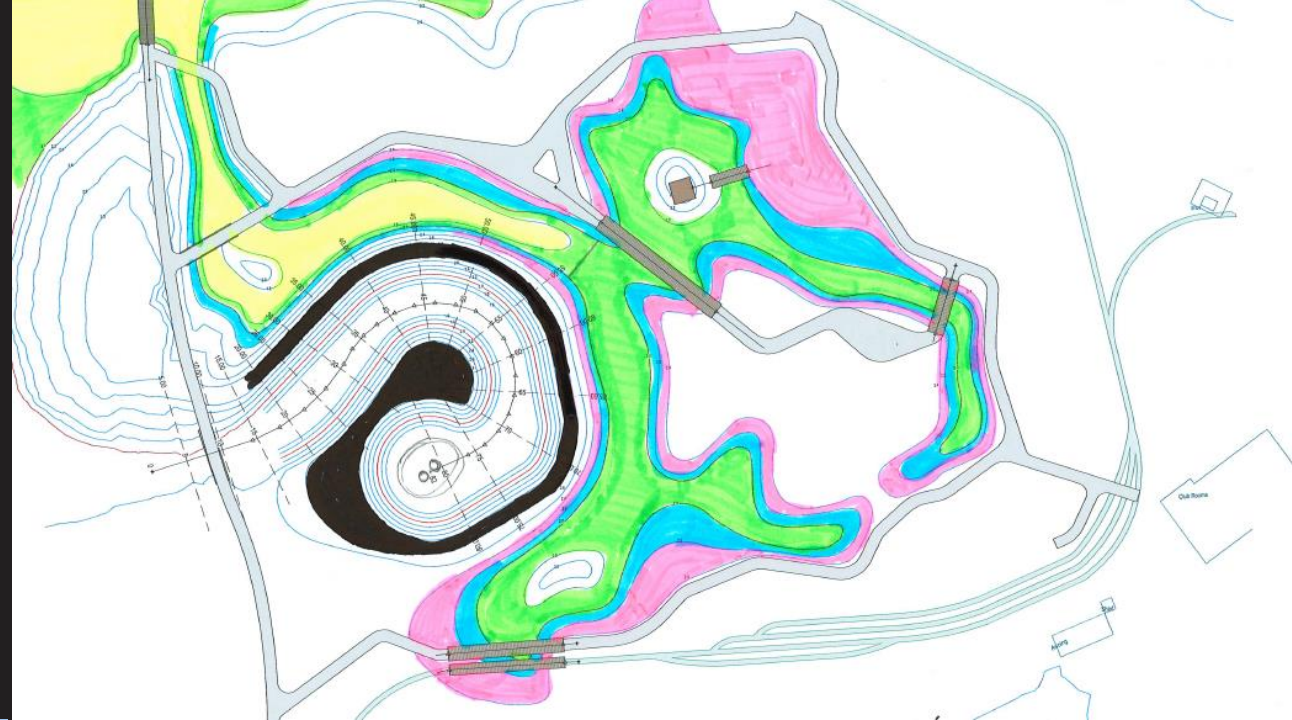


Design - New reserve/stormwater swale

Tidal assessment

Pond sludge analysis

Sludge management options



Design - New reserve/stormwater swale

Retaining the pump station discharge structure

A new contained discharge swale

Widening the outlet to the estuary



Design - Centennial Park pump station

Stormwater treatment

Downstream Defender arrangement and location

Other pump station modifications

Components

1. Inlet to Precast Vortex Chamber
2. Inline Screen
3. Bypass Screen
4. Outlet Pipe
5. Sediment Storage Sump
6. Access Lid

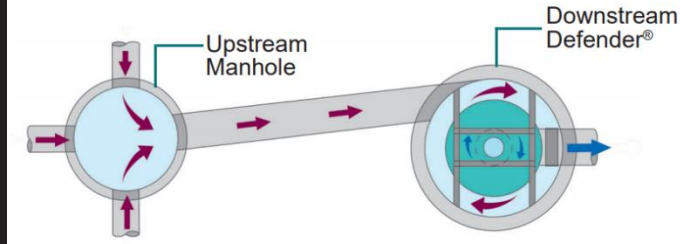
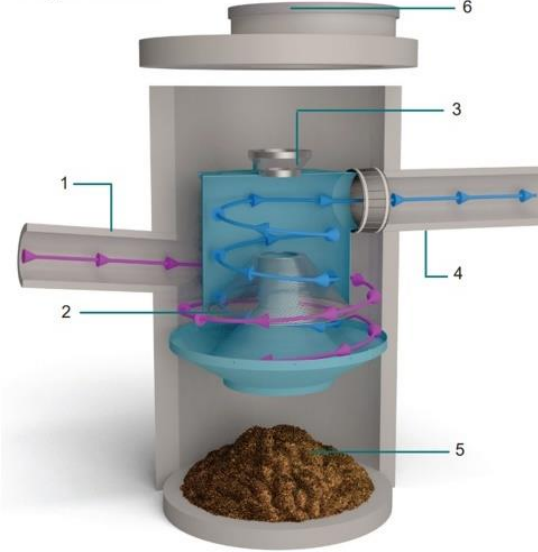


Fig.3a The Downstream Defender® in an online configuration.

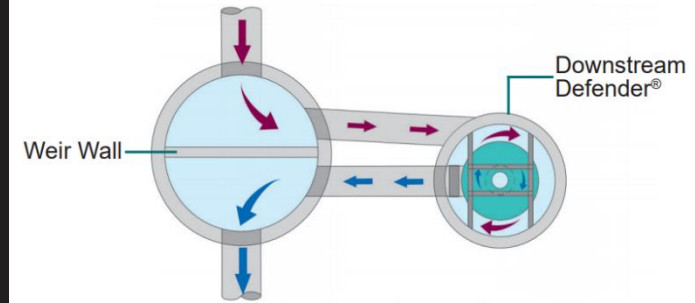
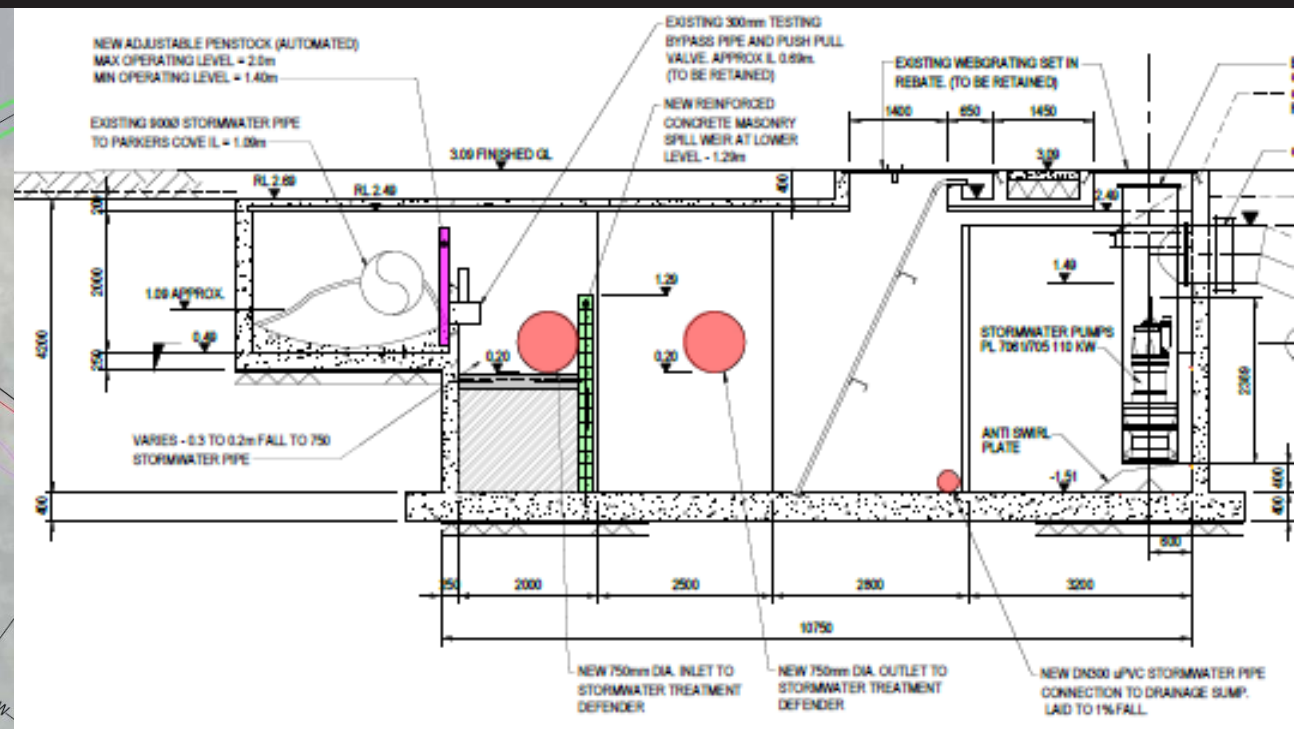
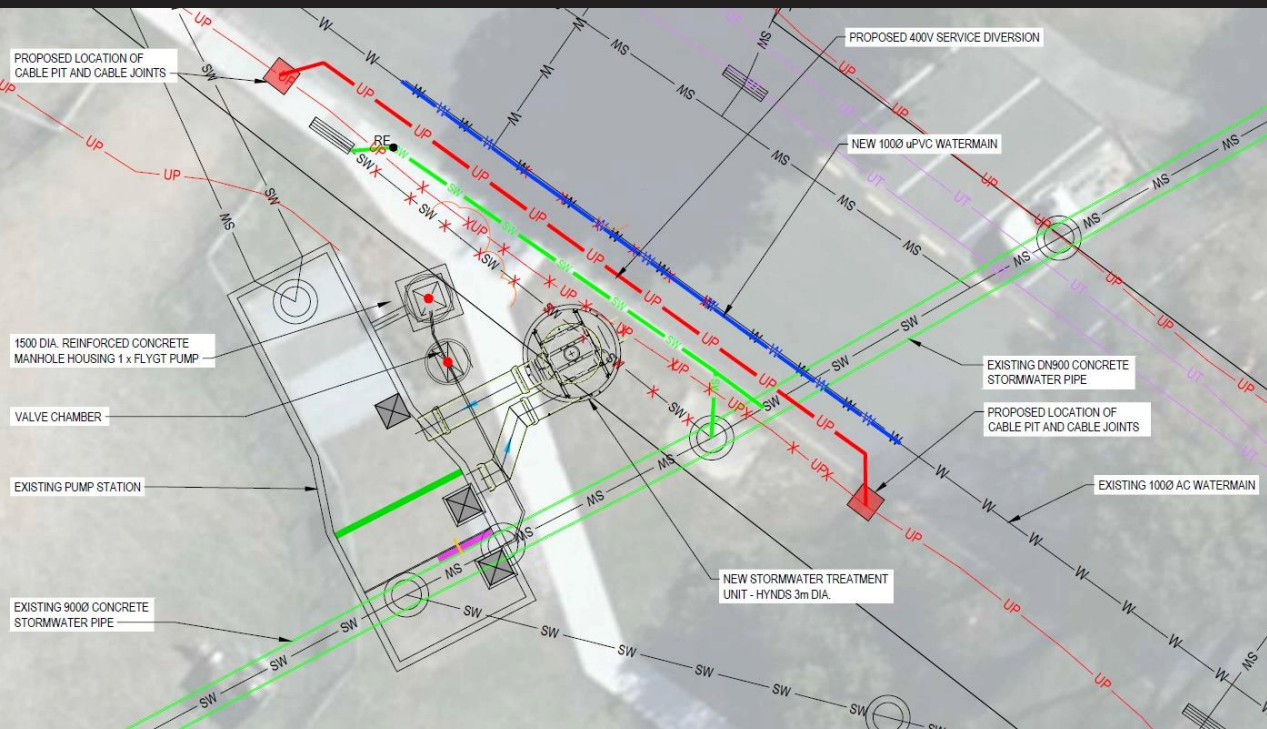


Fig.3b The Downstream Defender® in an offline configuration.



Construction – New reserve/stormwater swale

Draining the pond

Managing pond sediment

Earthworks and local drainage



Construction – Centennial Park pump station

Structural modifications

Dealing with live flows

Managing HAIL material



Construction – New reserve

Park furniture

Sustainable outcomes

Cost savings



Te Pā Harakeke

Gifting of the name

Blessing ceremony

Public opening



Stuff NICK SMITH — NELSON MAYOR



Sharing some lessons learnt

Understanding your project objectives

Knowing your assets

Past decisions can come back to haunt

Working closely with iwi for more natural and sustainable outcomes

What lies beneath: The problem with the Modellers Pond

Hannah Bartlett · 09:00, Oct 13 2017



Noel Dyer is one of the Modellers Society members waiting on the council to find a solution to the pond's weed and algae problem.

Modellers Pond fix a million-dollar question

Hannah Bartlett · 11:54, Feb 22 2017



Debates over the waterway, in the beachfront suburb of Tahunanui, had ebbed and flowed, dividing city councillors and prompting many proposed solutions – all with big price tags.

Modellers Pond fix swamped with more than \$1.7m in costs

Hannah Bartlett · 08:04, Oct 04 2017



Model maker and Modellers Society member Noel Dyer said he can't use his boats at the weed-infested Tahunanui pond.

Nelson's modellers won't move and want \$2.37m concreting of pond to proceed

Skara Bohry · 05:00, Oct 04 2019



Nelson modellers discuss the state of the Modellers Pond in Tahunanui in March 2019. There has been little progress on a permanent solution to the algae problems.

Council staff 'obstructive' over Modellers Pond cleanup

Skara Bohry · 09:16, Dec 05 2018



Algal blooms have persisted in the modellers pond in Tahunanui since out-dated cleaning methods were abandoned in 2000.

Fix for Nelson's Modellers Pond increases to more than \$3m

Skara Bohry · 17:46, Dec 10 2019



JOE LLOYD/STAFF

Sharing some lessons learnt

Don't be afraid to try something new if the opportunities arise

The more you have to lose the more the project can gain

Stormwater infrastructure and public reserves can work together to provide something beautiful

Modellers Pond may finally be sunk as council backs park proposal

Skara Bohny · 09:17, Jun 19 2020



New name gifted for Nelson's Modellers Pond park

Skara Bohny · 11:24, Mar 04 2022



Modellers Pond alternative ready to go to 'detailed design' stage

Tim Howman · 16:00, Nov 03 2020



Modellers Pond redevelopment to get under way before Christmas

15:27, Nov 26 2021



Modellers Pond drained in preparation for new park

15:37, Feb 21 2022



Workers pump out water from Nelson's Modellers Pond to relocate them as the pond is drained.

Modellers Pond finally laid to rest with playground's opening

Frances Chin · 15:59, Nov 26 2022



Thruppeni Reserve's newest playground Te Pū Hara takes built on the site of the former Modellers Pond.

Thank you and any questions?



The old, polluted Modellers' Pond, and the new Te Pā Harakeke reserve (photo credit Rowan Findley)

Thanks to the Stantec project partners - Nelson City Council, Botha Miskell, Hynds, Taylors Contracting and Ching Contracting