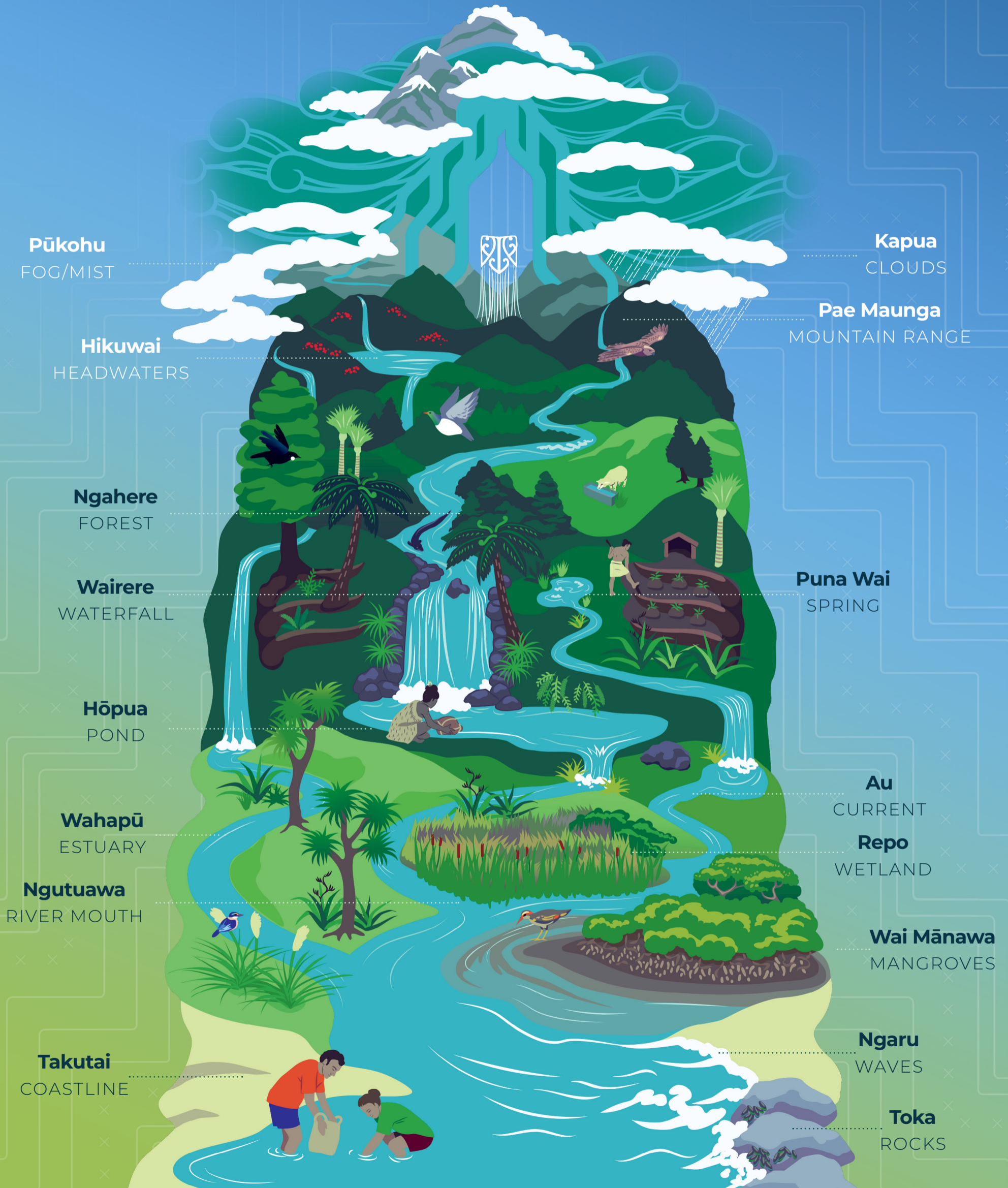


TE WAIORA

THE LIFE-GIVING WATERS

Waiora originates at the puna (the sources, or springs), of Ranginui and Papatūānuku and flow continuously within te hurihanga wai (the water cycle), carrying life-giving properties to the taiao (the environment), to the animals, and to the people within.

Ko te wai te ora o ngā mea katoa. Water is the life source of all things.



TE WIKI O TE REO MĀORI

Māori Language Week
11-18 MAHURU 2023

