

# Rain Cloud to Receiving Water

The road to high value digital twins

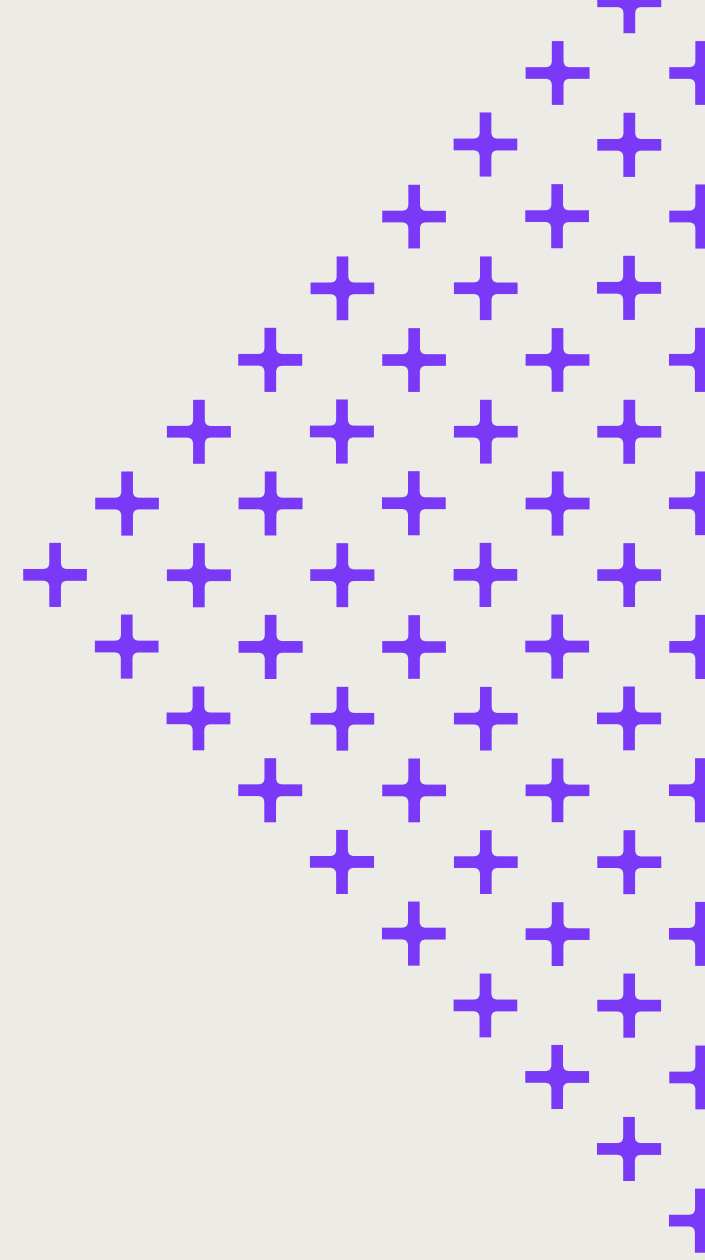


The background features a top-down view of a stone well with a circular opening. A large, semi-transparent purple rectangle is overlaid on the left and center of the image. A faint, light-colored compass rose watermark is visible behind the purple rectangle. The text is centered within the purple area.

**What if we could  
optimise interventions  
around strategic  
outcomes ?**

# Smarter Infrastructure

Smart Infrastructure enhances the physical world with digital insights. It improves efficiency, helps you make **better decisions** and pinpoints errors before they happen. It's always on and always learning. The more data it receives, the more opportunity it reveals.

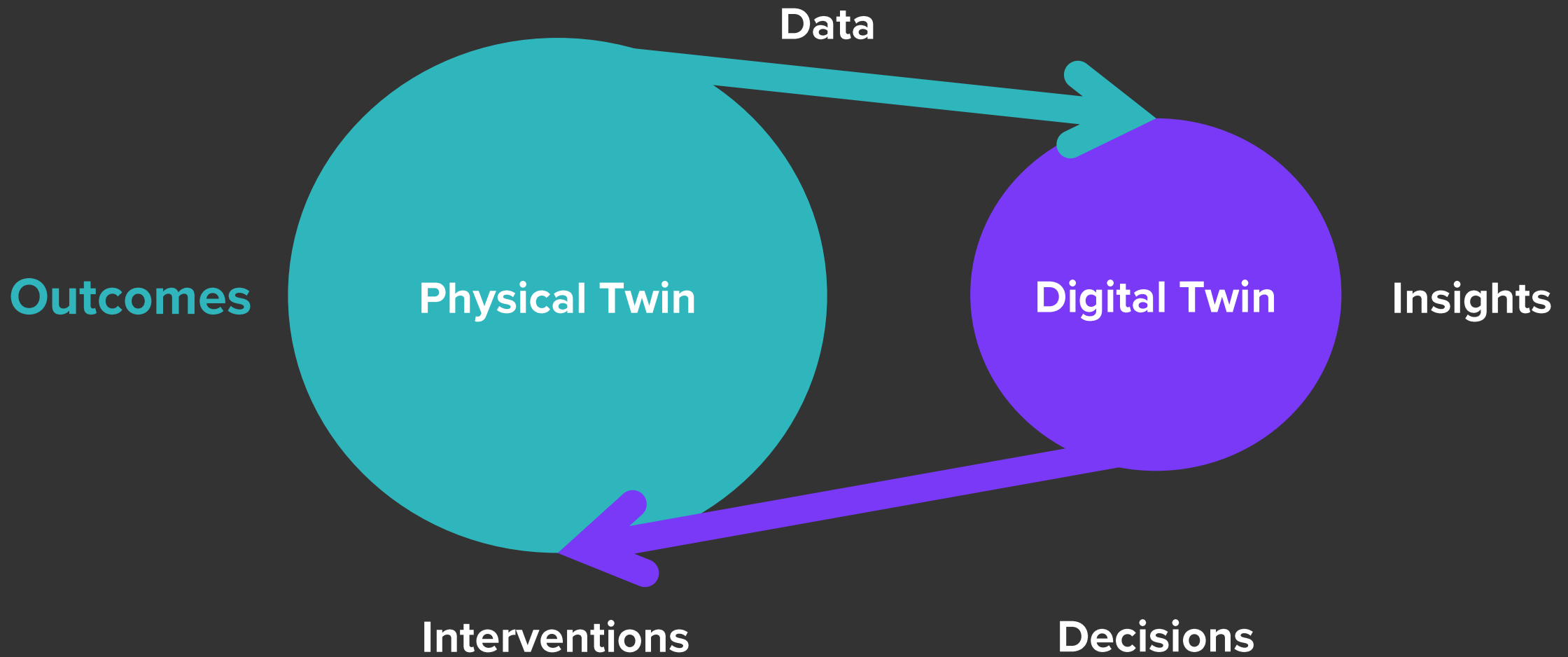


The key to  
**smarter** assets is a  
connected digital  
representation –  
**digital twin**

An aerial photograph of a city grid, showing a dense pattern of buildings and streets. The image is overlaid with a dark blue, semi-transparent filter. The text is centered on the left side of the image.

The **twin** starts  
with the  
existing system  
and **evolves**

# Digital Twin Topology



**We need to focus  
on our culture,  
domain and digital  
knowledge**

# 3 Pillars of Delivery





# Digital Transformation Task Group



SMART  
INFRASTRUCTURE



*“To facilitate and accelerate digital transformation in the UK’s infrastructure industry, in order to increase performance and national productivity.”*



# Smart Infrastructure Index©

Online self-**assessment** tool to understand digital maturity

Developed specifically for infrastructure

Covers broad range of topics:

- Customers
- Commercial
- Digital transformation
- Asset management
- Asset delivery
- Asset performance
- Continuous improvement

## Smart Infrastructure Index©

**In only 15 minutes, you'll be able to:**

- ✓ See where your company sits on the Smart Infrastructure Index
- ✓ Benchmark your performance against others within and outside your sector
- ✓ Understand your capabilities and areas to improve on

[Start SI Index](#)

[index.smartinfrastructure.com](https://index.smartinfrastructure.com)

# 70%

believe they don't understand their digital skills gap

# 95%

said poorly organised information prevents them from realising its full value

# 74%

think there are significant omissions, duplicates or inconsistencies in their asset register

# 60%

feel decisions are made on the basis of experience and instinct rather than being informed by evidence

# Common challenges, shared response

The Smart Infrastructure Index<sup>®</sup> Report 2019

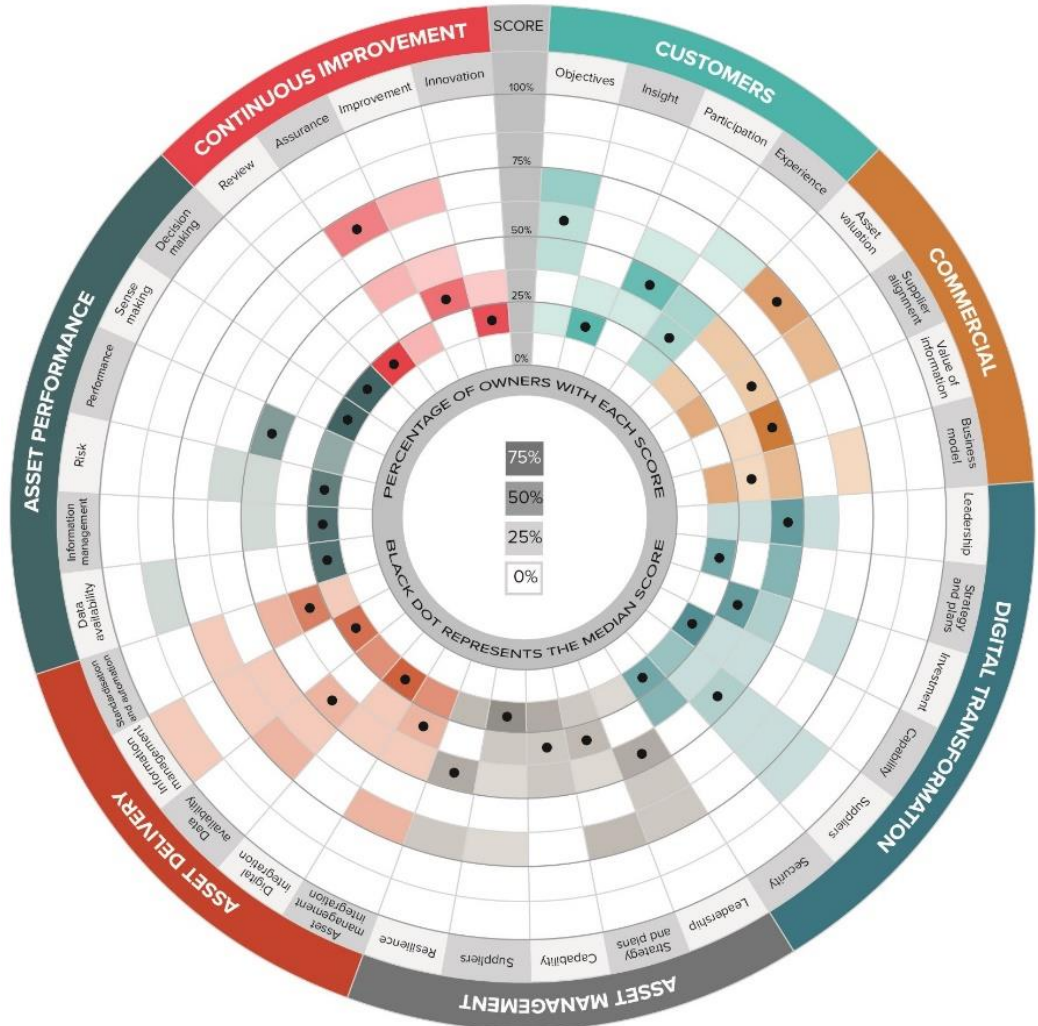
<https://project13.mottmac.com/2019/>

Read full report

Get in touch:  
Jamie.Radford@mottmac.com  
@RadfordJT



SMART INFRASTRUCTURE



# Some actionable steps...

1.

---

## Benchmark Maturity

Complete the Smart Infrastructure Index© to benchmark your performance against the ICG and others globally.

2.

---

## Shape your strategy

Drive coordinated action with an overarching digital transformation strategy to focus investment and maximise value.

3.

---

## Help create best practice

Share and collaborate globally as an industry to ensure we avoid the classic pitfalls of every major IT project! (Which this isn't).

# 3 Pillars of Delivery



Culture

Domain

Digital

# Looking for a new way of thinking

Static reporting



Live analytics

Isolated data



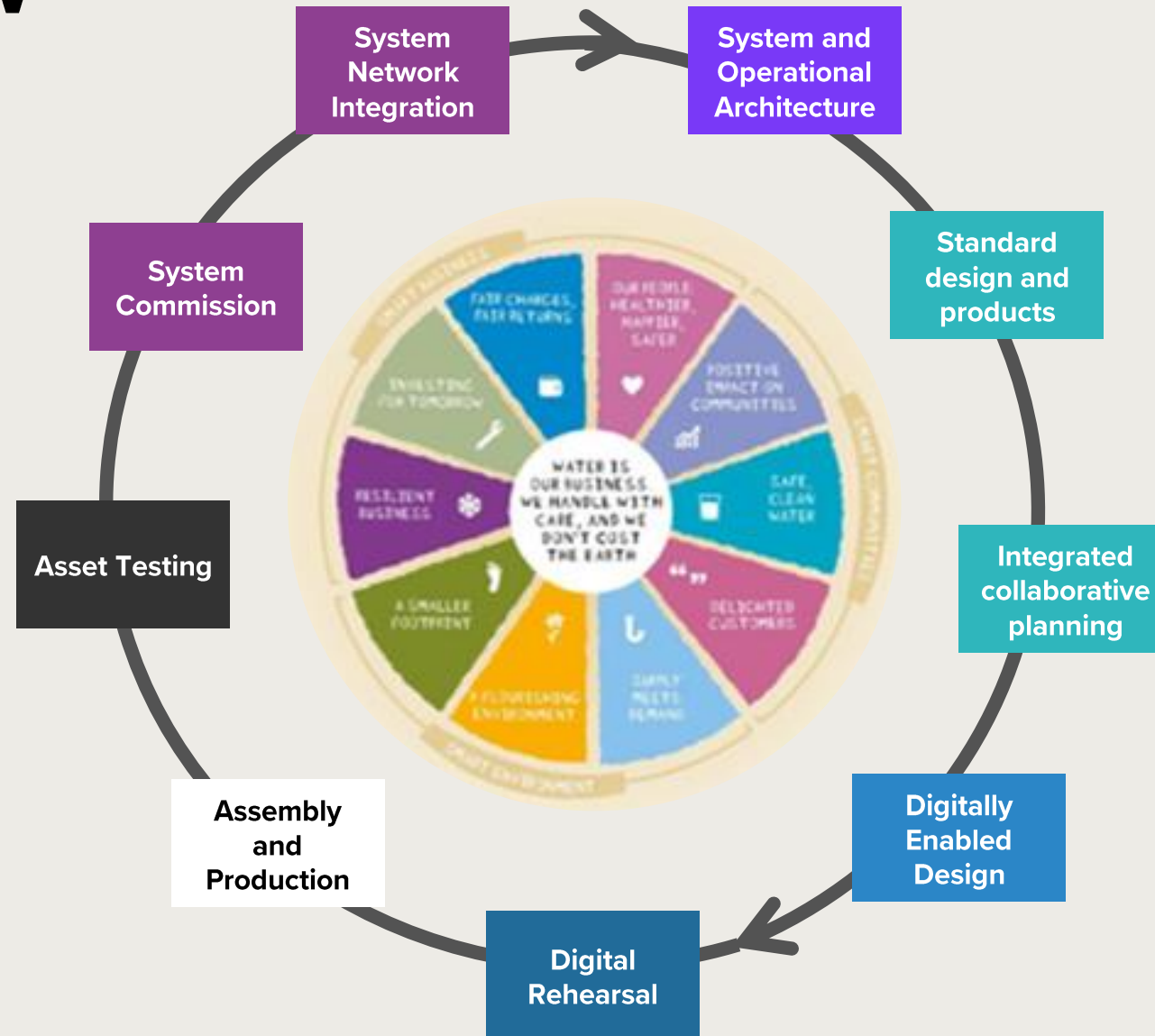
Interconnected data

Separate build &  
maintenance cost



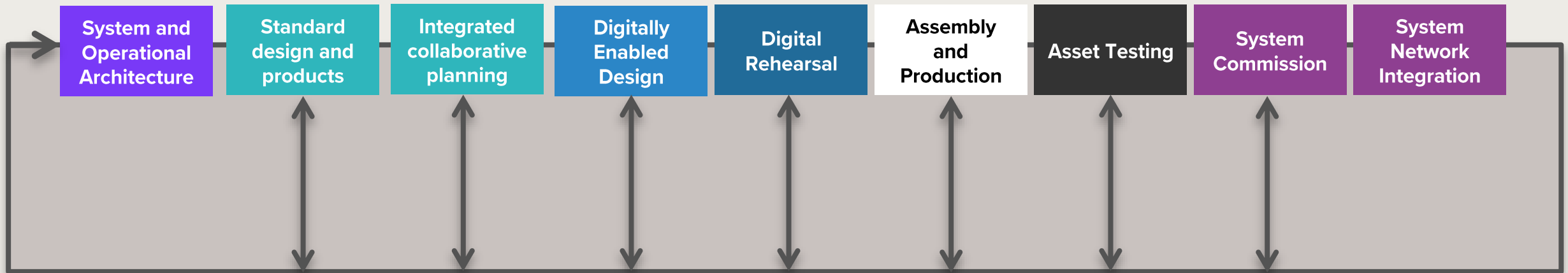
Outcome per whole  
life \$

# Project Flow





# Continuous evolution



# Federation drives collaboration and evolution



# 3 Pillars of Delivery

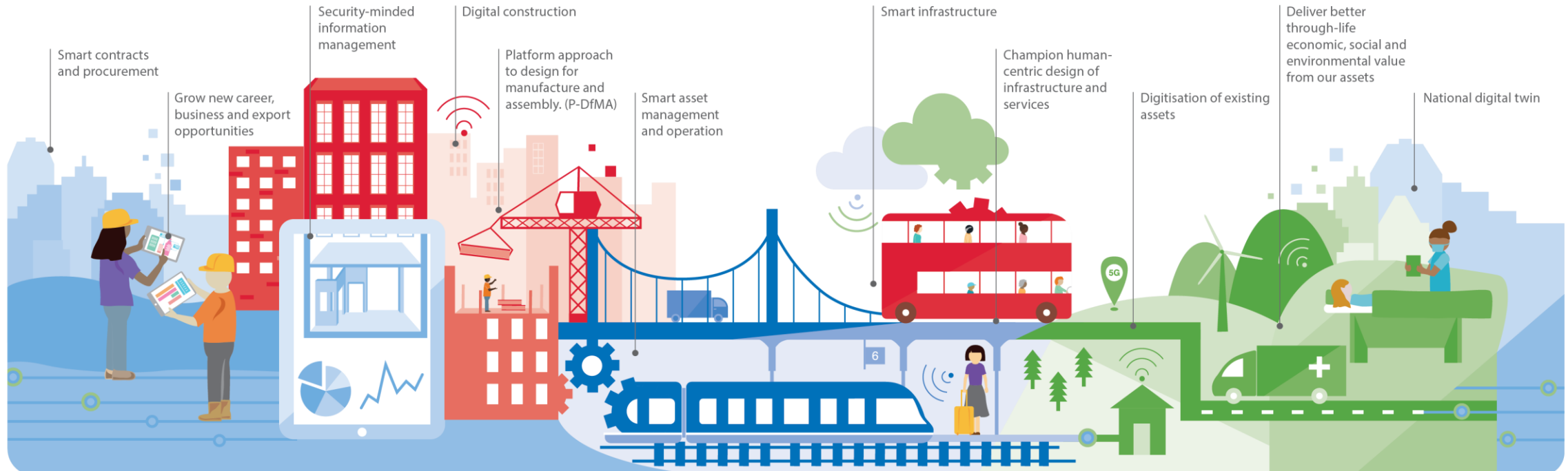


Culture

Domain

Digital

# This is Digital Built Britain



## Design

Use best practice, secure by default, information management and digital techniques to get data right from the start and design better-performing homes, buildings and infrastructure.

## Build

Exploit new and emerging digital construction, information management, and manufacturing technologies and techniques to improve safety, quality and productivity during construction.

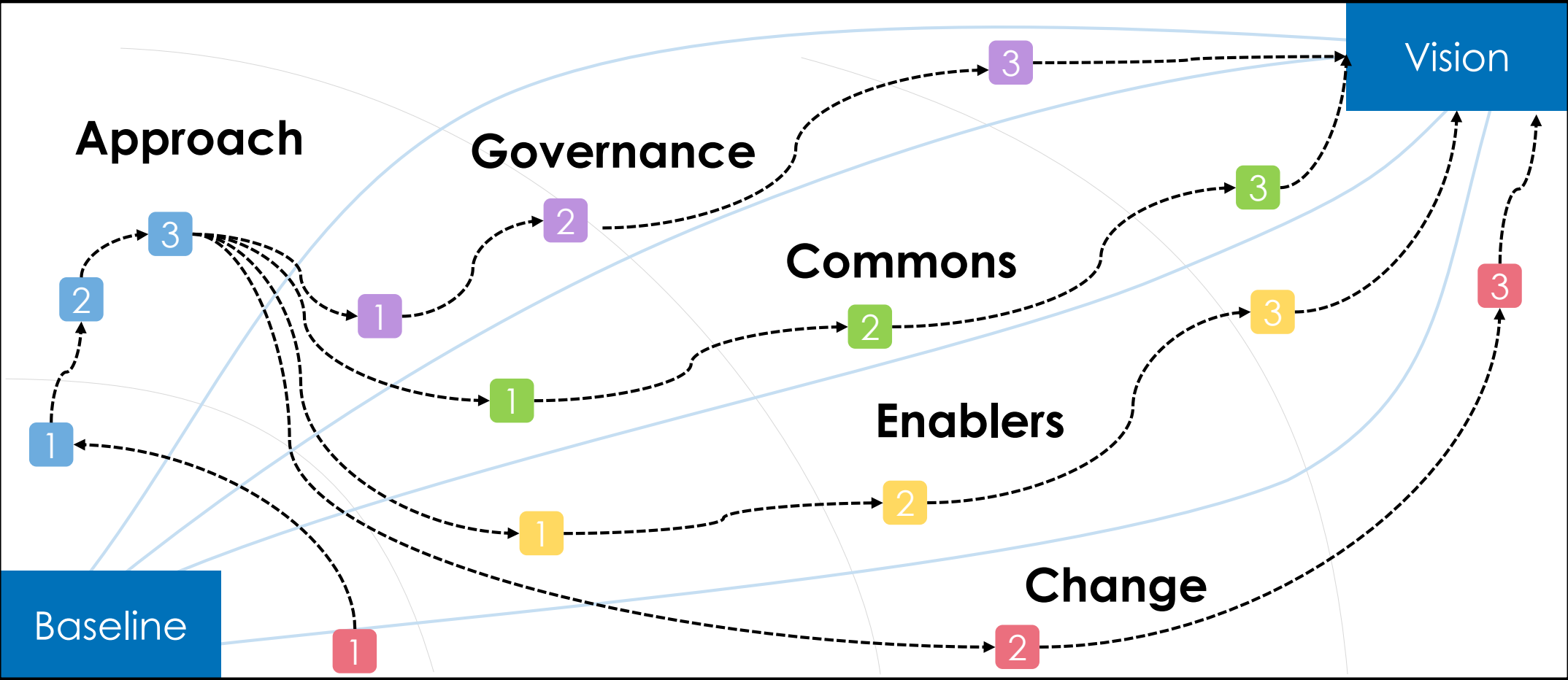
## Operate

Use effective information management to transform the performance of the built environment and the services it delivers.

## Integrate

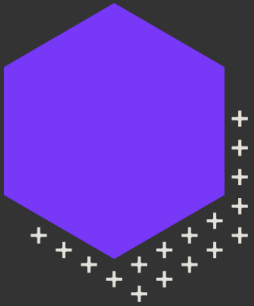
Understand how the built environment can improve citizens' quality of life and use that information to drive the design and build of our economic and social infrastructure and the operation and integration of the services they deliver.

# The Roadmap



**Having principles is  
foundational**

# The Gemini Principles



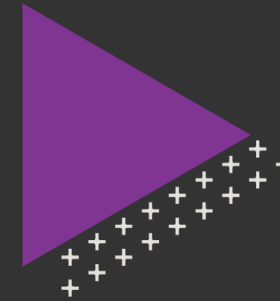
## Purpose

Must deliver determinable insight to create value for the public good and enhance social, environmental, and economic outcomes



## Trust

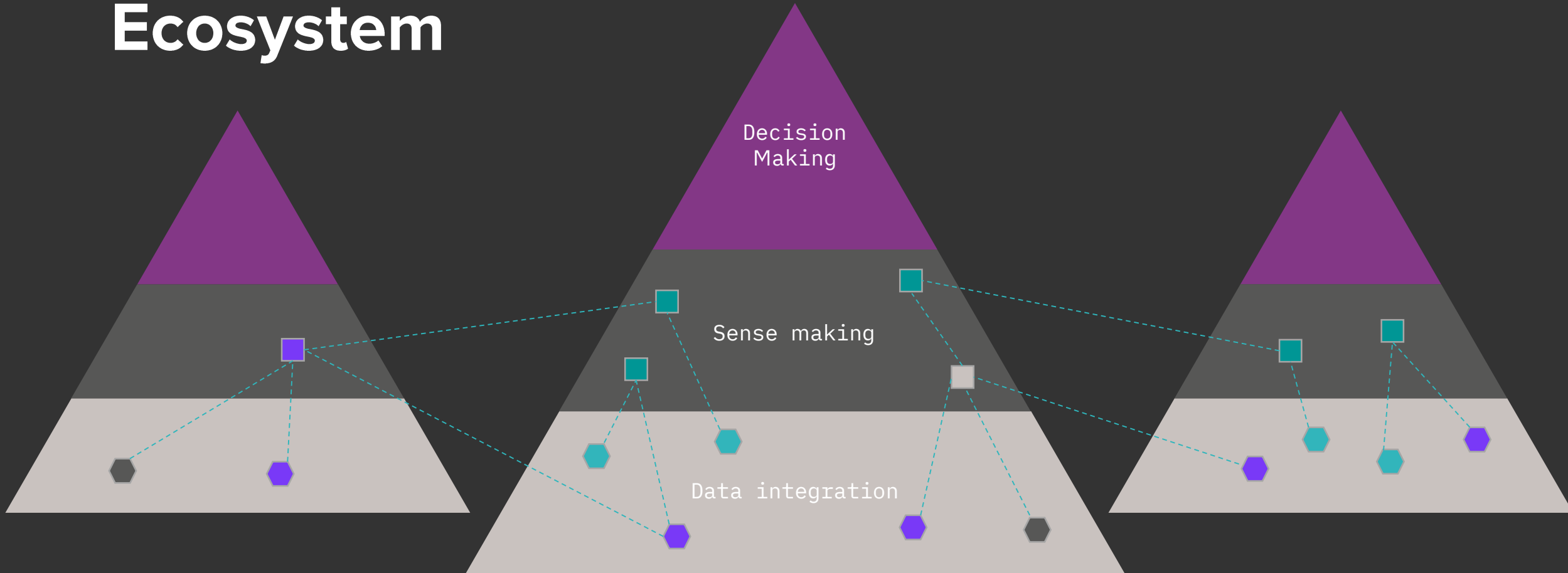
Must deliver quality data in an open and secure way



## Function

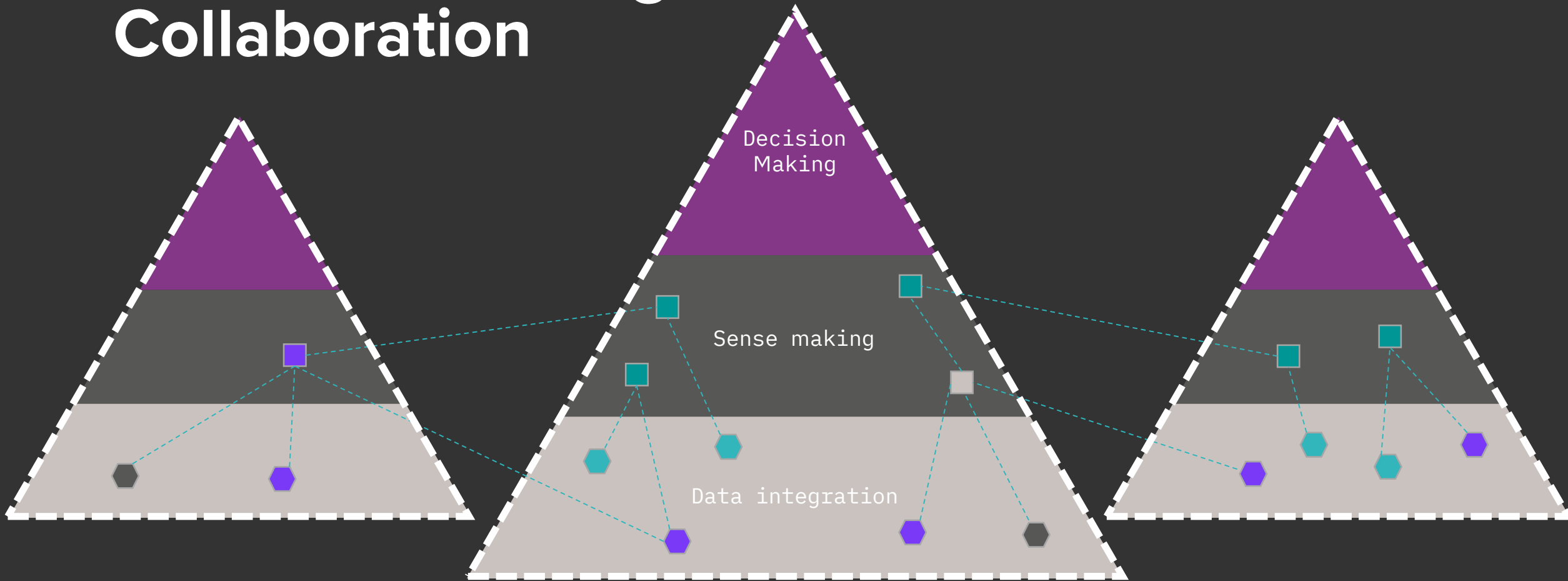
Must evolve with technology and through the asset lifecycle. Federation and collaboration is the key to evolution.


# Federated Ecosystem





# Trust – Protecting Collaboration





**We're already building  
digital twins which  
deliver high value  
outcomes right here in  
New Zealand**

A couple is seen from behind, looking out over the Auckland skyline at sunset. The city's buildings are silhouetted against a bright, golden sky. The water of the harbor is visible in the middle ground, with a few boats. The overall mood is serene and contemplative.

# Creating the world's most liveable city.

Auckland wants to be the world's most liveable city, but unpredictable wastewater overflows are polluting its beaches. Swimmers don't know where it's clean and safe to go into the sea.

We used Moata to see the unseen.

NWP (global)

Rain radar (local)

Water temp

Flow sensors

Tides/swell


Collaborating with local partners, we pinpointed **10 invaluable data streams** to measure the performance of Auckland's wastewater infrastructure.

Water quality


CSOs

GIS

Rain sensors

An aerial photograph of a city harbor, likely Auckland, New Zealand, showing a large body of water, a bridge, and a dense urban area with many buildings. The image is overlaid with numerous semi-transparent white circles, each containing a small white dot, representing data points. The text is overlaid on the lower-left portion of the image.

These created one billion  
**data points** which are  
analysed every single day.



## Allowing us to predict the water quality at 84 different beaches.

We present this information back to the public in real-time. Now we help 350,000 people know when it's safe to swim, and Auckland gets a step closer to becoming the world's most liveable city.



# Welcome to Safeswim

## Nau mai ki Safeswim

Check Safeswim for live information on water quality and swimming conditions at your favourite swimming spots

### Find a beach – Kitea he taone

Search 

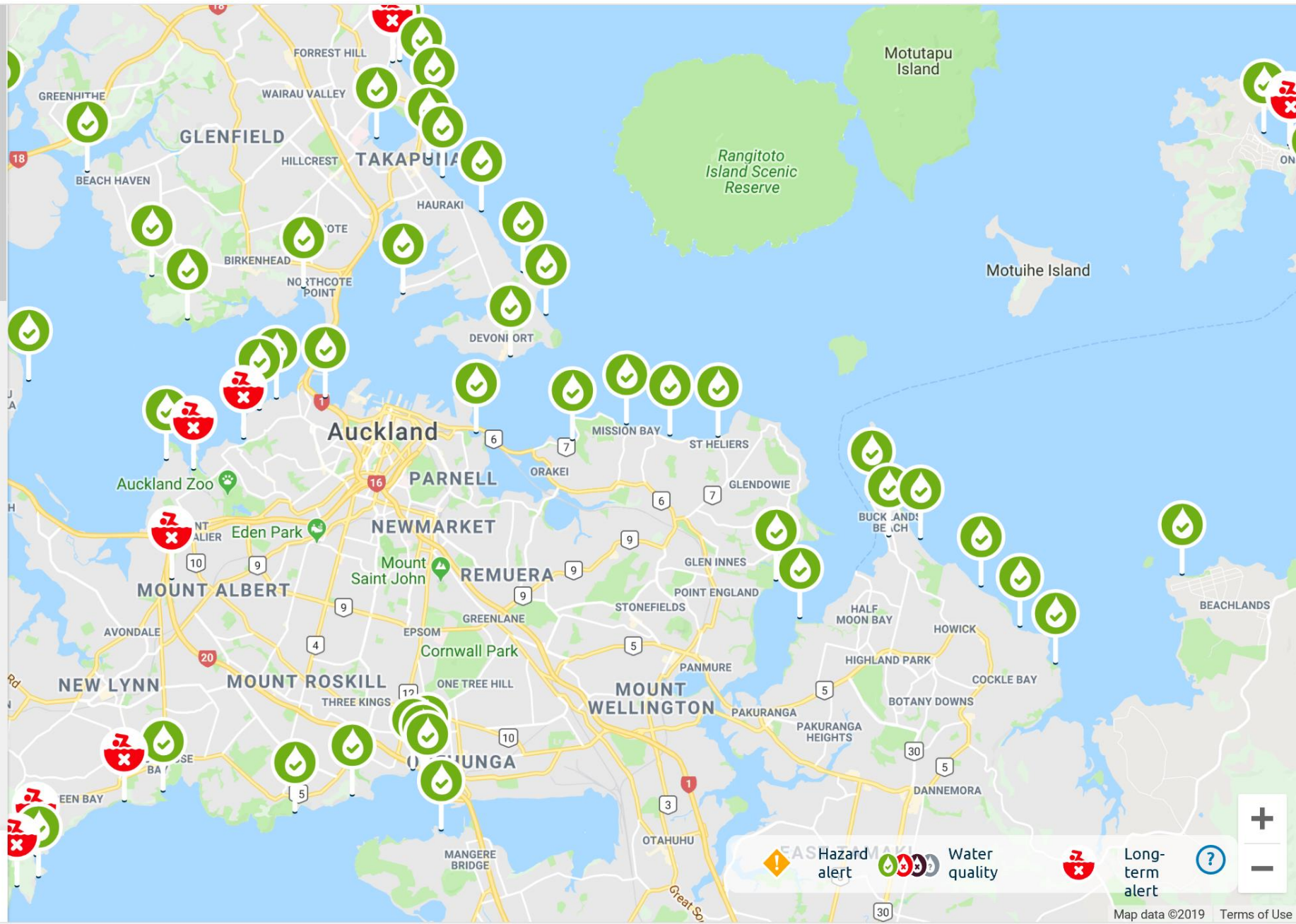
## Stay safe at the beach

### Noho haumarū

- Choose a lifeguarded beach and swim between the flags
- Ask a lifeguard for advice
- Don't overestimate your ability
- Keep young children within arm's reach at all times

### In an emergency

For injuries or medical issues ask for Ambulance, for rescue emergencies ask for Police





# Safeswim powered by Moata

Project: **Safeswim**

Scenario: **Safeswim**

Time Range:  
Relative Range **Absolute Range**  
Sep 11, 2019 6:37 PM to Sep 18, 2019 6:37 PM

Radars - Depth Grids

Water Quality Playback

Animated Water Quality Mo...

Catchments

WASTEWATER BASE GIS DATA

Transmission Network

Pipe

Built

Map Reports

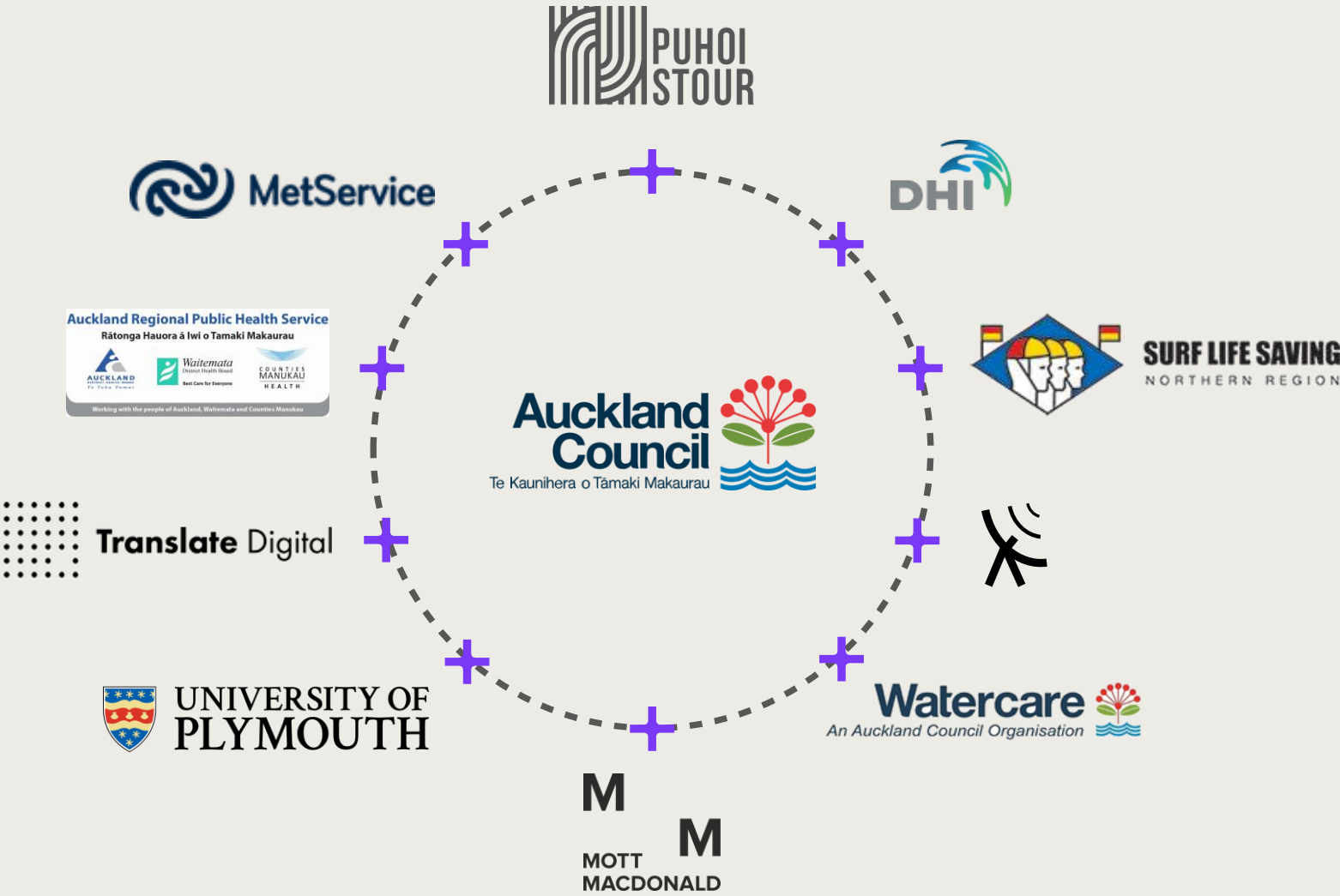
Search

11/9/2019 18:35 pm

MOATA

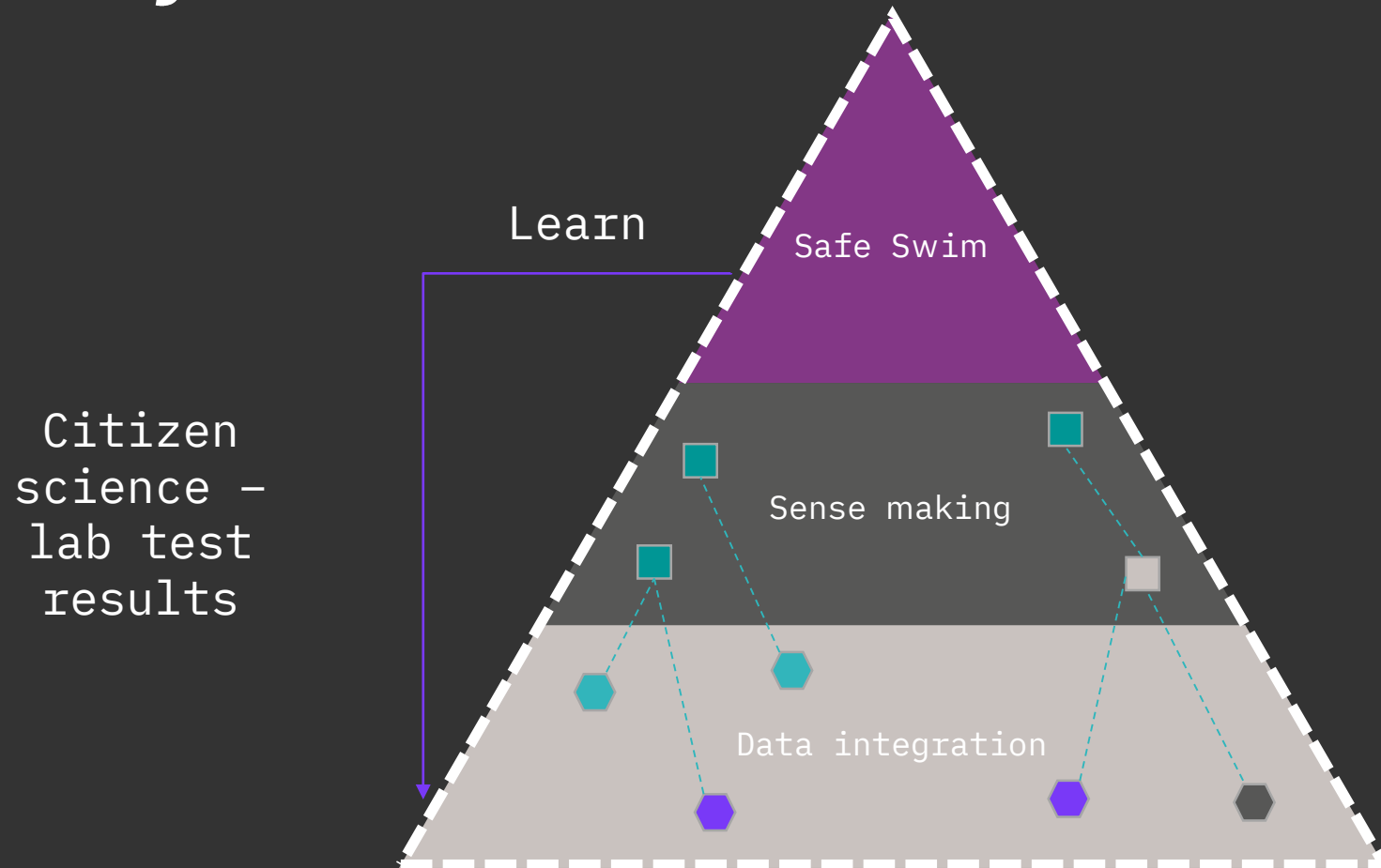
Alex Osti

# It's partner ecosystem



# Learning is Evolving

# Learn cycle





# Enhanced social, economic and environmental outcomes



# Thank you

**M**

MOTT  
MACDONALD

**M**

SMART  
INFRASTRUCTURE