

Accelerating for Growth:

Delivering Warkworth to Snells Wastewater Infrastructure

Jacob Whitford

19 September 2019



Overview

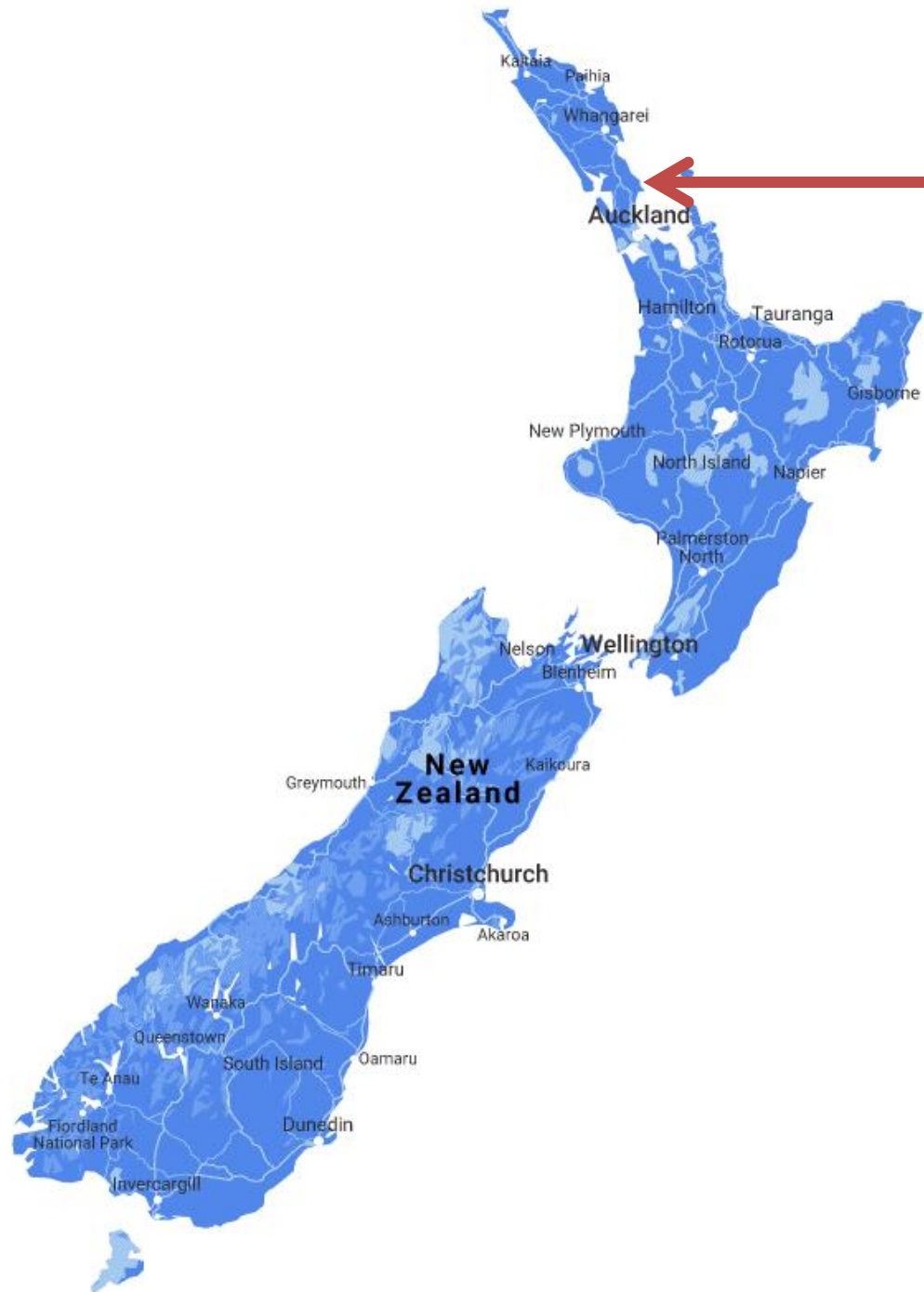
The Region

The Project

Challenges

Our Approach

Lessons Learnt



Warkworth
Snells Beach
Algies Bay

The Region

WARKWORTH

Warkworth
WWTP

Serviced
Area

Future
Urban Zone

Mahurangi River

SNELLS BEACH

Existing
Snells-Algies
WWTP

ALGIES BAY

Puhoi to
Warkworth
Motorway

Mahurangi
Harbour

Mahurangi Harbour

Existing
Snells-Algies
Outfall

The Region



WARKWORTH

Warkworth to Snells
Transfer Pipeline

SNELLS BEACH

New Snells
Beach WWTP

ALGIES BAY

New
Snells-Algies
Outfall

Mahurangi Harbour

The Region

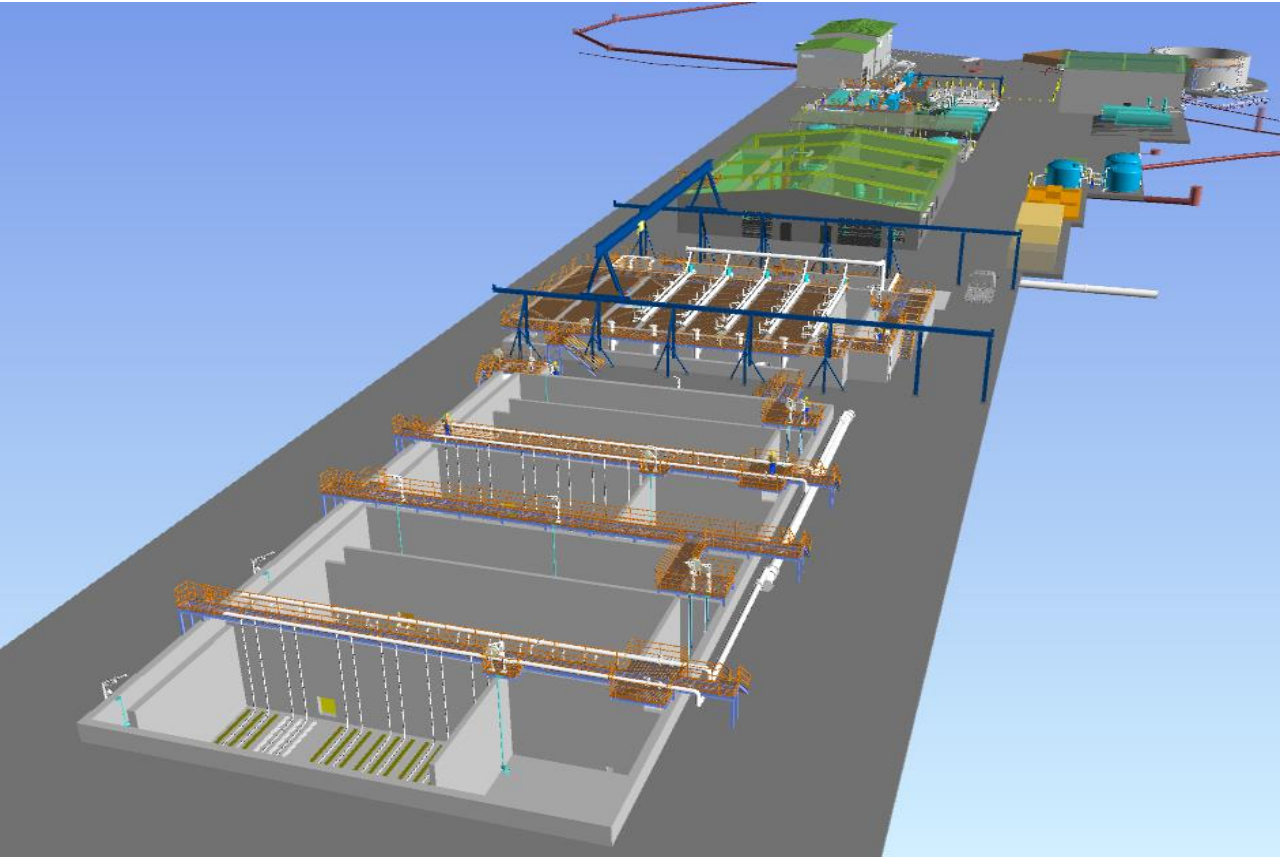


Before

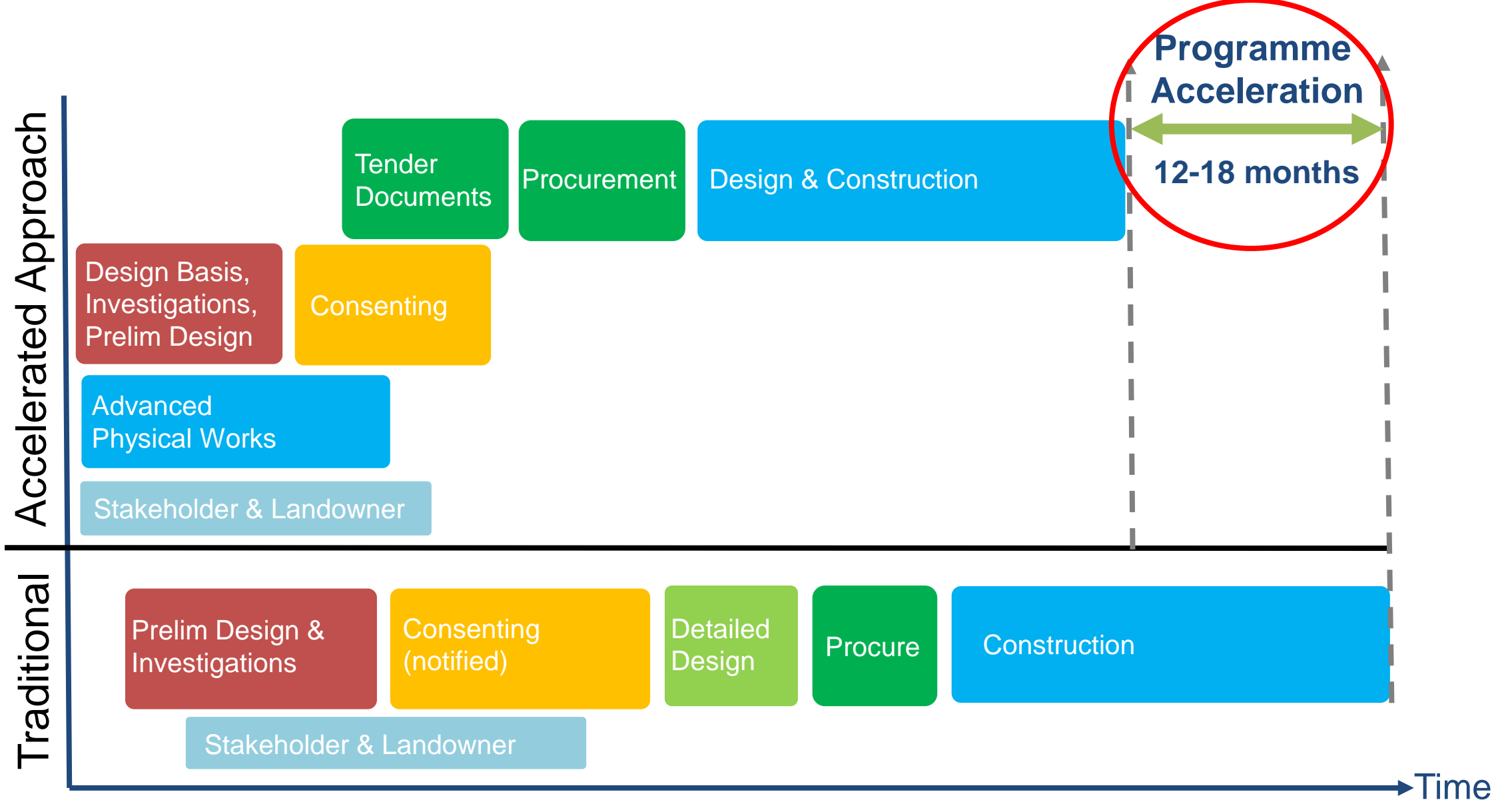


The Project

Proposed

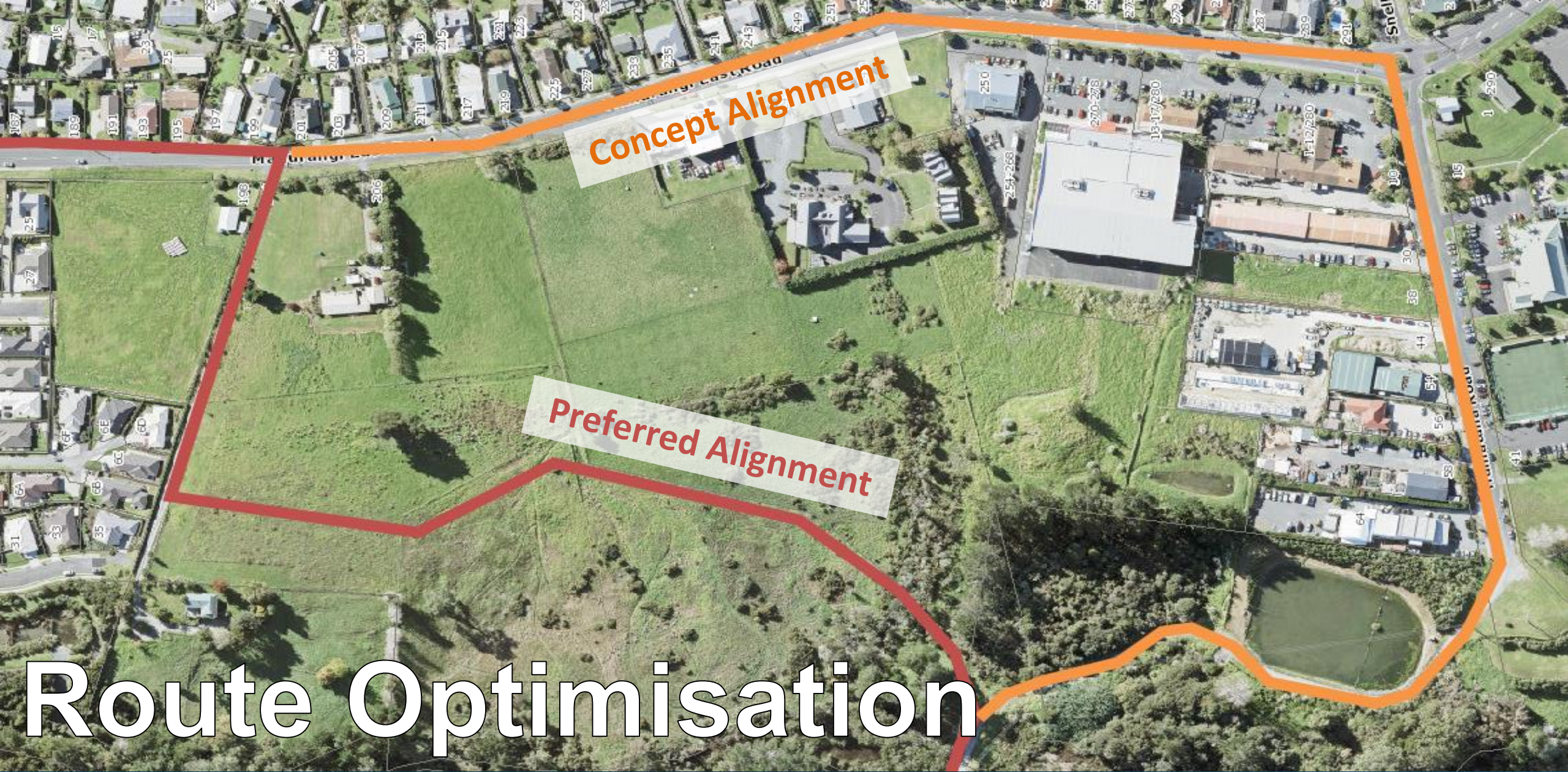


The Project





Challenges



Concept Alignment

Preferred Alignment

Route Optimisation

Our Approach



Stakeholder Buy-in

Our Approach



Land Acquisition & Entry Agreements

Our Approach



Early Investigations

Our Approach



Advanced Physical Works

Our Approach

Lessons Learnt

Adopt adaptive approach to alignment

Consult early with targeted stakeholders and landowners

Prioritise Resource Consent activities and anticipate delays

Summary

One of the fastest growing regions in NZ

Cater for growth and improve service

Typical and unique challenges

Parallel delivery model

Adaptive design, early consultation, consent focus

Accelerating for Growth:

Delivering Warkworth to Snells Wastewater Infrastructure

Jacob Whitford

19 September 2019

Jacob.Whitford@water.co.nz