

Watercare STP

Building Technology Enabled Planning Capability

Brendon Harkness

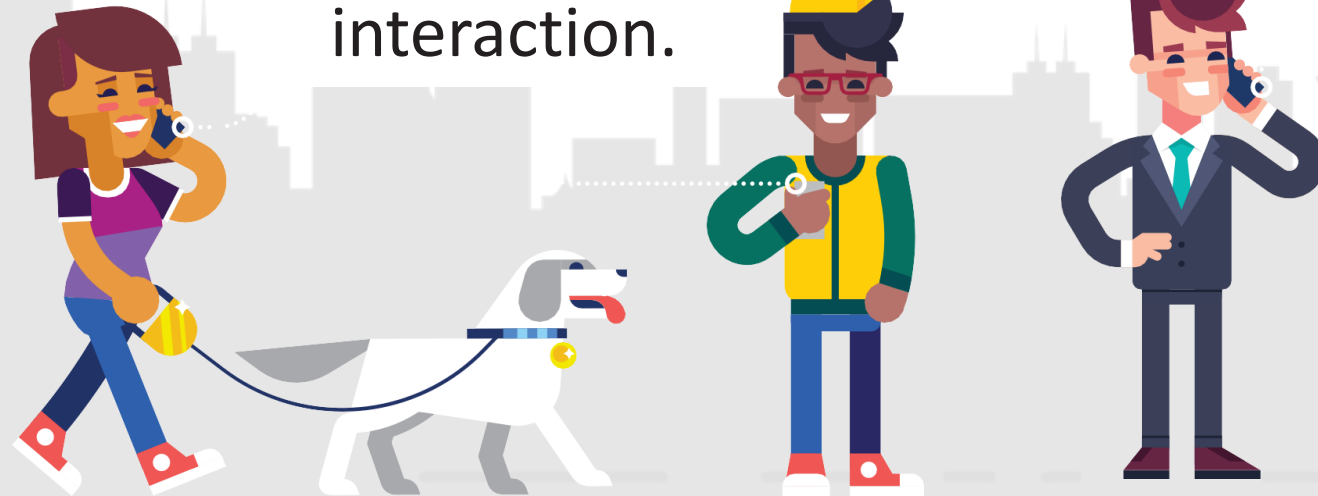
September 2019

Strategic Transformation Programme

Every employee has the right tools, the best processes and is empowered.

A customer can do everything for themselves, wherever they are, in a single interaction.

Every employee can make insight-informed, fact-based decisions with confidence.



(The view through the command pod of a B-wing fighter)

Gyroscopic
command
pod

Powerful
engine

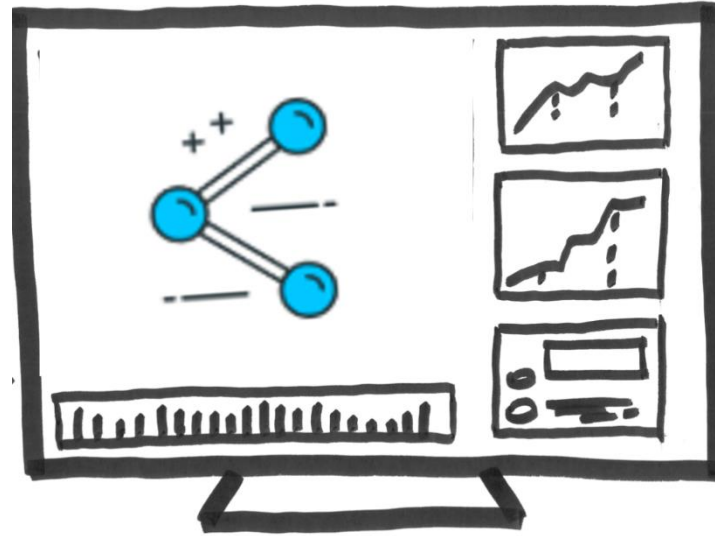
Heavy
weaponry

B-WING

COOR. AND. W. EADDER

LEWIS & CLARK

What problems are we solving for?



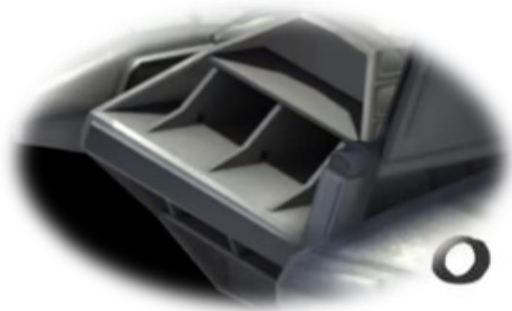
1. Smart storage

Outcomes

- Integrated sources
- Data visibility

Learning

- Infrastructure resilience
- Deployment pipeline



2. Improved Insights

Outcomes

- Insights library (cloud wiki)

Tactical Insights Library

  [Share](#)  [Add to My Spaces](#)

✓ Welcome to the Watercare Insights Library

This is the place find out about data, models, scenarios and dashboards that we use at Watercare.



If you would like a short video tour (3 mins 40 secs) of the Insights Library please click [here](#), this is a great way to jump start how you can use this resource.



Search Published Items



Featured Items

-  [Population Analysis Dashboard \(Release V2.0\)](#)
-  [Waste Water Dashboard \(Release V1.0\)](#)

Next you might want to:

- **Check out the catalogue** - Expand the sidebar and click a category to get started
 - [Draft items](#) (writeups on data, models and dashboards that are under review by the community)
- **Learn about the processes** that support effective use of the library
 - [Approach for adding to the library](#)
- **Take a look at the user guide** - [Find out](#) how to contribute to the library and learn about the moderation process

Recently Updated



Nish Dogra

 [Bulk Supply Point \(BSP\) Mapping to Water Balance Zone \(WBZ\)](#) updated May 15, 2019 • [view change](#)



Eric Lee

 [Geospatial Consumption](#) updated Apr 15, 2019 • [view change](#)

 [Geospatial Water Consumption](#) updated Apr 15, 2019 • [view change](#)

2. Improved Insights

Outcomes



- Insights library (cloud wiki)

Learning

- Concise requirements
 - Sharing / collaboration
 - Smart search
 - Links to data confidence & quality framework
 - Source / lineage of modeling
 - Version control

2. Improved Insights

Outcomes

- Population distribution model



Previous 2018 population distribution



Updated model - 2018 population distribution

2. Improved Insights

Outcomes

- Population distribution model

Learning

- Further refinement required
- User experience at heart of delivery
- Limitations with architecture / solutioning

Dashboard 1.0

Population Analysis - / Overview -

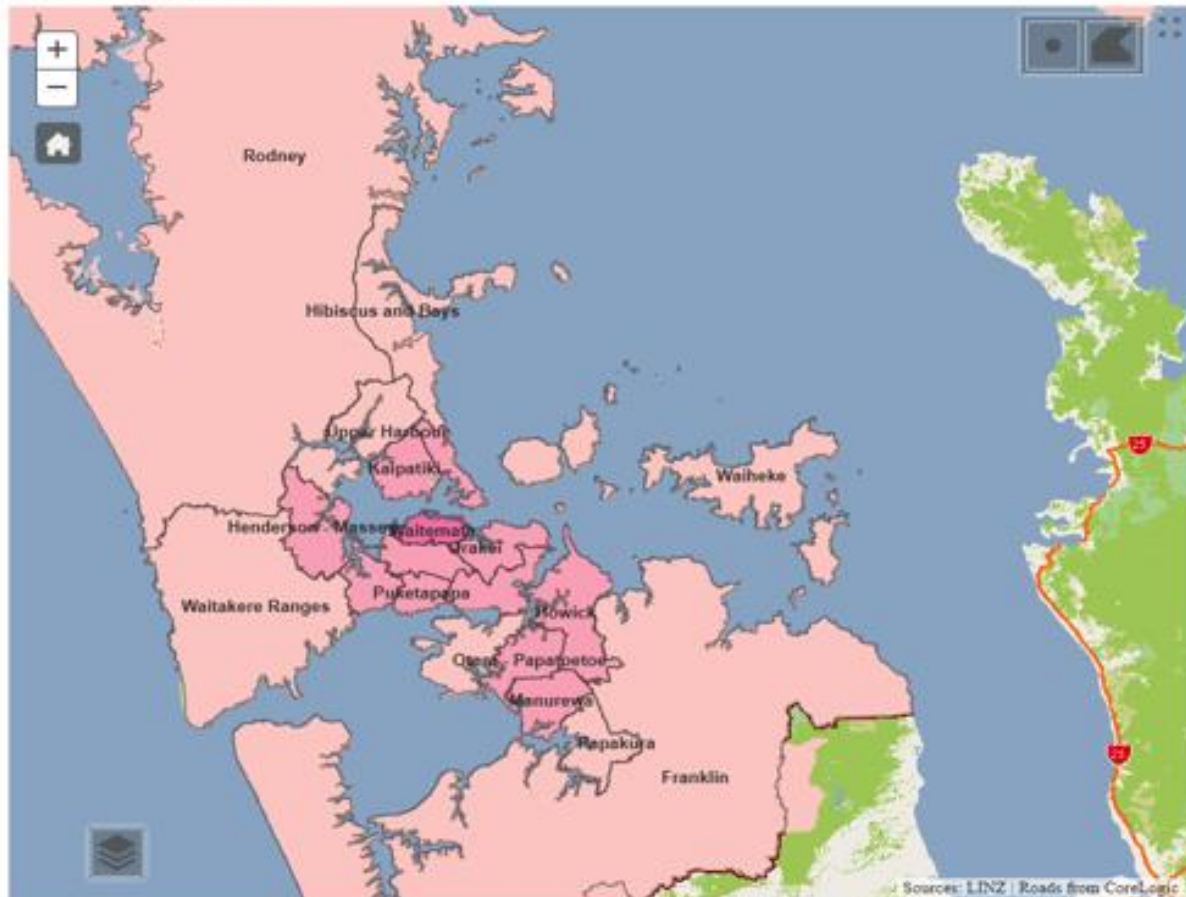
= Current

Population

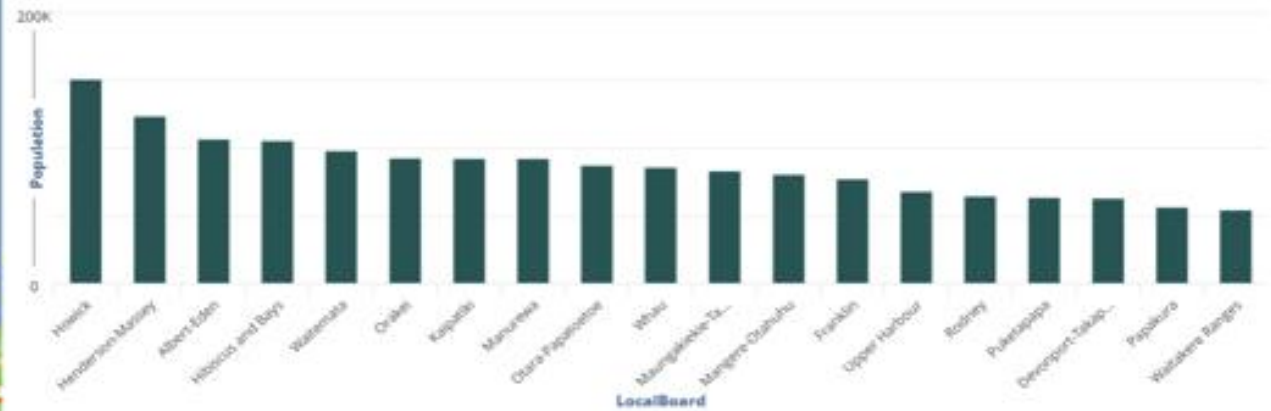
Population Density Growth

Choose Year from below

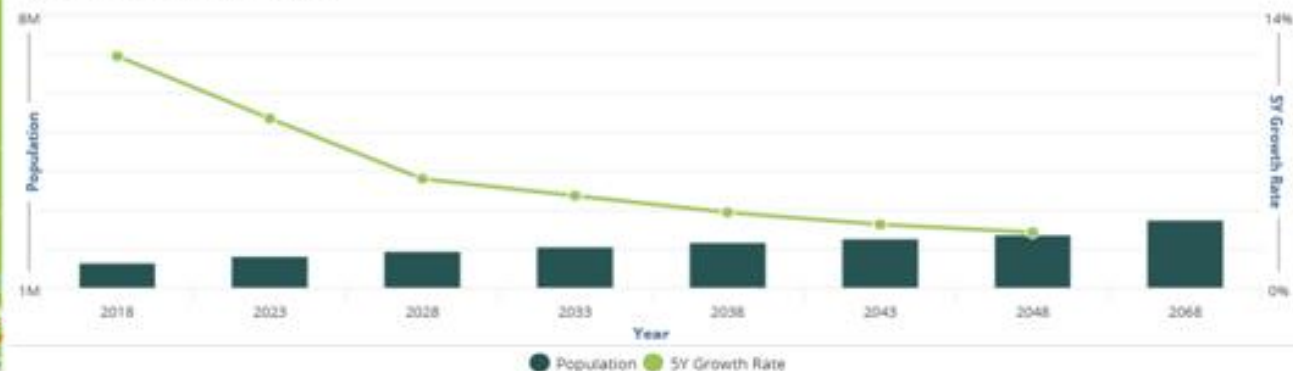
Current



Resident Population by Local Board



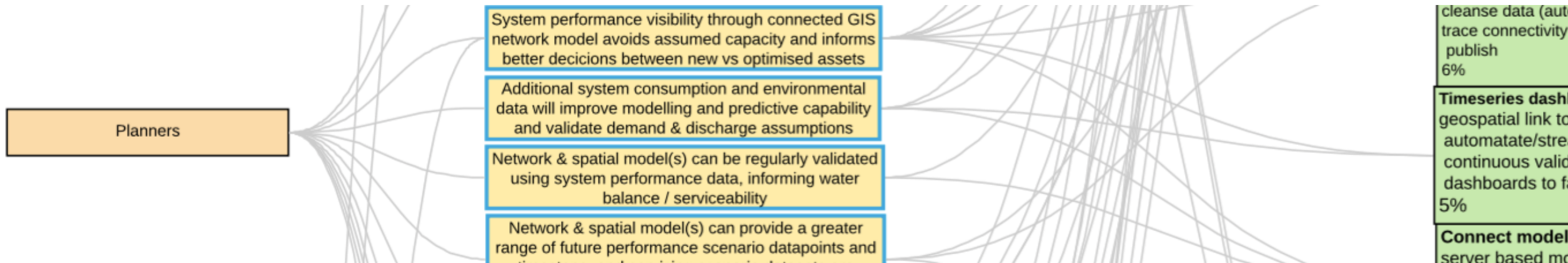
Resident Population Growth (%)



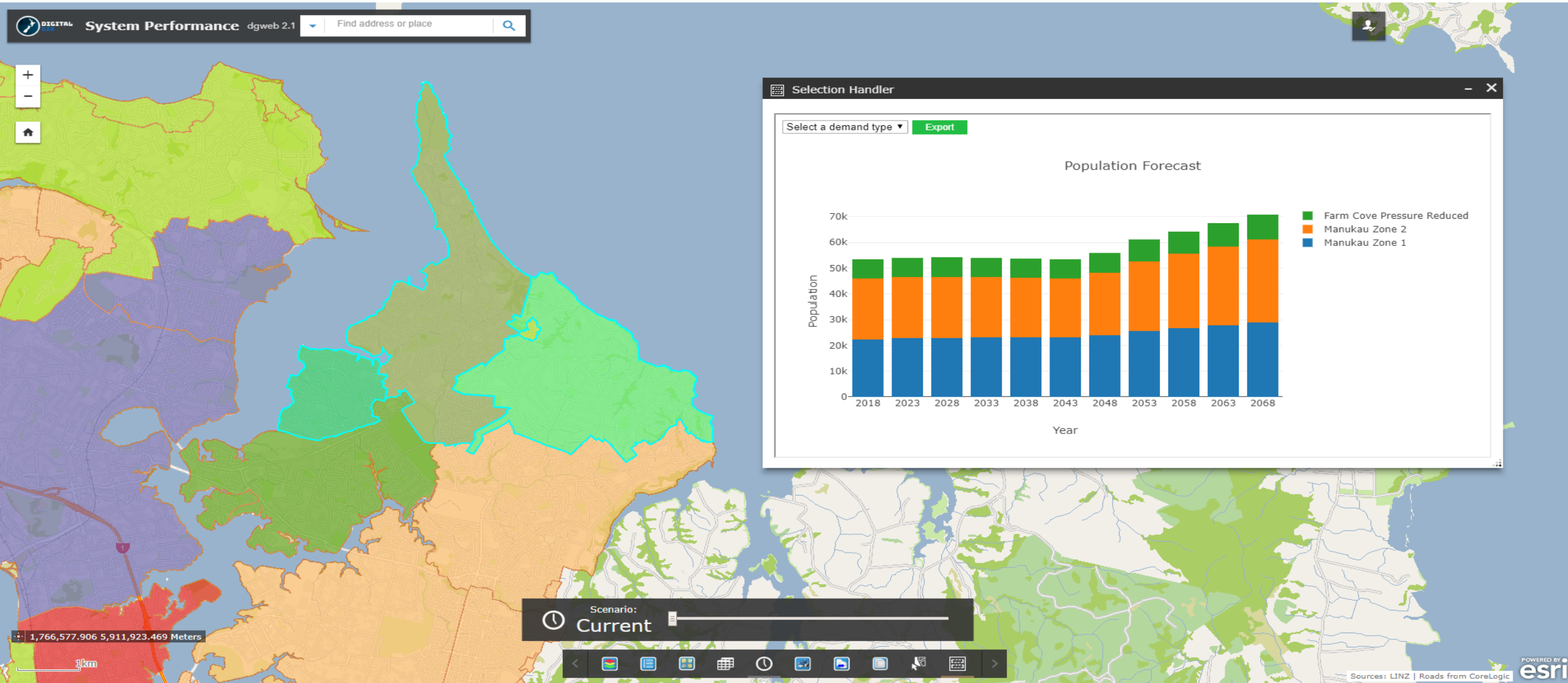
Sources: LINZ / Roads from CoreLogic

Outcome re-validation

- Reimagining
- Value focus / review
- Impact mapping



Dashboard 2.0



Dashboard 2.0

Outcomes

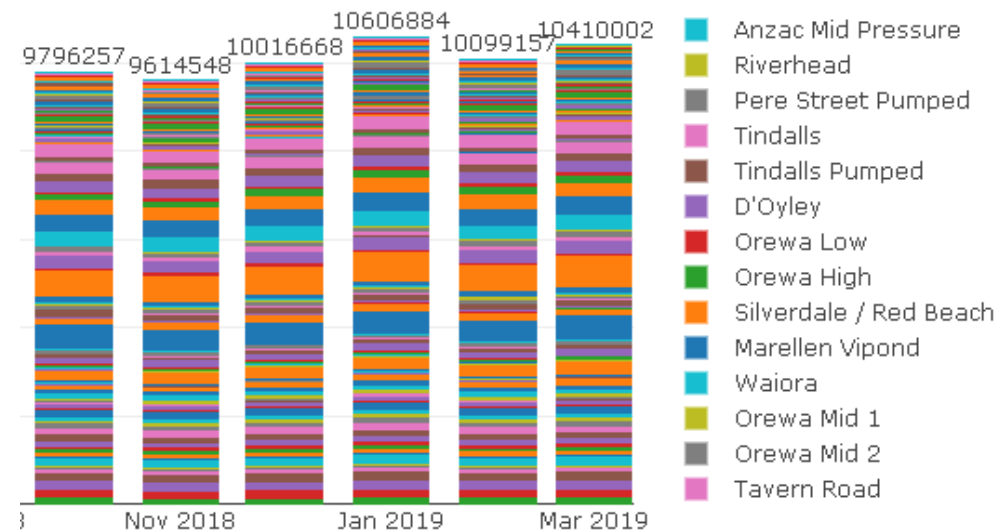


- Custom dashboard
- Historic / dynamic insights
- User focus

Learning

- Full stack architecture required
- Reusable microservices
- UX / UI input

Historical Consumption



3. Next gen GIS

Outcomes

- Geometric network PoC
- Wastewater network tracing
- Dynamic labelling
- Digital twin enabled

Learning

- Network wide GIS cleanse = value
- Streamlined model build



Where to next...

Digital twin

- Stakeholder impact assessments
- Boundary isolation
- Model validation & automation

Network analytics

- Regional activities
- Climate / disrupters



Where to next...

User hub & Workflow

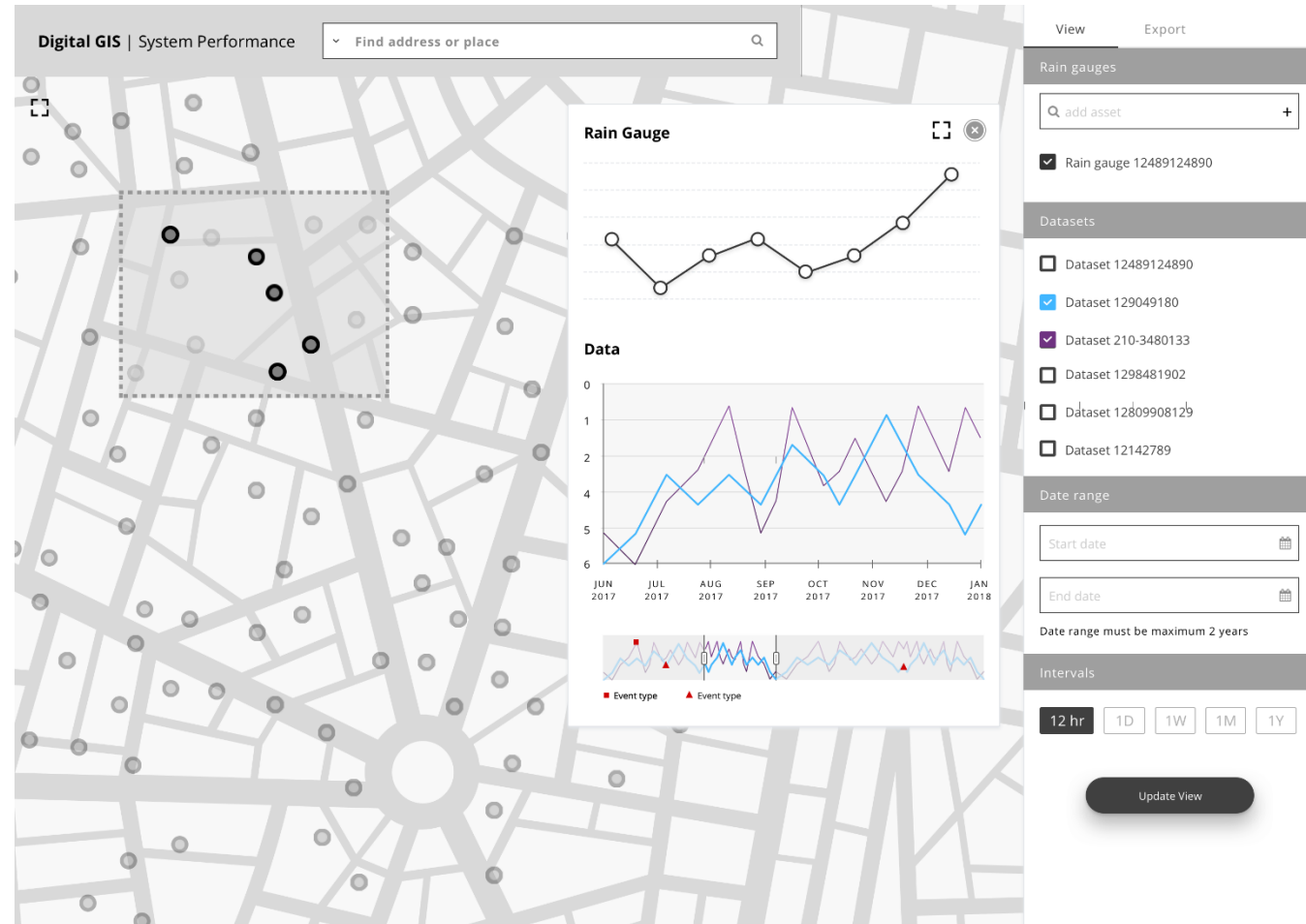
UX / UI refinement

Field data integration

Ways of working

- Agile planning
- Programme approach

System / data scaling



In conclusion

- Disruptive planning horizon requires stability
- Integrated storage improves pace; visibility
- Resilient deployment essential
- Dashboards provide powerful insights
- Geometric network improves network capability
- Future value through analytics; data integration
- Agile practices are effective in planning
- Watercare's approach is adaptable and scalable

Thank you

© 2014 WATERCARE. ALL RIGHTS RESERVED. WATERCARE.CO.NZ