

Developing National Water Sensitive Design Principles

Sarah Boone & Jo Burton
Ministry for the Environment

The Ministry's vision

Aotearoa – he whenua mana kura mo te tangata



<https://vimeo.com>

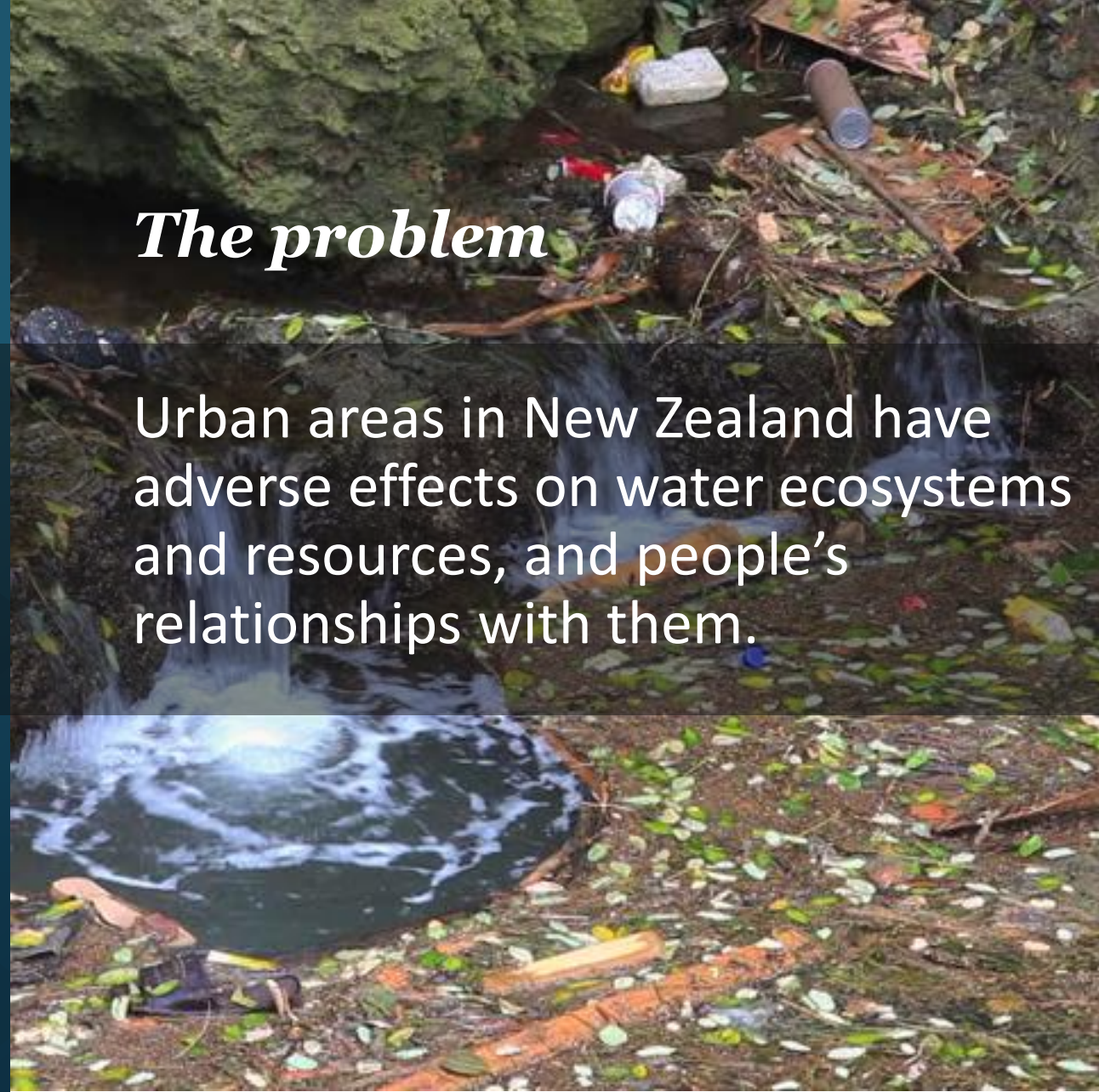
Our goal

Make Aotearoa
New Zealand the most liveable
place in the world...

...by creating water sensitive
cities that support healthy
people and ecosystems.

The problem

Urban areas in New Zealand have
adverse effects on water ecosystems
and resources, and people's
relationships with them.



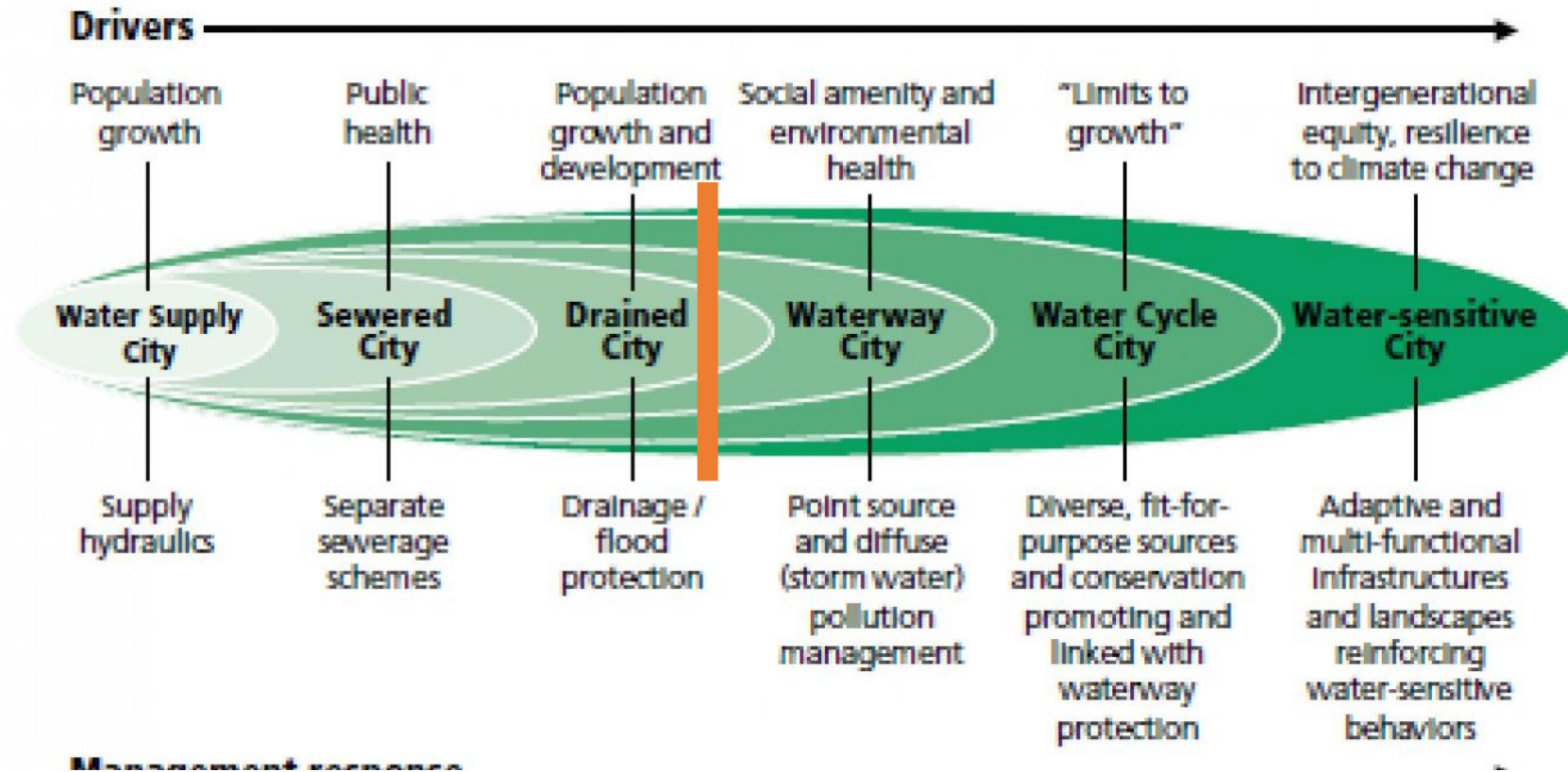
Ministry for the
Environment
Manatū Mō Te Taiao



Making Aotearoa New Zealand
the most liveable place in the world
Aotearoa – he whenua mana kura mō te tangata

Where is NZ on the water sensitive scale?

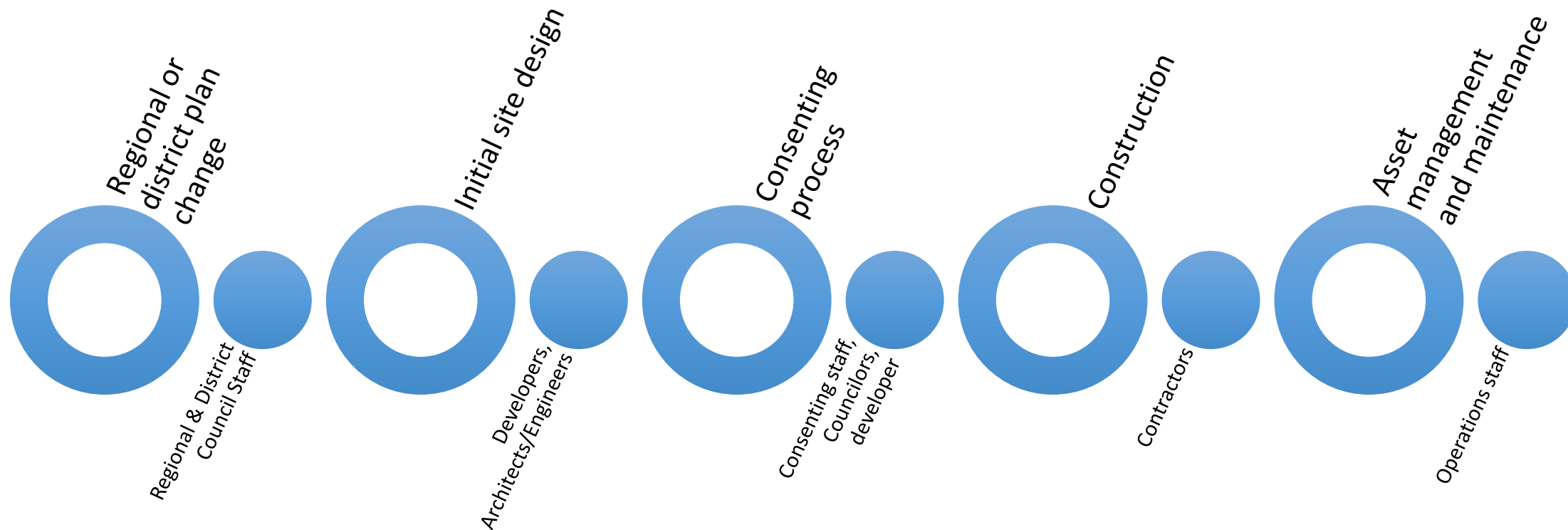
Urban water transition phases



A complex policy environment...

RMA Building Act LGA
Freshwater NPS NPS Urban
Regional Policy Statements Development Capacity
Regional Plans
District Plans Future Development Strategies
Consenting and planning guidance Urban Design Protocol
Codes of Compliance
Monitoring and reporting

Critical chain of decision makers



***Our challenge –
To create a shared vision for water
sensitive design among decision
makers at all levels and explore
options to align policy.***



Ministry for the
Environment
Manatū Mō Te Taiao



**Making Aotearoa New Zealand
the most liveable place in the world**
Aotearoa – he whenua mana kura mō te tangata

Collaborating to develop national Water Sensitive Design Principles.



Ministry for the
Environment
Manatū Mō Te Taiao



Making Aotearoa New Zealand
the most liveable place in the world
Aotearoa - he whenua mana kura mō te tangata



Establishing an expert working group



Ministry for the
Environment
Manatū Mo Te Taiao



**Making Aotearoa New Zealand
the most liveable place in the world**
Aotearoa - te whenua mana kua mā te tangata

Identifying priority pressures

- Diffuse pollution of sediment, metals and gross pollutants (esp. road runoff)
- Pollution related to the reticulated wastewater system – intentional point source overflows (CSOs) or diffuse discharges (leaks)
- Altered hydrology due to increased impervious surfaces
- Altered channel form and habitat
- Climate change and flood resilience



Providing for community values

- Intrinsic existence values – Ki uta ki tai, Mauritanga, Wairuatanga
- Spiritual/cultural values – Whakapapa, Kaitiakitanga, Rangatiratanga, sense of place
- Physical/provisioning values – Orangatanga, Mahinga kai, recreation
- Resilience values – flood risk management, climate resilience
- Aesthetic values – improved property value



Developing our initial 'long list' of principles

- Respect the intrinsic rights of water ecosystems - te mana o te wai
- Uphold and foster kaitiakitanga
- Respect Rangatiratanga
- Ensure the health of the receiving environment
- Provide for community needs, values and aspirations
- Use adaptive, site-specific solutions that learn from and work with nature
- Explore a holistic range of perspectives when creating urban spaces

Developing our initial 'long list' of principles

- Address pressures on natural waterbodies as close to source as possible
- Investments reflect a holistic consideration of costs and benefits
- Improve resilience of the built environment
- Ensure information on impacts and outcomes is communicated

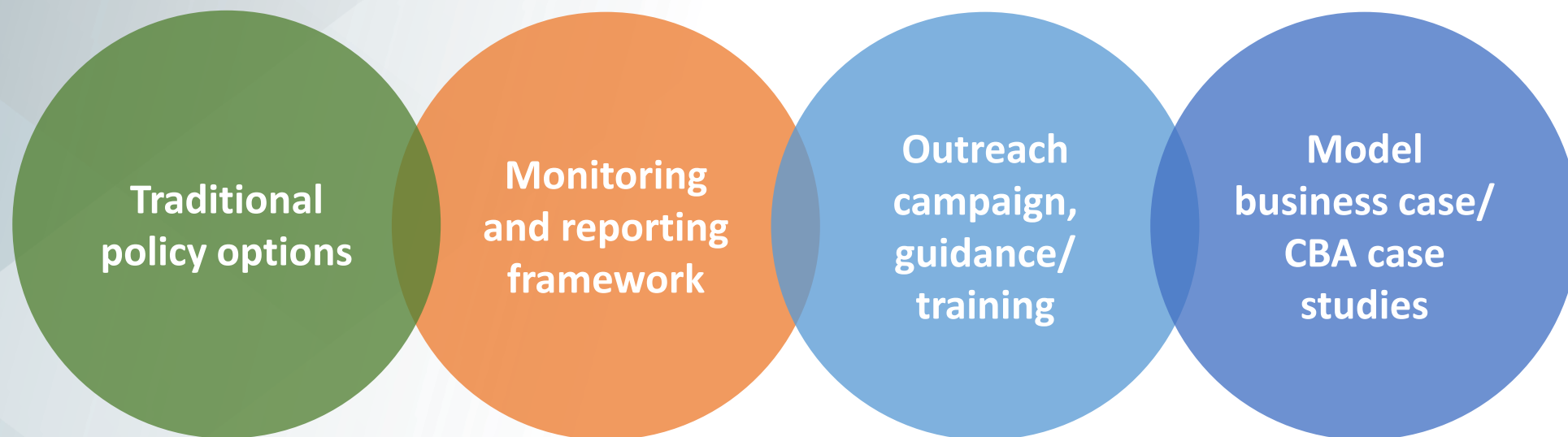
Identifying specific good practices?

Example

Address stormwater effects as close to source as possible

- Minimise impervious surfaces
- Reduce vehicle use and promote walkability, bicycle use or mass transit
- Carefully manage urban earthworks
- Reduce littering behaviour and the prevalence of disposables
- Capture diffuse pollution before it reaches sensitive receiving environments
- Mitigate point source pollution, such as overflows from sewerage networks

Considering implementation options



Where to next?

- *Iterative drafting of principles*
- *Seek council and industry endorsement*
- *Aligning policies*



Ministry for the
Environment
Manatū Mō Te Taiao



Making Aotearoa New Zealand
the most liveable place in the world
Aotearoa – he whenua mana kura mō te tangata

Ngā mihi nui.

Sarah Boone

Sarah.Boone@mfe.govt.nz

Jo Burton

Jo.Burton@mfe.govt.nz



Ministry for the
Environment
Manatū Mō Te Taiao



Making Aotearoa New Zealand
the most liveable place in the world
Aotearoa – he whenua mana kura mō te tangata