

# THE REALITIES OF ADAPTIVE FLOOD RISK MANAGEMENT

Wai Ora – Rising to the Challenge

23 May 2018

Christchurch  
City Council 

**JACOBS**<sup>®</sup>

[www.jacobs.com](http://www.jacobs.com) | worldwide

# Disclaimer

## Important

The material in this presentation has been prepared by Jacobs®.

Copyright and other intellectual property rights in this presentation vest exclusively with Jacobs. Apart from any use permitted under applicable copyright legislation, no part of this work may in any form or by any means (electronic, graphic, mechanical, photocopying, recording or otherwise) be reproduced, copied, stored in a retrieval system or transmitted without prior written permission.

Jacobs is a trademark of Jacobs Engineering Group Inc.

© Copyright  
Jacobs Engineering Group Inc. All rights reserved.  
May 29, 2018

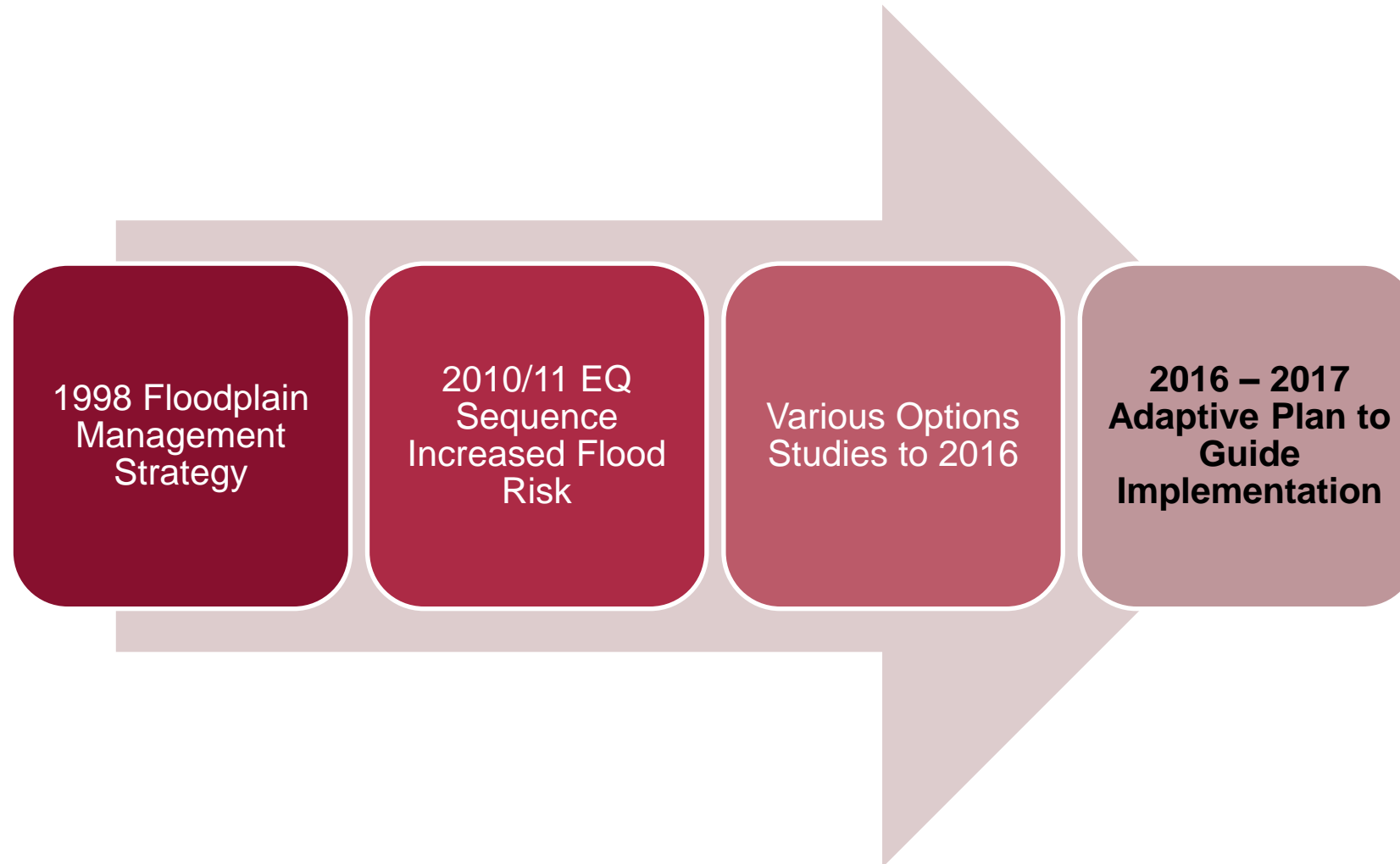
# Agenda

1. Purpose of the Project
2. July 2017 Floods
3. Lessons Learned



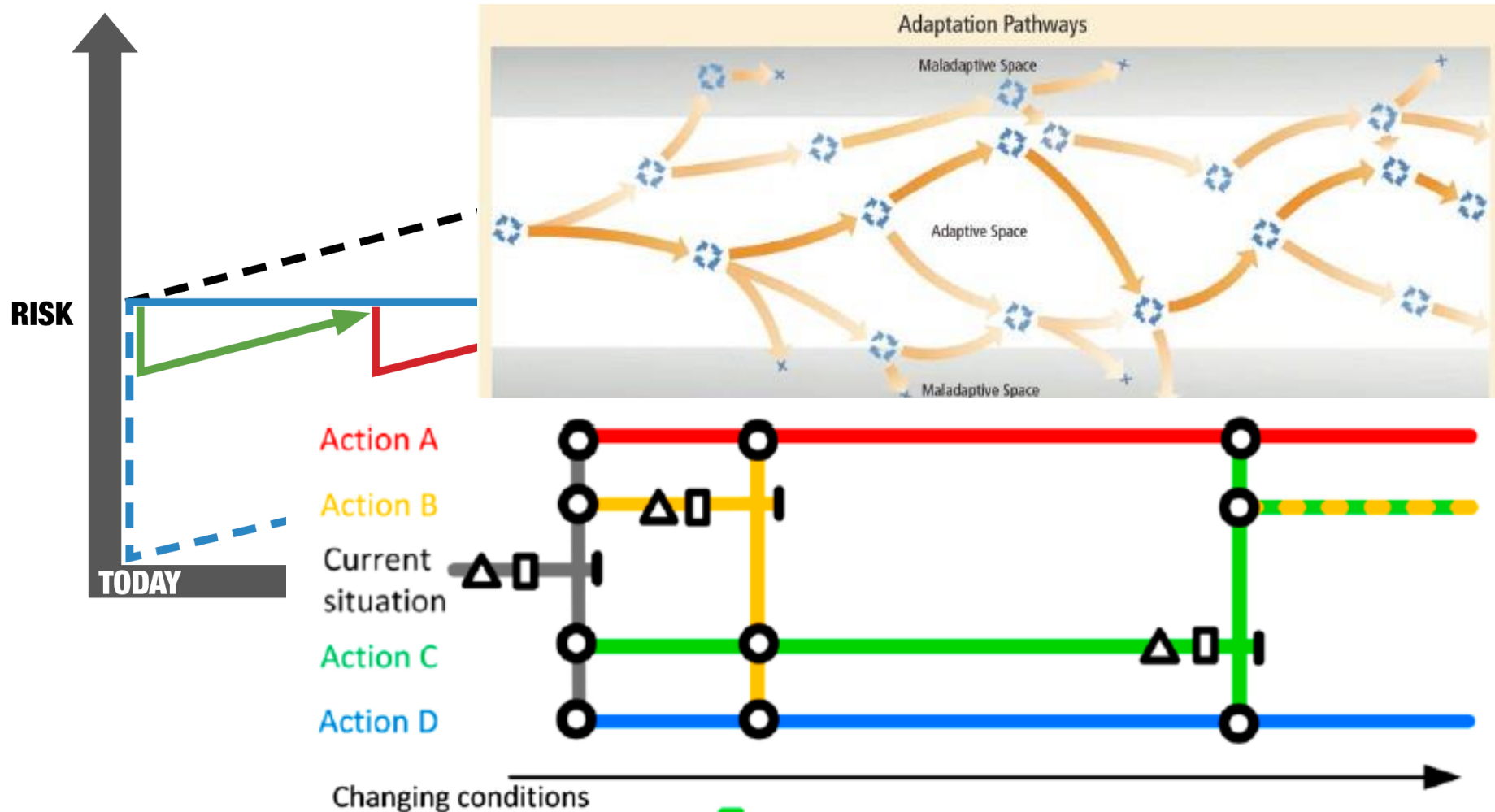
# Purpose of the Project

- To develop an **adaptive plan to manage flooding** in Christchurch's Heathcote catchment

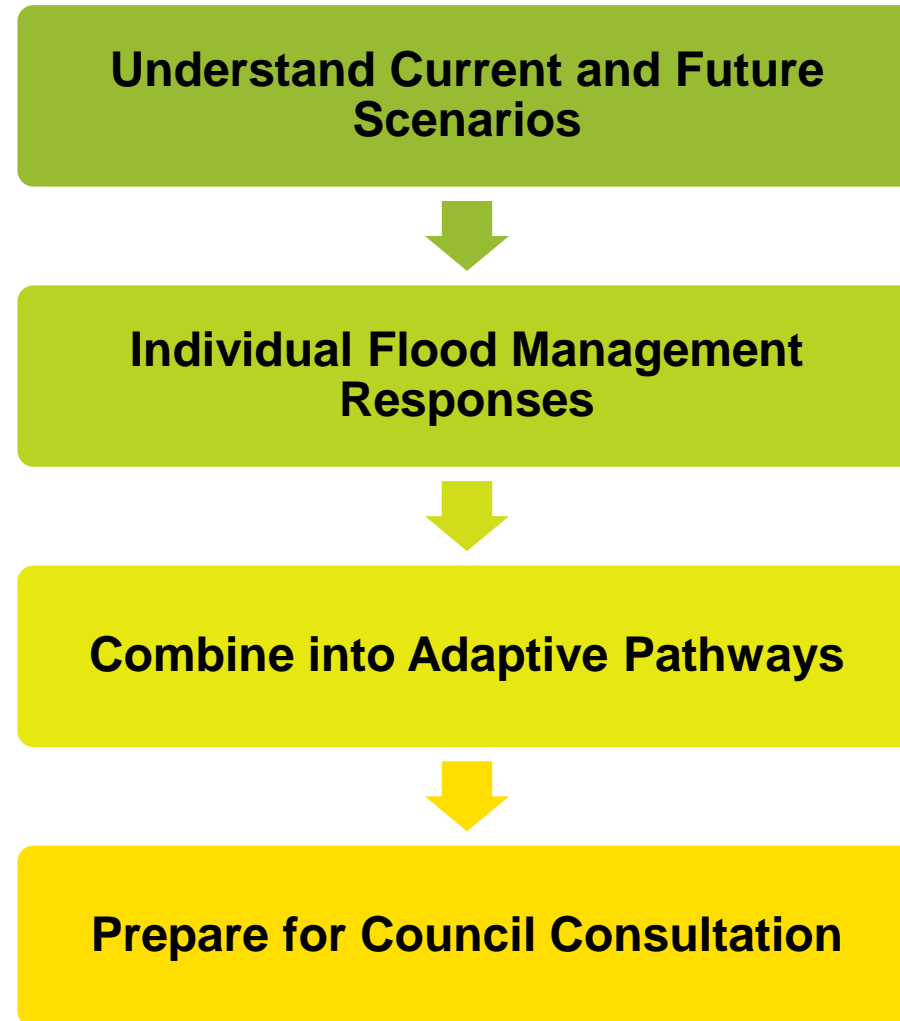


# Purpose of the Project

- To develop an **adaptive plan to manage flooding** in Christchurch's Heathcote catchment

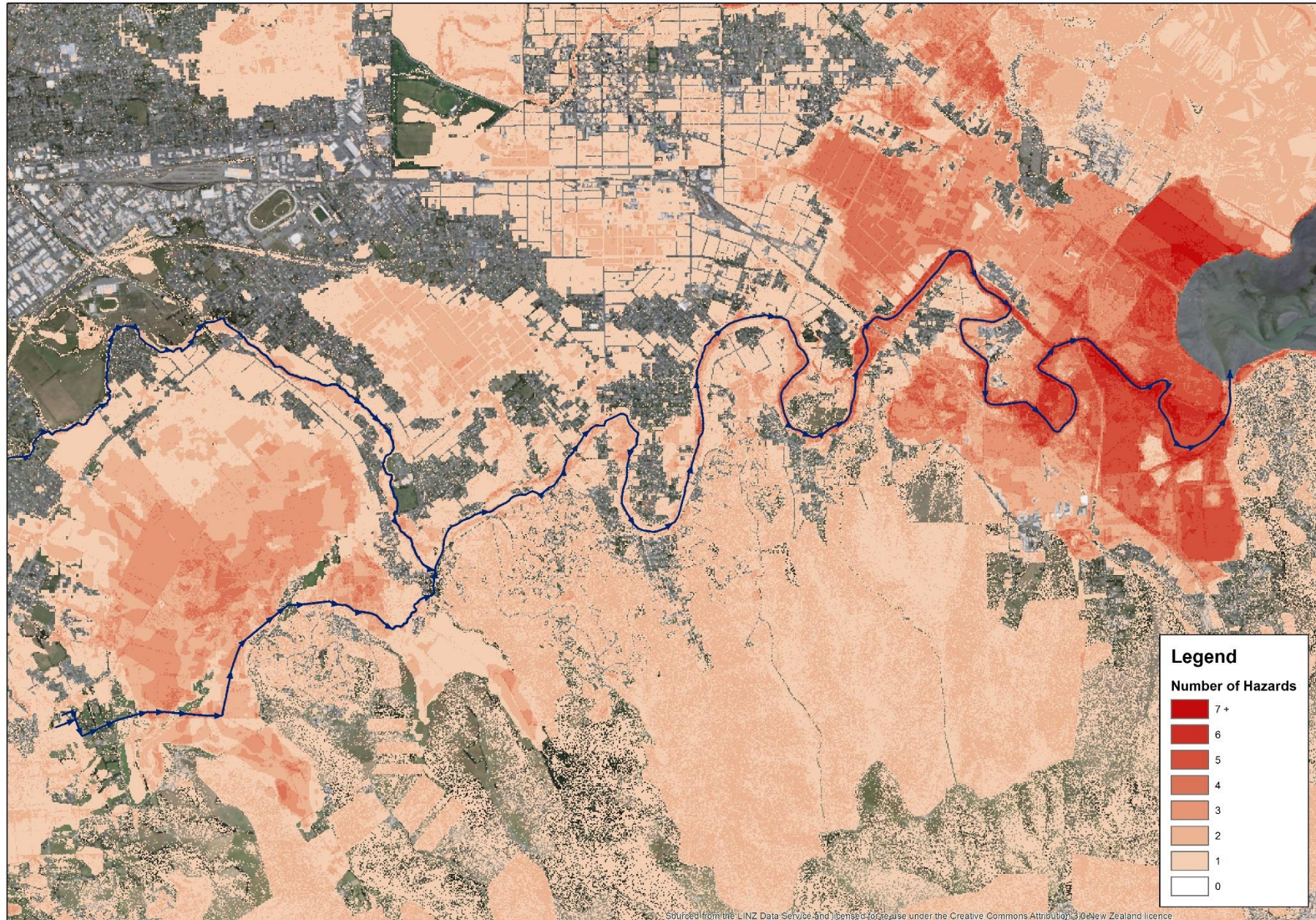


# Project Plan





# The Heathcote Catchment





# July 2017 Flooding

- Project was towards the end of testing individual options when....

## THE PRESS

News Sport Business Christchurch life

### Photos: State of emergency Christchurch floods

Last updated 20:16, July 22 2017



Civil Defence assess along Riverlaw Terrace beside

## THE PRESS

News Christchurch Earthquake 2011 North Canterbury



### Christchurch City Council wants to reduce Heathcote River flooding

TINA LAW  
Last updated 17:41, September 14 2017



Christchurch City Council is working on options to reduce the impact on flooding

## THE PRESS

News Christchurch Earthquake 2011 North Canterbury Mid Canterbury Selwyn West Coast



### Council wants to spend \$72m addressing flooding along Heathcote River

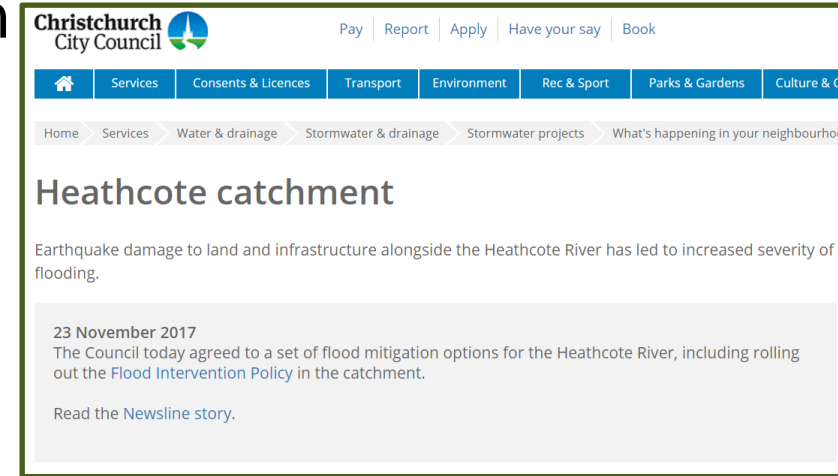
TINA LAW  
Last updated 19:41, November 8 2017





# A Successful Outcome

- Substantially reduce flooding in current climate, and some way into the future
- Climate change may occur relatively slowly, but influential events can occur suddenly
- Plans in place assists implementation when opportunities arise



Christchurch City Council

Pay | Report | Apply | Have your say | Book

Home Services Consents & Licences Transport Environment Rec & Sport Parks & Gardens Culture & C

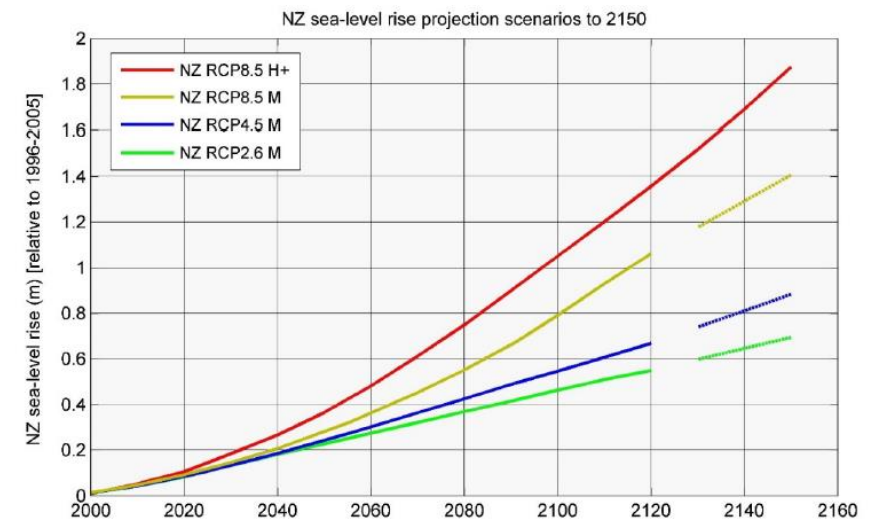
Home Services Water & drainage Stormwater & drainage Stormwater projects What's happening in your neighbourhood

## Heathcote catchment

Earthquake damage to land and infrastructure alongside the Heathcote River has led to increased severity of flooding.

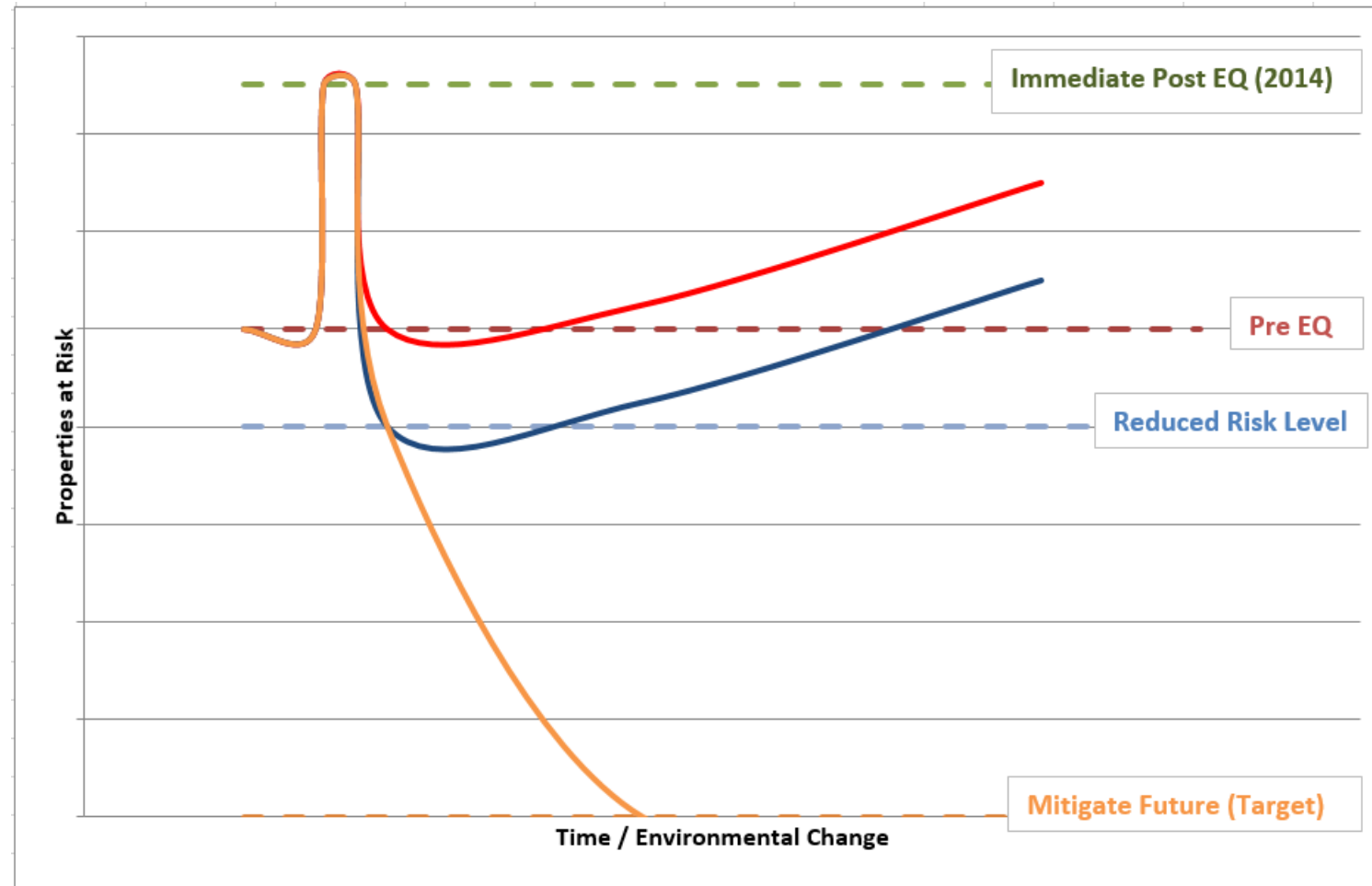
23 November 2017  
The Council today agreed to a set of flood mitigation options for the Heathcote River, including rolling out the [Flood Intervention Policy](#) in the catchment.

[Read the Newsline story.](#)



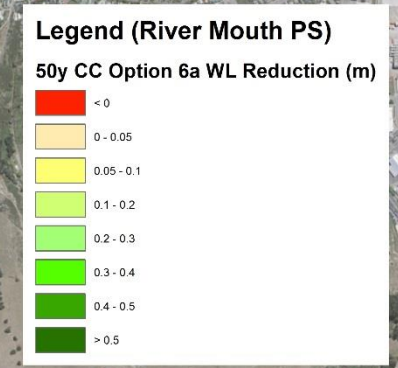
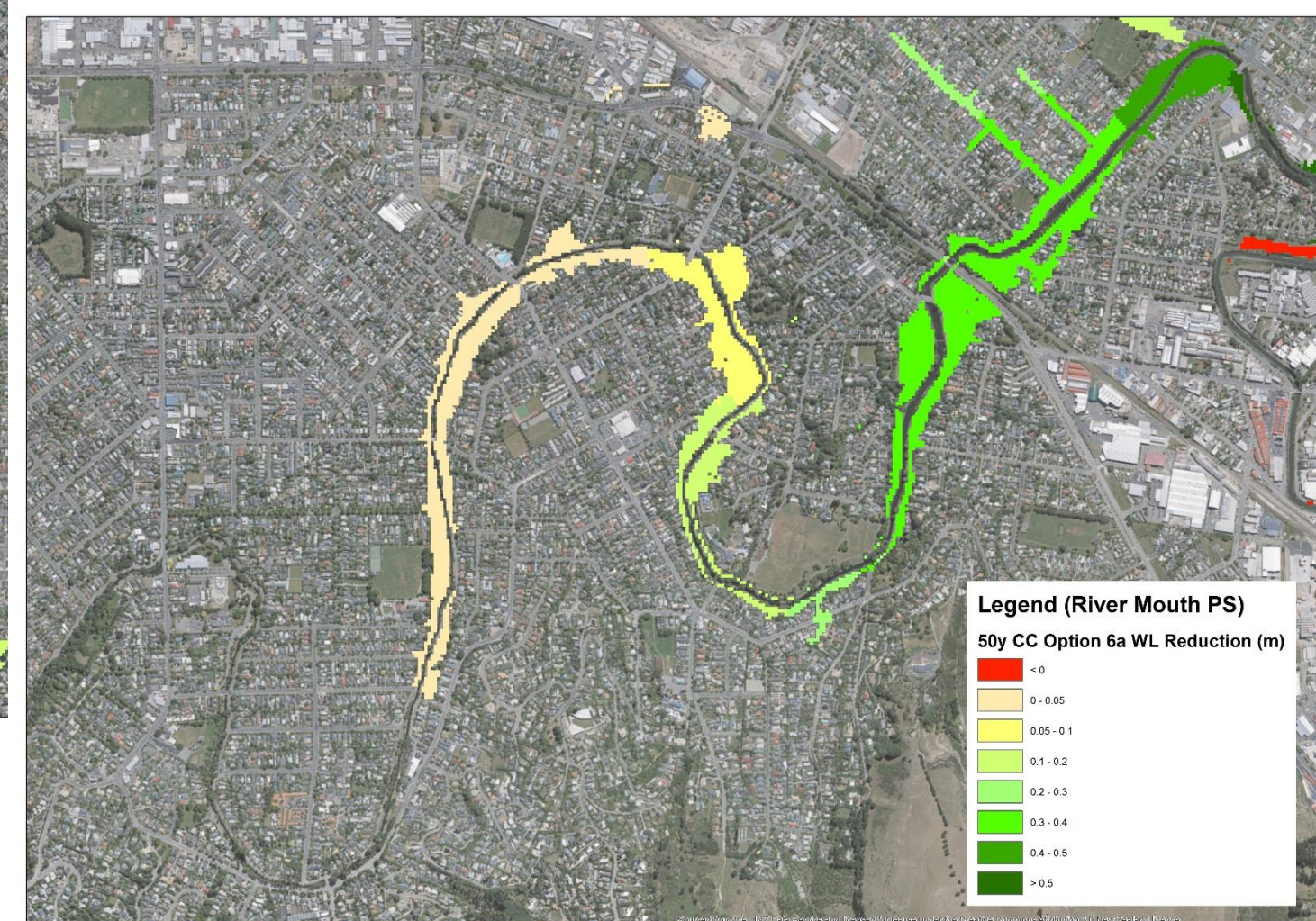
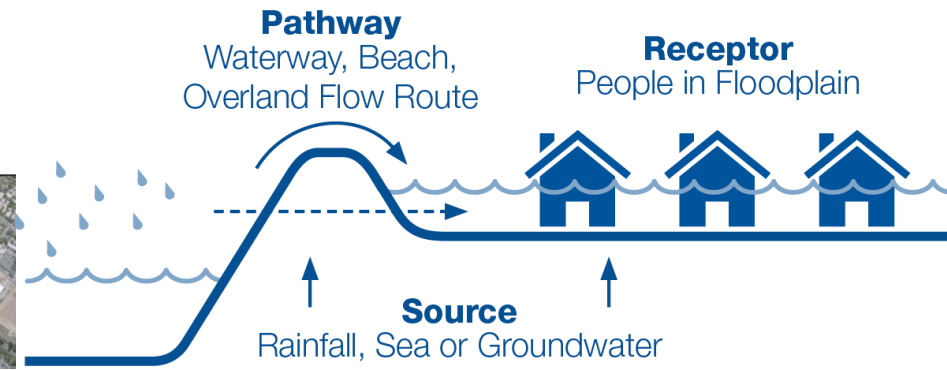
# Setting Objectives For The Plan

- What is a tolerable level of flood risk?



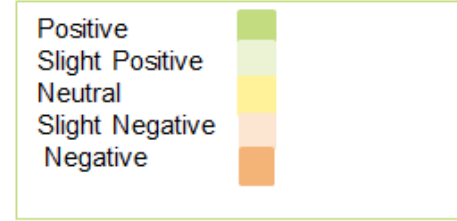


# Options Development



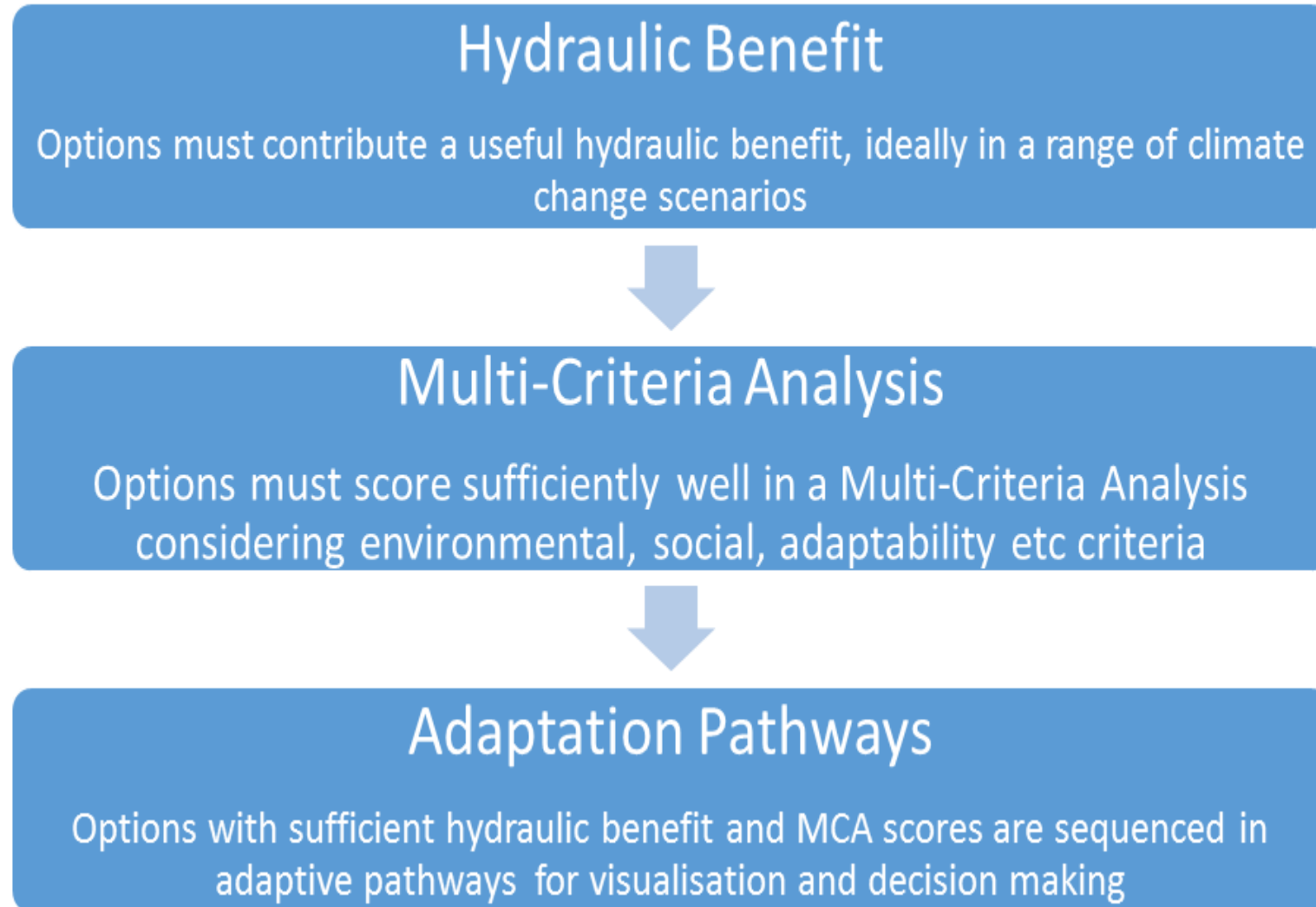


# Multi-Criteria Analysis

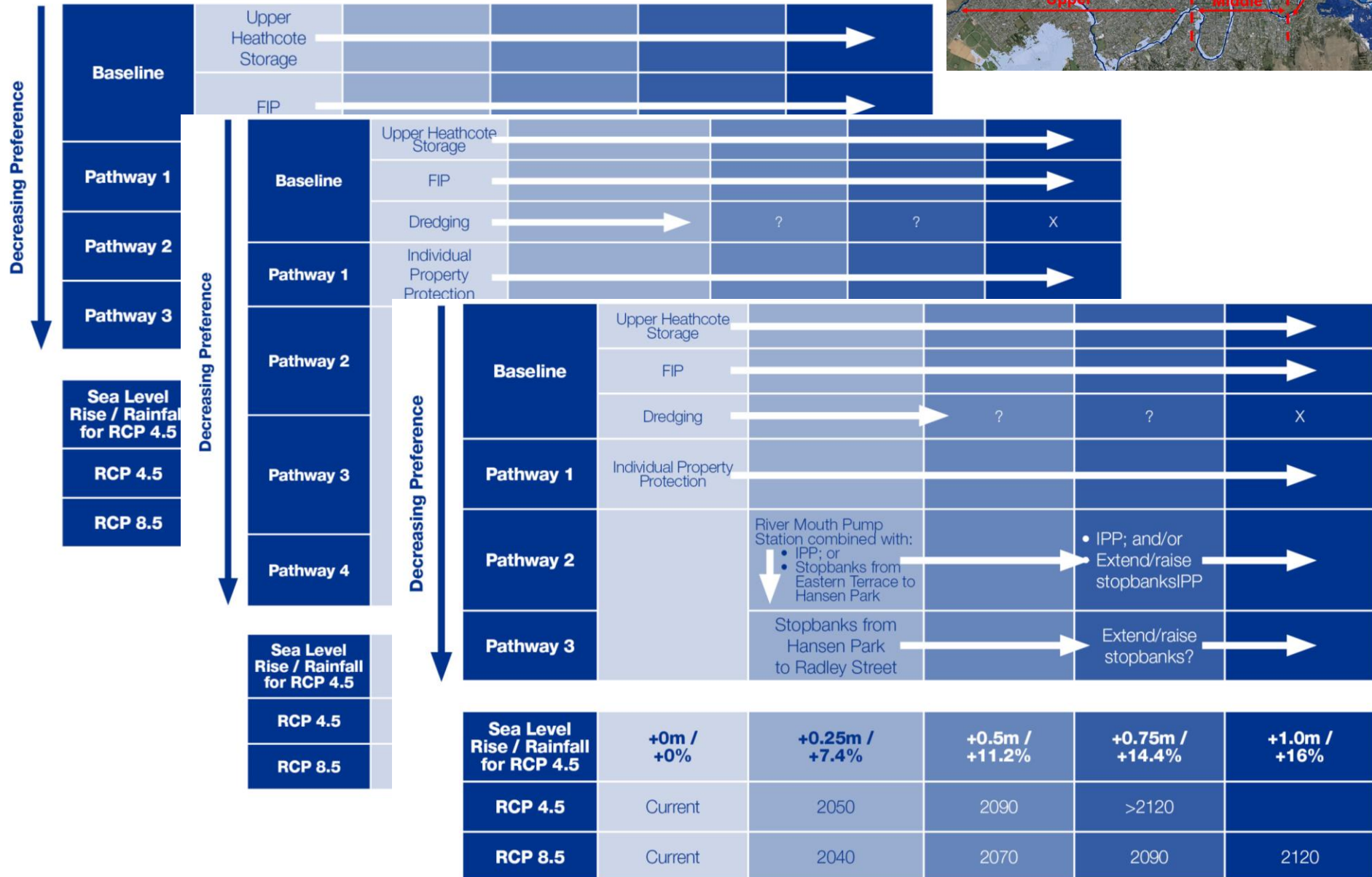


Outcome	Criteria	Flood Intervention Policy	Room for the River	Further Upstream Storage	River Mouth Pump Station	Dredging	Bypass Culverts	Stopbanks (and Floodwalls)	Individual Property Protection
Environment	Ecology	0	+1	-1	-1	-2	-1	-1	0
	Landscape	0	+2	0	-2	0	0	-2	-1
	Heritage and Culture	0	+1	-1	0	-1	0	0	0
	Community Impact	0	-2	-1	-2	0	0	-2	-1
	Construction	-1	-1	-1	-2	-1	-2	-2	-2
Long Term Sustainability	Long Term Hydraulic Sustainability	+2	+2	+2	+2	-1	-1	0	-1
	Degree of Adaptability	0	+2	+2	+1	+1	0	-2	+1
Risk	Legal Risk	+1	-2	-1	-2	-1	-1	-1	-2
	Time Frame Risk	+2	+2	+1	+2	0	0	-1	-2
	Robustness	+2	+2	+1	+1	0	+1	-1	0
Multi-hazards	Impact of Multi-hazards	+2	+2	0	+1	+1	-1	-1	+1

# A Decision-Making Framework for Adaptation

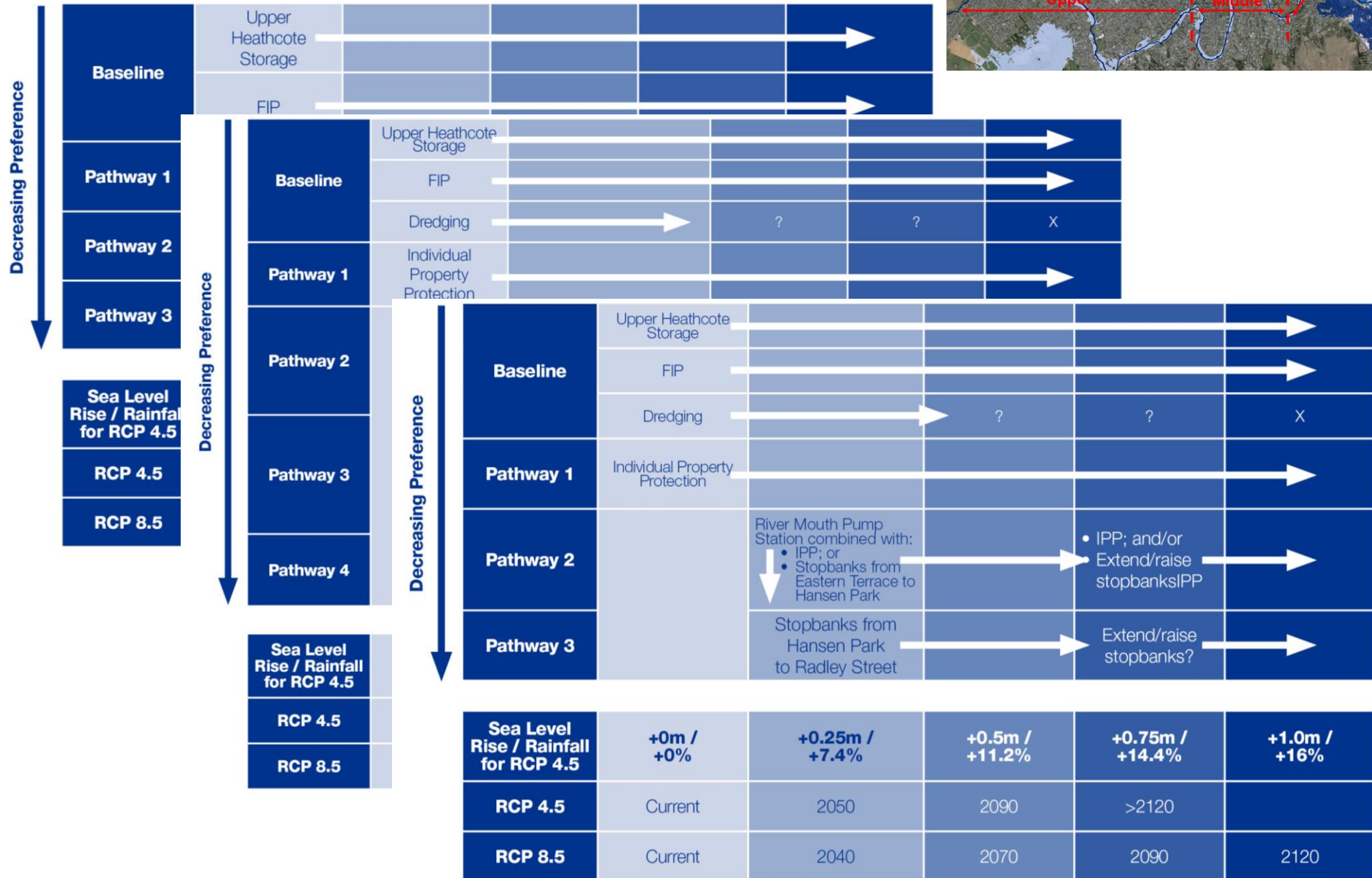


# Adaptive Pathways



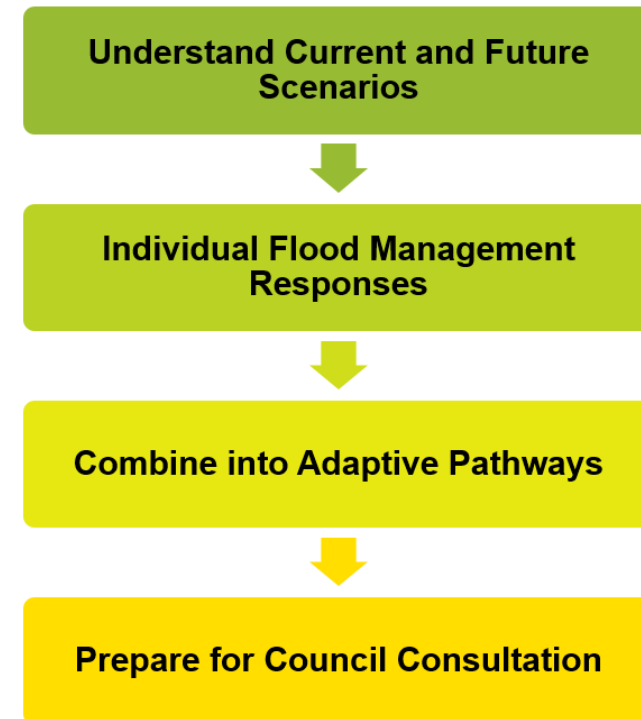


# Adaptive Pathways



# Where Are We Now?

- Project has paused until wider Council work is progressed:
  - What is tolerable level of flood risk?
  - Could this vary across the city?
  - What would changing land use look like?



# Summary

- Understanding flood responses prior to an event so works were approved in a timely manner
- Confidence that these responses fit within an adaptive management plan
- Demonstration of “theory into practice” which is informing wider debate
- More detail in paper on:
  - Integrating information on other hazards
  - Hydraulic modelling increments of climate change
  - Usefulness of extreme climate change scenarios



© Copyright Jacobs  
May 29, 2018

**JACOBS**<sup>®</sup>

[www.jacobs.com](http://www.jacobs.com) | worldwide