

Improving Your Watershed Plans with Maps and Community Involvement



Daniel Nutsford
daniel.nutsford@abley.com

**Insightful solutions.
Empowering advice.**



Our Watershed Plans

A detailed review of the 10 integrated watershed catchments throughout the Auckland region

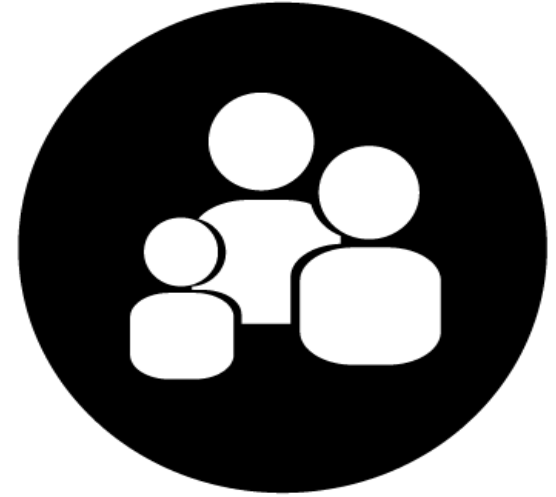




**Community
Groups**



Maps



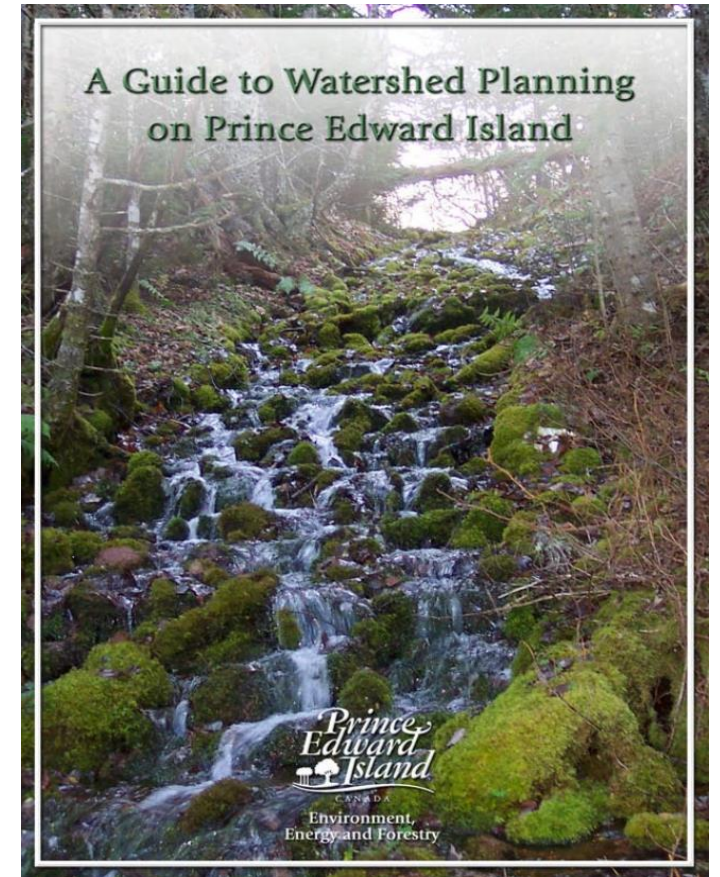
**General
Public**

Watershed Plans (WPs)

- ***Watershed:*** An area of land that drains or sheds into a receiving waterbody such as lake, river or harbour.
- ***Watershed Management:*** The process of implementing land use practices and water management practices within a watershed to protect and improve the quality of water and other natural resources.
- ***Watershed Management Planning:*** A planning process which forms a blueprint outlining how to best protect and improve natural resources within a watershed. Governments, local authorities, businesses and individuals are all part of the plan.

Community Driven Watershed Plans

- “...must be an *all-inclusive, community-driven* process designed to deal with the *issues* and *problems* in that watershed.”
- “...planning process must be *transparent* and *open to participation* by all interested parties in order to build community buy-in and support for the process and the management plan.”
- “...*communications strategy* is vital to keep residents *informed* and *up to date* throughout the planning process.”



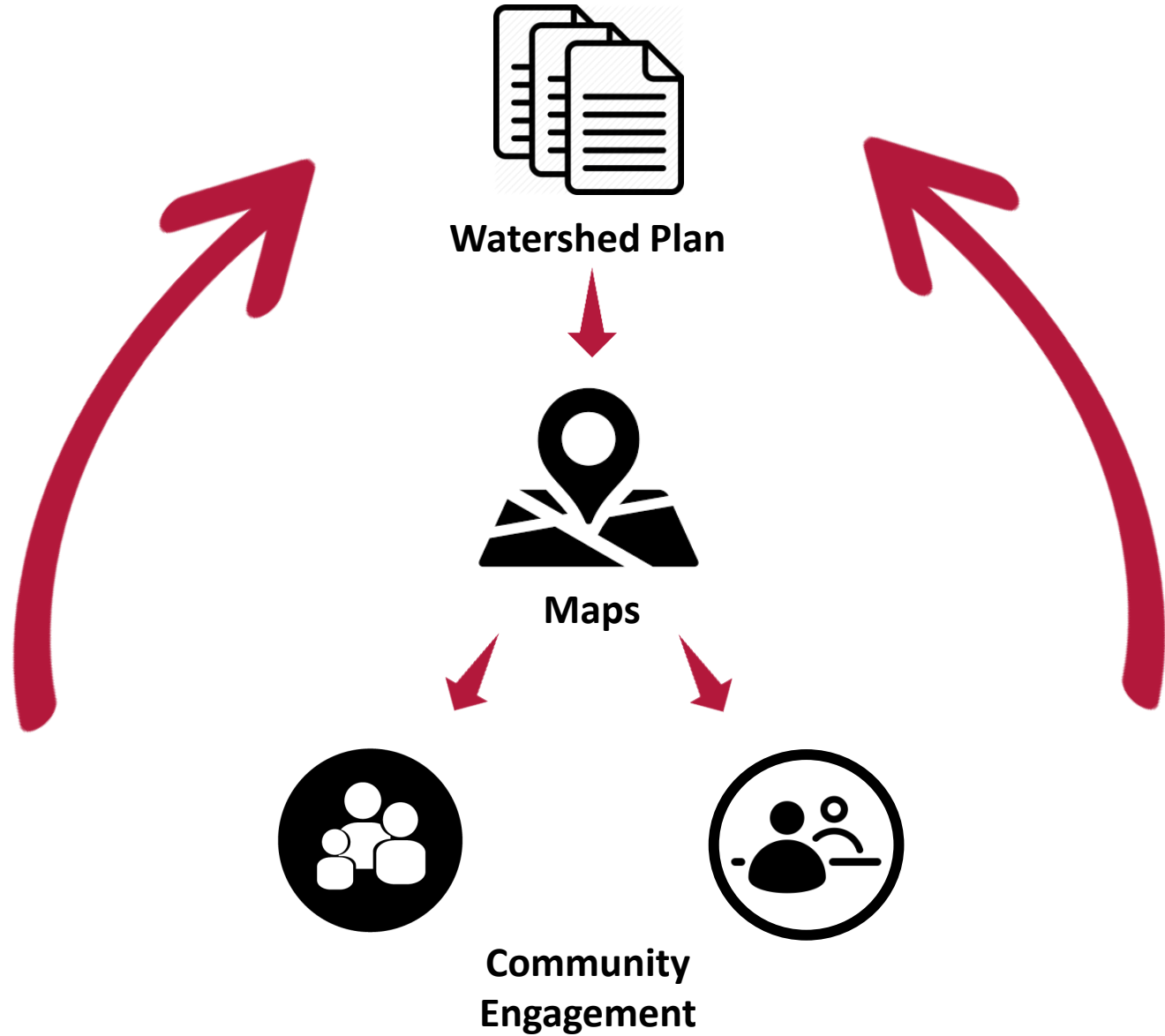
A Guide to Watershed Planning on Prince Edward Island - 2016

Why Use Maps?

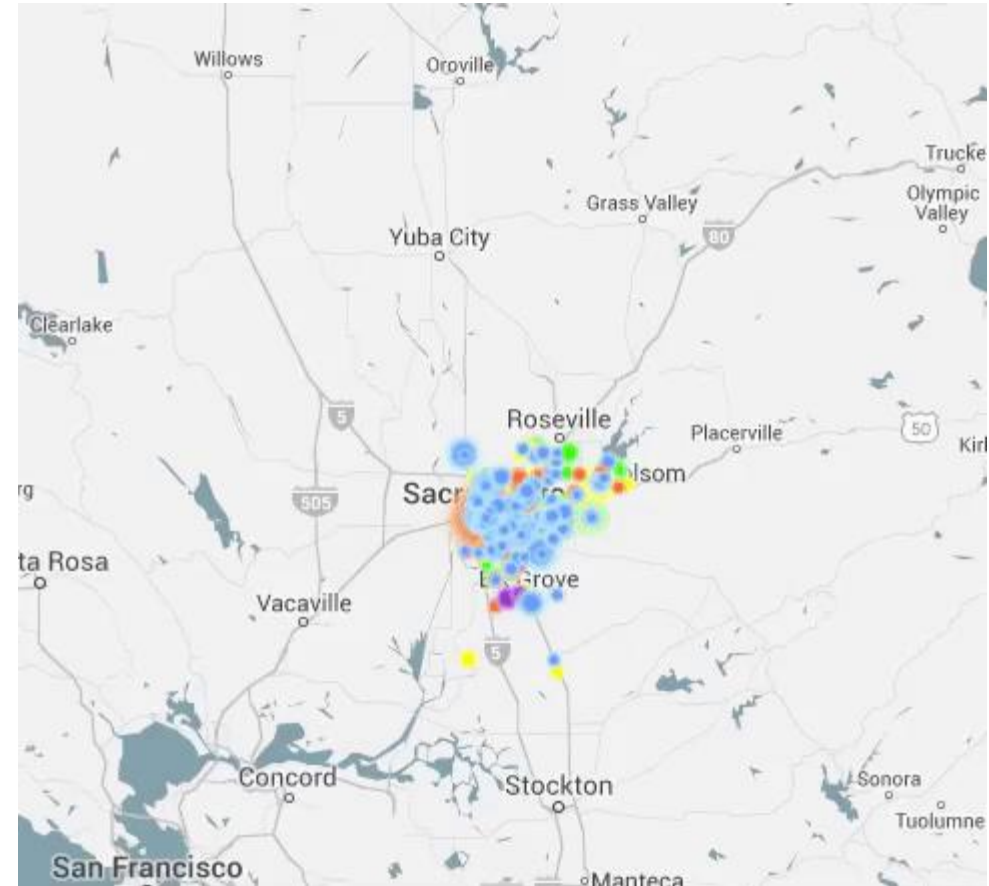
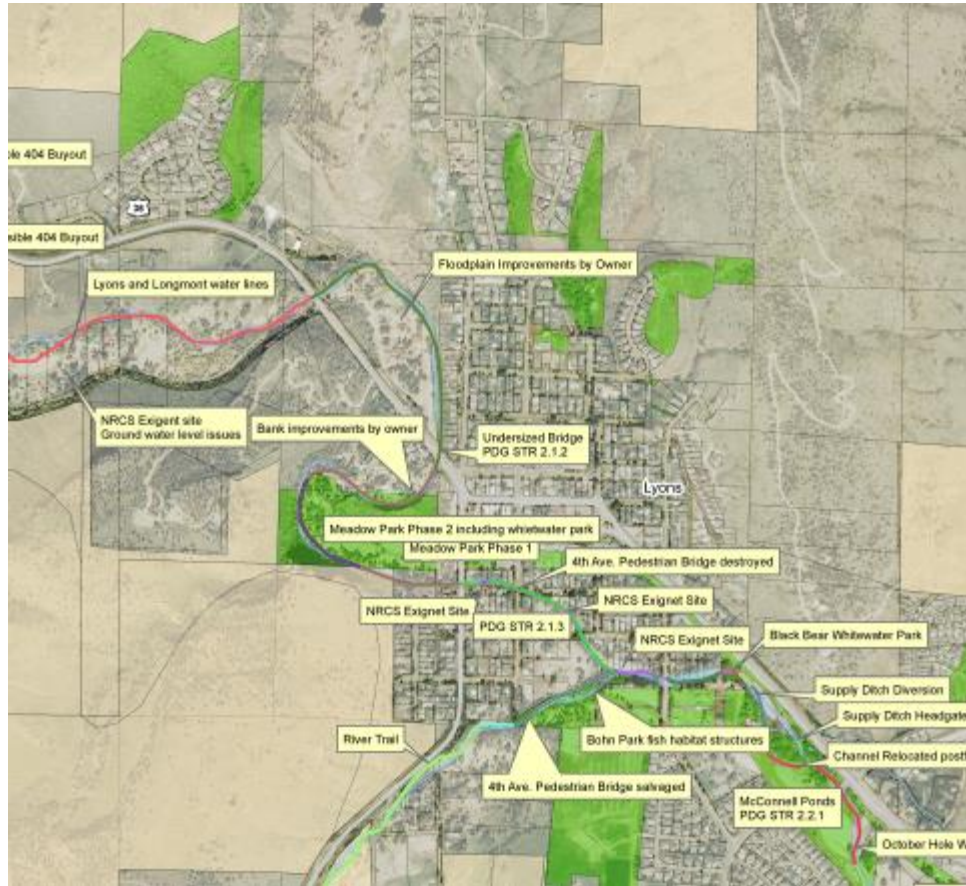
- Watershed plans are spatial
 - Different *things* happen in different *places*
 - The *where* is just as important as the *what*

Why Use Maps?

- Maps are effective
 - Effectively *view* and *share spatial data*
 - Effectively *summarise* information within a *spatial context*
 - Effectively highlight *spatial* and *temporal trends*
 - Effectively *engage* with an *audience*



Maps: Static vs Interactive



Static Maps

- Difficult to update, making data currency problematic
- Difficult or expensive to distribute
- Can only contain a limited amount of information
- Technical content can be difficult to consume
- Often paper based resulting in multiple copies with different versions
- Difficult to collate feedback

Interactive Maps

- Interactive and engaging
- Can hold a lot of information in one place
- Easy to keep up-to-date with automated workflows
- Suitable platform for temporal mapping
- Integrate with connected devices (IoT)
- Easily Incorporate 3rd party data in a variety of formats

Demos

Summary

- Community involvement is a key component of the watershed management planning process
- Modern interactive maps can be used to facilitate community involvement
- Modern online maps can be used alongside emerging technologies which are already changing the way things are done

Questions?

Daniel Nutsford
daniel.nutsford@abley.com

The logo for Abley, featuring a stylized 'A' icon followed by the word 'abley' in a lowercase, sans-serif font.

Demos

- <https://geomapspublic.aucklandcouncil.govt.nz/viewer/index.html>
- <http://interpret.maps.arcgis.com/apps/Cascade/index.html?appid=6654888428094fecb5ad1d07f570f84f>
- <http://interpret.maps.arcgis.com/apps/opsdashboard/index.html#/0c5904bd838f4bbfbe7db764df2fe05c>
- <https://survey123.arcgis.com/share/bf153a3aa2094b7abb3a5dfd6f0439e9>
- <http://interpret.maps.arcgis.com/apps/opsdashboard/index.html#/5cdbd702f32e493f94a30579865fd8ee>