

WaSH in the Pacific: Sustainability, working politically and inclusion

Angela Wilton
Director of Partnerships
Oxfam New Zealand



OXFAM

Agenda

- What is WaSH?
- WaSH as a human right
- WaSH as a ‘wicked problem’
- Oxfam and WaSH in PNG
- Ways forward in complex contexts: sustainability, working politically and inclusiveness



What is WaSH?

Water – access to safe water for drinking, free from chemical and biological pollutants

Sanitation – preventing human contact with hazards of wastes by proper treatment and disposal of the waste (eg toilets!)

Hygiene – focused on public health and reducing transmission of faecal-oral diseases

Sustainable Development Goals



GOAL 6

ENSURE AVAILABILITY AND SUSTAINABLE MANAGEMENT
OF WATER AND SANITATION FOR ALL

SUSTAINABLE DEVELOPMENT GOALS

More at sustainabledevelopment.un.org/sdgsproposal



OXFAM



700 million globally
no access to
improved drinking
water

2.4 billion globally
no access to
improved
sanitation

70% global water
usage =
agriculture

Global aid
investments
insufficient

Diarrhoea &
water-borne
diseases
(cholera, typh
malaria)

Climate change
affecting
supply

Tech
expe

WICKED PROBLEM

Community buy-
behavioural
change

Econ
on productivi
and health

women, elderly,
PWD, rural, and
indigenous
communities

communities,
businesses,
governments &
donors coordinating

in for
infrastructure

Women
disproportionately
bear burden

School
attendance (esp
girls)

ergy
ation &
ial
ses

Fragmented govt
stakeholders –
health, education,
environment,
sanitation

Oxfam's long history with WaSH

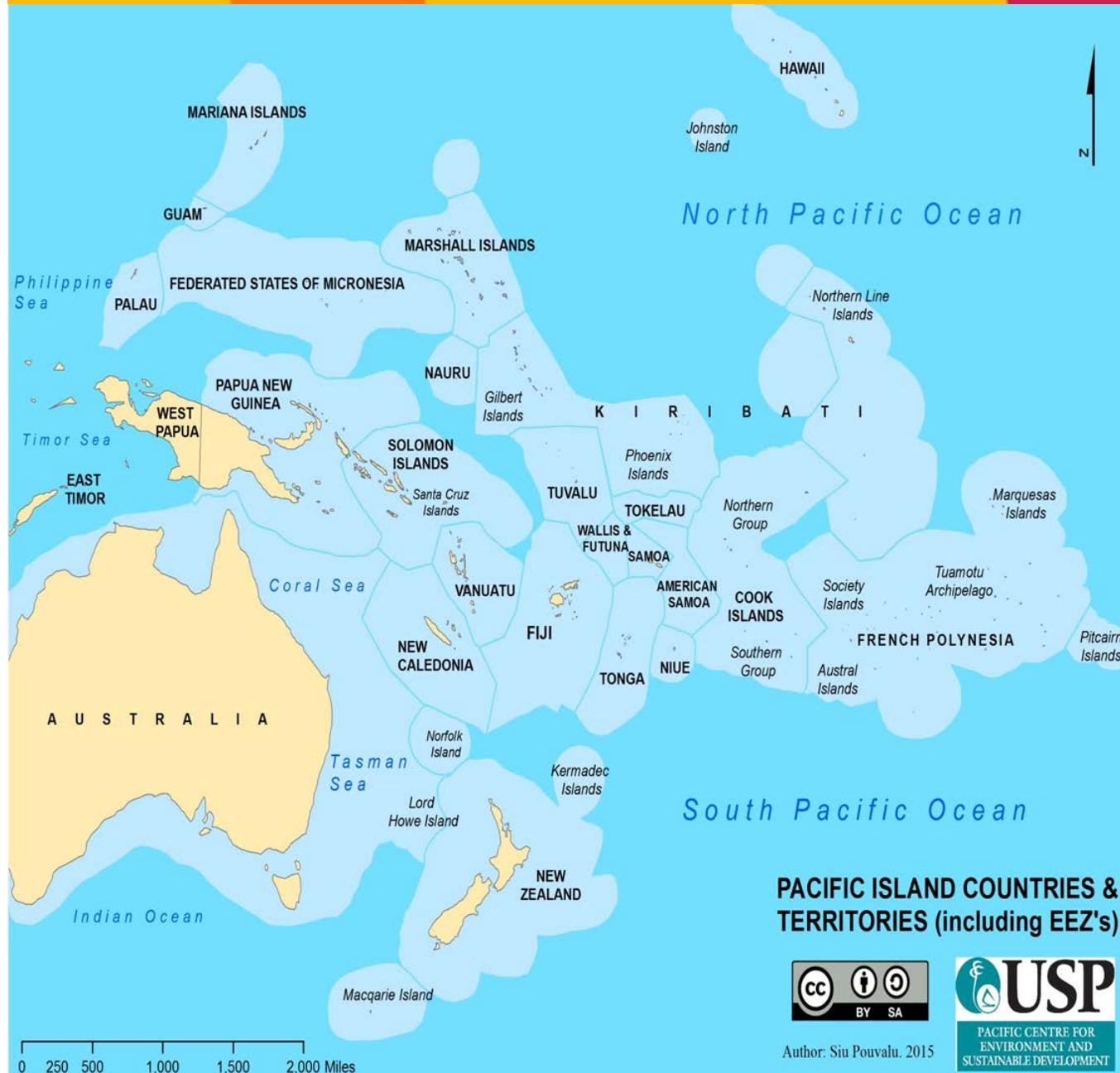


Photograph: Winifred Coate at Zerqa, 1963. Oxford, Bodleian Library, MS. Oxfam

Where is the most difficult place in the world to access clean water?

**Papua New
Guinea**

The Pacific – Great Ocean States



- United States** 11 351 000
- France** 11 035 000
- Australia** 8 505 348
- Russia** 7 566 673
- United Kingdom** 6 805 586
- New Zealand** 6 682 503
- Indonesia** 6 159 032
- Canada** 5 599 077
- Japan** 4 479 388
- Chile** 3 675 279
- Brazil** 3 660 955
- Kiribati** 3 441 810
- Mexico** 3 177 593
- Federated States of Micronesia** 2 996 419
- Denmark** 2 551 238
- Papua New Guinea** 2 402 288
- Norway** 2 385 178
- India** 2 305 143
- Marshall Islands** 1 990 530
- Portugal** 1 727 408
- Philippines** 1 590 780
- Solomon Islands** 1 589 477
- South Africa** 1 535 538
- Seychelles** 1 336 559
- Mauritius** 1 284 997
- Fiji** 1 282 978

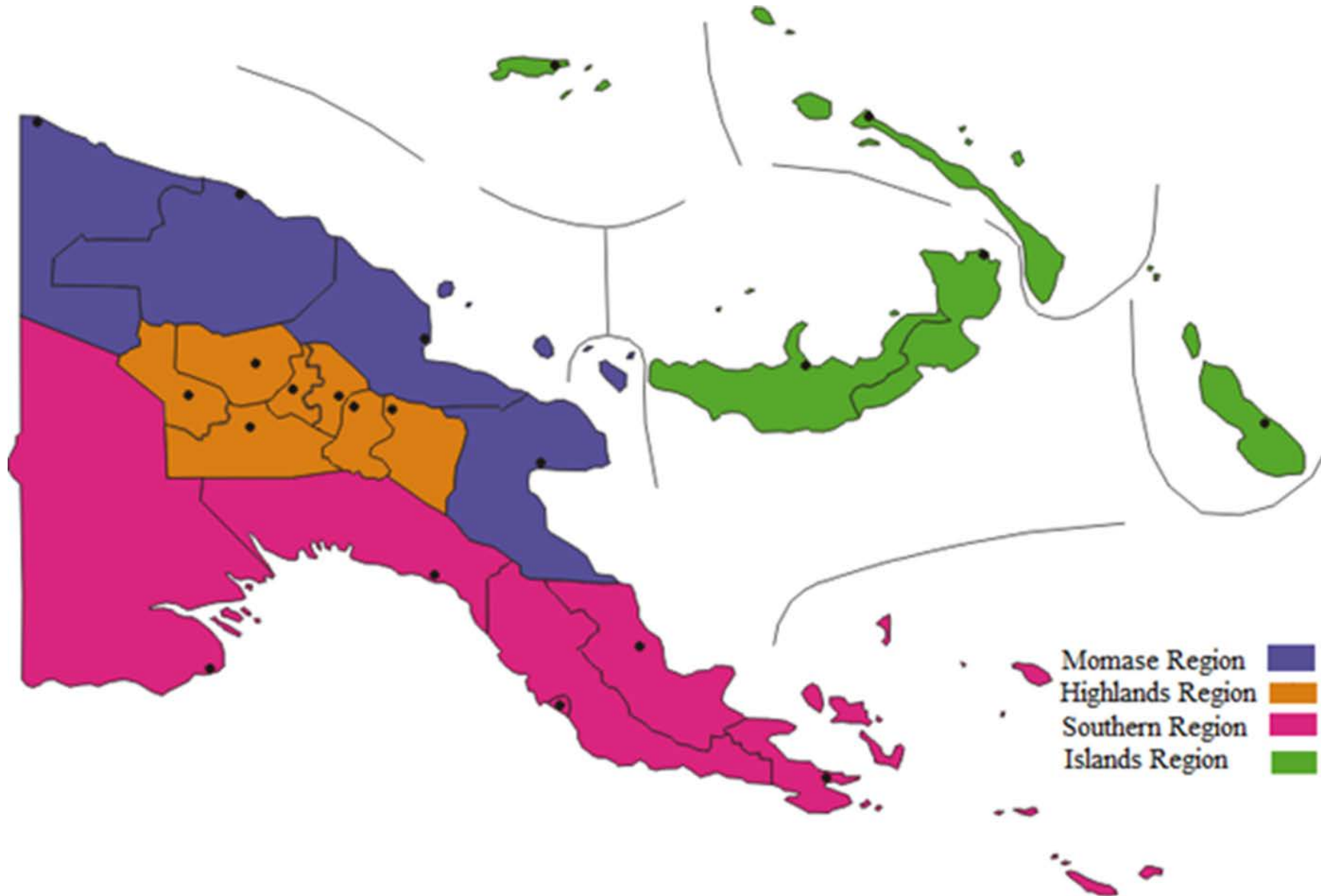
PACIFIC ISLAND COUNTRIES & TERRITORIES (including EEZ's)



Author: Siu Pouvalu, 2015



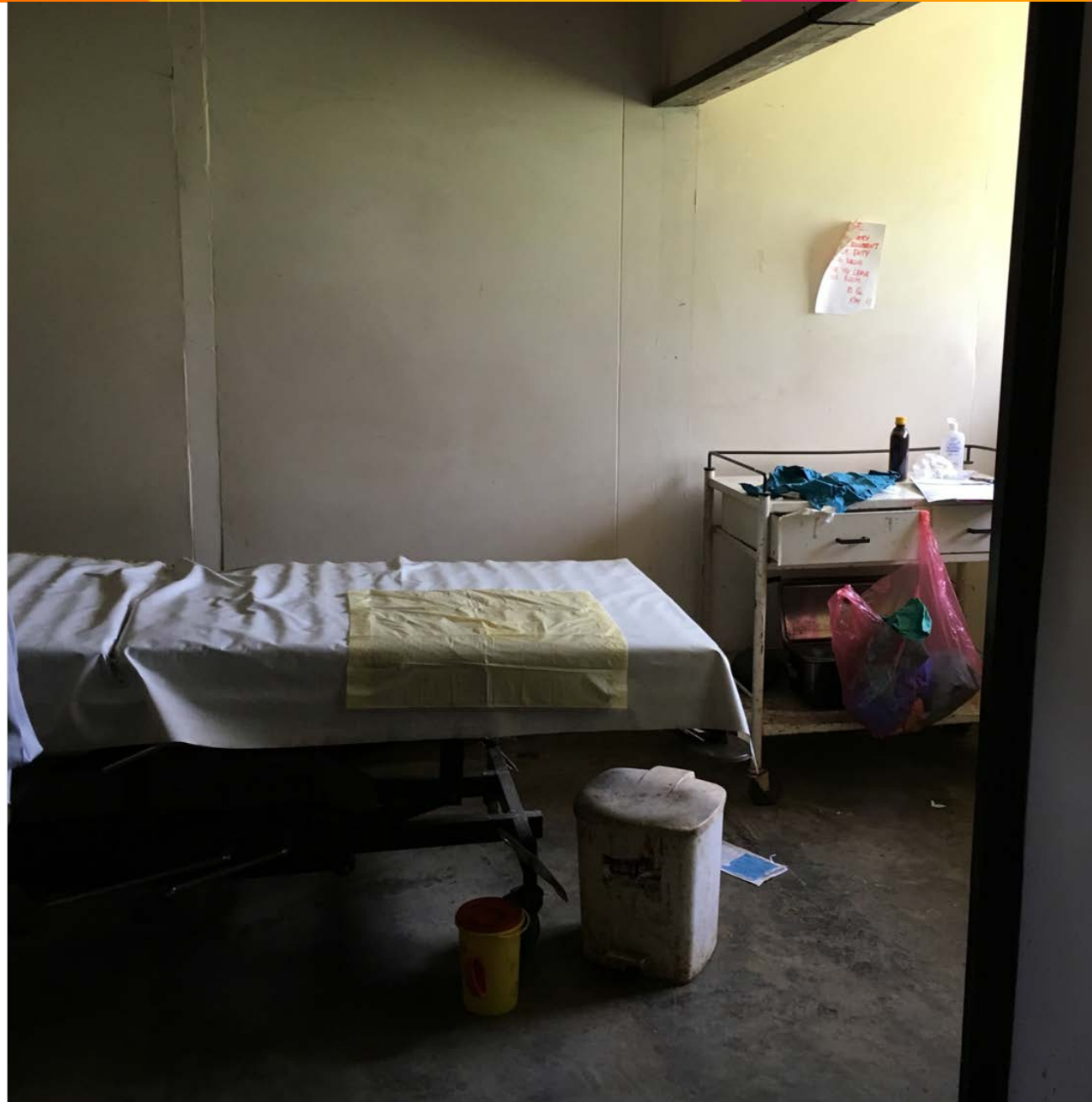
WaSH in rural PNG



WaSH in rural PNG



WaSH in rural PNG






Is access to improved water and sanitation in
PNG getting....

C. Worse

Since 2011, Oxfam has improved access to clean water in 22 schools and 13 health centres, facilities used by 96,500.*

And in 2017, we're hoping to provide clean water to 32,000 more people.





“Life is much easier now, we are not so tired as when we had to walk long distances to collect water.”

Women’s group*, Siredonsi

*Not pictured

In 2017, Oxfam is working with local partner ATPProjects to support WaSH in 6 rural schools and 6 rural health centres. We will reach approximately 32,000 people:

- Installing water tanks
- Constructing toilets
- Conducting training on hygiene, menstruation, sexual health and HIV&AIDS



A hole dug for the latrines at Watabung Primary School



Freshly dug pits where toilets will be built

AT Project's locally-made latrines











..... is something missing?



Key considerations

1. Sustainability is critical

How do we address
ongoing maintenance
and repair?

Are there other
community-level
issues?



2. Working politically is critical

- Engage with local authorities – District MPs, Provincial Health Authorities, District Health Officials, Environmental Officers, and Education Authorities
 - Advocacy and influencing
 - Seeking co-contributions
 - Capacity building in software and hardware

Key considerations



3. Inclusiveness is critical – How do we ensure water resources are accessible *for all*?



Figure 6: Brokering better relationships to support inclusive WASH

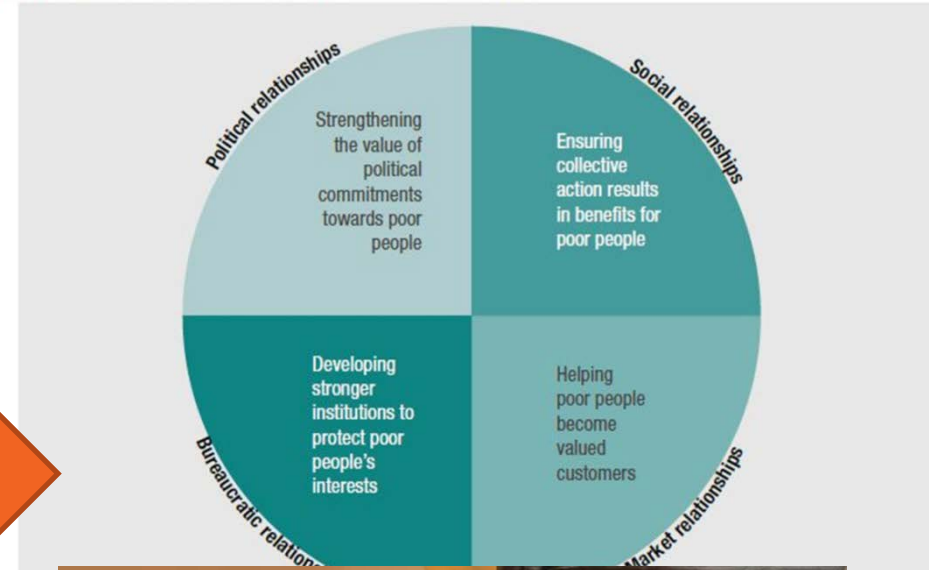


Source: Authors

Engage with complexity



Figure 6: Brokering better relationships to support inclusive WASH



Source: /

GOAL 6

ENSURE AVAILABILITY AND SUSTAINABLE MANAGEMENT OF WATER AND SANITATION FOR ALL

SUSTAINABLE DEVELOPMENT GOALS
More at sustainabledevelopment.un.org/sdgsproposal



Questions?

