

## National Inspection Plan

---

*Domestic Waste Water Treatment Systems:  
Inspection Data Report  
1st July 2013 – 31st December 2014*

## ENVIRONMENTAL PROTECTION AGENCY

The Environmental Protection Agency (EPA) is responsible for protecting and improving the environment as a valuable asset for the people of Ireland. We are committed to protecting people and the environment from the harmful effects of radiation and pollution.

### The work of the EPA can be divided into three main areas:

**Regulation:** *We implement effective regulation and environmental compliance systems to deliver good environmental outcomes and target those who don't comply.*

**Knowledge:** *We provide high quality, targeted and timely environmental data, information and assessment to inform decision making at all levels.*

**Advocacy:** *We work with others to advocate for a clean, productive and well protected environment and for sustainable environmental behaviour.*

### Our Responsibilities

#### Licensing

We regulate the following activities so that they do not endanger human health or harm the environment:

- waste facilities (*e.g. landfills, incinerators, waste transfer stations*);
- large scale industrial activities (*e.g. pharmaceutical, cement manufacturing, power plants*);
- intensive agriculture (*e.g. pigs, poultry*);
- the contained use and controlled release of Genetically Modified Organisms (*GMOs*);
- sources of ionising radiation (*e.g. x-ray and radiotherapy equipment, industrial sources*);
- large petrol storage facilities;
- waste water discharges;
- dumping at sea activities.

#### National Environmental Enforcement

- Conducting an annual programme of audits and inspections of EPA licensed facilities.
- Overseeing local authorities' environmental protection responsibilities.
- Supervising the supply of drinking water by public water suppliers.
- Working with local authorities and other agencies to tackle environmental crime by co-ordinating a national enforcement network, targeting offenders and overseeing remediation.
- Enforcing Regulations such as Waste Electrical and Electronic Equipment (WEEE), Restriction of Hazardous Substances (RoHS) and substances that deplete the ozone layer.
- Prosecuting those who flout environmental law and damage the environment.

#### Water Management

- Monitoring and reporting on the quality of rivers, lakes, transitional and coastal waters of Ireland and groundwaters; measuring water levels and river flows.
- National coordination and oversight of the Water Framework Directive.
- Monitoring and reporting on Bathing Water Quality.

### Monitoring, Analysing and Reporting on the Environment

- Monitoring air quality and implementing the EU Clean Air for Europe (CAFE) Directive.
- Independent reporting to inform decision making by national and local government (*e.g. periodic reporting on the State of Ireland's Environment and Indicator Reports*).

### Regulating Ireland's Greenhouse Gas Emissions

- Preparing Ireland's greenhouse gas inventories and projections.
- Implementing the Emissions Trading Directive, for over 100 of the largest producers of carbon dioxide in Ireland.

### Environmental Research and Development

- Funding environmental research to identify pressures, inform policy and provide solutions in the areas of climate, water and sustainability.

### Strategic Environmental Assessment

- Assessing the impact of proposed plans and programmes on the Irish environment (*e.g. major development plans*).

### Radiological Protection

- Monitoring radiation levels, assessing exposure of people in Ireland to ionising radiation.
- Assisting in developing national plans for emergencies arising from nuclear accidents.
- Monitoring developments abroad relating to nuclear installations and radiological safety.
- Providing, or overseeing the provision of, specialist radiation protection services.

### Guidance, Accessible Information and Education

- Providing advice and guidance to industry and the public on environmental and radiological protection topics.
- Providing timely and easily accessible environmental information to encourage public participation in environmental decision-making (*e.g. My Local Environment, Radon Maps*).
- Advising Government on matters relating to radiological safety and emergency response.
- Developing a National Hazardous Waste Management Plan to prevent and manage hazardous waste.

### Awareness Raising and Behavioural Change

- Generating greater environmental awareness and influencing positive behavioural change by supporting businesses, communities and householders to become more resource efficient.
- Promoting radon testing in homes and workplaces and encouraging remediation where necessary.

### Management and structure of the EPA

The EPA is managed by a full time Board, consisting of a Director General and five Directors. The work is carried out across five Offices:

- Office of Climate, Licensing and Resource Use
- Office of Environmental Enforcement
- Office of Environmental Assessment
- Office of Radiological Protection
- Office of Communications and Corporate Services

The EPA is assisted by an Advisory Committee of twelve members who meet regularly to discuss issues of concern and provide advice to the Board.



*Protecting Our Water and Our Health*

# National Inspection Plan

---

## Domestic Waste Water Treatment Systems

Inspection Data Report 1<sup>st</sup> July 2013 - 31<sup>st</sup> December 2014

**Environmental Protection Agency**

An Ghníomhaireacht um Chaomhnú Comhshaoil  
Johnstown Castle Estate  
Wexford  
Ireland

[www.epa.ie](http://www.epa.ie)

© Environmental Protection Agency 2015

## **DISCLAIMER**

Although every effort has been made to ensure the accuracy of the material contained in this publication, complete accuracy cannot be guaranteed. Neither the Environmental Protection Agency nor the author(s) accept any responsibility whatsoever for loss or damage occasioned or claimed to have been occasioned, in part or in full, as a consequence of any person acting, or refraining from acting, as a result of a matter contained in this publication. All or part of this publication may be reproduced without further permission, provided the source is acknowledged.

### **NATIONAL INSPECTION PLAN Domestic Waste Water Treatment Systems**

**Inspection Data Report 1<sup>st</sup> July 2013 – 31<sup>st</sup> December 2014**

2015

Published by the Environmental Protection Agency, Ireland

ISBN 978-1-84095-615-3

*Cover photograph courtesy of Ruth Little, EPA*

## Table of Contents

Key Insights and Data for 1 <sup>st</sup> July 2013 – 31 <sup>st</sup> December 2014 .....	i
1. Introduction .....	1
2. Inspection Strategy .....	2
2.1 Inspection Activities .....	2
2.2 Inspection Findings .....	4
3. Assessment of Findings .....	10
4. EPA Supervision.....	11
5. Current and Future Developments .....	12
Appendix A: Data Tables .....	A.1

**Visit the EPA website for more information on domestic waste water**

[www.epa.ie/whatwedo/advice/wastewater](http://www.epa.ie/whatwedo/advice/wastewater)



## Key Insights and Data for 1<sup>st</sup> July 2013 – 31<sup>st</sup> December 2014

### Inspections

- 1559 first time inspections carried out
- Six local authorities did not complete the target number of inspections
- 20 local authorities met or exceeded their target
- Five re-inspections carried out at the request of the home owner
- 162 verification inspections carried out on completed works
- 316 unregistered sites were inspected

### Advisory Notices

- 717 Advisory notices were issued - A decrease in failure rate from 48% to 46%
- Four Advisory notices were confirmed following a re-inspection
- 477 Advisory notices have been closed to date
- 75 Time extensions were granted
- 321 Advisory notices are open beyond their remedial date and do not have a time extension in place
- 217 (68%) of these open advisory notices relate to systems that are considered to pose a risk to the environment

### Findings

- 25% of all systems inspected failed due to lack of de-sludging
- 23% of all systems inspected failed due to operation and maintenance issues
- 16% of all systems inspected failed due to unlicensed discharges to surface water/ inadequate soil thickness, which are difficult and/or expensive to correct
- 12% of all systems inspected failed due to leakage from the system, which may require a replacement of the system
- 11% of all systems inspected failed due to clean water entering the system, which may flush solids out to the percolation area
- 26% of all systems inspected also had a private well on-site, of which 51% failed the inspection





# 1. Introduction

The Environmental Protection Agency (EPA) published the first National Inspection Plan for Domestic Waste Water Treatment Systems in February 2013 and recently published the [2<sup>nd</sup> Plan](#) for the period 2015-2017. The aim of the Plan is to protect human health and water from the risks posed by domestic waste water treatment systems by using a two-strand approach of education and awareness strategies linked with a risk-based inspection process.

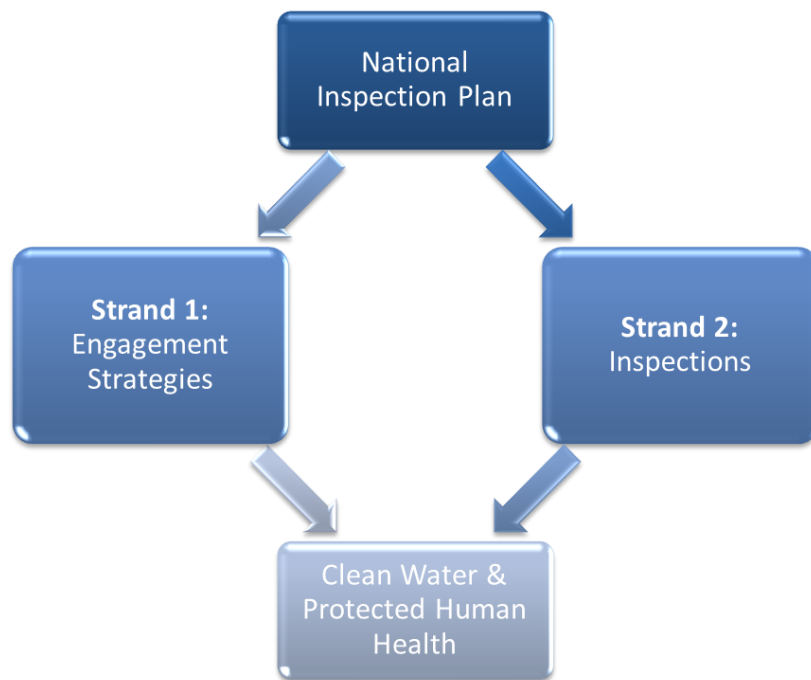


Figure 1: Two-strand Approach

In conjunction with engagement activities, the National Inspection Plan 2013 required a minimum of 1,000 inspections to be carried out by local authorities over a twelve month period starting the 1<sup>st</sup> July 2013 and a further 500 inspections during the period 1<sup>st</sup> July 2014 to 31<sup>st</sup> December 2014.

In February 2015, the EPA published a [review of the implementation of the Plan](#) during its first cycle, i.e. the period from 1<sup>st</sup> July 2013 to 30<sup>th</sup> June 2014.

The purpose of this report is to provide an update to include the data from the inspections carried out from 1<sup>st</sup> July 2014 to 31<sup>st</sup> December 2014. Therefore, this report covers the period 1<sup>st</sup> July 2013 to 31<sup>st</sup> December 2014.

The EPA will continue to publish inspection data in periodic reports.

## 2. Inspection Strategy

An inspection under the National Inspection Plan checks that a domestic wastewater treatment system is fit for purpose and that it does not pose a risk to human health or the environment. If a system fails an inspection then an advisory notice is issued. This specifies what is wrong and what measures need to be taken to fix the problem.

This report reviews all inspections carried out from the 1<sup>st</sup> July 2013 to the 31<sup>st</sup> December 2014 that have been submitted into the online data management system, known as the Domestic Wastewater Application (DWWA), by the 28<sup>th</sup> July 2015.

### 2.1 Inspection Activities

An analysis of the inspection type statistics on a national level gives the following information:

<b>1559</b>	<b>The number of first time inspections carried out</b>
<b>5</b>	<b>The number of re-inspections carried out on request of the homeowner</b>
<b>162</b>	<b>The number of verification inspections<sup>1</sup> carried out to ensure that the required remedial works have been completed prior to the closing off of the advisory notice</b>
<b>316</b>	<b>The number of unregistered sites that were inspected</b>

Data on inspection types

Table 1 shows the progress of each county towards meeting the inspection targets, with the failure rate at the time of the inspection.

---

<sup>1</sup> Verification inspections are carried out where the local authority needs to inspect the site to ensure that the measures have been taken. Verification inspections are not required in all cases.

County	Target No. of Inspections 01/07/2013 – 31/12/2014	Total Submitted Inspections <sup>2</sup>	Total No. Systems Passed Inspection	Total No. Systems Failed Inspection
Carlow	20	20	13	7
Cavan	72	79	41	38
Clare	81	88	61	27
Cork	145	146	67	79
Donegal	121	122	76	46
Dublin	21	30	15	15
Galway	147	152	130	22
Kerry	86	86	36	50
Kildare	37	41	36	5
Kilkenny	45	45	17	28
<i>Laois</i> <sup>3</sup>	40	39	18	21 <sup>4</sup>
<i>Leitrim</i> <sup>5</sup>	45	31	13	18
Limerick	73	78	25	53
Longford	25	25	16	9
Louth	28	28	12	16
Mayo	71	71	28	43
Meath	58	61	26	35
Monaghan	50	51	31	20
Offaly	25	26	14	12
Roscommon	50	50	18	32
<i>Sligo</i>	40	38	14	24
<i>Tipperary</i>	56	54	29	25
<i>Waterford</i>	27	16	14	2
Westmeath	21	29	24	5
Wexford	79	98	42	56
<i>Wicklow</i>	38	31	13	18
Total	1501	1559	842	717

Table 1: Progress on meeting inspection targets and failure rates, by county

<sup>2</sup> Data includes all first time inspections carried out by the 31/12/2014 and submitted to DWWA by 28/07/15.

<sup>3</sup> Local authorities operating in the counties *in italics* did not complete the required number of inspections within the 18 month period.

<sup>4</sup> Initially 22 systems were deemed to have failed the inspection, however, following re-inspection of one system the advisory notice was cancelled and the system deemed to be compliant.

<sup>5</sup> Leitrim have in 2015 made up the shortfall in inspection numbers

## 2.2 Inspection Findings

Summary detail on inspection compliance<sup>6</sup> is presented below and compliance data for each local authority area according to risk category is presented in Table A.1. The advisory notice status by local authority is shown in Table A.2.

<b>717</b>	<b>Systems failed the inspection and received an advisory notice</b>
<b>139</b>	<b>Unregistered sites failed the inspection</b>
<b>4</b>	<b>Advisory notices were confirmed following a re-inspection</b>
<b>1</b>	<b>Advisory notice was cancelled following a re-inspection and the system was deemed to be compliant</b>
<b>477</b>	<b>Systems failed the inspection but have implemented necessary measures for closure of the advisory notice to date</b>
<b>1319</b>	<b>Systems are now compliant</b>
<b>75</b>	<b>Time extensions were granted to homeowners to allow additional time for completion of works</b>
<b>240</b>	<b>Advisory notices remain open</b>

Data on inspection compliance

### 2.2.1. Main Findings

As has been found previously, the most common reasons for failure related to de-sludging and/or operation and maintenance issues (Figure 2). These issues are related to the behaviour of the householder rather than being faults with the treatment system. The works required to remedy these issues do not qualify for grant assistance.

---

<sup>6</sup> Data from advisory notices closed as and from the 28<sup>th</sup> July 2015.

<b>25%</b>	Of all systems inspected failed due to the lack of de-sludging
<b>35%</b>	Of the failures relate to unlicensed discharges to surface water/inadequate soil thickness, which may require significant works to remedy
<b>25%</b>	Of the failures have issues with clean water entering the system, which may flush out the system but should be easily remedied.
<b>35%</b>	Of post-2000 secondary treatment systems failed the inspection
<b>69%</b>	Of pre-1964 septic tanks inspected are considered to pose a risk to human health and the environment
<b>51%</b>	Of inspected systems with a private well on-site failed the inspection

Data on failures as a result of the inspection

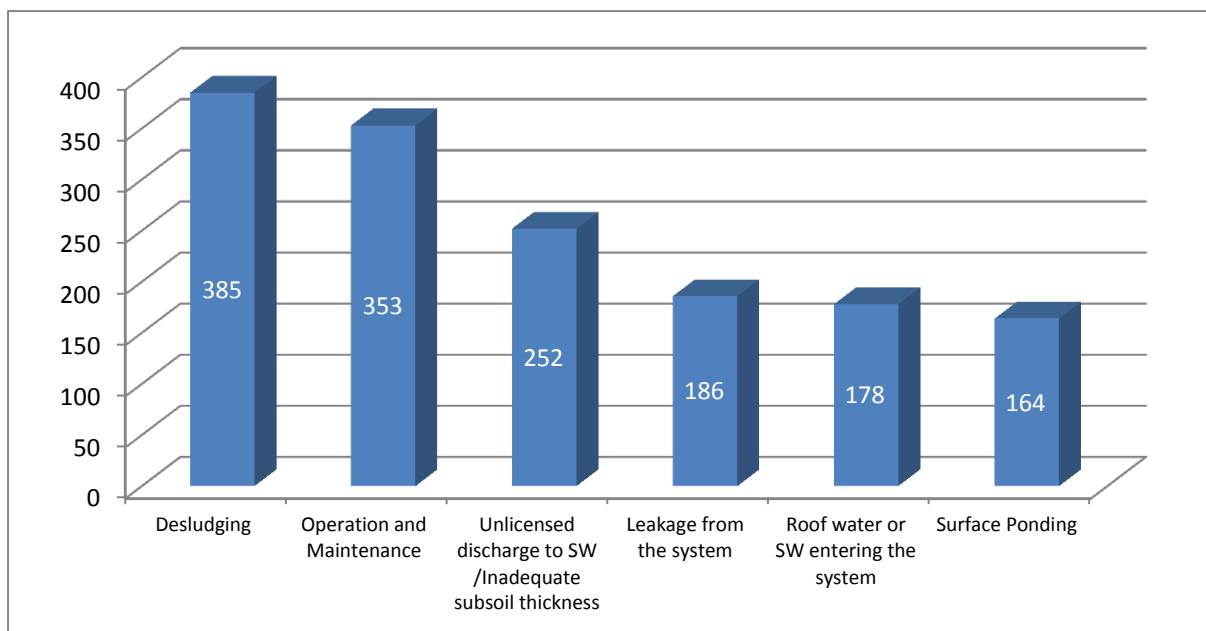


Figure 2: Reasons for failure of inspections of DWWTS

### 2.2.2. Type and Age of Systems

The type and age of the treatment systems inspected were examined in order to determine if they are factors affecting the satisfactory working of a system (Figure 3 and Table A.3):

- Pre-1964 septic tanks have a very high failure rate (63%), which is not surprising as they were installed prior to the introduction of planning regulations and their age far exceeds the currently recommended system lifespan of thirty years.
- The majority of post-2000 secondary treatment systems failures are attributed to operation and maintenance issues (58%), which may be expected as these systems require more servicing than a simple septic tank (Figure 4).

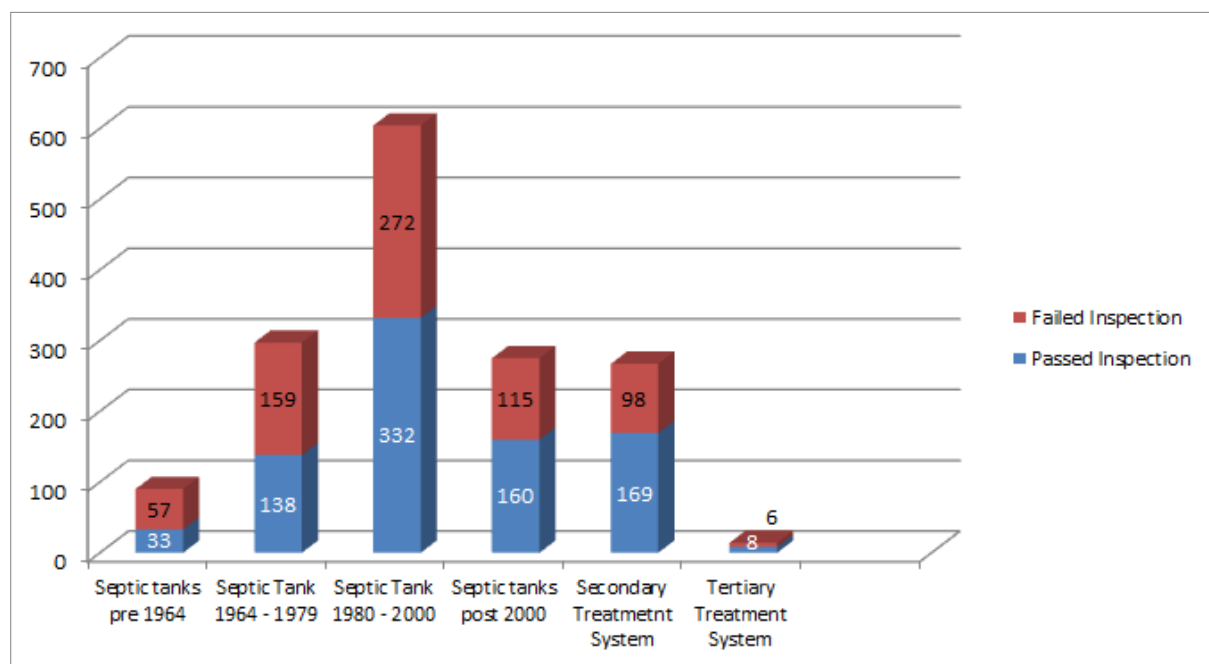


Figure 3: System compliance associated with the Age and Type of system

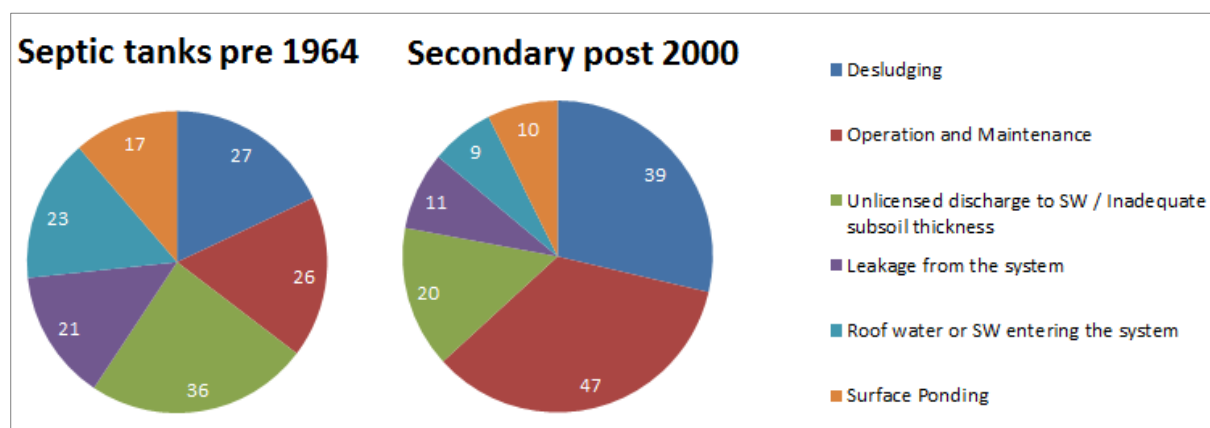


Figure 4: Reasons for non-compliance for pre-1964 septic tanks and post-2000 secondary treatment systems (no. of failed systems)

### 2.2.3. Water Supply

For 26 per cent of the systems inspected (Figure 5 and Table A.4), the water supply to the connected property is from a private well. 51% of the sites inspected with a private well, failed the inspection. This represents a higher failure rate than the nation average of 46% which is of concern because leakage from a wastewater treatment system poses a threat to nearby wells. Leakage was found to be an issue in nine per cent of the inspected sites with a private well (Figure 6).

[Guidance on protecting wells](#) has been developed by the EPA in conjunction with the Health Service Executive (HSE); this information is being made available to householders where during an inspection it has become known that there is a private well on-site. Inspectors will receive additional training from the EPA on the risks posed to private wells by septic tanks.

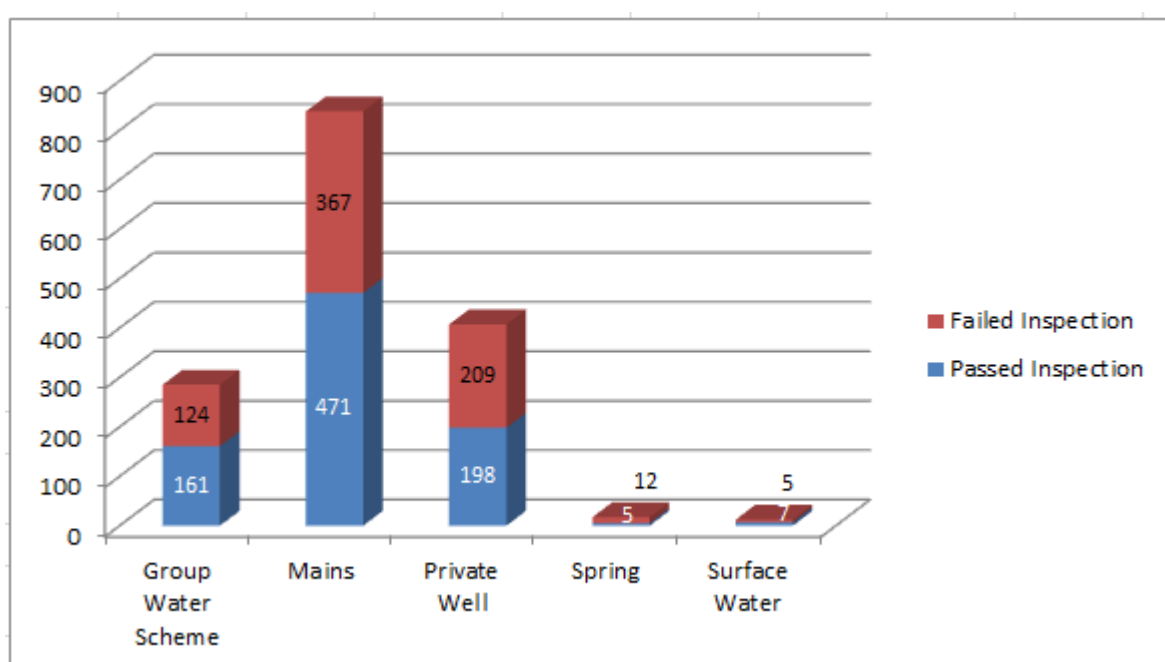


Figure 5: System compliance associated with Water Supply type

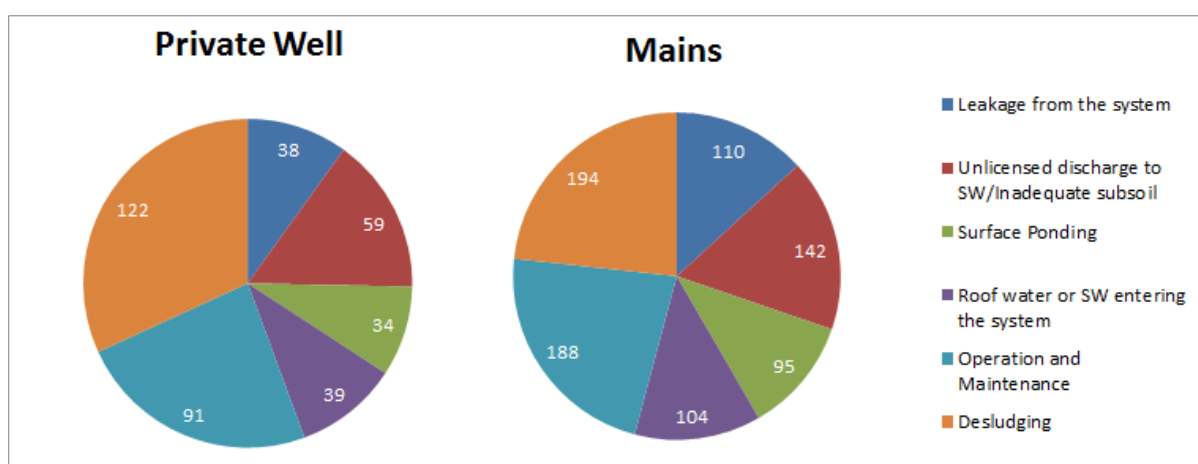


Figure 6: Reasons for non-compliance for private wells and mains water supplies (no. of failed systems)

#### 2.2.4. Follow-up actions

Advisory notices issued to householders by the local authority inspectors contain advice on the measures to be taken to remedy the problems identified during an inspection. Closing out advisory notices is an important aspect of the implementation of the Plan and can also be a resource-intensive activity for local authorities. To date<sup>7</sup> 477 advisory notices have been closed (Table A.5 in Appendix A) and 162 verification inspections have been undertaken on systems inspected during the first year to ensure that the appropriate measures have been put in place.

Each advisory notice may have a single measure or a number of measures associated with it therefore the number of measures does not tally with the number of advisory notices. Each measure specifies the works that need to be carried out to correct a failure identified in the advisory notice.

<b>1254</b>	<b>Corrective Measures arising from 717 Advisory Notices</b>	
<b>785</b>	<b>Corrective Measures Closed (satisfactorily)</b>	
<b>321</b>	<b>Open Measures where remedial date has passed and no time extension granted</b>	
	<b>217</b>	Measures where system thought to pose a risk to human health or the environment
	<b>145</b>	Measures where issues include the ceasing of an unlicensed discharge to surface water
	<b>32</b>	Measures relate to de-sludging of the tank using an authorised contractor and should be closed out as a priority

Data<sup>7</sup> on measures arising from advisory notices

In 308 cases (Figure 7 and in TableA.6 in the Appendix), one of the measures required was to 'de-sludge the tank using an authorised contractor and dispose of contents in accordance with all relevant national legislation'. Sixty eight percent or 217 systems, with open advisory notices where the remedial date has passed and no time extension is in place, are thought to pose a risk to human health or the environment.

---

<sup>7</sup> As of 28<sup>th</sup> July 2015



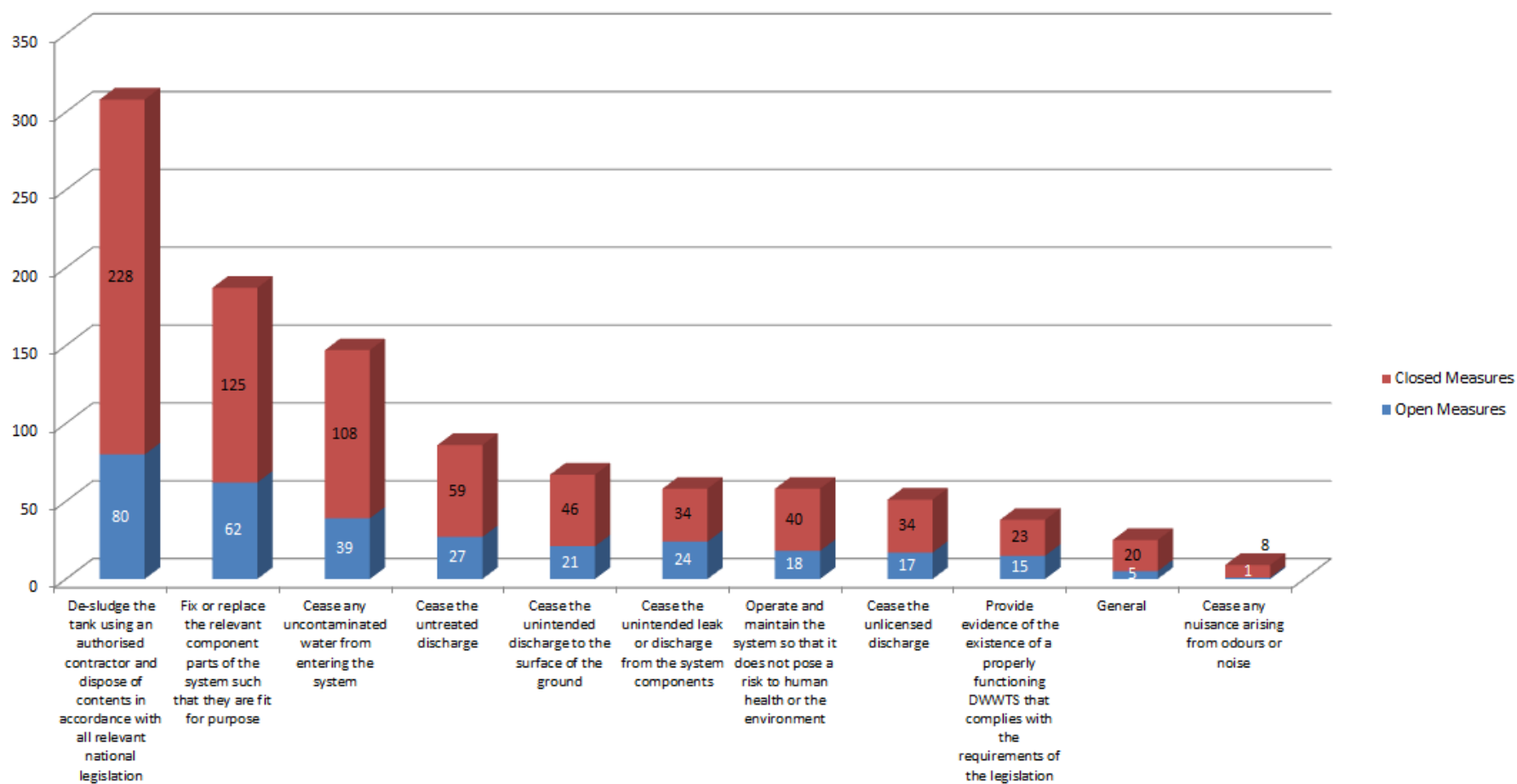


Figure 7: Status of Measures with Associated Advisory Notices, where remedial date has passed and no time extension requested

### 3. Assessment of Findings

Local authorities operating in six counties did not complete their inspection targets; 14 local authorities exceeded and 6 met their targets during the 18 month period under review.

The overall non-compliance rate is decreasing which is encouraging, from 53% in the [interim review](#) report to 48% in the [12 month report](#) and down to 46% in this current report.

However, the general trend is the same with lack of de-sludging and operation and maintenance issues being the main reason for failures. A reversal of this trend requires simple actions by homeowners rather than a structural change to the wastewater treatment system in many cases.

The number of compliant systems is increasing as works are being carried out by homeowners to rectify problems identified during the inspection. However, there are an increasing number of advisory notices that have yet to be closed out, some of which have received a time extension to facilitate works.

## **4. EPA Supervision**

In most cases, local authority implementation of the Plan is working well, however, the EPA is issuing directions, where required, to local authorities to make up the outstanding inspections in 2015; failure to comply may result in enforcement action.

Local authorities are being instructed to carry out an in-depth review into the open advisory notices to determine the reasons for their failure, and to close them out, where possible.

The EPA in its supervisory role will continue to monitor the results of the inspections and in particular the actions of the local authorities in carrying out inspections and closing out advisory notices. The Agency will carry out audits to ensure that the system is robust.

## 5. Current and Future Developments

A [new inspection Plan](#) covering the period 2015 – 2017 has been published and has continued the approach set in the 2013-2014 Plan, taking into account:

- The findings of the review of the implementation of the National Inspection Plan for 2013-2014;
- Experience gathered from the engagement activities and inspections; and
- Submissions received during the consultation period.

The EPA has advised all local authorities of issues relating to site selection; sludge management; advisory notices; human health and the environment risk assessment criteria and proposed EPA audits. It has established three NIECE<sup>8</sup> working groups to provide practical assistance and guidance to local authorities.

The management of domestic wastewater sludges and in particular the inadequate infrastructural provision, which was brought to light in a research project 'Management Options for Domestic Wastewater Treatment Sludges (2012-W-DS-9)' is a significant issue of concern for the EPA. It has highlighted this issue to policy makers and in its submission on Irish Water's Capital Investment Programme; draft Water Services Strategic Plan and more recently in the scoping of the Strategic Sludge Management Plan.

A significant future milestone will be the publication of the characterisation of water catchments under the Water Framework Directive (WFD) in 2017. This will allow the relative impact of domestic waste water treatment systems to be more fully understood in an Irish context and will further refine the targeting of and number of inspections for future plans.

---

<sup>8</sup> Network for Ireland's Environmental Compliance and Enforcement (NIECE)

## Appendix A: Data Tables

**Table A.1:** Inspections by Risk Zone from 1<sup>st</sup> July 2013 to the 31<sup>st</sup> December 2014

**Table A.2:** Advisory Notices and reasons for non-compliance as a result of inspections carried out from the 1<sup>st</sup> July 2013 to the 31<sup>st</sup> December 2014, by local authority

**Table A.3:** Non-compliance by reason according to age and type of treatment system, nationally

**Table A.4:** Non-compliance by reason according to water supply, nationally

**Table A.5:** Status of Advisory Notices issued from the 1<sup>st</sup> July 2013 to the 31<sup>st</sup> December 2014, by county on the 28<sup>th</sup> July 2015

**Table A.6:** Status of Measures with Associated Advisory Notices, where remedial date has passed (28<sup>th</sup> July 2015) and no time extension requested

**Table A.1:** Inspections by Risk Zone from 1<sup>st</sup> July 2013 to the 31<sup>st</sup> December 2014

Water Service Authority	Risk Zone	Total Submitted Inspections	Total No. Compliant Inspections	Total No. Non-Compliant Inspections	Total No. Open Advisory Notices	Total No. Closed Advisory Notices
<b>Carlow County Council</b>	1a Low	0	0	0	0	0
	1b Low and in ASI <sup>9</sup>	0	0	0	0	0
	2a Moderate	1	1	0	0	0
	2b Moderate and in ASI	0	0	0	0	0
	3a High	0	0	0	0	0
	3b High and in ASI	0	0	0	0	0
	4a Very High	19	12	7	1	6
	4b Very High and in ASI	0	0	0	0	0
	RNC Risk Not Calculated	0	0	0	0	0
	Unknown	0	0	0	0	0
	<b>TOTAL</b>	<b>20</b>	<b>13</b>	<b>7</b>	<b>1</b>	<b>6</b>
<b>Cavan County Council</b>	1a Low	3	3	0	0	0
	1b Low and in ASI	0	0	0	0	0
	2a Moderate	4	2	2	0	2
	2b Moderate and in ASI	0	0	0	0	0
	3a High	10	5	5	0	5
	3b High and in ASI	0	0	0	0	0
	4a Very High	61	30	31	4	27
	4b Very High and in ASI	1	1	0	0	0
	RNC Risk Not Calculated	0	0	0	0	0
	Unknown	0	0	0	0	0
	<b>TOTAL</b>	<b>79</b>	<b>41</b>	<b>38</b>	<b>4</b>	<b>34</b>
<b>Clare County Council</b>	1a Low	3	2	1	0	1
	1b Low and in ASI	16	13	3	1	2
	2a Moderate	5	2	3	1	2
	2b Moderate and in ASI	10	8	2	1	1
	3a High	4	3	1	1	0
	3b High and in ASI	8	5	3	2	1
	4a Very High	13	11	2	0	2
	4b Very High and in ASI	29	17	12	2	10
	RNC Risk Not Calculated	0	0	0	0	0
	Unknown	0	0	0	0	0
	<b>TOTAL</b>	<b>88</b>	<b>61</b>	<b>27</b>	<b>8</b>	<b>19</b>

<sup>9</sup> ASI = Area of Special Interest as defined in the National Inspection Plan

Water Service Authority	Risk Zone	Total Submitted Inspections	Total No. Compliant Inspections	Total No. Non-Compliant Inspections	Total No. Open Advisory Notices	Total No. Closed Advisory Notices
Cork City Council	1a Low	0	0	0	0	0
	1b Low and in ASI	0	0	0	0	0
	2a Moderate	0	0	0	0	0
	2b Moderate and in ASI	0	0	0	0	0
	3a High	0	0	0	0	0
	3b High and in ASI	0	0	0	0	0
	4a Very High	0	0	0	0	0
	4b Very High and in ASI	0	0	0	0	0
	RNC Risk Not Calculated	0	0	0	0	0
	Unknown	0	0	0	0	0
	<b>TOTAL</b>	<b>0</b>	<b>0</b>	<b>0</b>	<b>0</b>	<b>0</b>
Cork County Council	1a Low	17	5	12	3	9
	1b Low and in ASI	23	10	13	1	12
	2a Moderate	7	5	2	0	2
	2b Moderate and in ASI	13	5	8	4	4
	3a High	10	5	5	1	4
	3b High and in ASI	14	5	9	0	9
	4a Very High	26	14	12	1	11
	4b Very High and in ASI	36	18	18	4	14
	RNC Risk Not Calculated	0	0	0	0	0
	Unknown	0	0	0	0	0
	<b>TOTAL</b>	<b>146</b>	<b>67</b>	<b>79</b>	<b>14</b>	<b>65</b>
Donegal County Council	1a Low	9	6	3	2	1
	1b Low and in ASI	10	8	2	0	2
	2a Moderate	6	3	3	1	2
	2b Moderate and in ASI	10	3	7	4	3
	3a High	9	7	2	1	1
	3b High and in ASI	8	6	2	0	2
	4a Very High	48	30	18	2	16
	4b Very High and in ASI	22	13	9	1	8
	RNC Risk Not Calculated	0	0	0	0	0
	Unknown	0	0	0	0	0
	<b>TOTAL</b>	<b>122</b>	<b>76</b>	<b>46</b>	<b>11</b>	<b>35</b>

Water Service Authority	Risk Zone	Total Submitted Inspections	Total No. Compliant Inspections	Total No. Non-Compliant Inspections	Total No. Open Advisory Notices	Total No. Closed Advisory Notices
Dublin City Council	1a Low	0	0	0	0	0
	1b Low and in ASI	0	0	0	0	0
	2a Moderate	0	0	0	0	0
	2b Moderate and in ASI	0	0	0	0	0
	3a High	0	0	0	0	0
	3b High and in ASI	0	0	0	0	0
	4a Very High	0	0	0	0	0
	4b Very High and in ASI	0	0	0	0	0
	RNC Risk Not Calculated	0	0	0	0	0
	Unknown	0	0	0	0	0
	<b>TOTAL</b>	<b>0</b>	<b>0</b>	<b>0</b>	<b>0</b>	<b>0</b>
Dun Laoghaire Rathdown County Council	1a Low	0	0	0	0	0
	1b Low and in ASI	0	0	0	0	0
	2a Moderate	2	0	2	2	0
	2b Moderate and in ASI	1	0	1	1	0
	3a High	0	0	0	0	0
	3b High and in ASI	0	0	0	0	0
	4a Very High	0	0	0	0	0
	4b Very High and in ASI	3	2	1	1	0
	RNC Risk Not Calculated	0	0	0	0	0
	Unknown	0	0	0	0	0
	<b>TOTAL</b>	<b>6</b>	<b>2</b>	<b>4</b>	<b>4</b>	<b>0</b>
Fingal County Council	1a Low	0	0	0	0	0
	1b Low and in ASI	0	0	0	0	0
	2a Moderate	0	0	0	0	0
	2b Moderate and in ASI	0	0	0	0	0
	3a High	0	0	0	0	0
	3b High and in ASI	0	0	0	0	0
	4a Very High	8	5	3	2	1
	4b Very High and in ASI	8	5	3	0	3
	RNC Risk Not Calculated	0	0	0	0	0
	Unknown	0	0	0	0	0
	<b>TOTAL</b>	<b>16</b>	<b>10</b>	<b>6</b>	<b>2</b>	<b>4</b>



Water Service Authority	Risk Zone	Total Submitted Inspections	Total No. Compliant Inspections	Total No. Non-Compliant Inspections	Total No. Open Advisory Notices	Total No. Closed Advisory Notices
Galway City Council	1a Low	0	0	0	0	0
	1b Low and in ASI	2	2	0	0	0
	2a Moderate	2	2	0	0	0
	2b Moderate and in ASI	0	0	0	0	0
	3a High	2	0	2	2	0
	3b High and in ASI	0	0	0	0	0
	4a Very High	5	5	0	0	0
	4b Very High and in ASI	4	2	2	2	0
	RNC Risk Not Calculated	0	0	0	0	0
	Unknown	0	0	0	0	0
	<b>TOTAL</b>	<b>15</b>	<b>11</b>	<b>4</b>	<b>4</b>	<b>0</b>
Galway County Council	1a Low	13	10	3	0	3
	1b Low and in ASI	10	6	4	0	4
	2a Moderate	16	15	1	0	1
	2b Moderate and in ASI	18	18	0	0	0
	3a High	7	7	0	0	0
	3b High and in ASI	3	2	1	0	1
	4a Very High	43	36	7	2	5
	4b Very High and in ASI	42	36	6	2	4
	RNC Risk Not Calculated	0	0	0	0	0
	Unknown	0	0	0	0	0
	<b>TOTAL</b>	<b>152</b>	<b>130</b>	<b>22</b>	<b>4</b>	<b>18</b>
Kerry County Council	1a Low	14	9	5	1	4
	1b Low and in ASI	11	2	9	3	6
	2a Moderate	8	3	5	1	4
	2b Moderate and in ASI	1	1	0	0	0
	3a High	7	3	4	0	4
	3b High and in ASI	2	1	1	1	0
	4a Very High	39	16	23	5	18
	4b Very High and in ASI	4	1	3	1	2
	RNC Risk Not Calculated	0	0	0	0	0
	Unknown	0	0	0	0	0
	<b>TOTAL</b>	<b>86</b>	<b>36</b>	<b>50</b>	<b>12</b>	<b>38</b>

Water Service Authority	Risk Zone	Total Submitted Inspections	Total No. Compliant Inspections	Total No. Non-Compliant Inspections	Total No. Open Advisory Notices	Total No. Closed Advisory Notices
<b>Kildare County Council</b>	1a Low	4	3	1	1	0
	1b Low and in ASI	2	2	0	0	0
	2a Moderate	5	3	2	2	0
	2b Moderate and in ASI	0	0	0	0	0
	3a High	5	5	0	0	0
	3b High and in ASI	0	0	0	0	0
	4a Very High	22	20	2	1	1
	4b Very High and in ASI	3	3	0	0	0
	RNC Risk Not Calculated	0	0	0	0	0
	Unknown	0	0	0	0	0
	<b>TOTAL</b>	<b>41</b>	<b>36</b>	<b>5</b>	<b>4</b>	<b>1</b>
<b>Kilkenny County Council</b>	1a Low	6	3	3	2	1
	1b Low and in ASI	2	1	1	0	1
	2a Moderate	6	4	2	2	0
	2b Moderate and in ASI	1	1	0	0	0
	3a High	6	2	4	4	0
	3b High and in ASI	1	1	0	0	0
	4a Very High	21	4	17	12	5
	4b Very High and in ASI	2	1	1	1	0
	RNC Risk Not Calculated	0	0	0	0	0
	Unknown	0	0	0	0	0
	<b>TOTAL</b>	<b>45</b>	<b>17</b>	<b>28</b>	<b>21</b>	<b>7</b>
<b>Laois County Council</b>	1a Low	2	1	1	1	0
	1b Low and in ASI	10	3	7	6	1
	2a Moderate	3	2	1	1	0
	2b Moderate and in ASI	4	2	2	2	0
	3a High	3	1	2	2	0
	3b High and in ASI	1	1	0	0	0
	4a Very High	8	2	6	6	0
	4b Very High and in ASI	8	6	2	1	1
	RNC Risk Not Calculated	0	0	0	0	0
	Unknown	0	0	0	0	0
	<b>TOTAL</b>	<b>39</b>	<b>18</b>	<b>21</b>	<b>19</b>	<b>2</b>

Water Service Authority	Risk Zone	Total Submitted Inspections	Total No. Compliant Inspections	Total No. Non-Compliant Inspections	Total No. Open Advisory Notices	Total No. Closed Advisory Notices
<b>Leitrim County Council</b>	1a Low	0	0	0	0	0
	1b Low and in ASI	0	0	0	0	0
	2a Moderate	0	0	0	0	0
	2b Moderate and in ASI	0	0	0	0	0
	3a High	0	0	0	0	0
	3b High and in ASI	0	0	0	0	0
	4a Very High	31	13	18	14	4
	4b Very High and in ASI	0	0	0	0	0
	RNC Risk Not Calculated	0	0	0	0	0
	Unknown	0	0	0	0	0
	<b>TOTAL</b>	<b>31</b>	<b>13</b>	<b>18</b>	<b>14</b>	<b>4</b>
<b>Limerick City &amp; County Council</b>	1a Low	8	2	6	4	2
	1b Low and in ASI	1	0	1	0	1
	2a Moderate	8	3	5	4	1
	2b Moderate and in ASI	2	1	1	0	1
	3a High	10	4	6	2	4
	3b High and in ASI	2	1	1	0	1
	4a Very High	43	12	31	10	21
	4b Very High and in ASI	4	2	2	0	2
	RNC Risk Not Calculated	0	0	0	0	0
	Unknown	0	0	0	0	0
	<b>TOTAL</b>	<b>78</b>	<b>25</b>	<b>53</b>	<b>20</b>	<b>33</b>
<b>Longford County Council</b>	1a Low	3	1	2	2	0
	1b Low and in ASI	0	0	0	0	0
	2a Moderate	2	2	0	0	0
	2b Moderate and in ASI	0	0	0	0	0
	3a High	2	0	2	2	0
	3b High and in ASI	0	0	0	0	0
	4a Very High	18	13	5	1	4
	4b Very High and in ASI	0	0	0	0	0
	RNC Risk Not Calculated	0	0	0	0	0
	Unknown	0	0	0	0	0
	<b>TOTAL</b>	<b>25</b>	<b>16</b>	<b>9</b>	<b>5</b>	<b>4</b>

Water Service Authority	Risk Zone	Total Submitted Inspections	Total No. Compliant Inspections	Total No. Non-Compliant Inspections	Total No. Open Advisory Notices	Total No. Closed Advisory Notices
<b>Louth County Council</b>	1a Low	1	0	1	0	1
	1b Low and in ASI	0	0	0	0	0
	2a Moderate	1	1	0	0	0
	2b Moderate and in ASI	1	0	1	0	1
	3a High	1	1	0	0	0
	3b High and in ASI	0	0	0	0	0
	4a Very High	18	8	10	0	10
	4b Very High and in ASI	6	2	4	0	4
	RNC Risk Not Calculated	0	0	0	0	0
	Unknown	0	0	0	0	0
	<b>TOTAL</b>	<b>28</b>	<b>12</b>	<b>16</b>	<b>0</b>	<b>16</b>
<b>Mayo County Council</b>	1a Low	19	6	13	6	7
	1b Low and in ASI	9	4	5	1	4
	2a Moderate	7	5	2	0	2
	2b Moderate and in ASI	3	0	3	2	1
	3a High	8	2	6	2	4
	3b High and in ASI	3	2	1	1	0
	4a Very High	16	6	10	3	7
	4b Very High and in ASI	5	3	2	1	1
	RNC Risk Not Calculated	0	0	0	0	0
	Unknown	1	0	1	0	1
	<b>TOTAL</b>	<b>71</b>	<b>28</b>	<b>43</b>	<b>16</b>	<b>27</b>
<b>Meath County Council</b>	1a Low	9	3	6	0	6
	1b Low and in ASI	0	0	0	0	0
	2a Moderate	5	3	2	1	1
	2b Moderate and in ASI	0	0	0	0	0
	3a High	5	2	3	0	3
	3b High and in ASI	0	0	0	0	0
	4a Very High	40	18	22	5	17
	4b Very High and in ASI	2	0	2	1	1
	RNC Risk Not Calculated	0	0	0	0	0
	Unknown	0	0	0	0	0
	<b>TOTAL</b>	<b>61</b>	<b>26</b>	<b>35</b>	<b>7</b>	<b>28</b>

Water Service Authority	Risk Zone	Total Submitted Inspections	Total No. Compliant Inspections	Total No. Non-Compliant Inspections	Total No. Open Advisory Notices	Total No. Closed Advisory Notices
<b>Monaghan County Council</b>	1a Low	2	0	2	0	2
	1b Low and in ASI	0	0	0	0	0
	2a Moderate	2	0	2	0	2
	2b Moderate and in ASI	2	1	1	0	1
	3a High	5	5	0	0	0
	3b High and in ASI	1	1	0	0	0
	4a Very High	35	20	15	5	10
	4b Very High and in ASI	4	4	0	0	0
	RNC Risk Not Calculated	0	0	0	0	0
	Unknown	0	0	0	0	0
	<b>TOTAL</b>	<b>51</b>	<b>31</b>	<b>20</b>	<b>5</b>	<b>15</b>
<b>Offaly County Council</b>	1a Low	9	4	5	0	5
	1b Low and in ASI	1	1	0	0	0
	2a Moderate	4	1	3	1	2
	2b Moderate and in ASI	0	0	0	0	0
	3a High	3	2	1	0	1
	3b High and in ASI	0	0	0	0	0
	4a Very High	9	6	3	1	2
	4b Very High and in ASI	0	0	0	0	0
	RNC Risk Not Calculated	0	0	0	0	0
	Unknown	0	0	0	0	0
	<b>TOTAL</b>	<b>26</b>	<b>14</b>	<b>12</b>	<b>2</b>	<b>10</b>
<b>Roscommon County Council</b>	1a Low	7	2	5	1	4
	1b Low and in ASI	3	0	3	2	1
	2a Moderate	5	3	2	0	2
	2b Moderate and in ASI	1	1	0	0	0
	3a High	7	2	5	5	0
	3b High and in ASI	1	0	1	0	1
	4a Very High	21	7	14	8	6
	4b Very High and in ASI	5	3	2	1	1
	RNC Risk Not Calculated	0	0	0	0	0
	Unknown	0	0	0	0	0
	<b>TOTAL</b>	<b>50</b>	<b>18</b>	<b>32</b>	<b>17</b>	<b>15</b>

Water Service Authority	Risk Zone	Total Submitted Inspections	Total No. Compliant Inspections	Total No. Non-Compliant Inspections	Total No. Open Advisory Notices	Total No. Closed Advisory Notices
Sligo County Council	1a Low	2	0	2	2	0
	1b Low and in ASI	9	3	6	1	5
	2a Moderate	0	0	0	0	0
	2b Moderate and in ASI	5	2	3	2	1
	3a High	0	0	0	0	0
	3b High and in ASI	0	0	0	0	0
	4a Very High	11	4	7	1	6
	4b Very High and in ASI	11	5	6	1	5
	RNC Risk Not Calculated	0	0	0	0	0
	Unknown	0	0	0	0	0
	<b>TOTAL</b>	<b>38</b>	<b>14</b>	<b>24</b>	<b>7</b>	<b>17</b>
South Dublin County Council	1a Low	0	0	0	0	0
	1b Low and in ASI	0	0	0	0	0
	2a Moderate	0	0	0	0	0
	2b Moderate and in ASI	0	0	0	0	0
	3a High	2	1	1	1	0
	3b High and in ASI	0	0	0	0	0
	4a Very High	12	4	8	7	1
	4b Very High and in ASI	0	0	0	0	0
	RNC Risk Not Calculated	0	0	0	0	0
	Unknown	0	0	0	0	0
	<b>TOTAL</b>	<b>14</b>	<b>5</b>	<b>9</b>	<b>8</b>	<b>1</b>
Tipperary County Council	1a Low	15	6	9	5	4
	1b Low and in ASI	2	1	1	1	0
	2a Moderate	5	2	3	2	1
	2b Moderate and in ASI	2	1	1	0	1
	3a High	7	5	2	2	0
	3b High and in ASI	4	2	2	0	2
	4a Very High	18	12	6	2	4
	4b Very High and in ASI	1	0	1	0	1
	RNC Risk Not Calculated	0	0	0	0	0
	Unknown	1	0	1	1	0
	<b>TOTAL</b>	<b>55</b>	<b>29</b>	<b>26</b>	<b>13</b>	<b>13</b>

Water Service Authority	Risk Zone	Total Submitted Inspections	Total No. Compliant Inspections	Total No. Non-Compliant Inspections	Total No. Open Advisory Notices	Total No. Closed Advisory Notices
<b>Waterford City &amp; County Council</b>	1a Low	5	5	0	0	0
	1b Low and in ASI	4	3	1	1	0
	2a Moderate	3	1	2	1	1
	2b Moderate and in ASI	0	0	0	0	0
	3a High	0	0	0	0	0
	3b High and in ASI	0	0	0	0	0
	4a Very High	5	5	0	0	0
	4b Very High and in ASI	0	0	0	0	0
	RNC Risk Not Calculated	0	0	0	0	0
	Unknown	1	0	1	1	0
	<b>TOTAL</b>	<b>18</b>	<b>14</b>	<b>4</b>	<b>3</b>	<b>1</b>
<b>Westmeath County Council</b>	1a Low	14	11	3	1	2
	1b Low and in ASI	0	0	0	0	0
	2a Moderate	5	5	0	0	0
	2b Moderate and in ASI	0	0	0	0	0
	3a High	1	1	0	0	0
	3b High and in ASI	0	0	0	0	0
	4a Very High	9	7	2	0	2
	4b Very High and in ASI	0	0	0	0	0
	RNC Risk Not Calculated	0	0	0	0	0
	Unknown	0	0	0	0	0
	<b>TOTAL</b>	<b>29</b>	<b>24</b>	<b>5</b>	<b>1</b>	<b>4</b>
<b>Wexford County Council</b>	1a Low	13	6	7	1	6
	1b Low and in ASI	2	2	0	0	0
	2a Moderate	3	2	1	0	1
	2b Moderate and in ASI	2	0	2	1	1
	3a High	4	2	2	0	2
	3b High and in ASI	3	1	2	0	2
	4a Very High	56	25	31	4	27
	4b Very High and in ASI	15	4	11	3	8
	RNC Risk Not Calculated	0	0	0	0	0
	Unknown	0	0	0	0	0
	<b>TOTAL</b>	<b>98</b>	<b>42</b>	<b>56</b>	<b>9</b>	<b>47</b>

Water Service Authority	Risk Zone	Total Submitted Inspections	Total No. Compliant Inspections	Total No. Non-Compliant Inspections	Total No. Open Advisory Notices	Total No. Closed Advisory Notices
<b>Wicklow County Council</b>	1a Low	4	2	2	1	1
	1b Low and in ASI	6	3	3	0	3
	2a Moderate	3	1	2	0	2
	2b Moderate and in ASI	1	0	1	0	1
	3a High	3	1	2	0	2
	3b High and in ASI	2	1	1	0	1
	4a Very High	8	3	5	3	2
	4b Very High and in ASI	4	2	2	1	1
	RNC Risk Not Calculated	0	0	0	0	0
	Unknown	0	0	0	0	0
	<b>TOTAL</b>	<b>31</b>	<b>13</b>	<b>18</b>	<b>5</b>	<b>13</b>
<b>TOTAL</b>		<b>1559</b>	<b>842</b>	<b>717</b>	<b>240</b>	<b>477</b>



**Table A.2:** Advisory Notices and reasons for non-compliance as a result of inspections carried out from the 1<sup>st</sup> July 2013 to the 31<sup>st</sup> December 2014, by local authority

Water Service Authority	Total No. of Inspections	Total No. of Advisory Notices	Leakage from the system Section 2(1)a	Unlicensed discharge to SW/Inadequate thickness of subsoil Section 2(1)b	Surface Ponding Section 2(1)c	Roof water or SW entering the system Section 2(2)	Operation and Maintenance Section 2(3)	Desludging Section 3(1)	Risk to human health or the environment Section 70C(1)(b)
Carlow County Council	20	7	0	0	0	1	4	2	0
Cavan County Council	79	38	2	7	3	5	9	34	10
Clare County Council	88	27	10	8	8	7	13	15	15
Cork City Council	0	0	0	0	0	0	0	0	0
Cork County Council	146	79	19	27	16	14	29	56	35
Donegal County Council	122	46	16	27	17	8	25	10	35
Dublin City Council	0	0	0	0	0	0	0	0	0
Dun Laoghaire Rathdown County Council	6	4	0	0	2	0	0	4	0
Fingal County Council	16	6	0	1	1	0	3	4	2
Galway City Council	15	4	1	2	0	1	3	3	3
Galway County Council	152	22	20	17	17	5	21	12	22
Kerry County Council	86	50	9	16	10	19	15	19	21
Kildare County Council	41	5	2	2	0	1	4	3	2
Kilkenny County Council	45	28	4	2	3	6	12	16	4
Laois County Council	39	21	5	6	4	2	7	14	8
Leitrim County Council	31	18	3	13	4	5	9	4	14
Limerick City & County Council	78	53	12	19	7	21	29	26	28
Longford County Council	25	9	3	4	1	4	5	7	5
Louth County Council	28	16	1	1	0	7	2	12	12
Mayo County Council	71	43	12	9	12	3	33	31	33
Meath County Council	61	35	4	19	8	7	16	5	26
Monaghan County Council	51	20	7	5	7	8	12	2	11
Offaly County Council	26	12	2	3	2	3	6	6	6
Roscommon County Council	50	32	22	19	11	9	28	12	26

<b>Sligo County Council</b>	38	24	8	8	9	7	14	16	19
<b>South Dublin County Council</b>	14	9	0	3	0	2	5	7	4
<b>Tipperary County Council</b>	55	26	4	9	7	8	12	16	15
<b>Waterford City &amp; County Council</b>	18	4	2	2	1	1	2	2	1
<b>Westmeath County Council</b>	29	5	2	2	3	2	2	0	4
<b>Wexford County Council</b>	98	56	13	15	7	14	28	40	18
<b>Wicklow County Council</b>	31	18	3	6	4	8	5	7	13
<b>Total</b>	<b>1559</b>	<b>717</b>	<b>186</b>	<b>252</b>	<b>164</b>	<b>178</b>	<b>353</b>	<b>385</b>	<b>392</b>

**Table A.3:** Non-compliance by reason according to age and type of treatment system, nationally

	Total # of Inspections	Total # of Advisory Notices	Leakage from the system Section 2(1)a	Unlicensed discharge to SW/Inadequate subsoil thickness Section 2(1)b	Surface Ponding Section 2(1)c	Roof water or SW entering the system Section 2(2)	Operation and Maintenance Section 2(3)	Desludging Section 3(1)	Risk to human health or the environment Section 70C(1)(b)
<b>Septic tanks pre 1964</b>	90	57	21	36	17	23	26	27	44
<b>Septic Tank 1964 - 1979</b>	297	159	51	67	37	46	82	76	91
<b>Septic Tank 1980 - 2000</b>	604	272	72	92	63	69	129	157	150
<b>Septic tanks post 2000</b>	275	115	28	29	31	25	54	64	57
<b>Secondary 1980 - 2000</b>	36	17	1	5	3	4	7	9	8
<b>Secondary post 2000</b>	231	81	11	20	10	9	47	39	35
<b>Tertiary 1980 - 2000</b>	3	2	0	0	0	0	2	1	0
<b>Tertiary post 2000</b>	11	4	0	0	0	0	1	4	1
<b>None</b>	8	7	2	2	2	2	4	6	5
<b>N/A</b>	4	3	0	1	1	0	1	2	1
<b>Total</b>	<b>1559</b>	<b>717</b>	<b>186</b>	<b>252</b>	<b>164</b>	<b>178</b>	<b>353</b>	<b>385</b>	<b>392</b>

**Table A.4:** Non-compliance by reason according to water supply, nationally

	Total # of Inspections	Total # of Advisory Notice	Leakage from the system Section 2(1)a	Unlicensed discharge to SW/Inadequate subsoil Section 2(1)b	Surface Ponding Section 2(1)c	Roof water or SW entering the system Section 2(2)	Operation and Maintenance Section 2(3)	Desludging Section 3(1)	Risk to human health or the environment Section 70C(1)(b)
<b>Group Water Scheme</b>	285	124	32	42	29	32	65	60	72
<b>Mains</b>	838	367	110	142	95	104	188	194	218
<b>Private Well</b>	407	209	38	59	34	39	91	122	90
<b>Spring</b>	17	12	4	7	4	3	5	5	8
<b>Surface Water</b>	12	5	2	2	2	0	4	4	4
<b>Total</b>	<b>1559</b>	<b>717</b>	<b>186</b>	<b>252</b>	<b>164</b>	<b>178</b>	<b>353</b>	<b>385</b>	<b>392</b>

**Table A.5:** Status of Advisory Notices issued from the 1<sup>st</sup> July 2013 to the 31<sup>st</sup> December 2014, by county (as of the 28<sup>th</sup> July 2015)

	Total No. Advisory Notices Submitted	Total No. Open Advisory Notices	Total No. Closed Advisory Notices	Total No. Open-Reinspection Advisory Notices	Total No. Extension Decision Granted	Total No. Extension Decision Refused	Total No. Confirmed Advisory Notices	Total No. Cancelled Advisory Notices	Total No. Open-Prosecution Pending	Total No. Open-Court Appeals
<b>Carlow</b>	7	1	6	0	0	0	0	0	0	0
<b>Cavan</b>	38	4	34	0	0	0	0	0	0	0
<b>Clare</b>	27	8	19	0	0	0	0	0	0	0
<b>Cork</b>	79	14	65	0	7	0	1	0	0	0
<b>Donegal</b>	46	11	35	0	6	0	0	0	0	0
<b>Dublin</b>	19	14	5	0	0	0	0	0	0	0
<b>Galway</b>	26	8	18	0	3	0	0	0	0	0
<b>Kerry</b>	50	12	38	0	14	0	0	0	0	0
<b>Kildare</b>	5	4	1	0	0	0	0	0	0	0
<b>Kilkenny</b>	28	21	7	0	0	0	0	0	0	0
<b>Laois</b>	21	19	2	0	0	0	0	1	0	0
<b>Leitrim</b>	18	14	4	0	0	0	0	0	0	0
<b>Limerick</b>	53	20	33	0	4	0	1	0	0	0
<b>Longford</b>	9	5	4	0	0	0	0	0	0	0
<b>Louth</b>	16	0	16	0	0	0	0	0	0	0
<b>Mayo</b>	43	16	27	0	10	0	0	0	0	0
<b>Meath</b>	35	7	28	0	1	0	0	0	0	0
<b>Monaghan</b>	20	5	15	0	1	0	0	0	0	0
<b>Offaly</b>	12	2	10	0	0	0	0	0	0	0
<b>Roscommon</b>	32	17	15	0	9	0	1	0	0	0
<b>Sligo</b>	24	7	17	0	4	0	0	0	0	0
<b>Tipperary</b>	26	13	13	1	5	0	0	0	1	0
<b>Waterford</b>	4	3	1	0	0	0	0	0	0	0
<b>Westmeath</b>	5	1	4	0	0	0	0	0	0	0
<b>Wexford</b>	56	9	47	0	10	0	0	0	0	0
<b>Wicklow</b>	18	5	13	1	1	0	1	0	0	0
<b>Total</b>	<b>717</b>	<b>240</b>	<b>477</b>	<b>2</b>	<b>75</b>	<b>0</b>	<b>4</b>	<b>1</b>	<b>1</b>	<b>0</b>

**Table A.6:** Status of Measures with Associated Advisory Notices, where remedial date has passed (as of the 28<sup>th</sup> July 2015) and no time extension requested

Measures	Open Measures	Closed Measures	Total
Cease any nuisance arising from odours or noise	1	8	9
Cease any uncontaminated water from entering the system	39	108	147
Cease the unintended discharge to the surface of the ground	21	46	67
Cease the unintended leak or discharge from the system components	24	34	58
Cease the unlicensed discharge	17	34	51
Cease the untreated discharge	27	59	86
De-sludge the tank using an authorised contractor and dispose of contents in accordance with all relevant national legislation	80	228	308
Fix or replace the relevant component parts of the system such that they are fit for purpose	62	125	187
Operate and maintain the system so that it does not pose a risk to human health or the environment	18	40	58
Provide evidence of the existence of a properly functioning DWWTS that complies with the requirements of the legislation	15	23	38
General	5	20	25

## AN GHNÍOMHAIREACHT UM CHAOMHNÚ COMHSHAOIL

Tá an Gníomhaireacht um Chaomhnú Comhshaoil (GCC) freagrach as an gcomhshaoil a chaomhnú agus a fheabhsú mar shócmhainn luachmhar do mhuintir na hÉireann. Táimid tiomanta do dhaoine agus don chomhshaoil a chosaint ó éifeachtaí díobhálacha na radaíochta agus an truaillithe.

### Is féidir obair na Gníomhaireachta a roinnt ina trí phríomhréimse:

**Rialú:** *Déanaimid córais éifeachtacha rialaithe agus comhlíonta comhshaoil a chur i bhfeidhm chun torthaí maithe comhshaoil a sholáthar agus chun díriú orthu siúd nach gclóíonn leis na córais sin.*

**Eolas:** *Soláthraimid sonraí, faisnéis agus measúnú comhshaoil atá ar ardchaighdeán, spriocdhírthe agus tráthúil chun bonn eolais a chur faoin gcinnteoireacht ar gach leibhéal.*

**Tacaíocht:** *Bimid ag saothrú i gcomhar le grúpaí eile chun tacú le comhshaoil atá glan, táirgiúil agus cosanta go maith, agus le hiompar a chuirfidh le comhshaoil inbhuanaithe.*

### Ár bhFreagrachtaí

#### Ceadúnú

- Déanaimid na gníomhaíochtaí seo a leanas a rialú ionas nach ndéanann siad dochar do shláinte an phobail ná don chomhshaoil:
- saoráidí dramhaíola (m.sh. láithreáin líonta talún, loisceoirí, stáisiúin aistrithe dramhaíola);
- gníomhaíochtaí tionsclaíocha ar scála mór (m.sh. déantúsaíocht cógaisíochta, déantúsaíocht stroighne, stáisiúin chumhachta);
- an diantalmhaíocht (m.sh. muca, éanlaith);
- úsáid shrianta agus scaoileadh rialaithe Orgánach Géinmhodhnaithe (OGM);
- foinsí radaíochta ianúcháin (m.sh. trealamh x-gha agus radaiteiripe, foinsí tionsclaíocha);
- áiseanna móra stórála peitрил;
- scardadh dramhuisce;
- gníomhaíochtaí dumpála ar farraige.

#### Forfheidhmiú Náisiúnta i leith Cúrsaí Comhshaoil

- Clár náisiúnta iniúchtaí agus cigireachtaí a dhéanamh gach bliain ar shaoráidí a bhfuil ceadúnas ón nGníomhaireacht acu.
- Maoirseacht a dhéanamh ar fhreagrachtaí cosanta comhshaoil na n-údarás áitiúil.
- Caighdeán an uisce óil, arna sholáthar ag soláthraithe uisce phoiblí, a mhaoirsiú.
- Obair le húdaráis áitiúla agus le gníomhaireachtaí eile chun dul i ngleic le coireanna comhshaoil trí chomhordú a dhéanamh ar líonra forfheidhmiúcháin náisiúnta, trí dhíriú ar chiontóirí, agus trí mhaoirsiú a dhéanamh ar leasúchán.
- Cur i bhfeidhm rialachán ar nós na Rialachán um Dhramhthrealamh Leictreach agus Leictreonach (DTLL), um Shrian ar Shubstaintí Guaiseacha agus na Rialachán um rialú ar shubstaintí a ídíonn an ciseal ózóin.
- An dlí a chur orthu siúd a bhriseann dlí an chomhshaoil agus a dhéanann dochar don chomhshaoil.

#### Bainistíocht Uisce

- Monatóireacht agus tuairisciú a dhéanamh ar cháilíocht aibhneacha, lochanna, uiscí idirchriosacha agus cósta na hÉireann, agus screamhuisc; leibhéil uisce agus sruthanna aibhneacha a thomhas.
- Comhordú náisiúnta agus maoirsiú a dhéanamh ar an gCreat-Treoir Uisce.
- Monatóireacht agus tuairisciú a dhéanamh ar Cháilíocht an Uisce Snámha.

### Monatóireacht, Anailís agus Tuairisciú ar an gComhshaoil

- Monatóireacht a dhéanamh ar cháilíocht an aeir agus Treoir an AE maidir le hAer Glan don Eoraip (CAFÉ) a chur chun feidhme.
- Tuairisciú neamhspleách le cabhrú le cinnteoireacht an rialtais náisiúnta agus na n-údarás áitiúil (m.sh. tuairisciú tréimhsiúil ar staid Chomhshaoil na hÉireann agus Tuarascálacha ar Tháscairí).

#### Rialú Astaíochtaí na nGás Ceaptha Teasa in Éirinn

- Fardail agus réamh-mheastacháin na hÉireann maidir le gáis cheaptha teasa a ullmhú.
- An Treoir maidir le Trádáil Astaíochtaí a chur chun feidhme i gcomhair breis agus 100 de na táirgeoirí dé-ocsaíde carbóin is mó in Éirinn

#### Taighde agus Forbairt Comhshaoil

- Taighde comhshaoil a chistiú chun brúnna a shainaitheint, bonn eolais a chur faoi bheartais, agus réitigh a sholáthar i réimsí na haeraíde, an uisce agus na hinbhuanaitheachta.

#### Measúnacht Straitéiseach Timpeallachta

- Measúnacht a dhéanamh ar thionchar pleananna agus clár beartaithe ar an gcomhshaoil in Éirinn (m.sh. mórfhleananna forbartha).

#### Cosaint Raideolaíoch

- Monatóireacht a dhéanamh ar leibhéil radaíochta, measúnacht a dhéanamh ar nochtadh mhuintir na hÉireann don radaíocht ianúcháin.
- Cabhrú le pleananna náisiúnta a fhorbairt le haghaidh éigeandálaí ag eascairt as taismí núicléacha.
- Monatóireacht a dhéanamh ar fhorbairtí thar lear a bhaineann le saoráidí núicléacha agus leis an tsábháilteacht raideolaíochta.
- Sainseirbhísí cosanta ar an radaíocht a sholáthar, nó maoirsiú a dhéanamh ar sholáthar na seirbhísí sin.

#### Treoir, Faisnéis Inrochtana agus Oideachas

- Comhairle agus treoir a chur ar fáil d'earnáil na tionsclaíochta agus don phobal maidir le hábhair a bhaineann le caomhnú an chomhshaoil agus leis an gcosaint raideolaíoch.
- Faisnéis thráthúil ar an gcomhshaoil ar a bhfuil fáil éasca a chur ar fáil chun rannpháirtíocht an phobail a spreagadh sa chinnteoireacht i ndáil leis an gcomhshaoil (m.sh. Timpeall an Tí, léarscáileanna radóin).
- Comhairle a chur ar fáil don Rialtas maidir le hábhair a bhaineann leis an tsábháilteacht raideolaíoch agus le cúrsaí práinnfhreagartha.
- Plean Náisiúnta Bainistíochta Dramhaíola Guaisí a fhorbairt chun dramhaíl ghuaiseach a chosc agus a bhainistiú.

#### Múscailt Feasachta agus Athrú Iompraíochta

- Feasacht chomhshaoil níos fearr a ghiniúint agus dul i bhfeidhm ar athrú iompraíochta dearfach trí thacú le gnóthais, le pobail agus le teaghlaigh a bheith níos éifeachtúla ar acmhainní.
- Tástáil le haghaidh radóin a chur chun cinn i dtithe agus in ionaid oibre, agus gníomhartha leasúcháin a spreagadh nuair is gá.

#### Bainistíocht agus struchtúr na Gníomhaireachta um Chaomhnú Comhshaoil

Tá an ghníomhaíocht á bainistiú ag Bord lánaimseartha, ar a bhfuil Ard-Stiúrthóir agus cúigear Stiúrthóirí. Déantar an obair ar fud cúig cinn d'Oifigí:

- An Oifig Aeráide, Ceadúnaithe agus Úsáide Acmhainní
- An Oifig Forfheidhmithe i leith cúrsaí Comhshaoil
- An Oifig um Measúnú Comhshaoil
- An Oifig um Cosaint Raideolaíoch
- An Oifig Cumarsáide agus Seirbhísí Corparáideacha

Tá Coiste Comhairleach ag an nGníomhaireacht le cabhrú léi. Tá dáréag comhaltaí air agus tagann siad le chéile go rialta le plé a dhéanamh ar ábhair imní agus le comhairle a chur ar an mBord.

**Headquarters, PO Box 3000**

**Johnstown Castle Estate  
County Wexford, Ireland**

Ceanncheathrú, Bosca Poist 3000  
Eastát Chaisleán Bhaile Sheáin  
Contae Loch Garman, Éire

T:+353 53 916 0600

F:+353 53 916 0699

**Regional Inspectorate**

**McCumiskey House, Richview  
Clonskeagh Road, Dublin 14, Ireland**

Cigireacht Réigiúnach, Teach Mhic Chumascaigh  
Dea-Radharc, Bóthar Cluain Sceach  
Baile Átha Cliath 14, Éire

T:+353 1 268 0100

F:+353 1 268 0199

**Regional Inspectorate**

**Inniscarra, County Cork, Ireland**

Cigireacht Réigiúnach, Inis Cara  
Contae Chorcaí, Éire

T:+353 21 487 5540

F:+353 21 487 5545

**Regional Inspectorate**

**John Moore Road, Castlebar  
County Mayo, Ireland**

Cigireacht Réigiúnach, Bóthar Sheán de Mórdha  
Caisleán an Bharraigh, Contae Mhaigh Eo, Éire

T:+353 94 904 8400

F:+353 94 902 1934

**Regional Inspectorate**

**Seville Lodge, Callan Road,  
Kilkenny, Ireland**

Cigireacht Réigiúnach, Lóiste Sevilla,  
Bóthar Challainn, Cill Chainnigh, Éire

T:+353 56 779 6700

F:+353 56 779 6798

**Regional Inspectorate**

**The Glen, Monaghan, Ireland**

Cigireacht Réigiúnach, An Gleann  
Muineachán, Éire

T:+353 47 77600

F:+353 47 84987

E: [info@epa.ie](mailto:info@epa.ie)

W: [www.epa.ie](http://www.epa.ie)

Lo Call: 1890 33 55 99

